

SHIMANO PD-M324

Shimano PD-M324 Mixed SPD Bicycle Pedals Instruction Manual

Model: PD-M324

1. INTRODUCTION

Thank you for choosing Shimano PD-M324 Mixed SPD Bicycle Pedals. These pedals are designed for versatility, offering a clipless SPD mechanism on one side and a traditional flat platform on the other. This allows riders to use SPD-compatible cycling shoes for efficient power transfer or regular shoes for casual riding. This manual provides essential information for proper installation, operation, and maintenance to ensure safe and optimal performance.

2. SAFETY INFORMATION

Always prioritize safety when installing and using bicycle components. Improper installation or use can lead to serious injury. Please read and understand all instructions before proceeding.

- **Consult the Official Safety Document:** For detailed safety guidelines, please refer to the official safety information PDF provided by Shimano. [Download Safety Information \(PDF\)](#)
- **Professional Installation Recommended:** If you are unsure about any installation steps, it is highly recommended to have the pedals installed by a qualified bicycle mechanic.
- **Regular Inspection:** Periodically check pedals and cleats for wear, damage, or loose components. Replace worn parts immediately.
- **Cleat Tension Adjustment:** Always adjust cleat tension to a comfortable level that allows for easy disengagement, especially for new users. Practice clipping in and out in a safe, controlled environment before riding.

3. SETUP AND INSTALLATION

Proper installation is crucial for the performance and safety of your pedals.

3.1. Pedal Installation on Bicycle

1. **Identify Left and Right Pedals:** The pedals are marked 'L' for left and 'R' for right. The right pedal has a standard thread, and the left pedal has a reverse thread.
2. **Apply Grease:** Apply a thin layer of bicycle grease to the pedal threads. This prevents seizing and makes future removal easier.
3. **Install Right Pedal:** Thread the right pedal (R) clockwise into the right crank arm. Tighten securely with a 15mm pedal wrench.
4. **Install Left Pedal:** Thread the left pedal (L) counter-clockwise into the left crank arm. Tighten securely with a 15mm pedal wrench.
5. **Torque Specification:** Ensure pedals are tightened to the manufacturer's recommended torque specification (typically 35-55 Nm).



Image 1: Shimano PD-M324 pedal, illustrating the SPD cleatless mechanism for use with compatible cycling shoes.

3.2. Cleat Installation on Cycling Shoes

The Shimano PD-M324 pedals typically come with SM-SH56 multi-release cleats. These cleats allow disengagement by twisting the heel in multiple directions.

1. **Locate Cleat Mounting Area:** On the sole of your SPD-compatible cycling shoes, locate the two-bolt mounting area.
2. **Position Cleats:** Place the cleat and its washer onto the shoe. Adjust the cleat position for comfort and efficiency. A common starting point is to align the center of the cleat with the ball of your foot.
3. **Secure Cleats:** Insert the cleat bolts and tighten them evenly. Do not overtighten.
4. **Fine-tune Position:** After initial rides, you may need to adjust the cleat position slightly to optimize comfort and power transfer.

3.3. Cleat Tension Adjustment

The SPD mechanism features an adjustable spring tension to control how easily your foot releases from the pedal. This is crucial for safety and personal preference.

1. **Locate Adjustment Screw:** On the SPD side of the pedal, locate the small hex screw.
2. **Adjust Tension:** Use a hex wrench to turn the screw. Turning clockwise increases tension (harder to release), and counter-clockwise decreases tension (easier to release).
3. **Match Both Pedals:** Ensure the tension is set equally on both pedals for consistent release.
4. **Test Release:** Before riding, practice clipping in and out with your shoes to ensure the tension is appropriate for your skill level and riding style. Start with a lower tension setting if you are new to clipless pedals.

4. OPERATING INSTRUCTIONS

The PD-M324 pedals offer dual functionality for different riding needs.

4.1. Using the SPD Clipless Side

1. **Engaging:** With your SPD-compatible shoe, align the cleat with the pedal mechanism. Push down firmly with your heel slightly angled, then push your heel down to click into place. A distinct 'click' sound indicates engagement.
2. **Disengaging:** To release your foot, twist your heel outwards (away from the bicycle) or inwards (towards the bicycle) with a firm motion. The SM-SH56 cleats allow for multi-directional release.
3. **Practice:** It is essential to practice clipping in and out multiple times in a safe, stationary environment before riding on roads or trails. This builds muscle memory for quick release.

4.2. Using the Flat Platform Side

The opposite side of the pedal features a flat platform with a cage, suitable for use with regular street shoes.

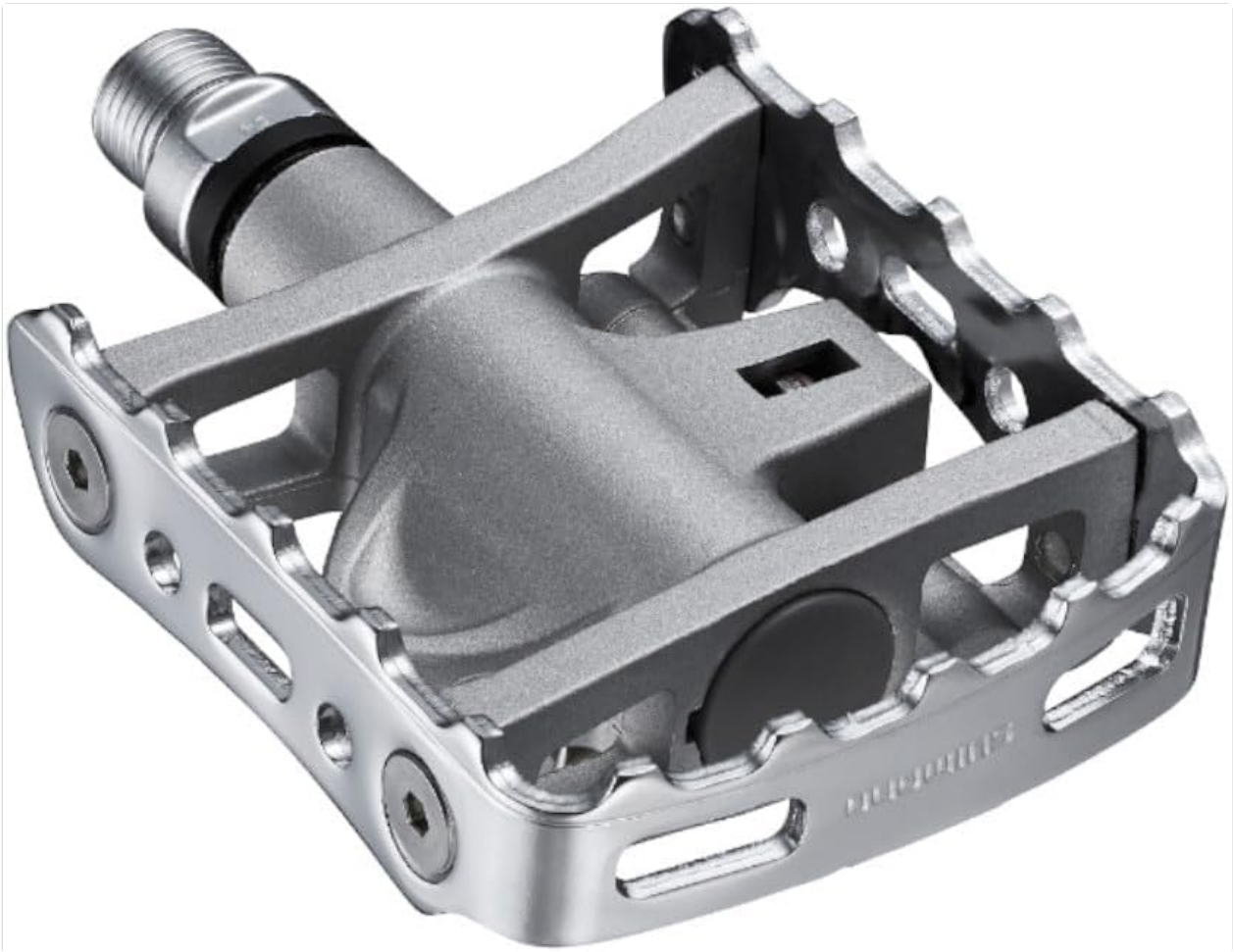


Image 2: Shimano PD-M324 pedal, illustrating the flat platform side for use with standard footwear.

- **Foot Placement:** Place your foot centrally on the platform side. The serrated edges of the cage provide grip for your shoes.
- **Versatility:** This side is ideal for short commutes, casual rides, or situations where you prefer not to wear cycling shoes.
- **Grip:** While the platform offers good grip for casual use, it may not provide the same level of secure connection as the SPD side for aggressive riding.

5. MAINTENANCE

Regular maintenance extends the life of your pedals and ensures consistent performance.

- **Cleaning:** Keep pedals clean from dirt, mud, and debris. Use a brush and mild soap and water, then rinse thoroughly. Avoid high-pressure washing directly on the pedal bearings.
- **Lubrication:** Periodically apply a small amount of light oil or grease to the SPD mechanism's moving parts to ensure smooth engagement and release. Do not over-lubricate.
- **Bearing Inspection:** Check for any play or roughness in the pedal bearings. If detected, professional servicing or replacement may be required.
- **Cleat Wear:** Inspect your cleats regularly for wear. Worn cleats can make clipping in and out difficult or lead to accidental release. Replace cleats when they show significant wear.
- **Bolt Tightness:** Periodically check that the pedal bolts and cleat bolts are securely tightened.

6. TROUBLESHOOTING

Here are some common issues and their potential solutions:

- **Difficulty Clipping In/Out:**
 - **Solution:** Adjust cleat tension (loosen for easier release). Check cleats for excessive wear or obstruction. Ensure cleats are clean.
- **Accidental Release:**
 - **Solution:** Increase cleat tension. Inspect cleats and pedal mechanism for wear or damage.
- **Squeaking or Clicking Noise:**
 - **Solution:** Check cleat bolts for tightness. Lubricate the cleat-pedal interface. Inspect pedal bearings for issues. Ensure pedal threads are greased and tightened correctly.
- **Pedal Feels Loose or Has Play:**
 - **Solution:** Check pedal spindle for tightness in the crank arm. If play is within the pedal body, the bearings may need servicing or replacement. Consult a professional mechanic.

7. SPECIFICATIONS

Feature	Specification
Model Number	PD-M324 (EPDM324)
Brand	SHIMANO
Pedal Type	Mixed SPD (Clipless and Platform)
Sport Type	MTB (Mountain Bike)
Material	Chromoly Steel (Acero al cromo molibdeno)
Dimensions (L x W x H)	10 x 7 x 4 cm
Weight	Approximately 500 g (per pair)
Included Items	1 set of mixed pedals, SM-SH56 multi-release cleats
GTIN	689228072466

8. WARRANTY INFORMATION

The Shimano PD-M324 pedals come with a **2-year product warranty** from the date of purchase. This warranty covers manufacturing defects in materials and workmanship under normal use. It does not cover damage resulting from improper installation, accident, abuse, neglect, normal wear and tear, or modifications. Please retain your proof of purchase for any warranty claims.

9. SUPPORT

For further assistance, technical support, or to inquire about replacement parts, please contact Shimano customer service or visit the official Shimano website. You may also consult your local authorized Shimano dealer for professional advice and service.

- **Shimano Official Website:** bike.shimano.com
- **Local Dealer Locator:** Refer to the Shimano website to find an authorized dealer near you.

© 2023 Shimano Corporation. All rights reserved.