

[Manuals.plus](#) /

> [Olivia Garden](#) /

> Olivia Garden Ceramic + Ion Round Thermal Hair Brush - CI-45 (1 3/4") Instruction Manual

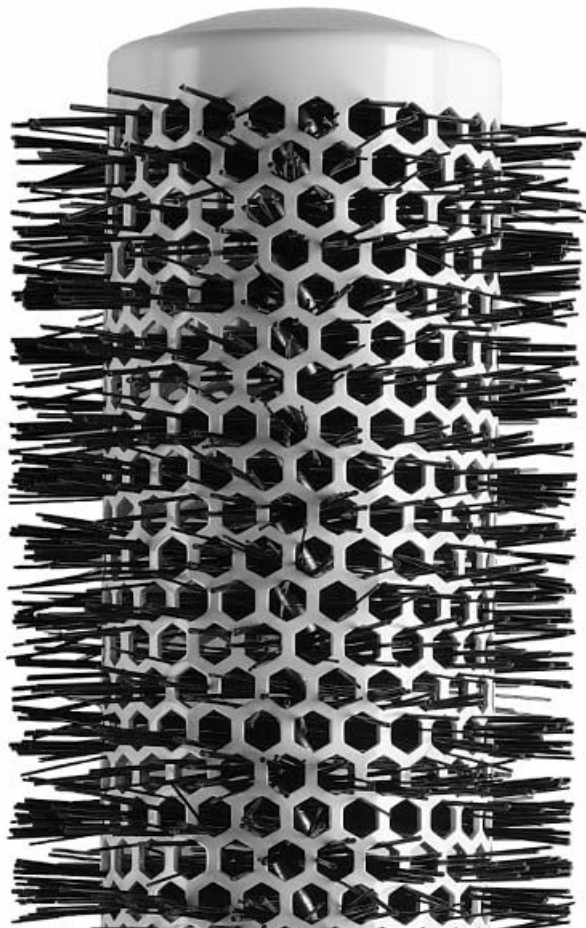
## Olivia Garden 1312-01412

# Olivia Garden Ceramic + Ion Round Thermal Hair Brush - CI-45 (1 3/4") Instruction Manual

Model: 1312-01412

## INTRODUCTION

The Olivia Garden Ceramic + Ion Round Thermal Hair Brush is designed for professional and home use, offering advanced features for efficient hair styling. This non-electrical brush incorporates ceramic and ion technologies to enhance your blow-drying experience, resulting in smoother, shinier hair with reduced frizz.





*Image: The Olivia Garden Ceramic + Ion Round Thermal Hair Brush, CI-45 (1 3/4 inch) model, featuring a white and grey design.*

## PRODUCT FEATURES

- **Ceramic Coated Barrel:** The barrel is coated with ceramic, which heats up faster and retains heat longer, contributing to quicker drying times and improved styling.
- **Tourmaline Ionic Bristles:** These ion-charged bristles help to add shine, tame frizz, and eliminate fly-aways, promoting a smoother finish.
- **Large Vents:** Designed with large vents to maximize airflow, further reducing drying time.
- **Lightweight & Ergonomic Handle:** Provides comfortable handling and reduces strain during styling.
- **Snag-Free Design:** The brush features a seamless design to prevent hair from snagging or pulling.
- **Retractable Sectioning Pick:** A convenient pick integrated into the handle allows for easy sectioning of

hair during styling.



- **Ceramic Coated Barrel**  
heats faster and retains heat longer
- **Tourmaline Ionic Bristles**  
add shine, tame frizz, and eliminate fly-aways
- **Style in Comfort**  
with a lightweight, ergonomic handle and snag-free ring

# Treat yourself.

Enjoy luxurious, pro-level styling. Advanced tech + premium design for a brush that glides through hair and delivers beautiful results every time.

*Image: A detailed view of the brush, illustrating the ceramic coated barrel for heat retention, tourmaline ionic bristles for shine and frizz control, and the ergonomic, snag-free design.*

# The Brush Stylists Believe In



**Large Vents**  
reduce drying time



**Ionic Bristles**  
adds more shine



**Retractable  
Sectioning Pick**

*Image: The brush being used on hair, emphasizing its large vents for reduced drying time, ionic bristles for added shine, and the retractable sectioning pick for precise styling.*

## OPERATING INSTRUCTIONS

### Preparation:

- Ensure hair is clean and towel-dried to remove excess water.
- For best results, apply a heat protectant or styling product suitable for your hair type.

### Blow-Drying Technique:

1. **Section Hair:** Use the retractable sectioning pick located at the end of the brush handle to divide your hair into manageable sections.
2. **Start at the Roots:** Place the brush at the roots of a section of hair. Direct the airflow from your hair dryer onto the hair section, following the brush.
3. **Smooth and Roll:** Slowly pull the brush through the hair section, rotating it as you go to create tension and shape. Keep the hair dryer nozzle pointed downwards to smooth the cuticle and enhance shine.
4. **Create Volume:** For added volume, lift sections of hair at the roots with the brush and direct heat underneath. Hold for a few seconds to set.
5. **Curl/Wave Creation:** To create curls or waves, wrap a section of hair around the brush barrel. Apply

heat, then allow the hair to cool slightly on the brush before gently unwinding.

6. **Repeat:** Continue with each section until your hair is completely dry and styled as desired.

This brush is suitable for use on both wet and dry hair, in conjunction with a hair dryer.

## MAINTENANCE

---

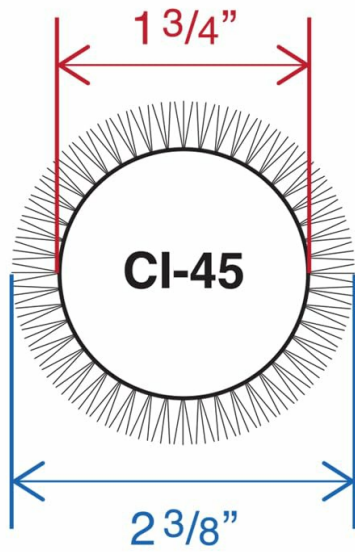
- **Regular Cleaning:** Remove loose hair from the bristles after each use to prevent buildup and maintain brush performance.
- **Deep Cleaning:** Periodically wash the brush with mild soap and lukewarm water. Gently scrub the bristles and barrel. Rinse thoroughly and allow to air dry completely before next use.
- **Storage:** Store the brush in a clean, dry place away from direct sunlight or extreme temperatures to prolong its lifespan.
- **Avoid Harsh Chemicals:** Do not use harsh chemicals or abrasive cleaners on the brush, as this may damage the ceramic coating or bristles.

## SPECIFICATIONS

---

<b>Brand</b>	Olivia Garden
<b>Model Number</b>	1312-01412
<b>Product Dimensions</b>	3.7 x 5.9 x 3 inches
<b>Item Weight</b>	2.89 ounces
<b>Handle Material</b>	Ceramic
<b>Special Feature</b>	CI-45 (1 3/4")
<b>Shape</b>	Round
<b>Color</b>	White/Grey

# Barrel & Bristle Diameters



*Image: A visual representation of the CI-45 brush's dimensions, indicating a barrel diameter of  $1\frac{3}{4}$  inches and an overall bristle-to-bristle diameter of  $2\frac{3}{8}$  inches.*

# Finish with Finesse



*Image: A detailed view of the CI-45 brush head, confirming the 1 3/4 inch barrel diameter and 2 3/8 inch bristle-to-bristle diameter for precise styling.*

## AVAILABLE SIZES

The Olivia Garden Ceramic + Ion Round Thermal Hair Brush is available in various sizes to suit different hair lengths and styling needs:

- **Smaller Diameters (e.g., CI-15, CI-20, CI-25):** Ideal for shorter hair or creating tighter curls.
- **Mid-range Diameters (e.g., CI-35, CI-45, CI-55):** Suitable for medium-length hair or achieving loose waves and general styling.
- **Large Diameters (e.g., CI-65, CI-80):** Excellent for adding volume to long hair or creating soft, flowing styles.

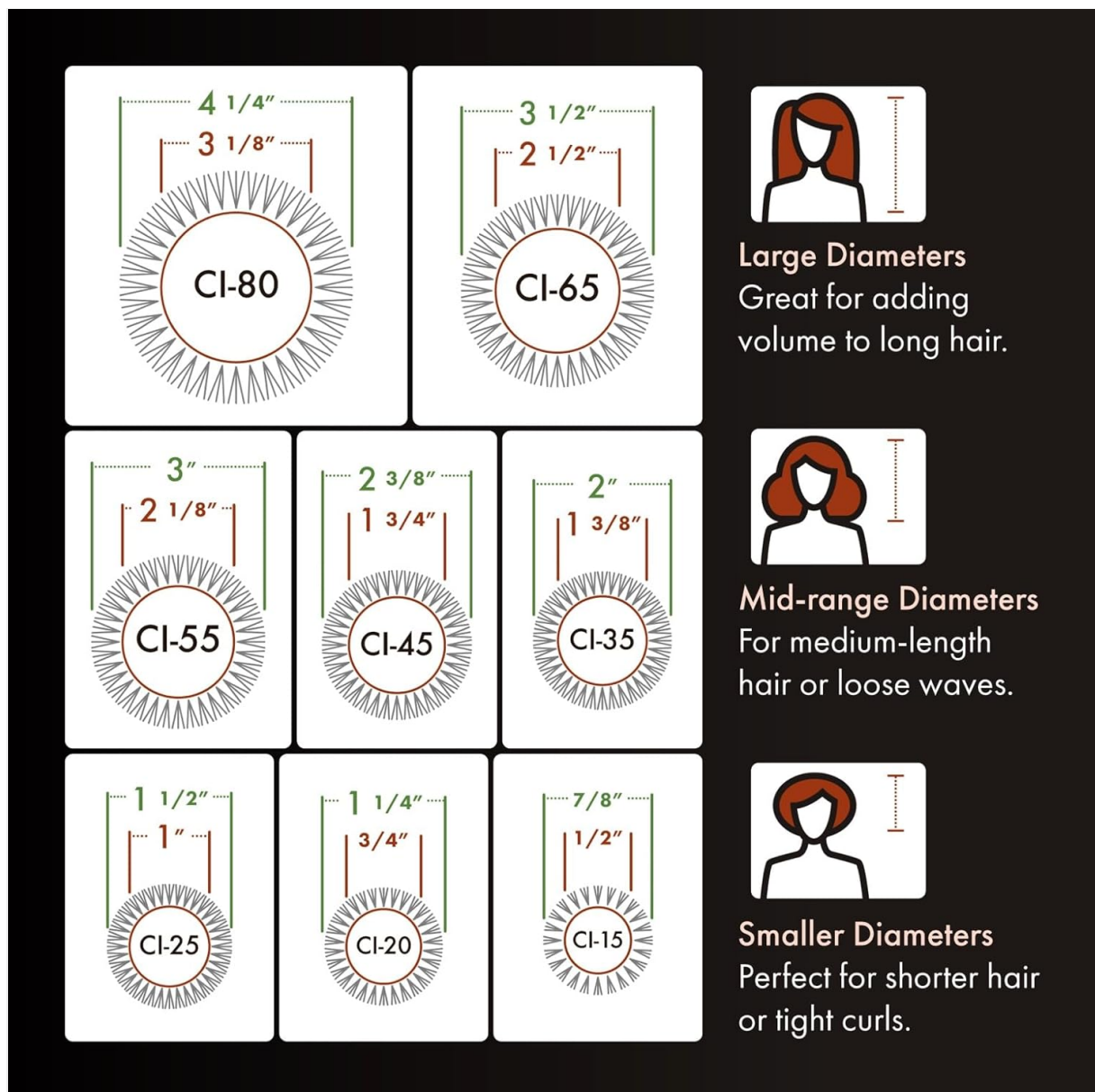


Image: A comprehensive chart displaying the different available sizes of the Ceramic + Ion Thermal Brushes, ranging from CI-15 to CI-80, along with their respective diameters and suggested uses for various hair types and desired styles.

## TROUBLESHOOTING

- **Hair Tangling:** Ensure hair is thoroughly detangled before using the round brush. Work with smaller sections of hair to prevent tangling. If hair gets caught, gently unwind it from the brush rather than pulling.
- **Lack of Volume/Shine:** Confirm hair is not overly wet; it should be towel-dried. Ensure the hair dryer is set to an appropriate heat and speed. For volume, lift hair at the roots and direct heat. For shine, direct airflow down the hair shaft.
- **Frizziness:** The ion-charged bristles are designed to reduce frizz. Ensure you are using the brush with a hair dryer, directing the airflow downwards to smooth the hair cuticle. Consider using an anti-frizz serum before blow-drying.
- **Bristle Damage:** Avoid excessive heat directly on the bristles for prolonged periods. Clean the brush regularly to prevent hair and product buildup that can stress bristles.

## WARRANTY AND SUPPORT

For information regarding product warranty, returns, or customer support, please refer to the official Olivia Garden website or contact their customer service directly. Keep your purchase receipt as proof of purchase.

© 2023 Olivia Garden. All rights reserved.