

[Manuals.plus](#) /

› [Dornbracht](#) /

› Dornbracht Madison Flair 20700370 Three-Hole Basin Mixer Faucet Instruction Manual

Dornbracht 20700370

Dornbracht Madison Flair 20700370 Three-Hole Basin Mixer Faucet Instruction Manual

Model: 20700370 | Brand: Dornbracht

1. INTRODUCTION

Thank you for choosing the Dornbracht Madison Flair 20700370 Three-Hole Basin Mixer Faucet. This manual provides essential information for the safe and efficient installation, operation, and maintenance of your new faucet. Please read these instructions carefully before installation and retain them for future reference. Proper installation and care will ensure long-lasting performance and satisfaction.

2. PRODUCT DESCRIPTION

The Dornbracht Madison Flair 20700370 is a high-quality three-hole basin mixer faucet, distinguished by its elegant platinum finish. It features a rigid spout with a projection of 135 mm, delivering a round, aerated water spray. The faucet has a total height of 72 mm, with the aerator positioned at 40 mm. It is designed for basins with an overflow and requires drilling diameters of 32 mm for the side valves and 35 mm for the spout. The faucet comes without a rosette and includes two 1/2" x 1/2" pressure hoses. It boasts a maximum flow rate of 7 liters per minute and is certified lead-free. Please note that corresponding side valves must be ordered separately to complete the installation.



Figure 1: Dornbracht Madison Flair 20700370 Three-Hole Basin Mixer Faucet. This image displays the complete faucet assembly, including the central spout and two side handles, all in a polished platinum finish, ready for installation.

3. SPECIFICATIONS

Manufacturer	Dornbracht
Model Number	20700370-08
Color	Platinum
Finish Type	Platinum
Material	Ceramic (internal components)
Installation Type	Single hole (for each component)
Mounting Type	Wall Mount (Plug profile)
Number of Handles	1 (per side valve, total 2)
Spout Projection	135 mm

Faucet Height	72 mm
Height to Aerator	40 mm
Drilling Diameter (Side Valve)	32 mm
Drilling Diameter (Spout)	35 mm
Flow Rate (Max)	7 l/min
Special Features	Lead-free, Rigid spout, Aerated spray
Included Components	Basin mixer faucet, 2x pressure hoses 1/2" x 1/2"
Compatibility	Only suitable for basins with overflow

4. SETUP AND INSTALLATION

Installation of the Dornbracht Madison Flair 20700370 faucet requires careful attention to detail. It is recommended that installation be performed by a qualified professional to ensure proper function and to prevent damage. Ensure all necessary components, including the corresponding side valves, are available before beginning.

4.1 Pre-Installation Checks

- Verify that your basin has the required three holes and an overflow.
- Confirm the drilling diameters: 35 mm for the spout and 32 mm for each side valve.
- Ensure water supply lines are shut off before starting.
- Inspect all parts for any damage.

4.2 Installation Steps

1. **Prepare the Basin:** Clean the mounting surfaces on the basin thoroughly.
2. **Install the Spout:** Insert the main spout body into the central 35 mm hole. Secure it from underneath the basin using the provided washers and nuts. Ensure the spout is correctly oriented.
3. **Install Side Valves:** Insert each side valve into its respective 32 mm hole. Secure them from underneath the basin.
4. **Connect Water Supply:** Attach the two 1/2" x 1/2" pressure hoses to the appropriate connections on the side valves and then to your hot and cold water supply lines. Ensure all connections are tight to prevent leaks.
5. **Connect Spout to Side Valves:** Use the internal connections (as shown in the exploded view) to link the side valves to the central spout for water flow.
6. **Test for Leaks:** Slowly turn on the main water supply and check all connections for any signs of leakage. Tighten connections as necessary.
7. **Functionality Test:** Operate the faucet handles to ensure smooth water flow and temperature control.



Figure 2: Technical drawing illustrating the dimensions and required drilling holes for the Dornbracht Madison Flair 20700370 faucet. This diagram provides critical measurements in both millimeters and inches for precise installation, including spout projection, faucet height, and drilling diameters for the three components.

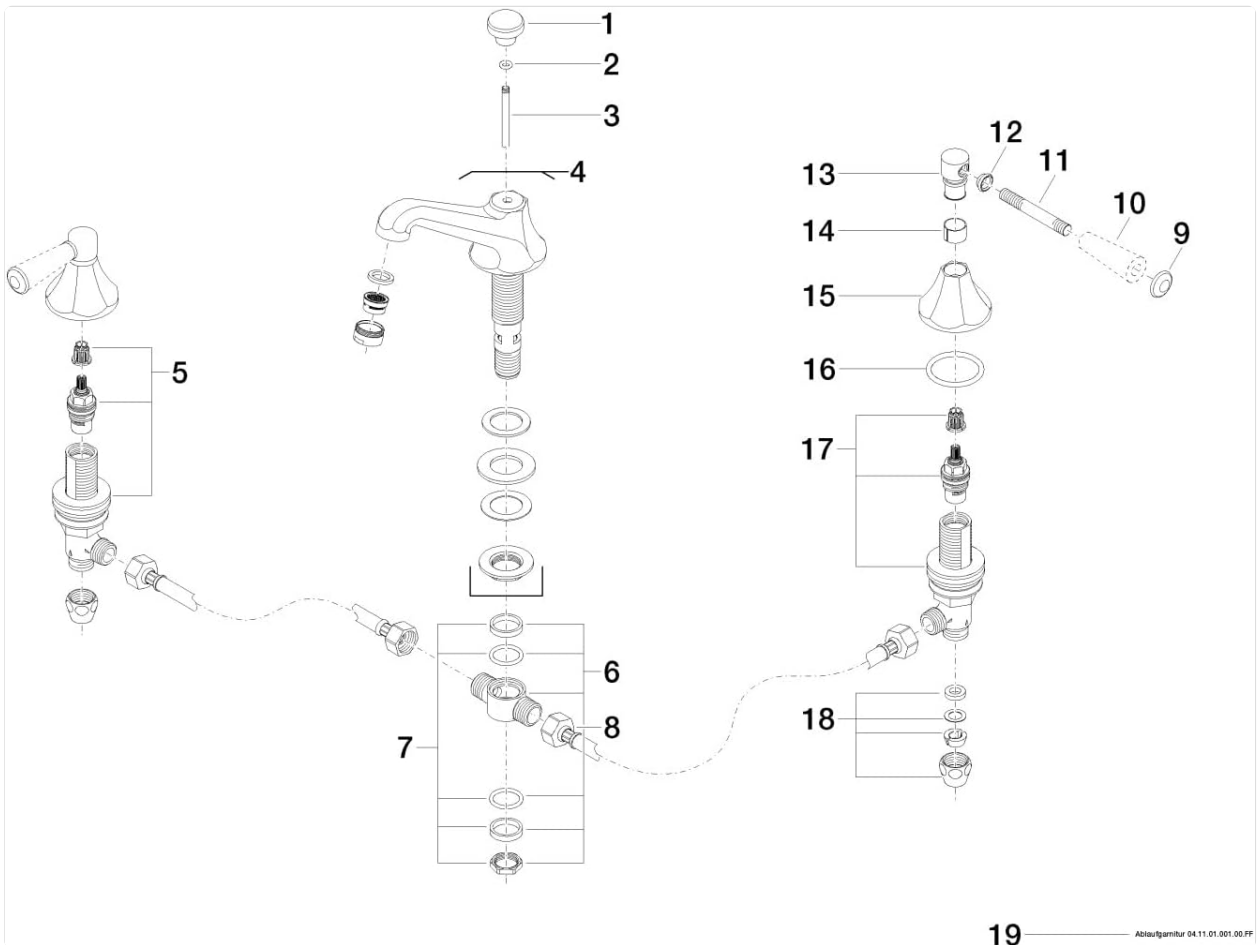


Figure 3: Exploded view diagram of the Dornbracht Madison Flair 20700370 faucet. This illustration details the individual parts and their assembly order, crucial for understanding the internal structure and for any maintenance or repair tasks. Key components are numbered for reference.

5. OPERATING INSTRUCTIONS

The Dornbracht Madison Flair 20700370 faucet is designed for intuitive operation.

- **Water Flow Control:** Use the two side handles to control the water flow. Typically, one handle controls hot water and the other controls cold water.
- **Temperature Adjustment:** Mix hot and cold water by adjusting both handles simultaneously to achieve the desired water temperature.
- **On/Off:** Turn the handles clockwise to shut off the water flow and counter-clockwise to open it.

- **Aerated Spray:** The faucet provides a soft, aerated water stream for comfortable use and reduced splashing.

6. MAINTENANCE

To maintain the pristine appearance and functionality of your Dornbracht faucet, follow these maintenance guidelines:

- **Regular Cleaning:** Clean the faucet regularly with a soft cloth and a mild, non-abrasive cleaning agent. Avoid using harsh chemicals, abrasive sponges, or cleaners containing alcohol, ammonia, or bleach, as these can damage the platinum finish.
- **Drying:** After cleaning, always dry the faucet with a soft cloth to prevent water spots and mineral buildup.
- **Aerator Maintenance:** If water flow becomes weak or uneven, the aerator may be clogged. Unscrew the aerator from the spout, clean it of any debris or mineral deposits, and then reattach it.
- **Avoid Scratches:** Do not use sharp objects or tools directly on the faucet surface.

7. TROUBLESHOOTING

If you encounter issues with your faucet, refer to the following common problems and solutions:

Problem	Possible Cause	Solution
Low water flow	Clogged aerator; partially closed stopcock; debris in water lines.	Clean or replace aerator; ensure stopcocks are fully open; flush water lines.
Leaking from spout	Worn cartridge; loose connections.	Tighten connections; replace cartridge (professional service recommended).
Leaking from base	Loose mounting nuts; damaged O-rings.	Tighten mounting nuts; replace O-rings.
Water temperature inconsistent	Issues with water heater; unbalanced water pressure.	Check water heater settings; consult a plumber for pressure issues.

If these solutions do not resolve the issue, please contact a qualified plumber or Dornbracht customer service for assistance.

8. WARRANTY AND SUPPORT

Dornbracht products are manufactured to high-quality standards. Specific warranty terms and conditions may vary by region and retailer. For detailed information regarding the warranty for your Dornbracht Madison Flair 20700370 faucet, please refer to the documentation provided at the time of purchase or visit the official Dornbracht website. For technical support or service inquiries, please contact your authorized Dornbracht dealer or customer service.