

## Manuals+

[Q & A](#) | [Deep Search](#) | [Upload](#)

manuals.plus /

- › [Pyle](#) /
- › [Pyle PLMRW8 8-Inch Outdoor Marine Audio Subwoofer Instruction Manual](#)

## Pyle PLMRW8

# Pyle PLMRW8 8-Inch Outdoor Marine Audio Subwoofer Instruction Manual

Brand: Pyle

Model: PLMRW8

## PRODUCT OVERVIEW

---

The Pyle PLMRW8 is an 8-inch outdoor marine audio subwoofer designed to enhance your marine stereo sound system. It features a water-resistant construction and powerful bass output, making it suitable for various water vehicles.



Figure 1: Pyle PLMRW8 8-Inch Outdoor Marine Audio Subwoofer.

### Key Features:

- 400 Watt Peak Power with 4 Ohm Impedance.
- 8" High Quality Polypropylene Cone for enhanced sound.
- Water Resistant Construction Design for marine environments.
- 40 oz Magnet Structure and 1.5" High Temperature Voice Coil.
- Frequency Response: 35-3.5K Hz.
- Sensitivity: 91 dB.
- Overall Diameter: 8.5", Mounting Depth: 3.60".

## SETUP AND INSTALLATION

Proper installation is crucial for optimal performance and longevity of your marine subwoofer. Refer to the official user manual (PDF) for detailed diagrams and instructions. A link to the PDF manual is available on the product's Amazon page.

### What's in the Box:



Figure 2: The product package includes the subwoofer unit and the instruction manual.

- Pyle PLMRW8 Subwoofer Unit
- Instruction Manual

### Wiring Diagram:

Ensure correct wiring connections for clear and powerful sound. The subwoofer features screw-down terminals for secure connections. All wiring components are rubber-coated and nickel-plated for corrosion resistance in marine environments.



## SPEAKER WIRE DIAGRAM

# Clear connections for crystal-clear sound.

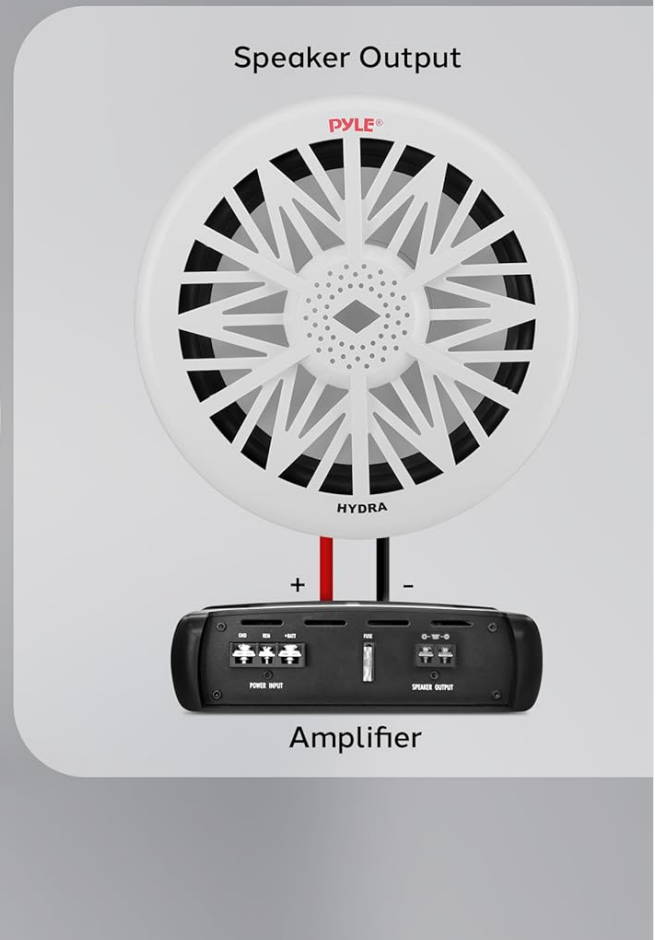


Figure 3: Speaker wire diagram showing connection from amplifier to subwoofer.

Connect the positive (+) terminal of the amplifier output to the positive (+) terminal of the subwoofer. Connect the negative (-) terminal of the amplifier output to the negative (-) terminal of the subwoofer.

### Mounting Considerations:

The PLMRW8 is designed for free-air applications, meaning it does not require a sealed enclosure. It can be installed under or in front of the compartment or helm, or behind the helm seat. You can also mount them inside a box or cooler. Ensure the mounting surface is sturdy enough to support the subwoofer and minimize vibration.

- **Overall Diameter:** 8.5 inches
- **Mounting Depth:** 3.60 inches
- **Speaker Cut-Out Diameter:** 5.31 inches (Note: This seems inconsistent with 8.5" overall diameter, but is from an image. User should verify with actual product manual.)
- **Speaker Total Diameter:** 7.09 inches (Note: This seems inconsistent with 8.5" overall diameter, but is from an image. User should verify with actual product manual.)



## BUILT TO CONQUER THE ELEMENTS

Water-Resistant

Heavy-Duty Construction

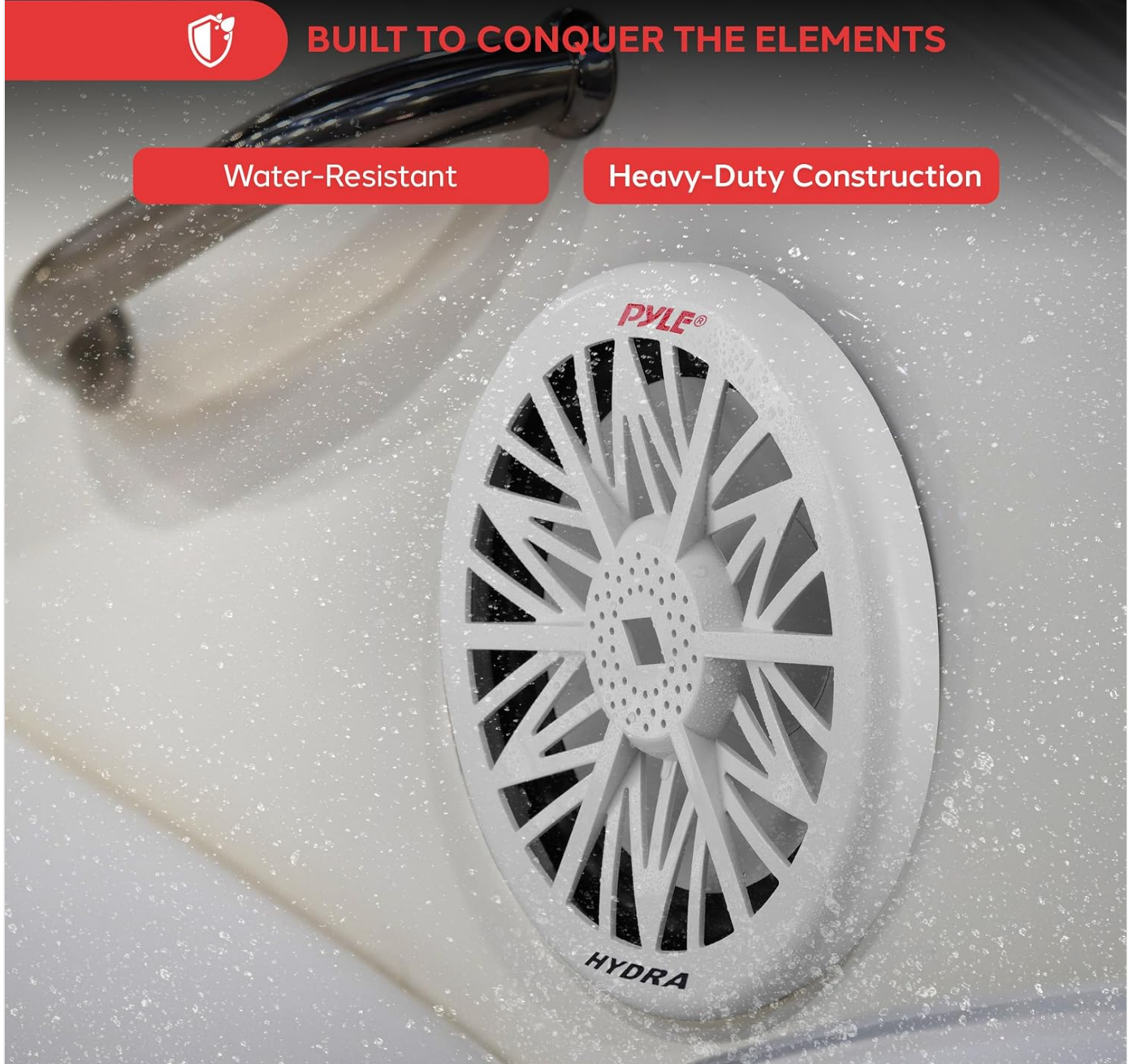


Figure 4: The subwoofer features water-resistant and heavy-duty construction.

### OPERATING

---

Once installed, connect your marine audio system to the subwoofer. Adjust the amplifier settings to achieve the desired bass level. The subwoofer is designed to provide complementary bass, enhancing the overall sound experience without distortion.



## LOUD AND SUPERIOR SOUND

Enhance your audio experience  
with cleaner highs and deep bass.

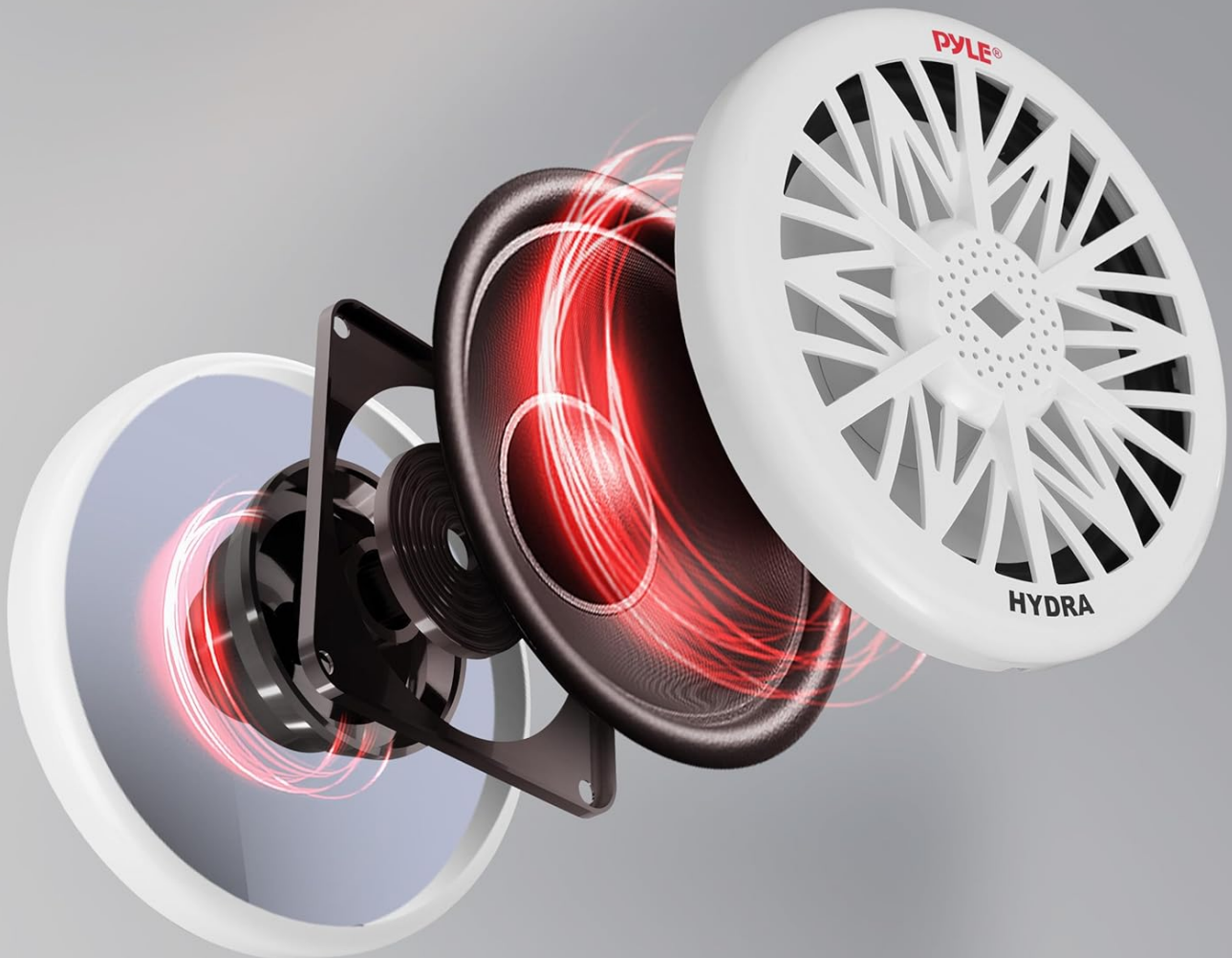


Figure 5: Experience enhanced audio with cleaner highs and deep bass.

For optimal sound, ensure your main speakers are properly configured and balanced with the subwoofer's output. Avoid overdriving the subwoofer, which can lead to distortion and potential damage.

### MAINTENANCE

---

The Pyle PLMRW8 is built with water-resistant construction, but proper care will extend its lifespan. Regularly inspect the subwoofer for any signs of wear or damage, especially after exposure to harsh marine conditions.

- **Cleaning:** Gently wipe down the subwoofer with a damp cloth to remove salt, dirt, or other debris. Avoid using harsh chemicals or abrasive cleaners.
- **Inspection:** Check all connections and mounting points periodically to ensure they remain secure and free from corrosion.
- **Storage:** If the boat is stored for an extended period, especially in humid or extreme temperatures, consider covering the subwoofer or storing it in a climate-controlled environment if possible.

### TROUBLESHOOTING

---

If you experience issues with your Pyle PLMRW8 subwoofer, consider the following common troubleshooting steps:

- **No Sound:**

- Check all wiring connections from the amplifier to the subwoofer for looseness or corrosion.
- Ensure the amplifier is powered on and functioning correctly.
- Verify that the audio source is playing and properly connected to the amplifier.

- **Distorted Sound:**

- Reduce the volume level on your amplifier or head unit.
- Check amplifier gain settings; they might be set too high.
- Inspect the subwoofer cone for any physical damage.

- **Weak Bass:**

- Ensure the subwoofer is wired in phase with your other speakers.
- Check amplifier settings for low-pass filter and bass boost.
- Verify that the mounting is secure and there are no air leaks around the subwoofer.

If problems persist, consult a professional audio technician or contact Pyle customer support.

## **SPECIFICATIONS**

---



## POWER OUTPUT



**Model Number:**  
PLMRW8

**Size:**  
9.5Dx9.25Wx5H"

**Max Power:**  
400 watts

**Impedance:**  
4-ohm

**Mounting Depth:**  
3.60"

**Sensitivity:**  
91 Db

Figure 6: Key specifications of the Pyle PLMRW8 subwoofer.

Feature	Specification
Brand	Pyle
Model Name	PLMRW8
Speaker Type	Subwoofer
Speaker Size	8 Inches
Peak Power	400 Watts

RMS Power	200 Watts (derived from video, 400W peak is 2x RMS)
Impedance	4 Ohm
Frequency Response	35-3.5K Hz
Sensitivity	91 dB
Cone Material	Polypropylene
Magnet Structure	40 oz
Voice Coil	1.5" High Temperature
Overall Diameter	8.5"
Mounting Depth	3.60"
Waterproof	False (Note: Product description states "Water Resistant Construction Design", but specifications list "Is Waterproof: False". This indicates water resistant, not fully submersible/waterproof.)

## WARRANTY AND SUPPORT

---

### Warranty Information:

The Pyle PLMRW8 subwoofer comes with a Limited Warranty. Please note that the warranty does not cover misuse of the product.

### Customer Support:

For further assistance, technical support, or warranty claims, please visit the official Pyle website or contact their customer service department. You can also refer to the [User Manual \(PDF\)](#) for more detailed information.