



Manuals.plus /

- › Bambi /
- › Bambi Plazma Lane Biscuits 600g Instruction Manual

Bambi 600g

Bambi Plazma Lane Biscuits 600g

Instruction Manual

1. PRODUCT OVERVIEW

Bambi Plazma Lane Biscuits are a classic Serbian biscuit, known for their unique flavor and versatility. These biscuits are enriched with vitamins and minerals, making them a nutritious snack suitable for all ages. They are often enjoyed on their own, with beverages, or as an ingredient in various desserts.



Image: Front view of Bambi Plazma Lane Biscuits 600g packaging, highlighting the product and key nutritional facts.

2. INGREDIENTS

The following ingredients are used in Bambi Plazma Lane Biscuits:

- Wheat flour
- Sugar
- Butter (6.7%)
- Soybean flour
- Vegetable fat (palm)
- Honey
- Dextrose
- Whey powder
- Skimmed milk powder
- Raising agents (ammonium bicarbonate, sodium bicarbonate)
- Salt
- Emulsifier (soy lecithin)
- Antioxidant (potassium metabisulphite)
- Artificial flavor

Allergen Information: Contains Wheat, Milk, Soy. May contain Sesame Seeds.

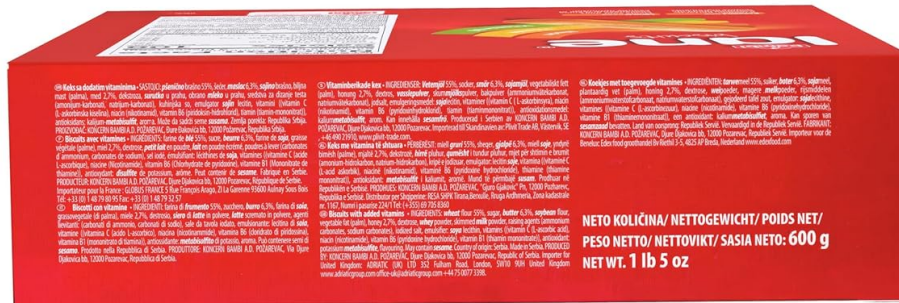


Image: Back view of the biscuit packaging, detailing the ingredients and allergen information.

3. NUTRITIONAL INFORMATION

Refer to the table below for the nutritional values per serving:

Nutrition Facts (Per 3 pieces / 25g serving)

Nutrient	Amount per serving	% Daily Value*
Calories	108	
Total Fat	3.1g	4%
Saturated Fat	1.4g	7%
Trans Fat	0g	
Cholesterol	0mg	0%
Sodium	0.04g	2%
Total Carbohydrate	17g	6%
Dietary Fiber	0.7g	3%
Total Sugars	5.3g	
Includes Added Sugars	4.7g	9%
Protein	2.8g	
Vitamin D	0mcg	0%
Calcium	10mg	0%
Iron	0.5mg	3%
Potassium	40mg	1%
Vitamin C	3.4mg	3%
Niacin	3.5mg	22%
Vitamin B6	0.4mg	24%

*The % Daily Value (DV) tells you how much a nutrient in a serving of food contributes to a daily diet. 2,000 calories a day is used for general nutrition advice.

4. STORAGE INSTRUCTIONS

To maintain the freshness and quality of your Bambi Plazma Lane Biscuits, please follow these storage guidelines:

- Store in a cool, dry place, away from direct sunlight and heat.
- Once opened, keep the biscuits in an airtight container to prevent them from becoming stale.
- Avoid storing near strong-smelling foods, as biscuits can absorb odors.

5. SERVING SUGGESTIONS

Bambi Plazma Lane Biscuits are incredibly versatile and can be enjoyed in many ways:

- **As a Snack:** Enjoy them plain as a mildly sweet snack.
- **With Beverages:** Perfect for dipping in milk, tea, or coffee.

- **With Spreads:** Pair them with Nutella or other spreads for an enhanced flavor.
- **In Desserts:** Crush them to create a delicious pie crust, use as an ice cream topping, or incorporate into no-bake cakes and other dessert fillings.
- **For Children:** A popular choice for children, often mixed with milk or fruit purees.

6. PRODUCT SPECIFICATIONS

Specification	Detail
Brand	Bambi
Flavor	Plazma
Item Form	Biscuit
Package Type	Box
Net Weight	600g (1.32 Pounds)
Package Dimensions	8.74 x 7.32 x 2.52 inches
Product Benefits	Nutritious and enriched with vitamins and minerals
Cuisine	Serbian cuisine
Age Range Description	All Life Stages

7. MANUFACTURER INFORMATION

Manufactured by: Bambi a.d., Serbia

For more information, please refer to the contact details on the product packaging or visit the official Bambi website.

8. IMPORTANT NOTES

Statements regarding dietary supplements have not been evaluated by the FDA and are not intended to diagnose, treat, cure, or prevent any disease or health condition.

9. ADDITIONAL PRODUCT VIEWS



Image: Side view of the biscuit box.



Image: Top view of the biscuit box.