

Manuals.plus /

› Conair /

› INFINITIPRO BY CONAIR Tourmaline 3/4-Inch Ceramic Curling Iron Instruction Manual

## Conair CD106NN

# INFINITIPRO BY CONAIR Tourmaline 3/4-Inch Ceramic Curling Iron Instruction Manual

Model: CD106NN

## INTRODUCTION

---

This manual provides essential instructions for the safe and effective use of your INFINITIPRO BY CONAIR Tourmaline 3/4-Inch Ceramic Curling Iron. Designed to create tight curls, this appliance features advanced tourmaline ceramic technology to help reduce frizz and enhance hair's natural shine. Please read all instructions thoroughly before use and retain this manual for future reference.





*Image: The INFINITIPRO BY CONAIR Tourmaline 3/4-Inch Ceramic Curling Iron, featuring a gold-colored barrel and a dark gray handle with control buttons.*

## IMPORTANT SAFEGUARDS

---

When using electrical appliances, especially when children are present, basic safety precautions should always be followed, including the following:

- **READ ALL INSTRUCTIONS BEFORE USING.**
- **KEEP AWAY FROM WATER.** Do not use this appliance near bathtubs, showers, basins, or other vessels containing water.
- Always unplug the appliance immediately after use.
- Do not use while bathing or in a shower.
- Do not place or store appliance where it can fall or be pulled into a tub or sink.
- Do not place in or drop into water or other liquid.
- If an appliance falls into water, unplug it immediately. Do not reach into the water.

- This appliance is hot when in use. Do not let heated surfaces touch skin.
- Never block the air openings of the appliance or place it on a soft surface, such as a bed or couch, where the air openings may be blocked.
- Keep the cord away from heated surfaces. Do not pull, twist, or wrap cord around the appliance.
- Never use while sleeping.
- Never drop or insert any object into any opening.
- Do not use outdoors or operate where aerosol (spray) products are being used or where oxygen is being administered.
- Do not use an extension cord with this appliance.
- The appliance has an automatic shut-off feature for added safety.
- This product contains chemicals known to the State of California to cause cancer and birth defects or other reproductive harm.

## PRODUCT FEATURES

---

The INFINITIPRO BY CONAIR Tourmaline Ceramic Curling Iron is engineered with several features to optimize your hair styling experience:

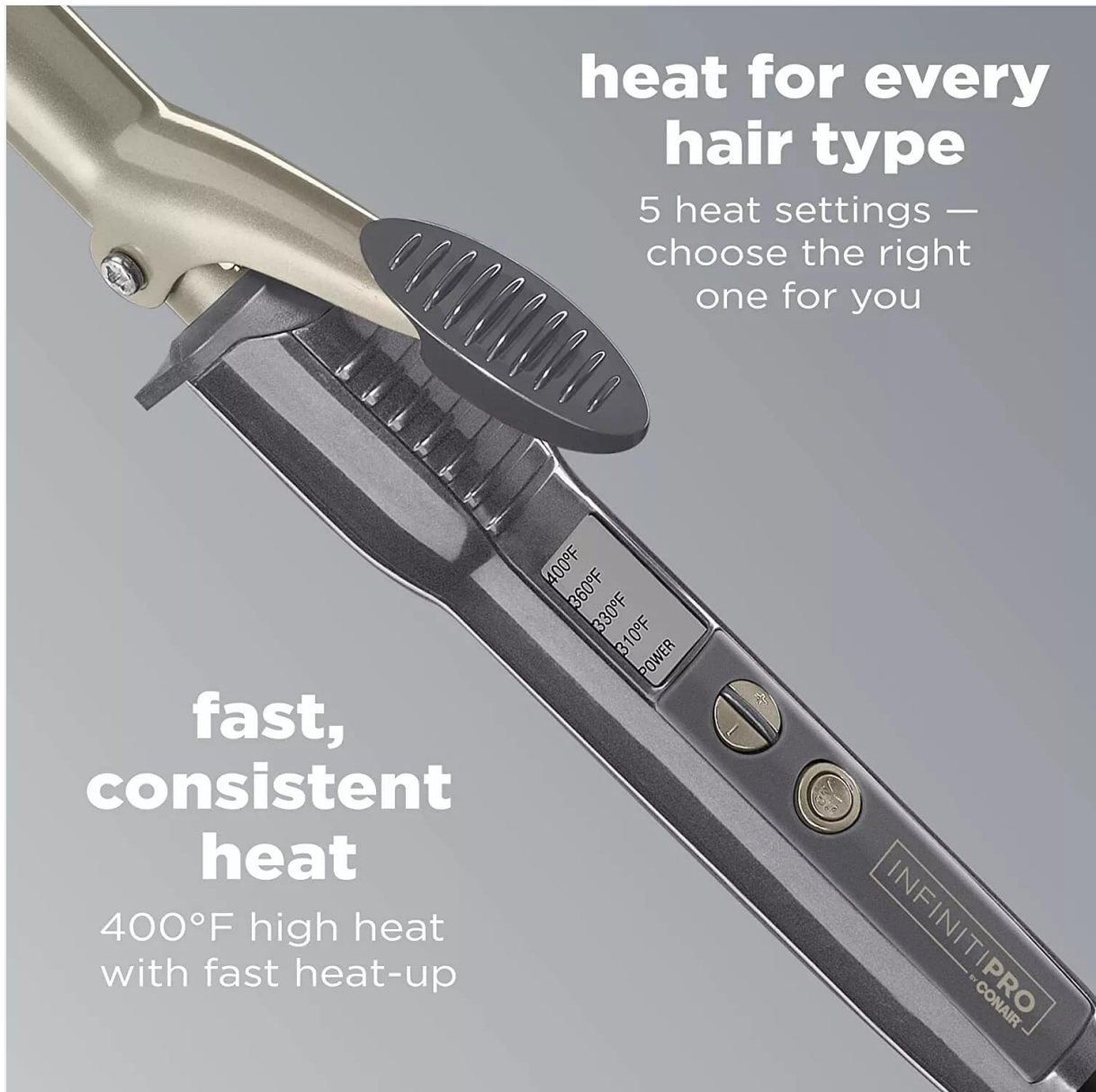
- **Tourmaline Ceramic Technology:** The 3/4-inch barrel is coated with tourmaline ceramic, which emits ions to reduce frizz and enhance hair's natural luster, resulting in healthy-looking, shiny hair.
- **Infrared Energy:** Protects hair's natural shine during styling.
- **High Heat Performance:** Reaches up to 400°F (205°C) for effective styling.
- **Fast Heat-Up:** Heats up in approximately 30 seconds.
- **Uniform Heat Recovery:** Maintains consistent heat levels during use, preventing hot spots.
- **Multiple Heat Settings:** Features 5 distinct heat settings to accommodate various hair types.
- **Auto-Off Feature:** Automatically shuts off for enhanced safety.
- **Swivel Power Cord:** A 6-foot swivel cord provides flexibility and ease of use.
- **Protective Heat Shield:** Included for safe storage after use.



## less frizz, more shine

$\frac{3}{4}$ " tourmaline ceramic barrel reduces frizz and  
boosts shine for healthy-looking hair

*Image: Close-up of the curling iron barrel with text indicating that the 3/4-inch tourmaline ceramic barrel reduces frizz and boosts shine for healthy-looking hair.*



## heat for every hair type

5 heat settings —  
choose the right  
one for you

## fast, consistent heat

400°F high heat  
with fast heat-up

*Image: The handle of the curling iron displaying the digital heat settings (400°F, 380°F, 350°F, 310°F) and power button, highlighting fast, consistent heat for every hair type.*

### SETUP

---

1. **Unpack:** Carefully remove the curling iron and all accessories from the packaging.
2. **Inspect:** Check the appliance for any signs of damage. Do not use if damaged.
3. **Placement:** Ensure the appliance is placed on a heat-resistant surface during use.
4. **Plug In:** Insert the power cord into a standard electrical outlet (110-120V AC).

### OPERATING INSTRUCTIONS

---

Follow these steps for optimal curling results:

1. **Prepare Hair:** Ensure hair is clean, dry, and free of tangles. For best results, use on short to medium hair lengths.
2. **Power On:** Plug the curling iron into an electrical outlet. Press and hold the power button until the indicator light illuminates.
3. **Select Heat Setting:** Use the temperature control buttons to select your desired heat setting. The iron offers

5 settings, with a maximum of 400°F (205°C). Allow approximately 30 seconds for the iron to reach the selected temperature.

4. **Section Hair:** Divide your hair into small, manageable sections, typically 1-inch wide.
5. **Curl Hair:** Open the clamp and place a section of hair between the clamp and the barrel, starting about an inch from the scalp. Close the clamp and gently slide the iron down to the hair ends. Roll the hair up towards the scalp, ensuring the hair is evenly distributed around the barrel. Hold for a few seconds (duration depends on hair type and desired curl intensity).
6. **Release Curl:** Open the clamp and gently release the curl. Do not pull the iron straight out, as this may disrupt the curl pattern.
7. **Cool Down:** Allow the curl to cool completely before styling or brushing to set the curl.
8. **Power Off:** After use, press and hold the power button to turn off the appliance. Unplug from the electrical outlet.

## Styling Tips

- For a more natural, beachy look, leave the last inch of hair out when curling.
- Experiment with different heat settings and holding times to find what works best for your hair type and desired curl.

# be the PRO

## styling tip

Leave the last inch of hair out when curling for a more natural, beachy look.



*Image: A close-up of the curling iron barrel with a section of hair being curled, illustrating the tip to leave the last inch of hair out for a natural, beachy look.*



## FIND YOUR CURLING STYLE

				
SPIRAL	TIGHT	CLASSIC	LOOSE	SOFT
1/2"	3/4"	1"	1 1/4"	1 1/2"
Short to Medium Hair	Short to Medium Hair	Short, Medium, and Long Hair	Medium to Long Hair	Medium to Long Hair

*Image: A visual guide demonstrating various curl styles (spiral, tight, classic, loose, soft) and the corresponding barrel sizes (1/2", 3/4", 1", 1 1/4", 1 1/2") and recommended hair lengths. This 3/4" iron is ideal for tight curls on short to medium hair.*

## MAINTENANCE AND CARE

Proper maintenance ensures the longevity and performance of your curling iron:

- **Cleaning:** Ensure the appliance is unplugged and completely cool before cleaning. Wipe the barrel and handle with a damp cloth. Do not use abrasive cleaners or immerse the appliance in water.
- **Storage:** When not in use, store the curling iron in a cool, dry place. Use the included protective heat shield to cover the barrel. Do not wrap the cord around the appliance, as this can cause wear and damage.
- **Cord Care:** Regularly inspect the power cord for any damage. If the cord is damaged, discontinue use and contact customer support.

## TROUBLESHOOTING

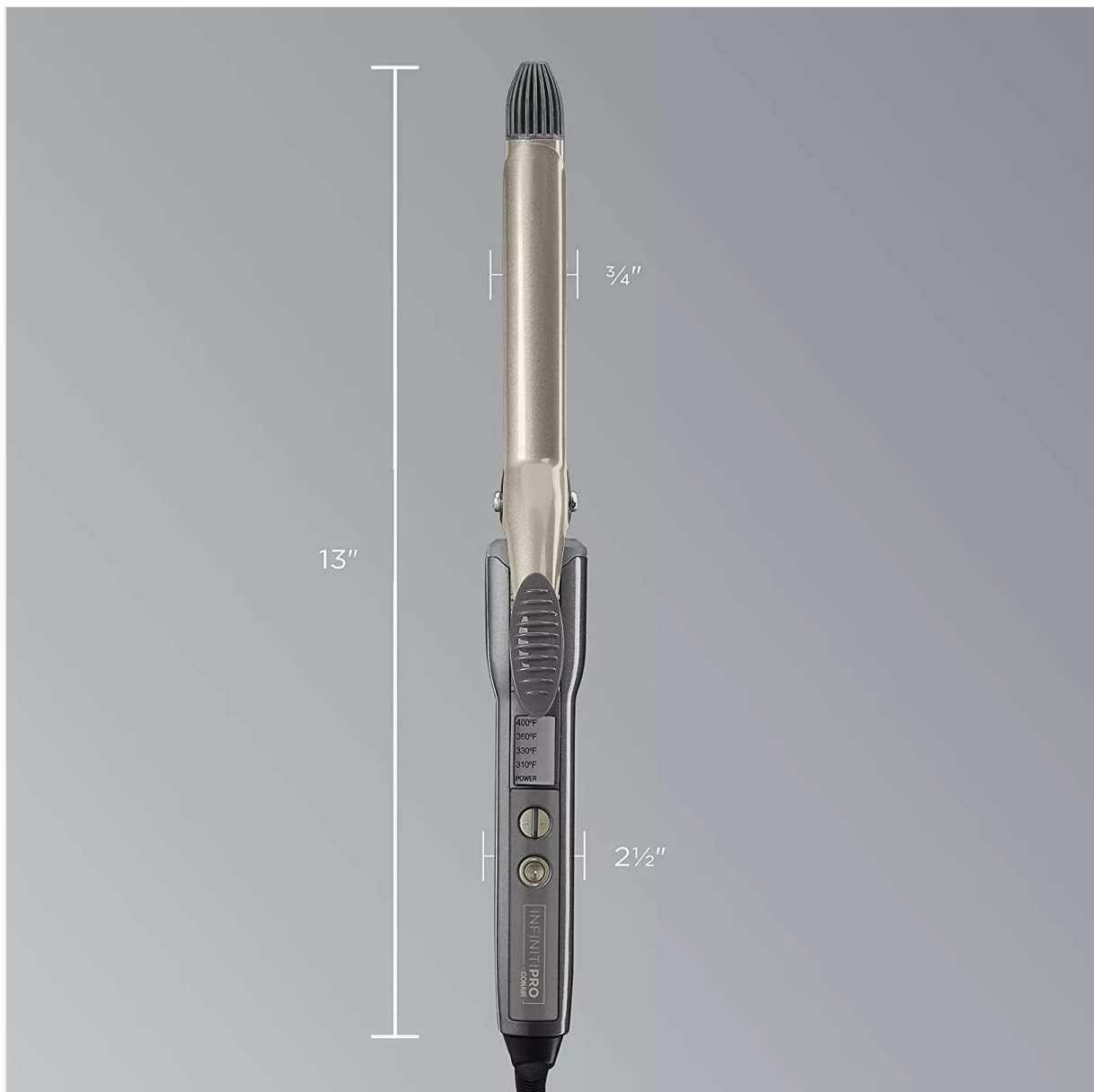
If you encounter issues with your curling iron, refer to the following common solutions:

- **Appliance Not Heating:**

- Ensure the power cord is securely plugged into a working electrical outlet.
  - Verify that the power button has been pressed and held until the indicator light is on.
  - Check if the outlet is functional by plugging in another appliance.
- **Curls Not Holding:**
    - Ensure hair is completely dry before curling.
    - Increase the heat setting (within safe limits for your hair type).
    - Hold the hair on the barrel for a longer duration.
    - Allow curls to cool completely before touching or styling.
    - Ensure hair sections are small and manageable.
- **Hair Snagging or Pulling:**
    - Ensure hair is thoroughly detangled before use.
    - Check for any residue or product buildup on the barrel and clean if necessary.

## SPECIFICATIONS

<b>Brand</b>	Conair
<b>Model Number</b>	CD106NN
<b>Barrel Size</b>	3/4-Inch
<b>Material</b>	Tourmaline Ceramic
<b>Max Temperature</b>	400°F (205°C)
<b>Heat Settings</b>	5
<b>Heat-Up Time</b>	Approximately 30 seconds
<b>Cord Length</b>	6 feet (swivel)
<b>Safety Features</b>	Automatic Shut-Off
<b>Product Dimensions</b>	12.5 x 1.2 x 3 inches
<b>Item Weight</b>	14.4 ounces



*Image: A diagram illustrating the dimensions of the curling iron, showing a total length of 13 inches, a 3/4-inch barrel diameter, and a handle width of 2 1/2 inches.*

## **WARRANTY AND SUPPORT**

For information regarding warranty coverage or to obtain customer support, please refer to the warranty card included with your product packaging or visit the official Conair website. Do not attempt to repair the appliance yourself.