



[Manuals.plus](#) /

- › [Hayden Enterprises Inc](#) /
- › Hayden Enterprises Inc M6-BT01 Primary Chain Tensioner Instruction Manual

## Hayden Enterprises Inc M6-BT01

# Hayden Enterprises Inc M6-BT01 Primary Chain Tensioner Instruction Manual

Model: M6-BT01

## 1. INTRODUCTION

---

The Hayden Enterprises Inc M6-BT01 Primary Chain Tensioner is designed to automatically maintain optimal tension on your motorcycle's primary drive chain. This system contributes to smoother gear shifts, significantly reduces engine vibration, and extends the operational life of both the primary chain and sprockets. This manual provides essential information for the correct installation, operation, and maintenance of your M6-BT01 tensioner.

## 2. SAFETY INFORMATION

---

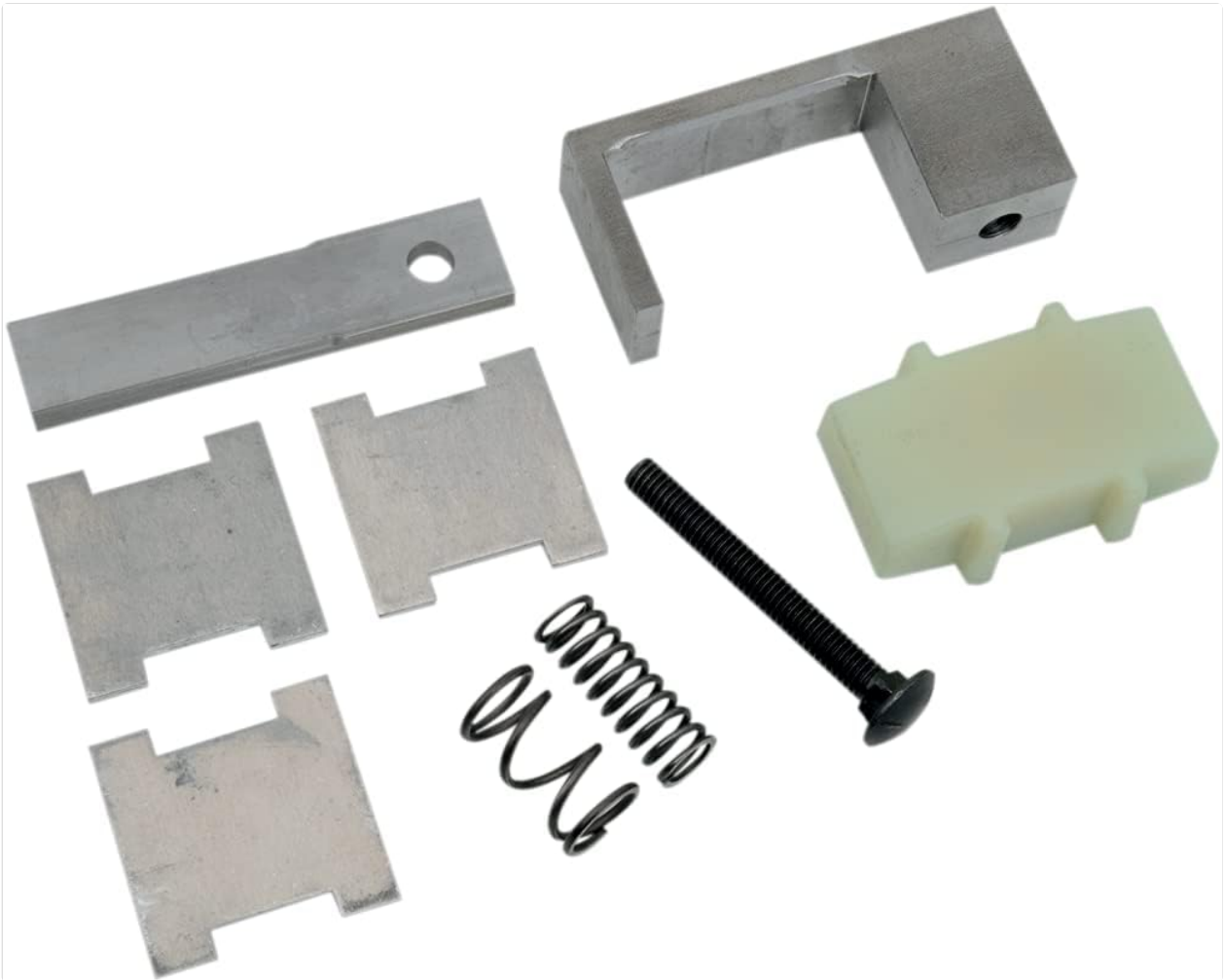
Always prioritize safety when working on your motorcycle. Improper installation or maintenance can lead to serious injury or damage to the vehicle. If you are unsure about any step, consult a qualified motorcycle mechanic.

- Ensure the motorcycle is stable and secure on a stand before beginning any work.
- Disconnect the battery to prevent accidental starting or electrical shorts.
- Wear appropriate personal protective equipment, including safety glasses and gloves.
- Allow the engine and exhaust system to cool completely before handling components.
- Refer to your motorcycle's service manual for specific torque specifications and primary fluid requirements.
- Dispose of old fluids and parts responsibly according to local regulations.

## 3. PACKAGE CONTENTS

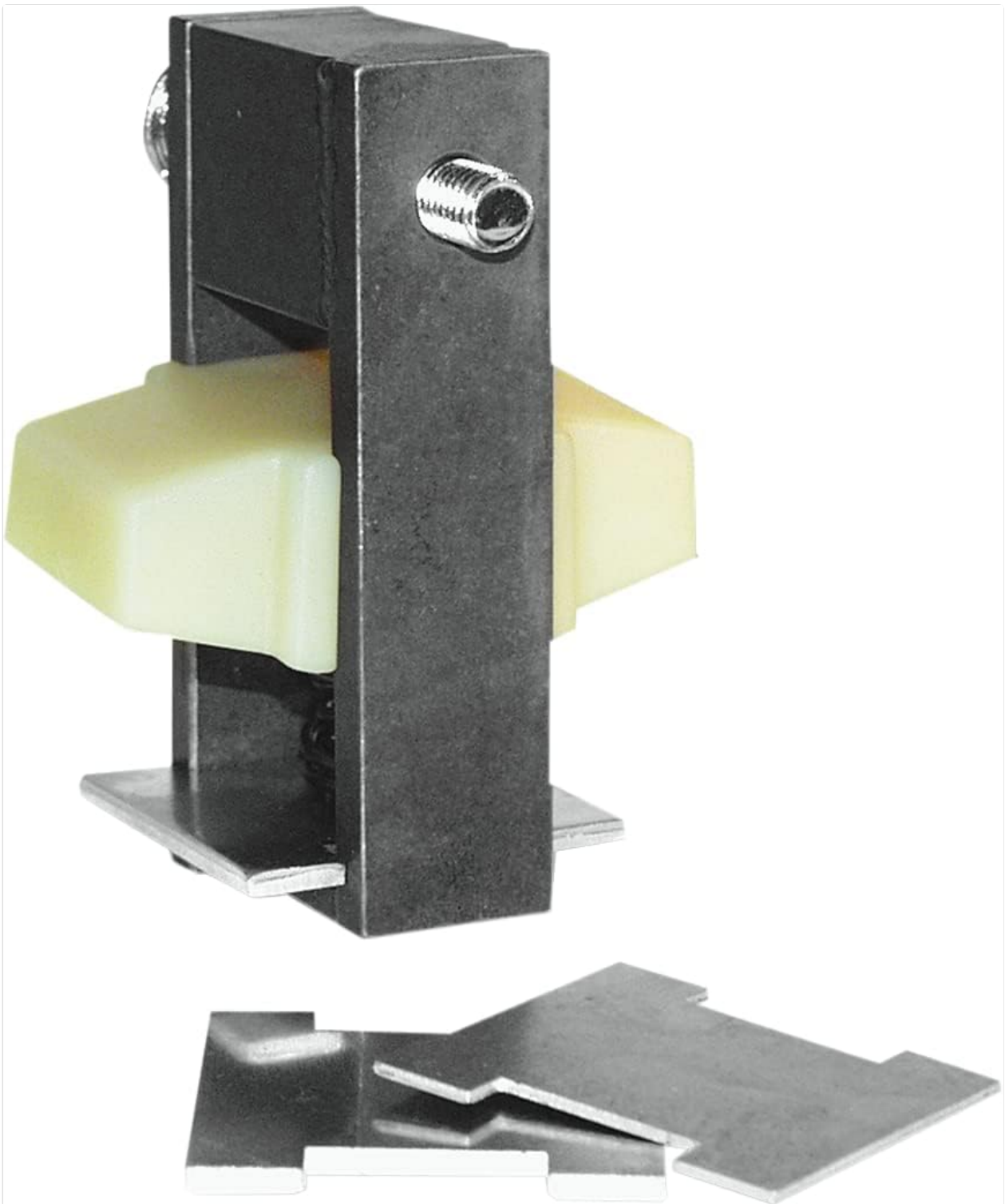
---

Verify that all components listed below are present in your package before beginning installation. A primary gasket is not included and must be purchased separately.



**Figure 3.1:** All components of the M6-BT01 Primary Chain Tensioner, including the main body, tensioner shoe, spring, bolt, and various shims.

- M6-BT01 Tensioner Main Body
- Tensioner Shoe (Nylon/Polymer block)
- Compression Spring
- Mounting Bolt
- Assorted Shims/Spacers
- L-Bracket (if applicable to specific model variant)



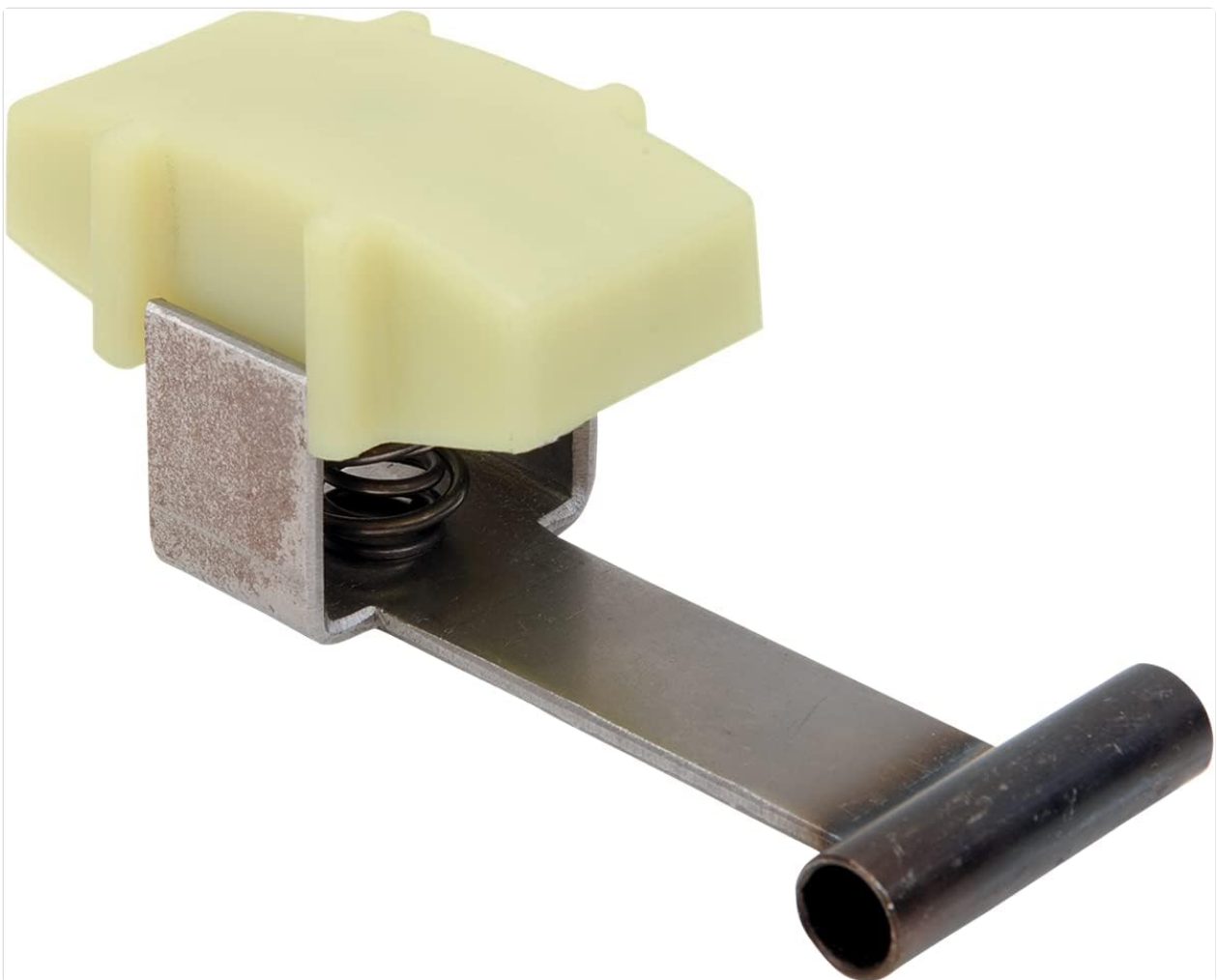
**Figure 3.2:** The Hayden M6-BT01 Primary Chain Tensioner fully assembled, showing the main body, tensioner shoe, and shims.

## 4. INSTALLATION

The installation process for the M6-BT01 tensioner is designed to be straightforward. However, it requires careful attention to detail and adherence to your motorcycle's specific service procedures. A new primary gasket is required and not included with this product.

1. **Prepare the Motorcycle:** Place the motorcycle on a stable stand. Ensure the engine is cool. Disconnect the negative battery cable.
2. **Drain Primary Fluid:** Position a drain pan beneath the primary cover. Remove the primary drain plug and allow all fluid to drain completely.

3. **Remove Primary Cover:** Carefully remove all bolts securing the primary cover. Gently pry the cover off, being mindful of the gasket. Discard the old gasket.
4. **Remove Existing Tensioner:** Locate and remove the existing primary chain tensioner. This typically involves unbolting it from its mounting points.
5. **Install M6-BT01 Tensioner:** Position the M6-BT01 tensioner in the primary case according to your motorcycle's service manual. Secure it with the provided mounting bolt, ensuring it is properly seated. The tensioner shoe should rest against the primary chain.
6. **Check Chain Clearance:** Rotate the engine slowly by hand (e.g., by rotating the rear wheel in gear) to ensure the tensioner shoe makes proper contact with the chain and there is no binding. The automatic mechanism will adjust the tension.
7. **Reinstall Primary Cover:** Clean both mating surfaces thoroughly. Install a new primary gasket. Carefully position the primary cover and secure it with the bolts. Tighten bolts in a crisscross pattern to the manufacturer's specified torque.
8. **Refill Primary Fluid:** Remove the primary fill plug and add the recommended amount and type of primary fluid as specified in your motorcycle's service manual. Reinstall the fill plug.
9. **Reconnect Battery:** Reconnect the negative battery cable.
10. **Initial Start-up:** Start the engine and allow it to idle. Listen for any unusual noises. Check for fluid leaks around the primary cover.



**Figure 4.1:** Detailed view of the M6-BT01 tensioner shoe, illustrating its contact surface and the spring mechanism that provides automatic tension adjustment.

## 5. OPERATION

---

The M6-BT01 is an automatic primary chain tensioner. Once installed, it continuously adjusts the primary chain tension to compensate for wear and stretch. This automatic adjustment eliminates the need for manual adjustments, ensuring consistent performance and reducing wear on components.

- The tensioner uses a spring-loaded mechanism to apply constant, optimal pressure to the primary chain.
- This constant pressure minimizes chain slack, which is crucial for smooth power delivery and reduced drivetrain noise.
- No user intervention is required for tension adjustment after proper installation.

## 6. MAINTENANCE

---

While the M6-BT01 tensioner is designed for minimal maintenance, periodic inspection during routine primary fluid changes is recommended.

- **Inspection (Every Primary Fluid Change):** When the primary cover is removed for fluid changes, visually inspect the tensioner shoe for excessive wear or damage. The shoe is a consumable part and will wear over time.
- **Cleanliness:** Ensure the tensioner mechanism is free from debris or excessive sludge buildup that could impede its movement.
- **Functionality:** Gently press on the tensioner shoe to confirm it moves freely and the spring provides resistance.
- **Replacement:** If the tensioner shoe shows significant grooving, cracking, or the spring mechanism feels weak or seized, replacement of the tensioner may be necessary.

## 7. TROUBLESHOOTING

---

If you experience issues after installing the M6-BT01 tensioner, consider the following common troubleshooting steps:

- **Excessive Primary Noise:**
  - *Cause:* Incorrect installation, worn primary chain, or insufficient primary fluid.
  - *Solution:* Re-check installation steps, especially primary cover torque. Inspect primary chain for wear. Verify primary fluid level and type.
- **Rough Shifting:**
  - *Cause:* Primary chain tension still incorrect, or clutch adjustment issues.
  - *Solution:* Ensure the tensioner is properly seated and functioning. Check and adjust clutch according to your motorcycle's service manual.
- **Fluid Leaks from Primary Cover:**
  - *Cause:* Improperly installed primary gasket, damaged primary cover, or incorrect torque on cover bolts.
  - *Solution:* Ensure a new primary gasket was used and installed correctly. Re-torque primary cover bolts to specifications. Inspect cover for damage.

## 8. SPECIFICATIONS

---

Feature	Detail
---------	--------

Feature	Detail
Model Number	M6-BT01
Manufacturer	Hayden Enterprises Inc
Product Dimensions	5 x 5 x 2 inches
Item Weight	1.65 pounds
Exterior Finish	Painted
OEM Part Number	M6BT01

## 9. WARRANTY AND SUPPORT

---

For warranty information or technical support regarding your Hayden Enterprises Inc M6-BT01 Primary Chain Tensioner, please contact the manufacturer directly. Keep your proof of purchase for any warranty claims.

*Note:* Specific warranty terms and conditions may vary. Refer to the documentation provided with your purchase or visit the manufacturer's official website for the most current information.

© 2023 Hayden Enterprises Inc. All rights reserved.

This manual is for informational purposes only. Hayden Enterprises Inc is not responsible for damages or injuries resulting from improper installation or use of this product.