

SINGER 1925

SINGER Sew-Quik Threaded Hand Needle Kit Model 1925 User Manual

1. INTRODUCTION

The SINGER Sew-Quik Threaded Hand Needle Kit, Model 1925, is designed for quick and convenient minor sewing repairs. This compact, TSA-friendly kit provides essential tools for mending clothing while traveling or away from home. It is ideal for small fixes such as reattaching buttons or repairing small tears.

Kit Contents:

- 10 pre-threaded hand needles in assorted colors
- 2 buttons
- 1 safety pin
- Compact slider case for organization and protection



Image 1.1: The SINGER Sew-Quik Threaded Hand Needle Kit, open to display its contents including pre-threaded needles in various colors, two buttons, and a safety pin, all neatly organized within the compact case.

2. SETUP

The SINGER Sew-Quik kit comes pre-assembled and ready for use. No complex setup is required. Simply open the compact slider case to access the contents.

Opening the Case:

1. Locate the clear plastic slider cover on the kit.
2. Gently slide the cover to one side to reveal the needles, threads, buttons, and safety pin.
3. Once finished with your repair, slide the cover back into place to secure the contents for storage.



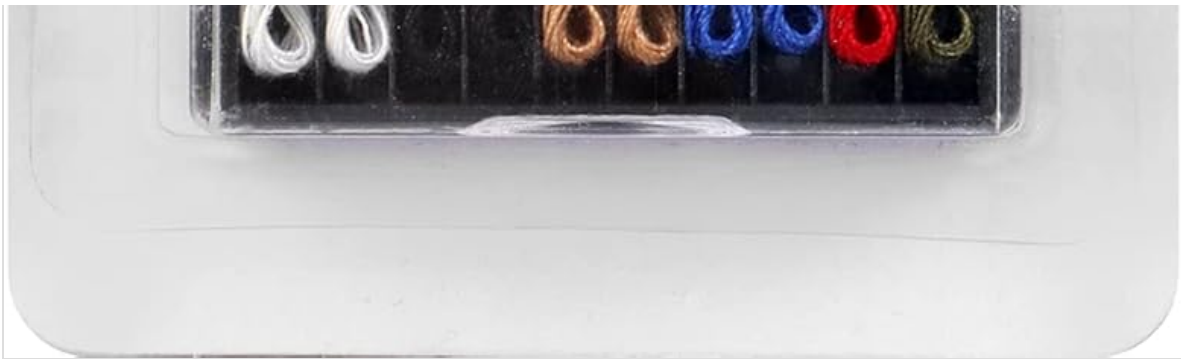


Image 2.1: The SINGER Sew-Quik Kit as it appears in its retail packaging, highlighting its compact design.



Image 2.2: The SINGER Sew-Quik Kit with its clear plastic cover partially slid open, demonstrating how to access the sewing components.

3. OPERATING INSTRUCTIONS

This kit is designed for quick, temporary, or minor repairs. The needles come pre-threaded to save time and effort.

Using Pre-threaded Needles:

1. Select a needle with a thread color that best matches your garment.
2. Carefully pull the chosen needle from its slot. The thread is neatly rolled and will dispense as you pull.
3. Make a knot at the end of the thread if not already present.
4. Perform your sewing repair (e.g., mending a seam, attaching a button).
5. Once the repair is complete, secure the thread with a knot and trim any excess.

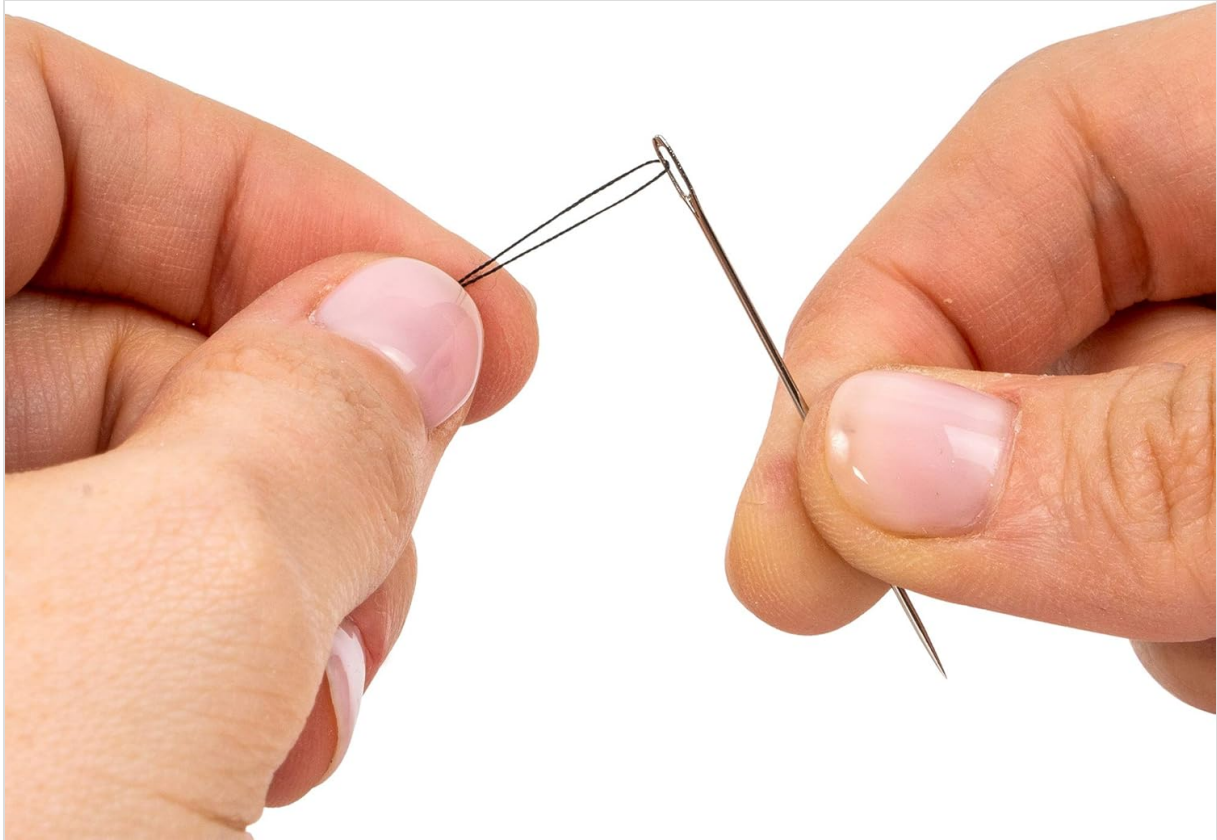


Image 3.1: A close-up view of hands holding a pre-threaded needle, illustrating its immediate usability for sewing tasks.

Using Buttons and Safety Pin:

- **Buttons:** Use the included buttons for replacement if a garment button is lost or damaged. Attach using a pre-threaded needle.
- **Safety Pin:** The safety pin can be used for temporary garment closures, securing fabric, or holding items together.

4. MAINTENANCE AND STORAGE

To ensure the longevity and usability of your SINGER Sew-Quik kit, follow these simple maintenance and storage guidelines:

- **Keep Dry:** Store the kit in a dry environment to prevent rust on the needles and safety pin.
- **Secure Contents:** Always ensure the slider case is fully closed when not in use to prevent needles from falling out or becoming damaged.
- **Avoid Extreme Temperatures:** Do not expose the kit to extreme heat or cold, which could affect the plastic case or thread quality.
- **Child Safety:** Keep the kit out of reach of children due to sharp needles and small parts.

5. TROUBLESHOOTING

While the Sew-Quik kit is straightforward, you might encounter minor issues. Here are some common scenarios and solutions:

- **Thread Tangles:** If the thread tangles when pulling a needle, gently unroll it from the compact spool. Avoid pulling too quickly.
- **Needle Breaks:** Hand needles can break if excessive force is applied or if used on very thick or dense fabrics. Use appropriate force for the fabric type.
- **Running Out of Thread:** Each needle comes with a limited length of thread suitable for small repairs. For larger projects, a full sewing kit with spools of thread would be more appropriate.
- **Lost Components:** The compact case helps prevent loss. Always close the case securely after use.

6. SPECIFICATIONS

Feature	Detail
Brand	SINGER
Model Number	1925
UPC	075691019259
Product Dimensions	0.31 x 3.15 x 6.26 inches
Item Weight	0.64 ounces
Material	Polyester (thread)
Included Components	Hand Needles, Buttons, Safety Pin
Manufacturer	Dyno Merchandise

7. WARRANTY AND SUPPORT

Specific warranty information for the SINGER Sew-Quik Threaded Hand Needle Kit Model 1925 is not provided in this manual. For any product-related inquiries, support, or warranty claims, please refer to the SINGER official website or contact their customer service directly. Contact information can typically be found on the product packaging or the brand's official online presence.



[SINGER Needle Guide: Choosing the Right Needle for Your Fabric](#)

A comprehensive guide to SINGER sewing machine needles, detailing needle anatomy, types, sizes, and fabric compatibility. Learn how to select the best SINGER needle for various fabrics and sewing projects to achieve optimal results.



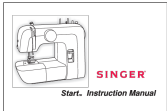
[SINGER Needle Guide: Types, Sizes, and Fabric Compatibility](#)

Explore the SINGER Needle Guide to understand different sewing needle types, sizes, and their ideal fabric applications. Learn about SINGER's superior quality, features, and recommendations for optimal sewing results.



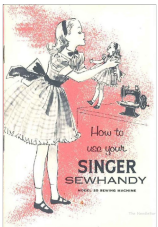
[Singer Automatic Model 306 Swing-Needle Sewing Machine Instructions](#)

Official instructions for the Singer Automatic Swing-Needle Sewing Machine, Model 306. Learn about its features, stitch designs, settings, and threading for optimal home sewing.



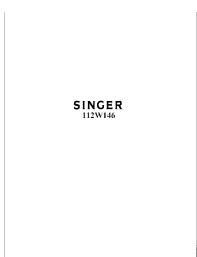
[Singer Start Sewing Machine Instruction Manual](#)

A comprehensive guide to operating and maintaining your Singer Start sewing machine. This manual covers setup, threading, basic stitches, advanced techniques, troubleshooting, and safety instructions.



[How to Use Your Singer Sewhandy Model 20 Sewing Machine: A Comprehensive Guide](#)

Learn how to use your Singer Sewhandy Model 20 sewing machine with this comprehensive guide. Covers threading, sewing, stitch adjustments, maintenance, and various sewing techniques like shirring, quilting, tucking, and pleating.



[Singer 112W146 Sewing Machine Parts List and Instructions](#)

A comprehensive guide detailing parts and maintenance for the Singer 112W146 sewing machine, including oiling instructions and a complete parts catalog.