

Manuals+

[Q & A](#) | [Deep Search](#) | [Upload](#)

manuals.plus /

- › [Timex](#) /
- › [Timex T5G751 Data Recorder 2 User Manual](#)

Timex T5G751

Timex T5G751 Data Recorder 2 User Manual

Model: T5G751

INTRODUCTION

The Timex T5G751 Data Recorder 2 is a device designed to collect and store fitness data from compatible Timex sensors. It simultaneously records heart rate, speed, and distance data from the Timex Digital Heart Rate Sensor and Timex GPS 3D Sensor. Additionally, it can capture navigational data such as altitude, elevation, latitude, and longitude when used with the Timex GPS 3D Sensor. This data can then be transferred to a personal computer for analysis using the included Timex Trainer software.





Figure 1: Front view of the Timex T5G751 Data Recorder 2.

PACKAGE CONTENTS

Verify that all items are present in the package:

- Timex T5G751 Data Recorder 2 unit
- Timex Trainer software CD (or download instructions)
- USB cable for data transfer
- Lanyard with secure small clamp and belt clip

Note: Compatible Timex Digital Heart Rate Sensor and Timex GPS 3D Sensor are sold separately and are required for full functionality.

SETUP

1. Battery Installation/Life

The Timex T5G751 Data Recorder 2 is designed for extended use, offering up to a 2-year battery life. Specific instructions for battery replacement are typically found in a dedicated section or on the device itself. Ensure the device has sufficient

power before use.

2. Software Installation

1. Insert the Timex Trainer software CD into your computer's CD-ROM drive, or navigate to the official Timex support website to download the latest version of the software.
2. Follow the on-screen prompts to complete the installation. The software is compatible with Microsoft Windows 98SE, ME, 2000, and XP operating systems.
3. Once installed, launch the Timex Trainer application.

3. Connecting the Data Recorder to Your PC

Use the provided USB cable to connect the Timex T5G751 Data Recorder 2 to an available USB port on your computer. The software will typically detect the device automatically once connected.

OPERATING INSTRUCTIONS

1. Attaching the Data Recorder

The data recorder can be clipped onto clothing or slipped into a pocket using the included lanyard and belt clip. Ensure it is securely attached and positioned to maintain a reliable connection with your sensors.

2. Pairing with Sensors

The Timex T5G751 Data Recorder 2 automatically collects data from compatible Timex Digital Heart Rate Sensors and Timex GPS 3D Sensors when they are in range and active. Ensure your sensors are properly worn and activated according to their respective manuals.

3. Recording Data

The device is designed to begin recording when it detects active signals from paired sensors. A small, dim light on the unit indicates its recording status. Observe the flash pattern to confirm if it is recording heart rate only, GPS only, both, or neither. It is crucial to ensure the light indicates active recording before beginning your workout.

The recorder can store multiple workouts. It collects heart rate, speed, and distance data. When used with the Timex GPS 3D Sensor, it also records altitude, elevation, latitude, and longitude.

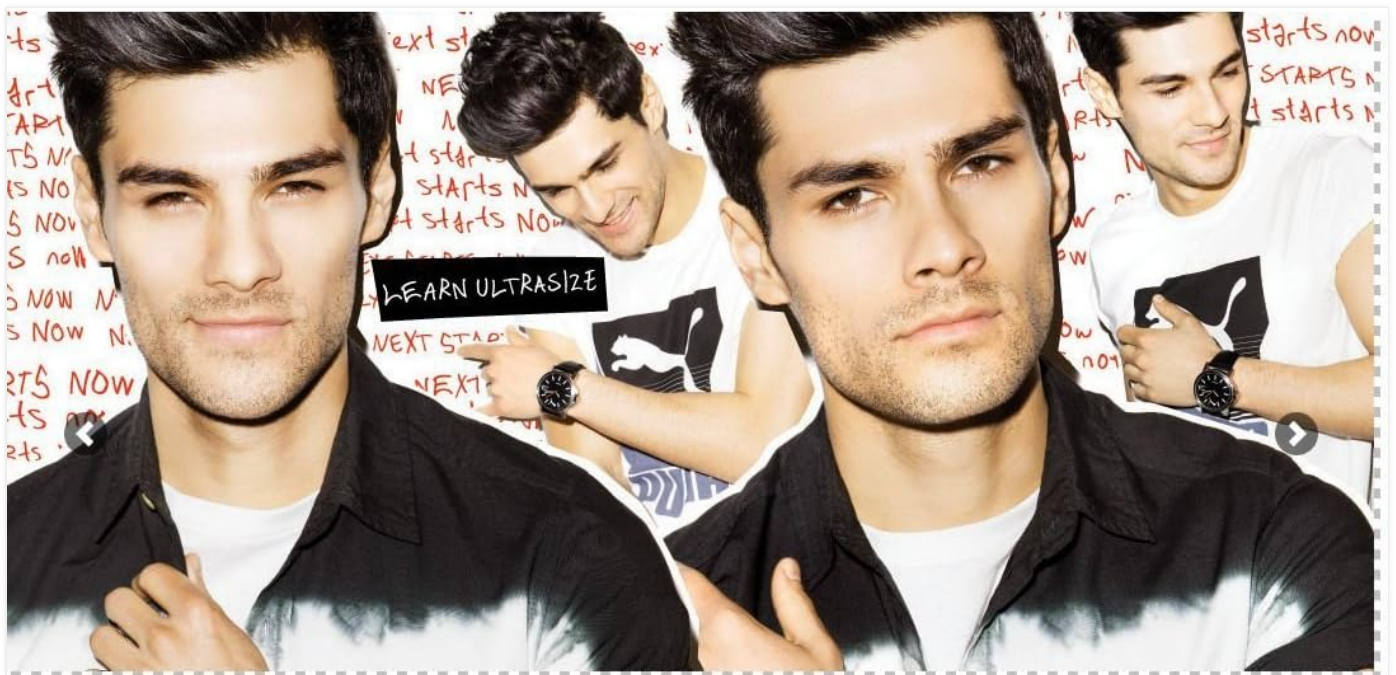


Figure 2: Side view of the Timex T5G751 Data Recorder 2, showing the clip mechanism.

4. Transferring Data to PC

1. After completing your workout, connect the data recorder to your PC using the USB cable.
2. Open the Timex Trainer software.
3. The software will automatically upload and log the workout data from the device.
4. Within the Timex Trainer software, you can view graphs, calculate summaries, and analyze your training progress.
The software also supports integration with web-based coaching and mapping services.

MAINTENANCE

Cleaning

Wipe the data recorder with a soft, damp cloth. Do not use abrasive cleaners or solvents. Ensure the USB port is clean and dry before connecting the cable.

Storage

Store the device in a cool, dry place away from direct sunlight and extreme temperatures.

Battery Care

While the device boasts a long battery life, if storing for extended periods, ensure the battery is not completely depleted. Refer to the full product manual for specific battery replacement instructions if needed.

TROUBLESHOOTING

Problem	Possible Cause	Solution
Data recorder not recording.	Sensors not active or out of range; low battery; incorrect recording mode indicated by light.	Ensure heart rate and GPS sensors are active and properly worn. Check the indicator light on the recorder for correct status. Replace battery if necessary.
Data not transferring to PC.	USB cable not properly connected; Timex Trainer software not running or outdated; driver issues.	Verify USB cable connection. Restart Timex Trainer software. Ensure your operating system drivers are up to date. Try a different USB port.
Inaccurate or missing data.	Sensor interference; sensor not properly positioned (e.g., moistening chest strap pads); recorder stopped mid-run.	Ensure sensor pads are moistened and chest strap is snug. Avoid strong electromagnetic interference. Monitor the recorder's indicator light during activity to confirm continuous recording.
Timex Trainer software issues (e.g., database corruption).	Software bug; system incompatibility; corrupted data file.	Ensure your operating system meets the software requirements (Windows 98SE, ME, 2000, XP). Check for software updates from Timex. Back up your data regularly. For severe corruption, reinstallation might be necessary.

SPECIFICATIONS

Model Number: T5G751

Dimensions: 3.5 x 2 x 1.3 inches

Weight: 4 ounces

Battery Life: Up to 2 years (estimated)

Data Collection: Heart rate, speed, distance, altitude, elevation, latitude, longitude (with compatible sensors)

Software Compatibility: Timex Trainer (Microsoft Windows 98SE, ME, 2000, XP)

Connectivity: USB

WARRANTY AND SUPPORT

For warranty information and technical support, please refer to the documentation included with your purchase or visit the official Timex website. Keep your proof of purchase for warranty claims.

You can visit the [Timex Store on Amazon](#) for additional product information and support resources.

