

## Dorman 600-200

# Dorman 600-200 4WD Actuator Instruction Manual

Brand: Dorman | Model: 600-200

## INTRODUCTION

This manual provides comprehensive instructions for the Dorman 600-200 4WD Actuator. This component is designed as a direct replacement for original equipment parts in specific vehicle applications, restoring proper four-wheel drive functionality. Adherence to these instructions will ensure correct installation and optimal performance.

## PRODUCT OVERVIEW

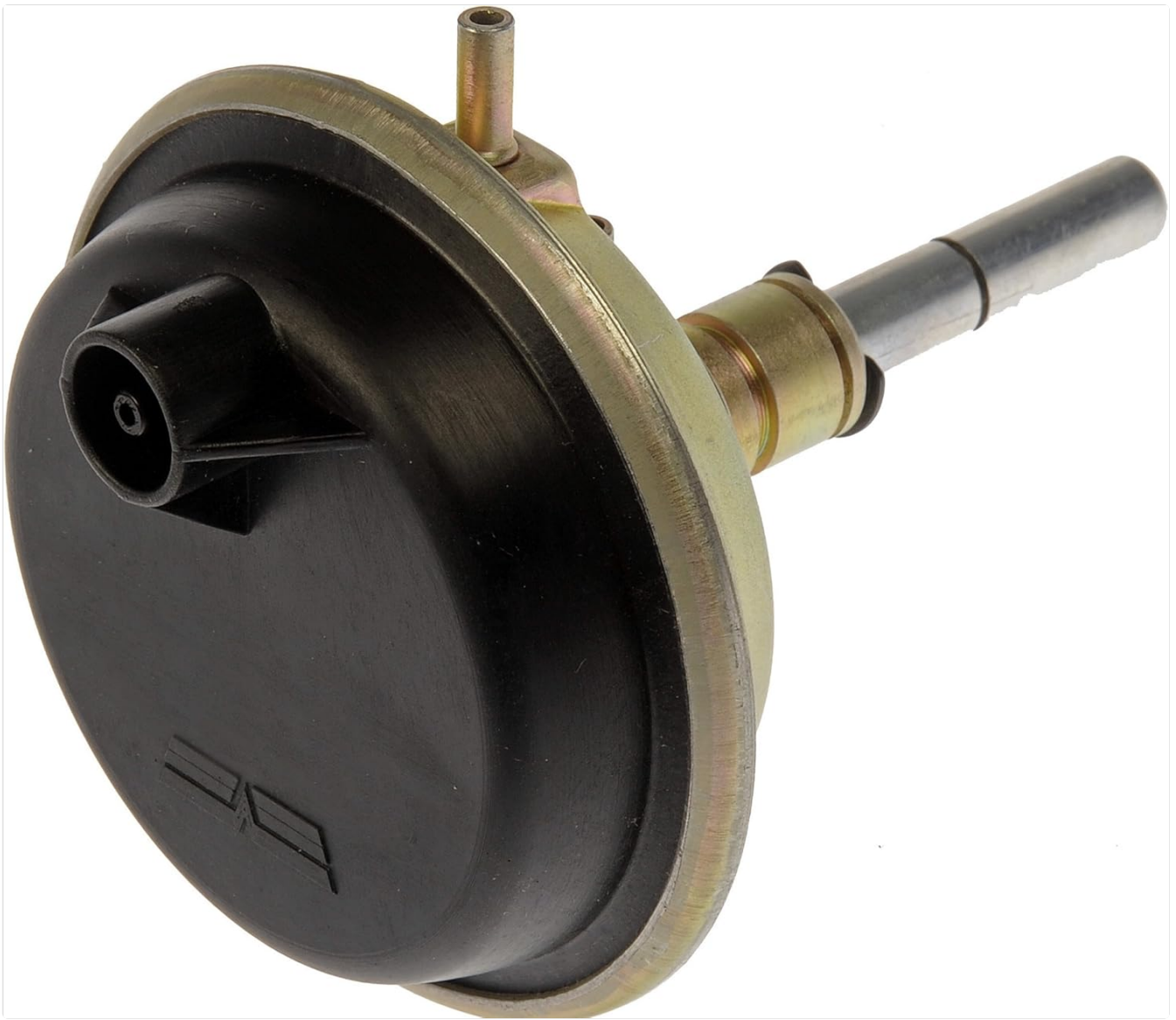
The Dorman 600-200 4WD Actuator is a critical component for engaging and disengaging the four-wheel drive system in compatible vehicles. It functions by engaging the front axle, allowing the vehicle to switch between two-wheel drive (2WD) and four-wheel drive (4WD) modes. This actuator is engineered to match the fit and function of the original part, ensuring reliable operation.



**Figure 1:** Front view of the Dorman 600-200 4WD Actuator, showing its main body and shaft.

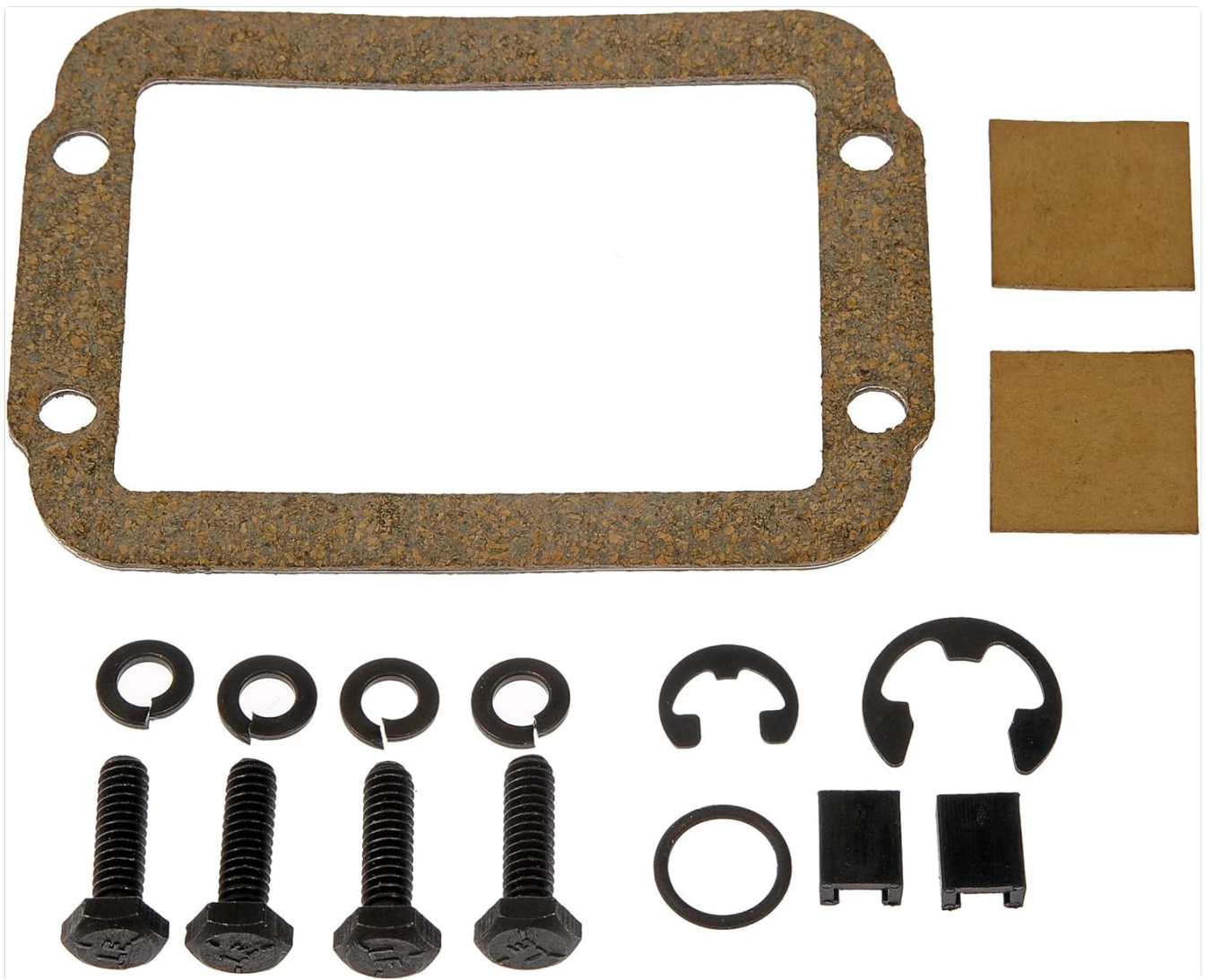


**Figure 2:** Top view of the Dorman 600-200 4WD Actuator, highlighting the vacuum ports.



**Figure 3:** Angled view of the Dorman 600-200 4WD Actuator, showing the overall shape and connection points.





**Figure 4:** Components included with the Dorman 600-200 4WD Actuator, such as a gasket, bolts, washers, and clips, for a complete installation.

## VEHICLE COMPATIBILITY

---

This 4WD actuator is compatible with the following Jeep models:

- **Jeep Cherokee:** 1984, 1985, 1986, 1987, 1988, 1989, 1990
- **Jeep Comanche:** 1986, 1987, 1988, 1989, 1990
- **Jeep Wagoneer:** 1984, 1985, 1986, 1987, 1988, 1989, 1990
- **Jeep Wrangler:** 1987, 1988, 1989, 1990

*Always verify fitment using your vehicle's specific year, make, and model.*

## INSTALLATION INSTRUCTIONS

---

The Dorman 600-200 4WD Actuator is designed for direct replacement. Due to the complexity and safety-critical nature of this component, professional installation is highly recommended. Always consult your vehicle's specific service manual for precise instructions and torque specifications.

### General Installation Steps (Refer to a service manual for detailed vehicle-specific instructions)

1. Safely raise the vehicle to access the lower section of the steering shaft.
2. Remove the bolt connecting the lower portion of the steering shaft to the steering rack or box.
3. Lower the vehicle.

4. Access the steering shaft by removing clips from the flap near the driver's side front tire.
5. Remove the two remaining bolts to free the steering shaft from its bracket.
6. Gently tap the top section of the steering shaft out of place with a hammer.
7. Raise the vehicle once more.
8. Gently pry the lower section out of place and fully remove the old steering shaft from the vehicle.
9. Reinstall the new steering shaft by following these steps in reverse order. Ensure all connections are secure and torqued to manufacturer specifications.

## Installation Video Reference

For a visual guide on a related Dorman steering component installation, please refer to the video below. While this video demonstrates a steering shaft installation (Dorman 425-291), the general principles of accessing and removing components in the vehicle's undercarriage may be similar. Always consult your vehicle's specific service manual for precise instructions for the 600-200 4WD Actuator.

This video demonstrates the installation process for a Dorman 425-291 Steering Shaft on a 2000 Jeep Wrangler. It covers raising the vehicle, removing bolts, accessing the shaft, and reinstalling the new component. Note that this video is for a steering shaft, not the 4WD actuator, but provides general procedural context for Dorman product installations.

## OPERATION

---

The Dorman 600-200 4WD Actuator is an integral part of your vehicle's four-wheel drive system. It functions by engaging or disengaging the front axle, allowing the vehicle to switch between two-wheel drive (2WD) and four-wheel drive (4WD) modes. When the 4WD system is selected, the actuator receives a signal (often vacuum-controlled) to move a fork that connects the front axle shafts, thereby transferring power to the front wheels.

Proper operation is indicated by the smooth engagement and disengagement of 4WD as selected by the driver. Refer to your vehicle's owner's manual for specific instructions on engaging and disengaging your 4WD system.

## MAINTENANCE

---

The Dorman 600-200 4WD Actuator is designed for long-term reliability and typically requires no specific routine maintenance. However, it is advisable to regularly inspect the surrounding components, including vacuum lines (if applicable) and electrical connections, for any signs of wear, damage, or corrosion. Ensure all connections are secure.

If operating in harsh conditions (e.g., extreme mud, water, or salt), more frequent visual inspections for debris or corrosion are recommended to prevent premature wear or failure.

## TROUBLESHOOTING COMMON ISSUES

---

If you experience issues with your vehicle's 4WD system, the actuator may be a contributing factor. Common symptoms of a failing 4WD actuator include:

- Inability to engage or disengage 4WD.
- 4WD warning light illuminated on the dashboard.
- Grinding noises from the front axle when attempting to engage 4WD.
- Vehicle remaining in 2WD or 4WD despite selection.

Before replacing the actuator, ensure that other components of the 4WD system, such as the transfer case, vacuum lines, electrical wiring, and switches, are functioning correctly. A diagnostic scan tool can help identify specific fault codes related to the 4WD system. If these checks do not resolve the issue, replacement of the actuator may be necessary.

## PRODUCT SPECIFICATIONS

---

Feature	Detail
Brand	Dorman
Model Number	600-200
Item Weight	10.4 ounces
Product Dimensions	4.06 x 3.9 x 4.8 inches
Manufacturer Part Number	600-200
OEM Part Numbers	A492425; FWD35; TCA-23; 8350 3113
What's in the Box	1x 4WD Vacuum Actuator

## WARRANTY AND TECHNICAL SUPPORT

---

Dorman Products offers a limited lifetime warranty on many of its parts, reflecting their commitment to quality and durability. For specific warranty details regarding the 600-200 4WD Actuator, please refer to the official Dorman website or contact their customer service.

If you have any questions about installation, troubleshooting, or product information, Dorman's technical support team is available to assist. You can visit the official [Dorman Store](#) for more products and information.

## Dorman 4WD Components Overview

This video highlights Dorman's range of 4WD replacement parts, emphasizing their engineering for durability and reliability. It showcases various components designed to meet or exceed original equipment standards for 4WD repairs.

## DORMAN QUALITY AND ENGINEERING

---

Dorman is committed to providing reliable, upgraded replacements for all your automotive repair needs. Their products are engineered to endure, often resolving common flaws found in original equipment. This commitment to quality ensures that Dorman parts perform reliably and safely.

## Engineering for Durability and Safety

This video provides an in-depth comparison of Dorman steering shafts against competitor products, focusing on material thickness, design for collision safety, corrosion resistance, and universal joint construction. It illustrates Dorman's engineering philosophy to ensure product reliability and safety, which extends to their 4WD components.