

## Pyle PDIW55

# Pyle PDIW55 5.25-inch In-Wall/In-Ceiling Stereo Speakers User Manual

Model: PDIW55

## 1. INTRODUCTION

The Pyle PDIW55 speaker system is designed to provide high-quality stereo sound for permanent installation in walls or ceilings. These 5.25-inch speakers offer a flush-mount design for a clean, integrated appearance, making them suitable for various home or office audio environments. This manual provides essential information for the safe installation, operation, and maintenance of your speakers.

## 2. SAFETY INSTRUCTIONS

Please read and understand all safety instructions before installing or operating these speakers. Retain this manual for future reference.

- **Power Disconnection:** Always ensure that all power to the audio system and installation area is disconnected before beginning any installation work.
- **Professional Installation:** If you are unsure about any aspect of the installation process, consult a qualified electrician or audio installer.
- **Wiring:** Use appropriate gauge speaker wire for your installation. Ensure correct polarity when connecting speakers to your amplifier/receiver.
- **Structural Integrity:** Verify that the wall or ceiling material can safely support the weight of the speakers. Avoid cutting into structural beams, electrical wiring, or plumbing.
- **Ventilation:** Ensure adequate air circulation around any connected audio equipment to prevent overheating.
- **Moisture:** Do not install speakers in areas exposed to excessive moisture or direct water contact. While the product is rated as waterproof, it is primarily intended for indoor use in high-humidity environments, not for outdoor exposure or submersion.
- **Cleaning:** Clean speakers only with a dry, soft cloth. Do not use liquid cleaners or aerosols.

## 3. PACKAGE CONTENTS

Carefully unpack your Pyle PDIW55 speakers and verify that all items listed below are present and undamaged. If any items are missing or damaged, contact your retailer.

- 2 x Pyle PDIW55 In-Wall/In-Ceiling Speakers
- 1 x Cut-Out Template for Installation
- 1 x Warranty Card
- Accessories (e.g., Grille removal tool)



Figure 3.1: Illustration of package contents, including two speakers, a cut-out template, and a grille removal tool. Key dimensions are also shown.

## 4. PRODUCT FEATURES

The Pyle PDIW55 speakers incorporate several design elements for optimal performance and ease of integration:

- **Two-Way Speaker System:** Features a 5.25-inch midbass speaker for rich low and mid-range frequencies, complemented by a 0.5-inch polymer dome tweeter for clear high frequencies.

- **High Power Handling:** Capable of handling up to 150 Watts peak power, ensuring robust audio output.
- **Flush Mount Design:** Engineered for seamless integration into walls or ceilings, providing a discreet and aesthetically pleasing audio solution.
- **Versatile Impedance:** Compatible with amplifiers offering 4-8 Ohm impedance outputs.
- **Easy Installation:** Includes a cut-out template to simplify the installation process.
- **Durable Construction:** Constructed with metal and plastic components, designed for longevity.
- **Waterproof Design:** Rated as waterproof, suitable for environments with higher humidity, though not intended for direct water exposure or outdoor use.



Figure 4.1: Close-up view of the speaker components, highlighting the 5.25-inch midbass speaker and the 0.5-inch polymer dome tweeter.

## 5. SETUP AND INSTALLATION

Follow these steps for proper installation of your Pyle PDIW55 speakers. Ensure all safety instructions are reviewed before proceeding.

### 5.1 Planning Your Installation

- **Location:** Choose a suitable location in your wall or ceiling, ensuring there are no obstructions such as electrical wiring, plumbing, or structural studs. Use a stud finder to verify.
- **Clearance:** Ensure sufficient depth behind the mounting surface for the speaker body (approximately 2.75 inches).
- **Wiring Path:** Plan the route for your speaker wires from your amplifier/receiver to each speaker location.



Figure 5.1: The Pyle PDIW55 speakers are designed for versatile installation in both in-ceiling and in-wall configurations.

## 5.2 Installation Steps

### 1. Prepare the Opening:

Use the provided cut-out template. Position the template at your desired speaker location and trace its outline onto the wall or ceiling surface. Carefully cut along the traced line using a drywall saw or other appropriate cutting tool. Ensure the cut is clean and precise.

### 2. Connect Speaker Wires:

Run your speaker wires through the wall/ceiling to the cutout opening. Strip approximately 1/2 inch of insulation from the ends of the speaker wires. Connect the positive (+) wire (usually red or marked) to the red terminal on the speaker and the negative (-) wire (usually black or unmarked) to the black terminal. The PDIW55 features spring-loaded quick-connect terminals for easy and secure wire



attachment.

### 3. Mount the Speaker:

Carefully insert the speaker assembly into the prepared opening. The mounting clamps on the speaker frame will automatically swing out. Using a screwdriver, tighten the screws located on the front baffle of the speaker. As you tighten, the clamps will rotate and firmly secure the speaker against the back of the wall or ceiling material. Do not overtighten.

### 4. Attach the Grille:

Once the speaker is securely mounted, align the magnetic grille with the speaker frame. The magnets will hold the grille firmly in place, providing a clean, flush finish.

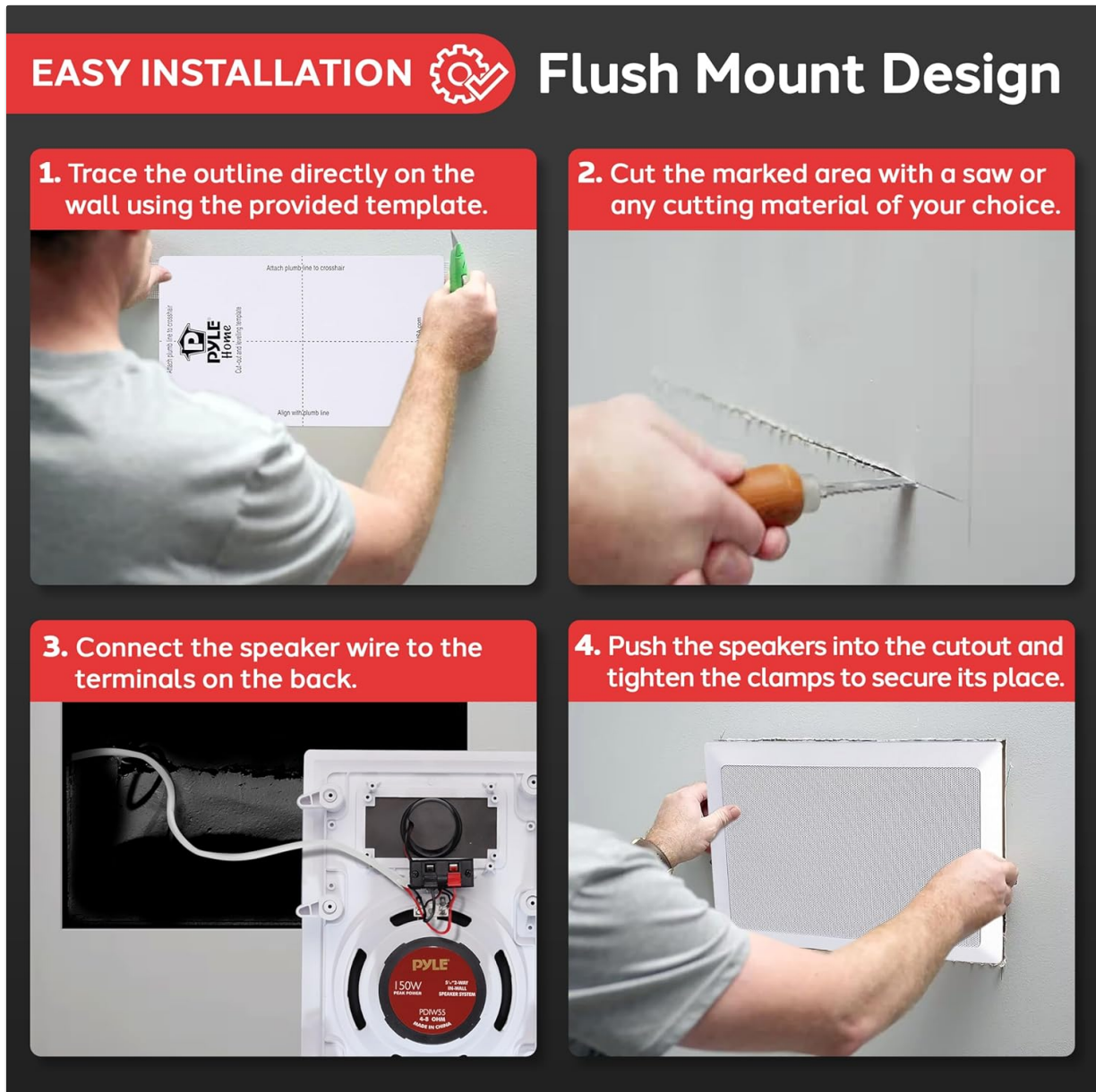


Figure 5.2: Visual guide illustrating the four main steps for installing the Pyle PDIW55 speakers: tracing, cutting, wiring, and securing.

## 6. OPERATING INSTRUCTIONS

After successful installation, follow these steps to begin using your Pyle PDIW55 speakers:

1. **Connect to Amplifier/Receiver:** Ensure your amplifier or receiver is powered off. Connect the other ends of the speaker wires to the corresponding speaker output terminals on your audio equipment, maintaining correct polarity (+ to + and - to -).

2. **Power On:** Turn on your amplifier/receiver. Select the appropriate audio input source.
3. **Adjust Volume:** Start with the volume at a low level and gradually increase it to your desired listening level.
4. **Audio Settings:** Adjust bass, treble, balance, and other audio settings on your amplifier/receiver to optimize sound quality for your listening environment.



Figure 6.1: The Pyle PDIW55 speakers with their grilles installed, ready for operation.

## 7. MAINTENANCE

The Pyle PDIW55 speakers require minimal maintenance to ensure long-lasting performance.

- **Cleaning:** Dust the speaker grilles and frames periodically with a soft, dry cloth. Do not use abrasive cleaners, solvents, or excessive moisture, as these can damage the finish or internal components.
- **Grille Removal:** If necessary to remove the grille for cleaning or inspection, use the provided grille removal tool (or a similar thin, flat object) to gently pry it off. Avoid bending the grille.
- **Inspection:** Periodically check speaker connections to ensure they remain secure.

## 8. TROUBLESHOOTING

If you encounter issues with your Pyle PDIW55 speakers, refer to the following common problems and solutions:

Problem	Possible Cause	Solution
No sound from speakers	<ul style="list-style-type: none"><li>◦ Amplifier/receiver not powered on or incorrect input selected.</li><li>◦ Loose or incorrect speaker wire connections.</li><li>◦ Faulty speaker wire.</li></ul>	<ul style="list-style-type: none"><li>◦ Ensure amplifier is on and correct input is selected.</li><li>◦ Check all speaker wire connections at both the speaker and amplifier, ensuring correct polarity.</li><li>◦ Test with a different speaker wire if available.</li></ul>
Distorted or unclear sound	<ul style="list-style-type: none"><li>◦ Volume too high, causing clipping.</li><li>◦ Loose speaker wire connections.</li><li>◦ Speaker impedance mismatch with amplifier.</li><li>◦ Damaged speaker.</li></ul>	<ul style="list-style-type: none"><li>◦ Reduce volume.</li><li>◦ Verify all speaker wire connections are secure.</li><li>◦ Ensure your amplifier is compatible with 4-8 Ohm speakers.</li><li>◦ If distortion persists at low volumes and connections are secure, the speaker may be damaged.</li></ul>
One speaker not working	<ul style="list-style-type: none"><li>◦ Loose connection to that specific speaker.</li><li>◦ Balance setting on amplifier.</li><li>◦ Damaged speaker or wire.</li></ul>	<ul style="list-style-type: none"><li>◦ Check connections for the non-working speaker at both ends.</li><li>◦ Adjust the balance control on your amplifier.</li><li>◦ Swap speaker wires at the amplifier to determine if the issue is with the speaker or the amplifier channel/wire.</li></ul>

## 9. SPECIFICATIONS

Detailed technical specifications for the Pyle PDIW55 speakers:

Model:	PDIW55
Speaker Type:	2-Way In-Wall / In-Ceiling Stereo Speakers
Woofer Size:	5.25 inches
Tweeter Size:	0.5 inches Polymer Dome
Peak Power Output:	150 Watts
Impedance:	4-8 Ohms
Product Dimensions (D x W x H):	2.75" x 7.62" x 11.25"
Cut-Out Dimensions (W x H):	6 5/8" x 10 1/8"
Mounting Depth:	2 3/4" (2.75")
Item Weight:	Approx. 5.06 lbs (per speaker)

<b>Material:</b>	Metal, Plastic
<b>Color:</b>	White
<b>Waterproof:</b>	Yes (suitable for high-humidity environments, not direct water exposure)



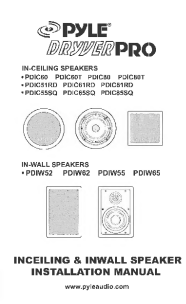

## 10. WARRANTY AND SUPPORT

Your Pyle PDIW55 speakers come with a limited warranty. Please refer to the included Warranty Card for specific terms, conditions, and registration information.

For technical support or warranty inquiries, please contact Pyle customer service. Contact information can typically be found on the Pyle website or on your warranty card.

**Online Resources:** For additional product information, FAQs, and support, visit the official Pyle website.

### Related Documents - PDIW55

	<p><a href="#">Pyle Bluetooth Ceiling/Wall Speakers User Guide &amp; Installation</a></p> <p>Comprehensive user guide for Pyle Bluetooth Ceiling/Wall Speakers (PDICBT series). Includes technical specifications, installation instructions, and Bluetooth wiring diagrams for models PDICBT552RD, PDICBT652RD, PDICBT852RD, PDICBT256, PDICBT266, PDICBT286, PDICBT2106.</p>
	<p><a href="#">Pyle PDWR58AB/PDWR58AW 5.25" Pro Active Wall Mountable Speakers User Guide</a></p> <p>Comprehensive user guide for Pyle PDWR58AB and PDWR58AW 5.25-inch Pro Active Wall Mountable Speakers, detailing features, technical specifications, installation, and safety instructions.</p>
	<p><a href="#">Pyle Dryver Pro In-Ceiling &amp; In-Wall Speaker Installation Manual</a></p> <p>Comprehensive installation manual for Pyle Dryver Pro in-ceiling and in-wall speakers. Covers product inclusion, optimal speaker placement for front, rear, and in-ceiling setups, detailed connection tips, step-by-step installation guides for existing construction, wiring diagrams, necessary tools, troubleshooting common issues, and technical specifications including dimensions.</p>
	<p><a href="#">Pyle In-Wall/In-Ceiling Universal Mountable Aluminum Alloy-Framed Speaker Systems Installation Manual</a></p> <p>Installation manual for Pyle's in-wall and in-ceiling universal mountable aluminum alloy-framed speaker systems, covering models with and without LED lights and Bluetooth connectivity.</p>





[Pyle PLMR80W-PLMR80B Dual 8-Inch Waterproof Marine Speakers User Guide](#)

Comprehensive user guide for Pyle PLMR80W-PLMR80B Dual 8-inch waterproof marine speakers, detailing features, specifications, and installation instructions for marine, automotive, and off-road use.



[Pyle PBKSR40WT Desktop Wireless BT Bookshelf Speakers User Guide](#)

User guide for the Pyle PBKSR40WT Desktop Wireless BT Bookshelf Speakers, detailing setup, connections, troubleshooting, and technical specifications for optimal audio performance.