

Walker 15828

Walker Ultra EPA 15828 Direct Fit Catalytic Converter Instruction Manual

For Ford Ranger and Mazda B2300 Vehicles

1. INTRODUCTION

This manual provides essential information for the proper installation, operation, and maintenance of your Walker Ultra EPA 15828 Direct Fit Catalytic Converter. This component is designed to meet EPA standards for OBDII vehicles, ensuring your exhaust system complies with legal emissions limits. It features a robust stainless-steel body for durability and consistent performance.



Figure 1: The Walker Ultra EPA 15828 Direct Fit Catalytic Converter. This image displays the complete catalytic converter assembly, including the inlet and outlet pipes with flanges, and the main converter body.

2. COMPATIBILITY

The Walker Ultra EPA 15828 Catalytic Converter is specifically designed for direct-fit replacement in the following vehicles:

- **1995-1997 Ford Ranger**
- **1995-1997 Mazda B2300**

Before installation, verify compatibility using your vehicle's year, make, model, engine, and trim information. Consult your vehicle's service manual for specific exhaust system configurations.

3. KEY FEATURES

- **EPA Compliant:** Designed for use on pre-OBDII vehicles (1995 and older) to meet federal emissions standards. Consult local regulations for specific state requirements.
- **Direct-Fit Design:** Engineered for a bolt-on replacement, featuring OE-style hangers, brackets, routings, and heat shields. This design simplifies installation, eliminating the need for specialized

fabrication or welding.

- **Assured Performance:** Utilizes OE-style high-technology washcoat and optimal precious metal loading to achieve the necessary reduction in tailpipe emissions for the specified vehicle applications.
- **Durable Construction:** Features thick OE-style flanges, hangers, and brackets for enhanced strength and longevity. Aluminized heat shields, where originally equipped, protect the vehicle's undercarriage from heat generated by the converter.
- **No Break-In Required:** Ready for immediate operation upon installation due to application-specific converter shell design and mat compression.

NO BREAK-IN REQUIRED

Ready to operate with application-specific
converter shell design and mat compression

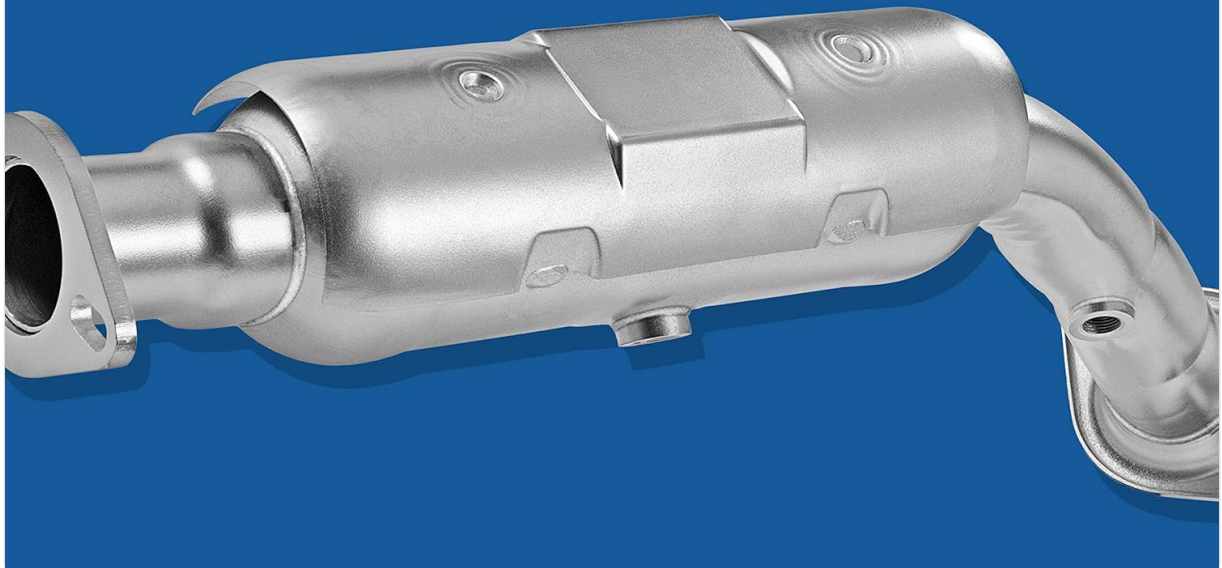


Figure 2: Illustration indicating that no break-in period is required for the catalytic converter. The image shows a close-up of the converter body with text emphasizing immediate operational readiness.

4. INSTALLATION INSTRUCTIONS

Installation of a catalytic converter requires specialized tools and automotive knowledge. It is highly recommended that this component be installed by a qualified automotive technician.

4.1 Pre-Installation Checks

- Ensure the vehicle's exhaust system is cool before beginning work.
- Inspect the new catalytic converter for any shipping damage.

- Confirm all necessary gaskets, bolts, and spring kits are available. These are typically not included with the converter and must be purchased separately.

4.2 Removal of Old Converter

1. Safely lift and support the vehicle.
2. Locate the existing catalytic converter.
3. Disconnect any oxygen sensors attached to the converter or adjacent pipes.
4. Unbolt the flanges connecting the converter to the exhaust manifold and the rest of the exhaust system.
5. Carefully remove the old converter assembly.

4.3 New Converter Installation

1. Clean all mating surfaces on the exhaust manifold and connecting pipes.
2. Install new gaskets at all connection points.
3. Position the new Walker Ultra EPA 15828 converter into place, aligning the bolt holes.
4. Secure the converter using new bolts, nuts, and spring kits. Tighten fasteners to manufacturer specifications.
5. Reconnect any oxygen sensors, ensuring proper torque and electrical connections.
6. Verify all connections are secure and free of leaks.
7. Lower the vehicle.



TESTED FOR ASSURED FIT

Vehicle-designed and tested for precision fit and finish

Figure 3: A mechanic working underneath a vehicle, installing an exhaust component. This illustrates the professional installation process for the direct-fit catalytic converter, emphasizing the need for proper tools and expertise.



Figure 4: A close-up view of the robust flanges on the catalytic converter. These flanges are designed for a secure, leak-free connection to the vehicle's exhaust system.

5. OPERATION AND EMISSIONS COMPLIANCE

The catalytic converter is a critical component of your vehicle's exhaust system, responsible for reducing

harmful pollutants from engine emissions. It converts toxic gases and pollutants in exhaust gas into less toxic pollutants by catalyzing redox reactions.

This Walker Ultra EPA 15828 converter is designed to maintain optimal exhaust efficiency and ensure your vehicle meets EPA emissions standards for its applicable model years. Proper installation and a well-maintained engine are crucial for the converter's effective operation.

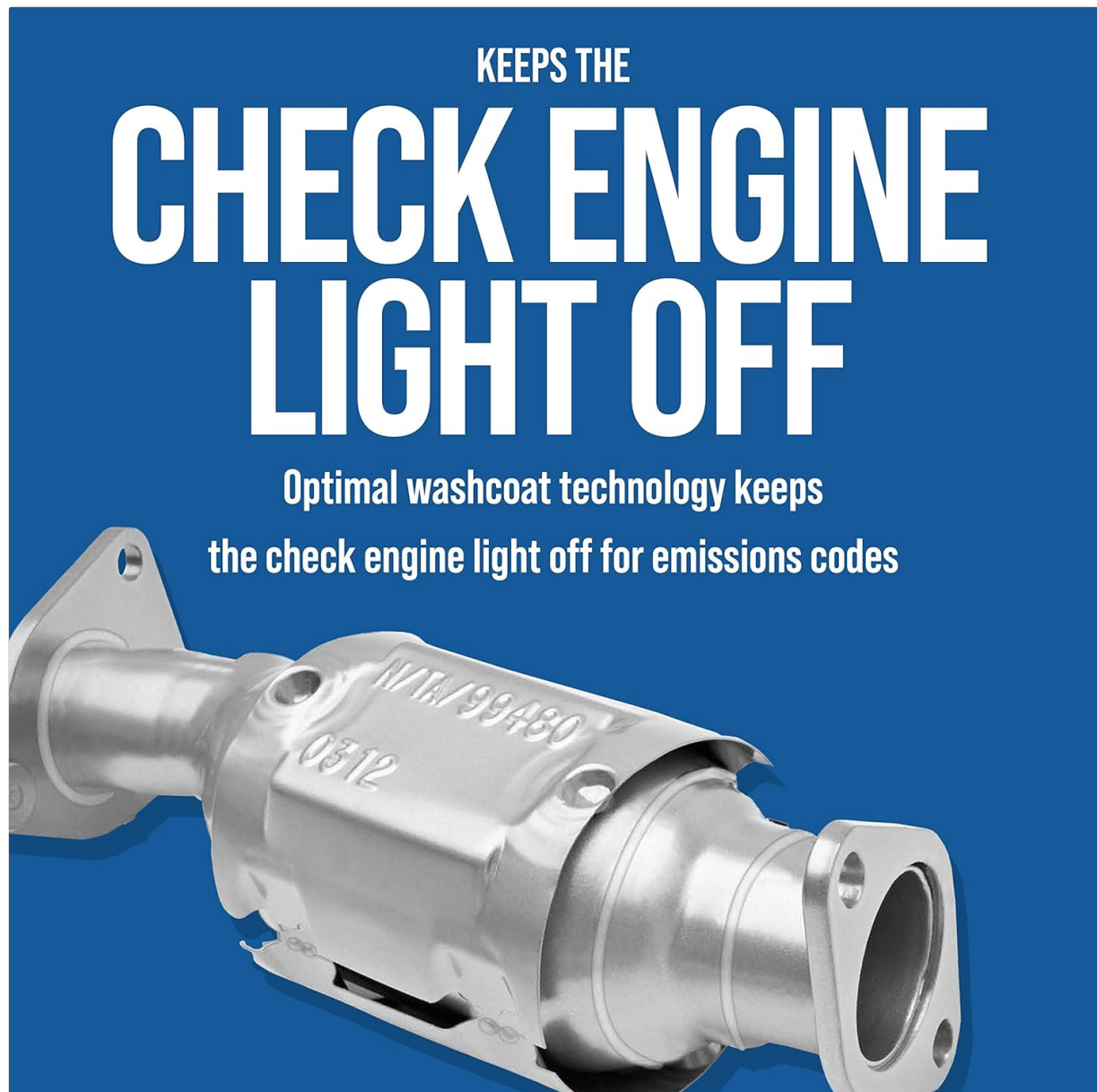


Figure 5: Image highlighting the catalytic converter's role in preventing the illumination of the check engine light. The text indicates that optimal washcoat technology helps manage emissions codes.

6. MAINTENANCE

Catalytic converters generally require no routine maintenance. However, the longevity and efficiency of the converter are directly linked to the overall health of your engine and exhaust system. Regular vehicle maintenance, including timely oil changes, spark plug replacement, and addressing engine misfires, will help prevent premature converter failure.

- Ensure your engine is running efficiently to prevent unburnt fuel from damaging the converter.
- Periodically inspect the exhaust system for leaks, corrosion, or damage.
- Address any engine warning lights promptly to prevent issues that could affect the catalytic converter.

7. TROUBLESHOOTING

If you experience issues after installing the catalytic converter, consider the following:

7.1 Check Engine Light (CEL)

If the Check Engine Light illuminates after installation, it may indicate an issue with the exhaust system or engine. Common causes related to catalytic converters include:

- **Oxygen Sensor Issues:** Faulty or improperly installed oxygen sensors can trigger a CEL. Ensure sensors are correctly connected and functioning.
- **Exhaust Leaks:** Leaks in the exhaust system, especially near oxygen sensors, can affect readings and trigger a CEL. Inspect all connections for tightness.
- **Engine Performance Issues:** Underlying engine problems (e.g., misfires, rich/lean fuel mixture) can cause the converter to operate inefficiently or become damaged, leading to a CEL. Address engine issues first.

It is recommended to have the vehicle diagnosed by a professional technician using an OBD-II scanner to retrieve diagnostic trouble codes (DTCs) for accurate troubleshooting.



Figure 6: A close-up of a vehicle dashboard showing the illuminated Check Engine Light. This light indicates a potential issue with the engine or emissions system that requires attention.

8. PRODUCT SPECIFICATIONS

Specification	Detail
Brand	Walker
Model Number	15828
Material	Metal
Item Weight	15.15 Pounds
Outside Diameter	2.5 Inches
Product Dimensions	48 x 10 x 8 inches
UPC	086387158282

9. REGULATORY INFORMATION

This catalytic converter is EPA compliant for use on pre-OBDI vehicles, specifically those manufactured in 1995 and older. It is designed to meet federal emissions requirements.

Important Note: Regulations regarding aftermarket catalytic converters vary by state. It is the installer's responsibility to consult local and state regulations to ensure compliance before purchase and installation. This product may not be legal for sale or use in California, Colorado, New York, or other states that require CARB-compliant replacement converters for certain vehicle years.



Figure 7: A graphic displaying the 'CARB Compliant' logo for Walker CalCat Converters. This image also provides text detailing the applicability for OBDII vehicles (1996 and newer) and non-OBD vehicles (1995 and older), and states where CARB compliance is required.

	CALCAT® DIRECT-FIT CONVERTER	CALCAT® UNIVERSAL CONVERTER	ULTRA® DIRECT-FIT CONVERTER	ULTRA® UNIVERSAL CONVERTER
DIRECT-FIT Bolt Off / Bolt On No Fabrication Or Welding Required No Break-In Required	✓		✓	
UNIVERSAL Customizable installation No break-in required		✓		✓
CARB-COMPLIANT Legal for use in California Legal for use in Colorado Legal for use in Maine, vehicles 2001 and newer Legal for use in NY, vehicles 1993, 1994 or 1996 and newer	✓	✓		
EPA-COMPLIANT Legal for use in all other states Legal for use in Maine, vehicles 2000 and older Legal for use in NY, vehicles 1995, 1992 and older			✓	✓

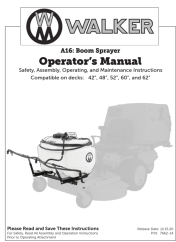



Figure 8: A comparison table outlining different types of catalytic converters (CalCat Direct-Fit, Universal, Ultra Direct-Fit, Ultra Universal) and their compliance status (CARB-compliant, EPA-compliant) and installation characteristics (Direct-Fit, Universal).

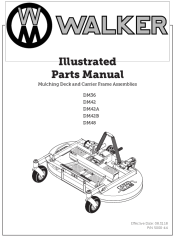
10. SUPPORT AND WARRANTY

For technical assistance, product inquiries, or warranty information, please contact Walker customer support directly. Keep your purchase receipt and product model number (15828) readily available when contacting support.

Specific warranty terms and conditions are provided by the manufacturer at the time of purchase. Review your product documentation for details.

Related Documents - 15828

	<p>Walker A16 Boom Sprayer Operator's Manual: Safety, Assembly, Operation, Maintenance</p> <p>Comprehensive operator's manual for the Walker A16 Boom Sprayer, covering safety instructions, assembly procedures, operating guidelines, maintenance tips, troubleshooting, and parts lists. Compatible with various Walker mower decks.</p>
	<p>Walker Rider Lawnmower Owner's Manual MS36-42 MC36-54</p> <p>Owner's manual for Walker Rider Lawnmower models MS36-42 (11-HP) and MC36-54 (16-HP), detailing assembly, safety, operation, and maintenance. Includes specifications and troubleshooting.</p>
	<p>WALKER WP4K5021 Colour Television Operating Instructions</p> <p>Comprehensive operating instructions for the WALKER WP4K5021 Colour Television, covering setup, features, operation, connectivity, and troubleshooting.</p>
	<p>Walker C19 Illustrated Parts Manual</p> <p>Detailed illustrated parts manual for the Walker C19 riding mower, providing comprehensive lists and diagrams for all components, including chassis, engine, drive systems, and accessories. Essential for maintenance and repair.</p>



[Walker Illustrated Parts Manual for DM36, DM42, DM42A, DM42B, DM48 Mulching Decks and Carrier Frames](#)

This illustrated parts manual provides detailed information for Walker DM36, DM42, DM42A, DM42B, and DM48 mulching decks and carrier frame assemblies. It includes part numbers, descriptions, diagrams, and assembly instructions to help identify and order replacement components for Walker lawn mowers.



[Walker T23 Illustrated Parts Manual](#)

Comprehensive illustrated parts manual for the Walker T23 commercial rider mower. Includes detailed diagrams, part numbers, and assembly information for maintenance and repair of all major components, including the Rehlko/Kohler engine.