

## Manuals+

[Q & A](#) | [Deep Search](#) | [Upload](#)

manuals.plus /

- › [MOOG](#) /
- › [MOOG K6439 Suspension Stabilizer Bar Bushing Kit Instruction Manual](#)

## MOOG K6439

# MOOG K6439 Suspension Stabilizer Bar Bushing Kit

Model: K6439 | Brand: MOOG

## INTRODUCTION

Thank you for choosing the MOOG K6439 Suspension Stabilizer Bar Bushing Kit. This manual provides important information regarding the product's features, installation considerations, maintenance, and specifications. Please read this manual thoroughly before installation and use to ensure proper function and longevity of the component. This kit is designed to replace worn or damaged stabilizer bar bushings, contributing to improved vehicle handling and stability.

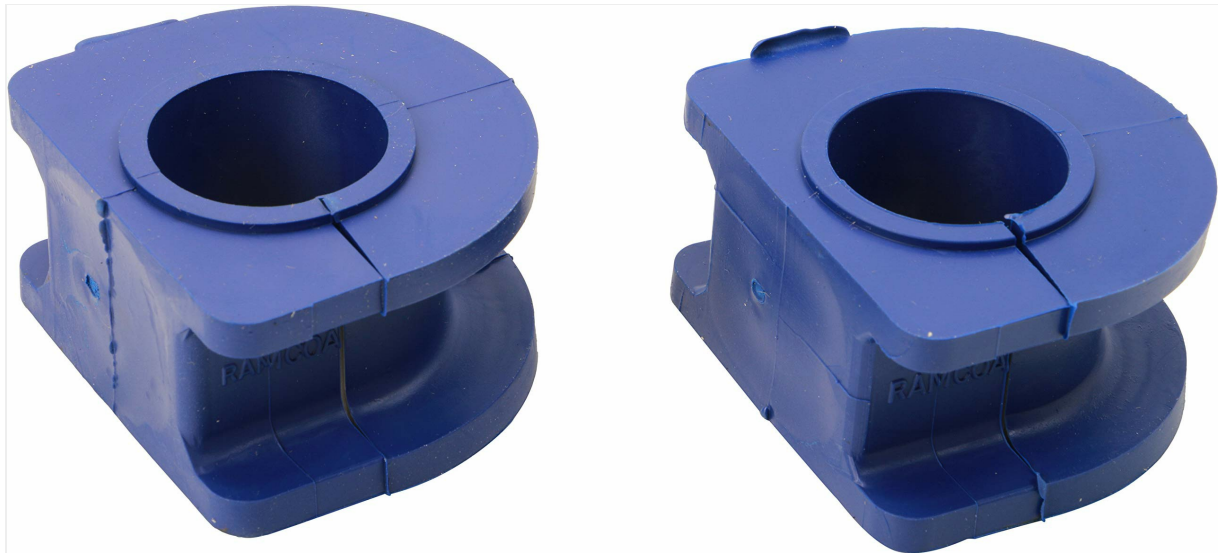


Image: Two MOOG K6439 Suspension Stabilizer Bar Bushings, showing their design and material.

## PRODUCT FEATURES

The MOOG K6439 Suspension Stabilizer Bar Bushing Kit is engineered with specific features to ensure reliable performance and durability:

- **Premium Materials:** Constructed from high-quality thermoplastic material, these bushings offer enhanced durability and contribute to optimal ride performance.

# PREMIUM MATERIALS

Made from high-quality natural rubber material for durability and ride performance.



Image: Two black MOOG bushings, illustrating the premium material construction.

- **Extended Service Life:** Designed to be less prone to splitting, discoloring, or cracking over time, ensuring a longer operational life compared to standard components.

# EXTENDED SERVICE LIFE

Less prone to splitting, discoloring or cracking with age  
for long life



Image: Two black MOOG bushings, highlighting their design for extended service life.

- **Highly Precise Engineering:** Optimized for quiet operation and designed to resist wear, salt, road grime, and oils, maintaining performance in various environmental conditions.

# HIGHLY PRECISE ENGINEERING

Optimized for quiet operation and resistance to wear,  
salt, road grime and oils



Image: Two black MOOG bushings with a magnified inset, demonstrating precise engineering.

- **Rigorous Trials:** Undergoes comprehensive evaluation during design and development by MOOG engineers to ensure consistent quality and performance.

# RIGOROUS TESTING

Comprehensive testing throughout design and development processes by MOOG engineers for quality you can count on



Image: An industrial testing environment, representing the rigorous trials MOOG products undergo.

- **Comprehensive Coverage:** Available for a wide range of foreign and domestic vehicle applications.

## INSTALLATION

---

Installation of suspension components requires mechanical knowledge and specialized tools. It is highly recommended that the MOOG K6439 Suspension Stabilizer Bar Bushing Kit be installed by a qualified automotive professional.

### General Guidelines:

- **Safety First:** Always use appropriate safety equipment, including jack stands, wheel chocks, and eye protection. Ensure the vehicle is securely supported before beginning any work.
- **Vehicle Compatibility:** Verify that the MOOG K6439 kit is the correct part for your specific vehicle make, model, and year. It is crucial to measure your vehicle's sway bar diameter to confirm compatibility, as variations exist even within the same vehicle models.
- **Refer to Service Manual:** Consult your vehicle's factory service manual for detailed, vehicle-specific installation procedures, torque specifications, and any special tools required.
- **Component Inspection:** Inspect surrounding suspension components (e.g., end links, sway bar, control arms) for wear or damage and replace as necessary to ensure optimal performance and safety.
- **Lubrication:** Apply appropriate grease to the inner surface of the bushings and the sway bar to prevent squeaking and promote smooth operation, if recommended by the vehicle or bushing manufacturer.



## OPERATING PRINCIPLES

The stabilizer bar (also known as an anti-roll bar or sway bar) is a critical component of your vehicle's suspension system, designed to reduce body roll during cornering and over uneven surfaces. The MOOG K6439 bushings secure the stabilizer bar to the vehicle's frame or chassis, allowing it to pivot smoothly while minimizing unwanted movement.

Properly functioning stabilizer bar bushings ensure that the stabilizer bar can effectively transfer force between the wheels, maintaining tire contact with the road and improving overall vehicle stability and handling. Worn bushings can lead to excessive body roll, noise, and reduced control.

## MAINTENANCE

To ensure the continued performance and safety of your vehicle, periodic inspection of the MOOG K6439 Suspension Stabilizer Bar Bushings is recommended.

### Inspection Schedule:

- Inspect the bushings during routine vehicle maintenance, such as oil changes or tire rotations, typically every 5,000 to 10,000 miles or as recommended by your vehicle manufacturer.

### What to Look For:

- **Cracking or Splitting:** Examine the rubber or thermoplastic material for any signs of cracks, tears, or splits.
- **Deterioration:** Look for signs of material degradation, such as hardening, softening, or crumbling.
- **Discoloration:** Significant discoloration can indicate material breakdown due to heat or chemical exposure.
- **Loose Fit:** Check if the bushing appears loose around the stabilizer bar or within its mounting bracket.
- **Noise:** Listen for squeaking, clunking, or rattling noises coming from the suspension, especially over bumps or during turns, which can indicate worn bushings.

If any of these signs are observed, it is recommended to replace the bushings promptly to maintain vehicle safety and performance.

## TROUBLESHOOTING

If you experience issues with your vehicle's suspension after installing or while using the MOOG K6439 bushings, consider the following:

### Common Symptoms and Solutions:

Symptom	Possible Cause	Recommended Action
Squeaking or creaking noises from the front suspension	Insufficient lubrication of bushings, incorrect installation, or worn bushings.	Ensure proper lubrication during installation. Re-check installation for correct fitment. If bushings are old, inspect for wear and replace if necessary.
Clunking or rattling noises over bumps	Loose or severely worn bushings, or worn stabilizer bar end links.	Inspect bushings and end links for wear or damage. Tighten mounting hardware to specified torque. Replace any worn components.
Excessive body roll during turns	Severely worn or damaged stabilizer bar bushings, or other suspension components.	Inspect all stabilizer bar components, including bushings and end links. Check other suspension parts like shocks/struts and control arm bushings. Replace as needed.

Symptom	Possible Cause	Recommended Action
Loose or vague steering feel	Worn suspension components, including stabilizer bar bushings.	Perform a thorough inspection of the entire steering and suspension system. Address any worn components.

If troubleshooting steps do not resolve the issue, consult a certified automotive technician for diagnosis and repair.

## SPECIFICATIONS

Key specifications for the MOOG K6439 Suspension Stabilizer Bar Bushing Kit:

- **Model Number:** K6439
- **Manufacturer Part Number:** K6439
- **OEM Part Number:** K6439
- **Brand:** MOOG
- **Manufacturer:** MOOG Chassis Products
- **Item Weight:** Approximately 5.6 ounces
- **Product Dimensions:** Approximately 5.4 x 3.3 x 2.8 inches
- **Position:** Front
- **Material:** Thermoplastic (as per product description)

## WARRANTY AND SUPPORT

For specific warranty information, claims, or technical support regarding your MOOG K6439 Suspension Stabilizer Bar Bushing Kit, please refer to the official MOOG website or contact MOOG customer service directly. Keep your purchase receipt as proof of purchase.

MOOG is committed to providing quality automotive components and support to its customers.