

NDS 864G

NDS 5-Inch Pro Series Deep Profile Channel Drain Kit (Model 864G) Instruction Manual

Model: 864G

1. INTRODUCTION

This manual provides detailed instructions for the installation, operation, and maintenance of your NDS 5-Inch Pro Series Deep Profile Channel Drain Kit, Model 864G. This kit is designed to effectively manage moderate water flows from various hardscapes such as driveways, patios, walkways, and pool decks, directing excess surface water to drain pipes for proper release.

The NDS Pro Series Channel Drain offers a professional-grade solution that combines durability with ease of installation, suitable for both commercial and residential applications. Please read this manual thoroughly before beginning installation to ensure correct setup and optimal performance.

2. PRODUCT OVERVIEW

The NDS 5-Inch Pro Series Channel Drain Kit is engineered for efficient surface water drainage. Its deep profile design and robust construction ensure long-lasting performance. Key features include:

- **Durable Construction:** Made from high-density polyethylene (HDPE) and polypropylene (PP) for resilience.
- **Modular Design:** Interlocking sections allow for customizable lengths and configurations.
- **Multiple Outlet Options:** Provides versatile connection points for various pipe sizes.
- **Removable Grates:** Facilitates easy cleaning and maintenance.
- **High Flow Rate:** Capable of handling significant water volumes.
- **Load Capacity:** Rated for NDS Class B Loads (up to 175 psi) when properly installed, suitable for medium-duty pneumatic tire traffic. ADA compliant.

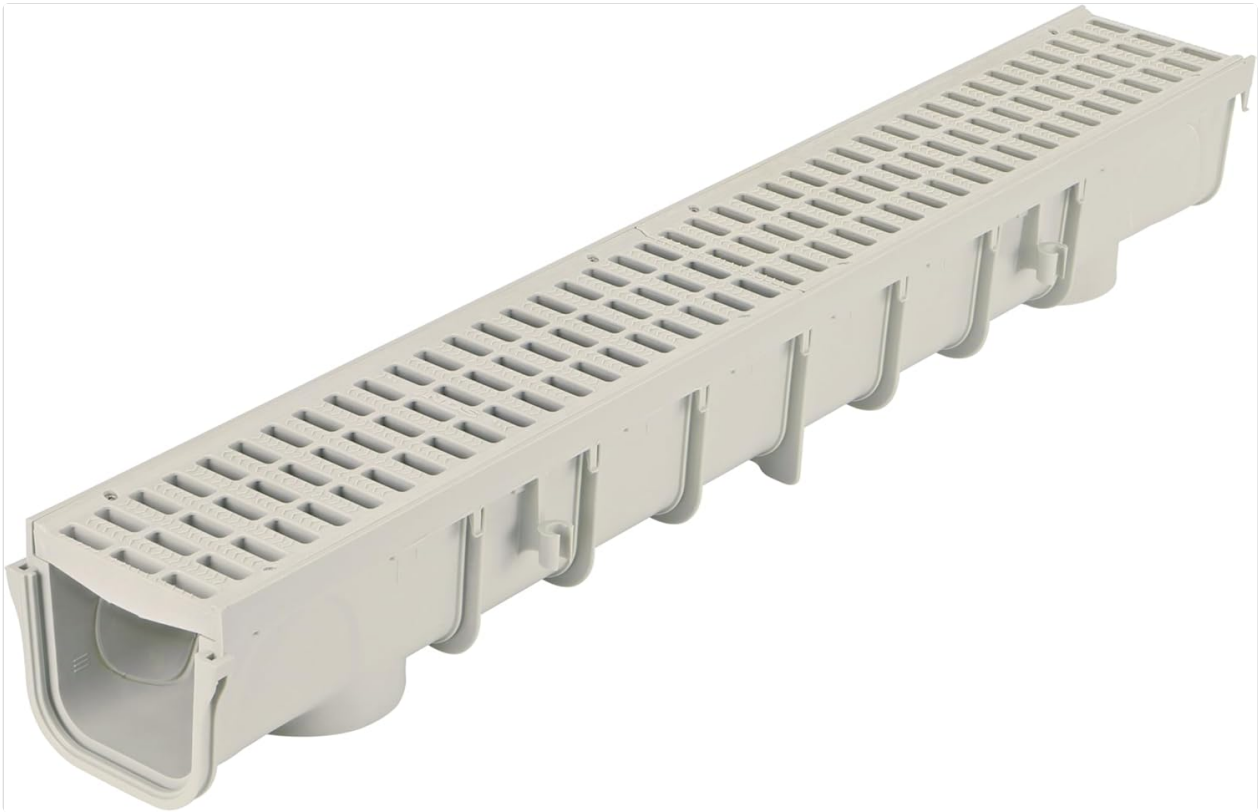


Figure 1: NDS 5-Inch Pro Series Channel Drain Kit components.

3. COMPONENTS

Each NDS 5-Inch Pro Series Channel Drain Kit includes the following:

- 4.75-inch deep polypropylene (PP) channel sections
- Polyethylene (HDPE) grates
- End cap with outlet
- Standard end cap



Figure 2: All components included in the NDS 5-Inch Pro Series Channel Drain Kit.

4. SETUP AND INSTALLATION

4.1. Connecting Channel Sections

The channel sections feature an interlocking design for easy assembly. Simply slide the tongue of one section into the groove of another. Channel-to-channel clips are integrated to reduce motion during installation, ensuring a secure connection.

How to Connect

5 in. Pro Series Channel™ Drains and Grates

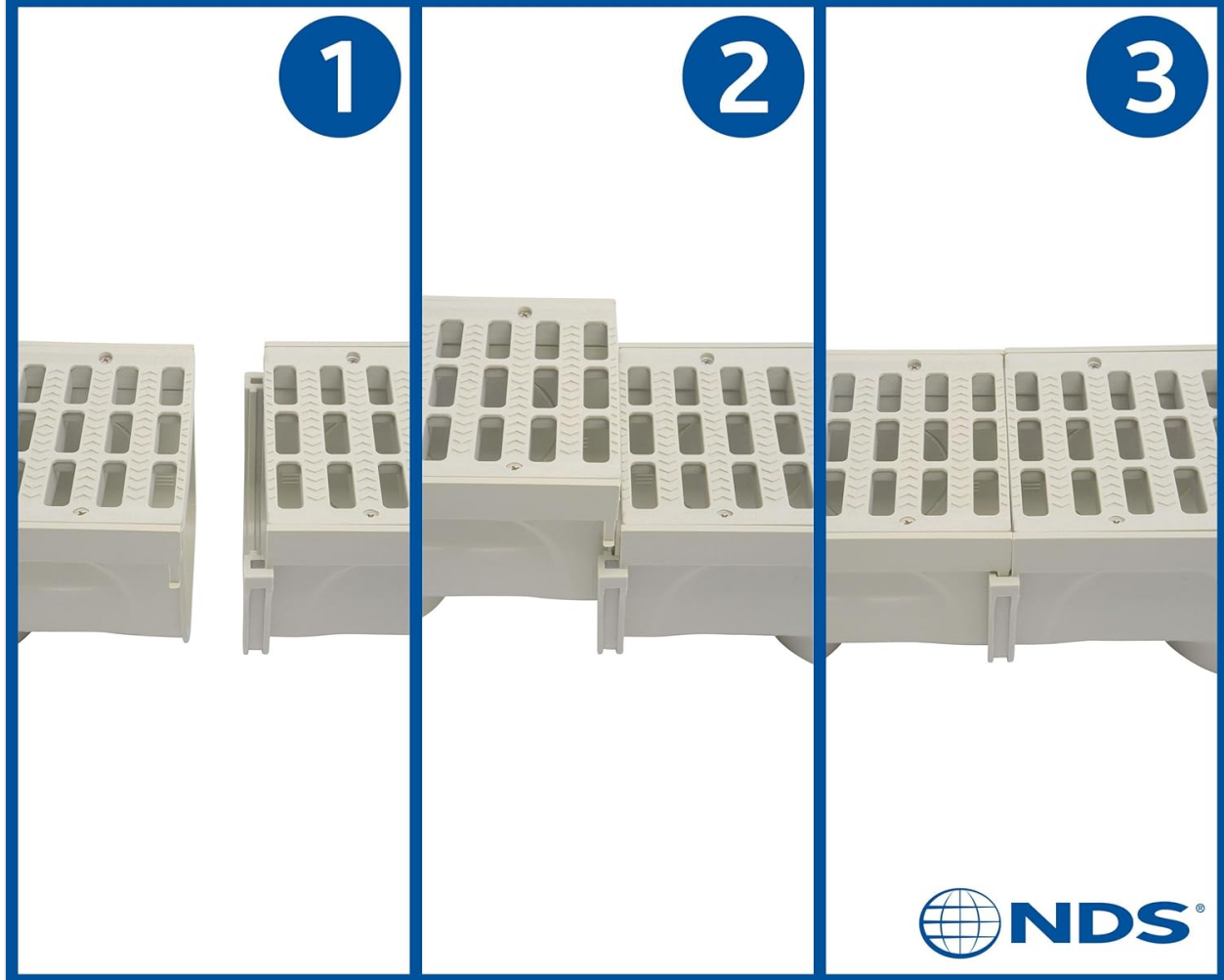


Figure 3: Visual guide for connecting channel drain sections.

4.2. Customizing Lengths

Channel sections can be cut to desired lengths, as short as 4 inches, using a saw. This modularity allows for precise fitting in various installation scenarios.

4.3. Outlet Options

Each channel section provides 8 outlet options for connecting to drainage pipes:

- **Bottom Outlets:** Connect to 3-inch and 4-inch Sewer & Drain (S&D) fittings.
- **Side Outlets:** Connect to 3-inch S&D pipe.
- **End Outlet:** Connects to 3-inch S&D pipe and 4-inch S&D fittings.

5 in. Pro Series Channel™ Drain

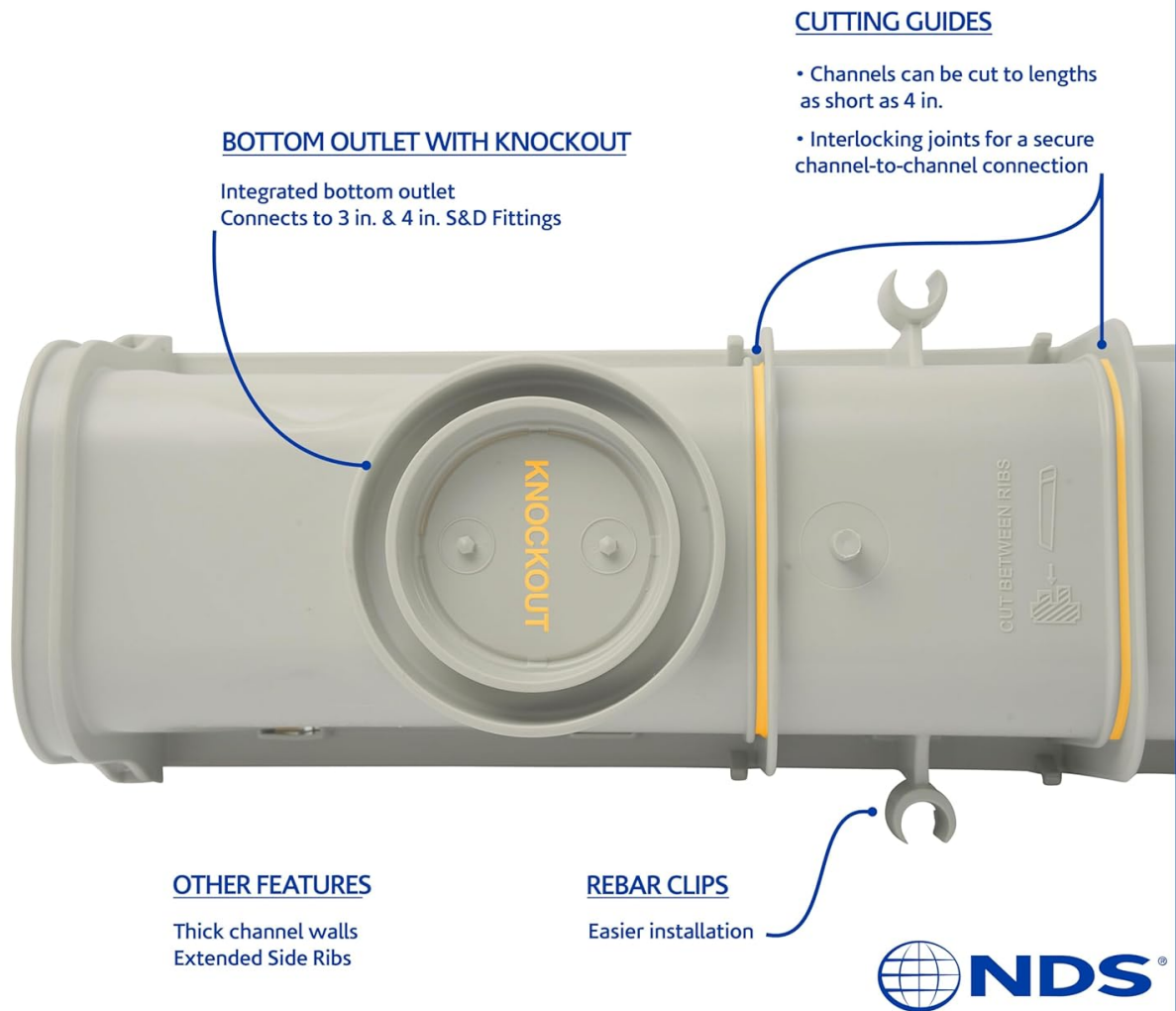


Figure 4: Details of bottom outlet and cutting guides.



Figure 5: End cap with integrated outlet for pipe connection.

4.4. Installation Video

For a visual guide on the NDS 5-Inch Pro Series Channel Drain, please watch the official product video below:

Video 1: NDS 864G 5-Inch Pro Series Channel Drain Overview. This video demonstrates the features and basic assembly of the NDS 5-inch Pro Series Channel Drain.

5. OPERATING THE DRAINAGE SYSTEM

Once installed, the NDS Channel Drain system operates passively, collecting surface water through its grates and channeling it through the deep profile channel. The water is then directed to the connected drain pipes and released downstream, preventing pooling and potential property damage.

6. MAINTENANCE

Regular maintenance ensures the longevity and efficiency of your channel drain system. The removable grates allow for easy access to the channel for cleaning. Periodically remove the grates and clear any accumulated debris, such as leaves, dirt, or sediment, to maintain optimal water flow.

To remove grates, use a screwdriver to unclip any securing mechanisms. After cleaning, ensure grates are securely re-installed.

7. TROUBLESHOOTING

If you experience issues with your NDS Channel Drain, consider the following:

- **Slow Drainage:** Check for blockages within the channel or connecting pipes. Remove grates and clear any debris.
- **Water Pooling Around Drain:** Ensure the surrounding hardscape has an adequate slope towards the drain. Verify that the drain outlets are not obstructed.
- **Loose Connections:** If sections appear to separate, ensure they are properly interlocked and secured. For watertight seals, clear waterproof silicone should be used at connection points, as PVC glue is not suitable for polypropylene.

8. SPECIFICATIONS

Attribute	Detail
Brand	NDS
Model Number	864G
Material	High Density Polyethylene (HDPE), Polypropylene (PP)
Product Dimensions	39.75"W x 5.5"H
Item Depth	4.75 Inches
Flow Rate	72 GPM per ft.
Open Surface Area	23.5 sq. in. per linear ft.
Load Rating	NDS Class B Loads (up to 175 psi)
ADA Compliant	Yes
Special Feature	Rust Resistant

9. WARRANTY AND SUPPORT

For warranty information or technical support, please refer to the official NDS website or contact NDS customer service directly. Ensure you have your product model number (864G) available for faster assistance.