

Andis 01557

Andis 01557 Professional Master Adjustable Blade Hair Trimmer Instruction Manual

1. PRODUCT OVERVIEW

The Andis 01557 Professional Master Adjustable Blade Hair Trimmer is designed for professional and home use, featuring durable carbon-steel blades and a high-torque magnetic motor for efficient cutting. Its robust construction ensures long-term reliability.

Key Features:

- **Professional Grade:** Used by professionals in salons and barber shops for its quality and performance.
- **High-Torque Magnetic Motor:** Delivers 14,000 cutting strokes per minute (spm) for powerful and quiet operation, suitable for both wet and dry hair.
- **Adjustable Carbon-Steel Blades:** Features durable blades adjustable from fine to coarse (size 000 – 1) for versatile cutting and fading.
- **Durable Construction:** Unbreakable aluminum housing designed to withstand professional use.
- **Convenient Operation:** Simple thumb-controlled on/off button for easy single-hand use.
- **Dimensions:** Measures 2 x 1.75 x 6 inches and weighs 1.25 pounds, with a heavy-duty 8-foot cord. Operates on 120V / 60 Hz.



Figure 1: Andis 01557 Professional Master Adjustable Blade Hair Trimmer.

This image displays the complete Andis 01557 Professional Master Hair Trimmer, highlighting its sleek silver and chrome design. The robust aluminum casing and adjustable blade lever are visible, emphasizing its professional-grade construction.

2. SAFETY INFORMATION

- **KEEP AWAY FROM WATER:** Do not use this appliance near bathtubs, showers, basins, or other vessels containing water.
- **BLADE CAUTION:** Exercise caution when handling blades as they are sharp. Keep fingers and other body parts away from moving blades.
- **Power Cord:** Ensure the power cord is not damaged or frayed. Do not use if the cord is compromised.
- **Ventilation:** Do not block air openings or operate where air openings may be blocked.
- **Children:** Keep out of reach of children. This appliance is not intended for use by persons (including children) with reduced physical, sensory, or mental capabilities, or lack of experience and knowledge, unless they have been given supervision or instruction concerning use of the appliance by a person responsible for their safety.

3. SETUP AND INITIAL USE

Unpacking:

- Carefully remove the trimmer and all accessories from the packaging.
- Inspect the trimmer for any signs of damage. Do not use if damaged.

Blade Adjustment:

The Andis Master features adjustable blades for varying cutting lengths. The lever on the side allows for quick adjustments from fine (size 000) to coarse (size 1). Move the lever up for a finer cut and down for a

coarser cut.



Figure 2: Blade Adjustment Mechanism.

This image provides a close-up view of the adjustable blade lever on the side of the Andis Master Trimmer. The lever allows users to easily change the cutting length from fine to coarse without needing to change attachment combs.

Power Connection:

This is a corded electric trimmer. Plug the heavy-duty 8-foot power cord into a standard 120V / 60 Hz electrical outlet.

4. OPERATING INSTRUCTIONS

Turning On/Off:

Use the thumb-controlled button on the side of the trimmer to switch the unit ON or OFF. The high-torque magnetic motor will activate, providing 14,000 cutting strokes per minute.

Hair Cutting Techniques:

- **General Cutting:** For overall hair removal, use the desired blade adjustment or attach appropriate guide combs (sold separately). Move the trimmer against the direction of hair growth for an even cut.
- **Fading and Tapering:** Utilize the adjustable blade lever to seamlessly blend different hair lengths. Start with a longer setting and gradually move to shorter settings for a smooth fade.
- **Beard and Body Grooming:** The carbon-steel blades are suitable for precise beard trimming and general body grooming, providing a smooth cut without pulling or snagging.



Figure 3: Trimmer in Use for Neckline.

This image shows a professional barber using the Andis Master Trimmer to refine the neckline of a client. The trimmer's compact design allows for precise control and clean lines, demonstrating its effectiveness in detailed grooming.

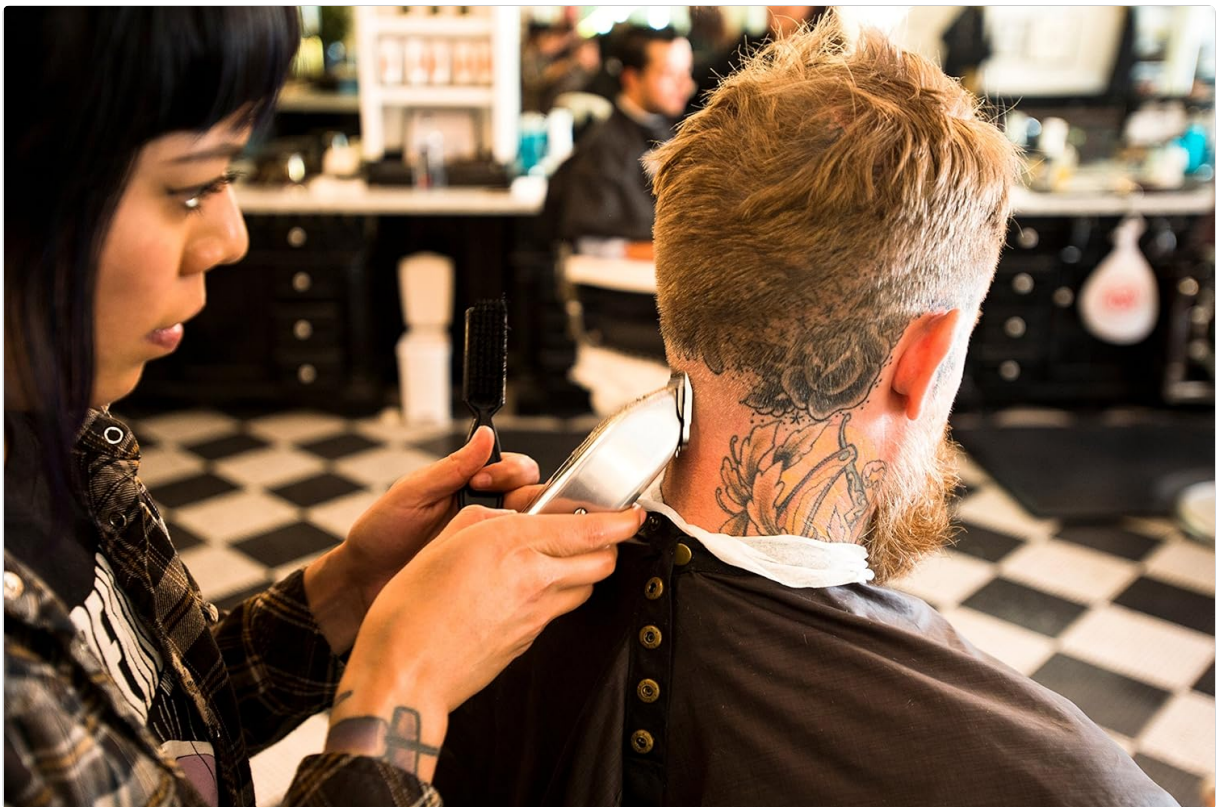


Figure 4: Trimmer in Use for Fading.

This image illustrates the Andis Master Trimmer being used to create a smooth fade on a client's hair. The barber's technique highlights the trimmer's ability to achieve gradual transitions in hair length, essential for professional-quality haircuts.

5. MAINTENANCE AND CARE

Blade Oiling:

To ensure optimal performance and longevity of your trimmer, apply a few drops of clipper oil to the blades before and after each use. This lubricates the blades, reduces friction, and prevents rust.



Figure 5: Oiling Clipper Blades.

This diagram illustrates the correct method for oiling the clipper blades. Drops of oil are applied to the top and sides of the blades to ensure smooth operation and prevent wear.

Cleaning:

- After each use, brush off any loose hair from the blades and housing.
- For thorough cleaning, use a clipper disinfectant spray (ensure it is safe for metal blades).
- Never immerse the trimmer in water.

Storage:

Store the trimmer in a cool, dry place, away from moisture and direct sunlight. Ensure the blades are clean and oiled before storing.

6. TROUBLESHOOTING

Problem	Possible Cause	Solution
Trimmer not turning on	No power supply; damaged cord.	Check power outlet and cord. Ensure the cord is securely plugged in. If the cord is damaged, discontinue use and contact customer service.
Blades pulling hair or cutting poorly	Blades are dull, dirty, or not properly oiled.	Clean and oil the blades. If the problem persists, blades may need sharpening or replacement.
Excessive noise or vibration	Loose blade screws; internal motor issue.	Check and tighten blade screws. If noise continues, contact customer service.
Trimmer gets hot during use	Prolonged use; insufficient lubrication.	Allow the trimmer to cool down. Ensure blades are properly oiled. For professional use, consider having a backup trimmer.

7. PRODUCT SPECIFICATIONS

- **Model Number:** 01557
- **Brand:** Andis

- **Power Source:** Corded Electric
- **Voltage:** 120V / 60 Hz
- **Motor Type:** High-Torque Magnetic Motor (14,000 SPM)
- **Blade Type:** Adjustable Carbon-Steel T-Blade (Sizes 000-1)
- **Housing Material:** Unbreakable Aluminum
- **Product Dimensions:** 2 x 1.75 x 6 inches
- **Item Weight:** 1.25 Pounds
- **Color:** Chrome
- **Recommended Uses:** Clipping, Grooming, Professional, Trimming
- **GTIN (UPC):** 040102015571

8. OFFICIAL PRODUCT VIDEOS

Andis 01557 Master Clipper Overview

Your browser does not support the video tag.

This video provides an official overview of the Andis 01557 Master Clipper, showcasing its features and design. It highlights the professional-grade construction and key functionalities of the trimmer.

9. WARRANTY AND SUPPORT

For product support, warranty information, or service inquiries, please contact Andis Customer Service.

- **Manufacturer:** Andis Co
- **Customer Service Phone:** 1-800-558-9441