

## Rosco R26S

# Rosco Roscolux Light Red, 20x24" Color Effects Lighting Filter User Manual

## 1. INTRODUCTION

This manual provides essential information for the proper use, setup, maintenance, and troubleshooting of your Rosco Roscolux Light Red, 20x24" Color Effects Lighting Filter. Please read this manual thoroughly to ensure optimal performance and longevity of your filter.

## 2. PRODUCT OVERVIEW

The Roscolux Light Red filter is designed to add a vibrant, dynamic red hue to lighting setups. It is engineered for durability and consistent color output, making it suitable for various professional applications.

### Key Features:

- **Enhanced Color Accuracy:** Ensures true color representation for professional results.
- **Superior Durability:** Crafted from robust materials to withstand high temperatures and prolonged use.
- **Optimized Light Transmission:** Provides exceptional light clarity with minimal light loss.
- **Excellent Heat Resistance:** Maintains color integrity and shape under intense heat.
- **Easy Customization:** 20x24" sheet size allows for effortless cutting and shaping.

### Product Image:

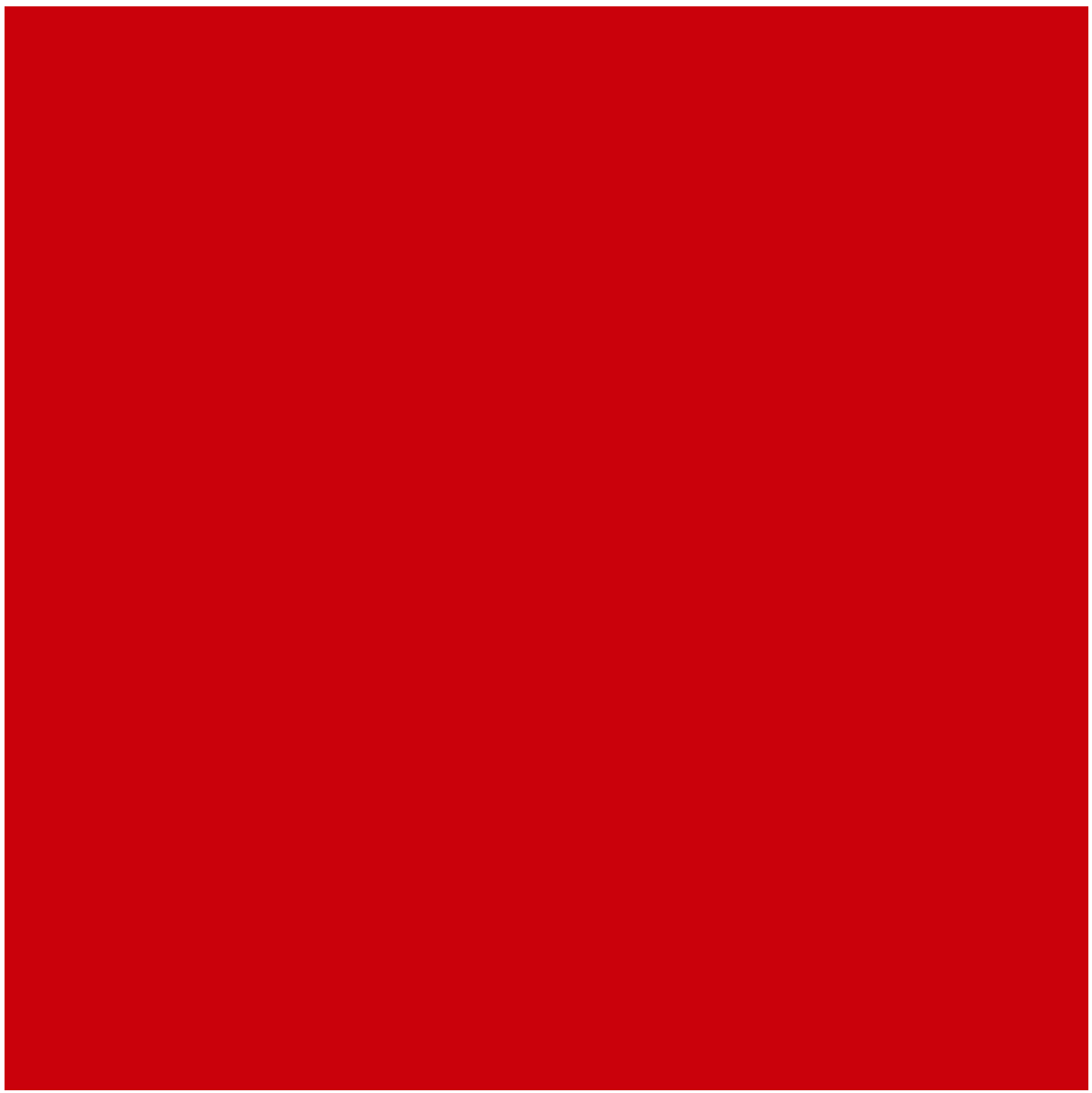


Image: A solid red sheet representing the Rosco Roscolux Light Red filter.

### 3. SETUP

---

The Roscolux Light Red filter is provided in a 20x24 inch sheet, allowing for flexible application.

#### Installation Steps:

1. **Measure and Cut:** Determine the required size for your lighting fixture. Use sharp scissors or a utility knife to cut the filter sheet to the desired dimensions.
2. **Placement:** Securely place the cut filter in the gel frame or accessory slot of your lighting instrument. Ensure it is positioned correctly to cover the light source.
3. **Heat Considerations:** While highly heat-resistant, ensure adequate ventilation around the lighting fixture. For extremely high-wattage or enclosed lights, monitor the filter during initial use. If excessive heat is a concern, consider using multiple layers or maintaining a greater distance from the light source if possible.

### 4. OPERATING

---

Once installed, the Roscolux Light Red filter will transform the output of your lighting instrument into a

vibrant red. Its consistent color properties ensure reliable performance.

### Usage Tips:

- **Color Intensity:** The filter provides a specific light red hue. For deeper or more saturated red, multiple layers of the filter may be used, though this will reduce light transmission.
- **Light Source Compatibility:** This filter is designed for use with various lighting instruments, including theatrical lights, studio lights, and LED fixtures.
- **Environmental Factors:** Avoid exposing the filter to direct sunlight for prolonged periods when not in use, as this can contribute to premature fading over many years.

## 5. MAINTENANCE

---

Proper care will extend the life and maintain the optical quality of your Roscolux filter.

### Cleaning:

- Gently wipe the filter with a soft, lint-free cloth.
- For stubborn smudges, a small amount of mild soap and water can be used, followed by a thorough drying with a clean, soft cloth.
- Avoid abrasive cleaners or solvents, as these can damage the filter's surface or color.

### Storage:

- Store unused filter sheets flat in a cool, dry place, away from direct sunlight and extreme temperatures.
- Keep filters in their original packaging or a protective sleeve to prevent scratches and dust accumulation.

## 6. TROUBLESHOOTING

---

If you encounter issues with your Roscolux Light Red filter, consider the following common scenarios:

### Common Issues and Solutions:

- **Color not as expected:**  
*Cause:* Incorrect light source, ambient light interference, or desire for deeper saturation.  
*Solution:* Ensure the light source is white or neutral. Minimize competing ambient light. For a more intense red, consider layering multiple sheets of the filter.
- **Filter melting or warping:**  
*Cause:* Excessive heat from the lighting instrument, insufficient distance, or poor ventilation.  
*Solution:* Verify the filter is placed at an appropriate distance from the lamp. Ensure the lighting fixture has proper ventilation. For very high-wattage lights, consider using a heat shield or doubling the filter layers to distribute heat, or explore alternative heat-resistant gels if issues persist.
- **Scratches or physical damage:**  
*Cause:* Improper handling or storage.  
*Solution:* Handle filters by the edges. Store them flat and protected from abrasive surfaces.

## 7. SPECIFICATIONS

---

Below are the technical specifications for the Rosco Roscolux Light Red, 20x24" Color Effects Lighting Filter (Model: R26S).

Specification	Value
Product Dimensions	24 x 0.09 x 20 inches (61 x 0.23 x 50.8 cm)
Item Weight	0.32 ounces (9.07 grams)
ASIN	B000B7A2OG
Item Model Number	R26S
Brand	Rosco
Material	Polyester, Plastic (Co-extruded polycarbonate plastic, deep dyed polyester)
Photo Filter Effect Type	Color Correcting / Color Effects
Coating Description	No Coating (Color sealed between clear layers)
Water Resistance Level	Not Water Resistant

## Technical Data Sheet:

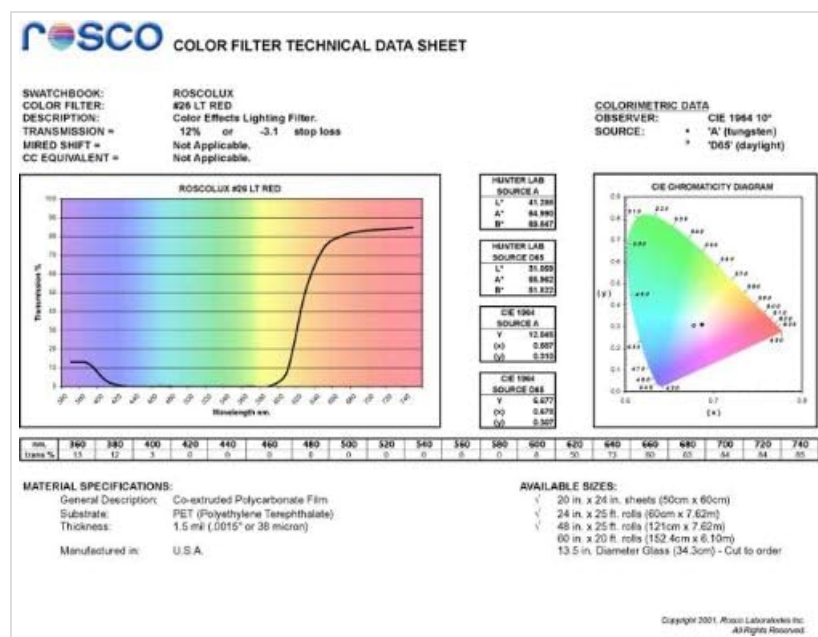


Image: A technical data sheet for Roscolux #26 Light Red, showing transmission curves, colorimetric data, and material specifications.

## 8. WARRANTY AND SUPPORT

Specific warranty information for the Rosco Roscolux Light Red filter is not provided in this manual. For details regarding product warranty, returns, or technical support, please refer to the official Rosco website or contact Rosco customer service directly.

You can find more information about Roscolux filters on the official Rosco website: [Rosco Roscolux Filters](#)



[Rosco Guide to Color Filters: Understanding and Applying Stage Lighting Colors](#)

A comprehensive guide from Rosco detailing the science and artistic application of color filters for stage lighting. Explore Roscolux filters, spectrum analysis, manufacturing techniques, and practical uses for various lighting scenarios.



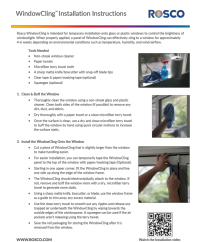
[Rosco X-Effects LED Projector User Guide: Operation, Specifications, and Accessories](#)

Comprehensive user guide for the Rosco X-Effects LED Projector, detailing setup, operation, DMX control, safety, specifications, and available accessories for professional lighting applications.



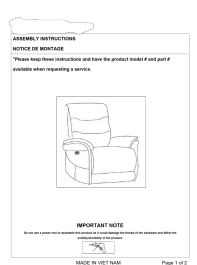
[Rosco X-Effects LED Projector User Guide: Installation, Operation, and Specifications](#)

Comprehensive user guide for the Rosco X-Effects LED Projector series, covering installation, assembly, weatherproofing, wiring, DMX control, accessories, specifications, and warranty information. Designed for professional lighting applications.



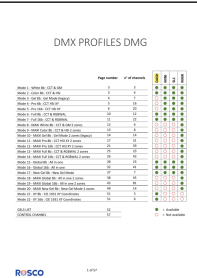
[Rosco WindowCling™ Installation Instructions](#)

Step-by-step guide for installing Rosco WindowCling, a temporary window film for controlling light. Includes tools, application, layering, and uninstallation.



[Rosco Power Recliner Assembly Instructions with USB Ports](#)

Comprehensive assembly guide for the Rosco power recliner, detailing component connection, operation of power headrest and leg rest, and use of integrated USB/USB-C ports. Includes important assembly notes and warnings.



[ROSCO DMX Profiles DMG: Technical Specification and Control Guide](#)

Detailed technical specifications and control profiles for ROSCO DMX lighting fixtures, covering various modes from White 8b to XY 16b, including gel lists and revision history.