

## Oreck BB880-AD

# Oreck Super-Deluxe Compact Canister Vacuum Cleaner User Manual

Model: BB880-AD

## 1. INTRODUCTION

---

The Oreck Super-Deluxe Compact Canister Vacuum Cleaner (Model BB880-AD) is a versatile and powerful cleaning solution designed for efficiency and ease of use. Its compact and lightweight design makes it ideal for reaching hard-to-access areas, including high ceilings, blinds, mantels, and recessed lighting. This vacuum cleaner utilizes sanitary hypo-allergenic disposable dust bags, ensuring a clean and dust-free emptying process. It comes equipped with a complete set of attachments to clean various surfaces and objects, from computers to chandeliers, providing thorough cleaning performance.



Figure 1: Oreck Super-Deluxe Compact Canister Vacuum Cleaner.

## 2. SETUP

---

Before operating your Oreck Super-Deluxe Compact Canister Vacuum Cleaner, ensure all components are properly assembled. The vacuum comes with a main canister unit, a flexible hose, extension wands, and various attachments.

1. **Unpack Components:** Carefully remove all parts from the packaging. Verify that all listed components are present.
2. **Attach Flexible Hose:** Connect the flexible hose to the suction port on the main canister unit. Ensure it clicks securely into place to prevent loss of suction during operation.
3. **Connect Extension Wands (Optional):** For extended reach, attach one or more extension wands to the end of the flexible hose. Push and twist to ensure a snug fit.
4. **Select and Attach Desired Tool:** Choose the appropriate cleaning attachment for your task (e.g., crevice tool, dusting brush, floor tool) and firmly attach it to the end of the extension wand or directly to the hose if not using wands.
5. **Insert Dust Bag:** Ensure a new, sanitary hypo-allergenic disposable dust bag is correctly inserted into the vacuum's

bag compartment. Refer to the compartment's markings for proper alignment.



Figure 2: All components of the Oreck Super-Deluxe Compact Canister Vacuum Cleaner, including the main unit, flexible hose, extension wands, and various cleaning attachments.





Figure 3: The complete set of attachments provided with the Oreck Super-Deluxe Compact Canister Vacuum Cleaner, designed for cleaning multiple surfaces and objects.

### 3. OPERATING INSTRUCTIONS

---

The Oreck Super-Deluxe is designed for powerful and efficient cleaning. Its lightweight and compact nature allows for easy portability, whether carried by hand or worn over the shoulder using the included strap.

1. **Power On:** Plug the vacuum cleaner into a standard electrical outlet. Locate the power switch (typically on the handle or main unit) and turn it to the "ON" position.
2. **Cleaning Hard-to-Reach Areas:** Utilize the flexible hose and appropriate attachments to clean areas such as high ceilings, blinds, mantels, and recessed lighting. The compact design allows for easy maneuverability in tight spaces.
3. **General Cleaning:** For general floor cleaning, attach the floor tool to the extension wands. Move the vacuum tool slowly and steadily over the surface to ensure thorough debris pickup.
4. **Powerful Suction:** The Oreck Super-Deluxe is engineered for powerful suction, ensuring no debris or dirt is left behind. For optimal performance, ensure the dust bag is not overfilled and the hose connections are secure.



Ideal for Cleaning  
**Hard-to-Reach**  
Places like High Ceilings,  
Blinds and more

Figure 4: The Oreck Super-Deluxe is ideal for cleaning hard-to-reach places like high ceilings, blinds, and more, thanks to its versatile design.





## Complete Set of Attachments for Cleaning Multiple Surfaces and Objects

Figure 5: The lightweight design of the Oreck Super-Deluxe allows it to be easily carried or worn over the shoulder for convenient cleaning.



Figure 6: The powerful suction of the Oreck Super-Deluxe ensures thorough cleaning, leaving no debris or dirt behind.

#### 4. MAINTENANCE

---

Regular maintenance ensures optimal performance and longevity of your Oreck Super-Deluxe Compact Canister Vacuum Cleaner.

- **Dust Bag Replacement:** The vacuum uses Oreck sanitary hypo-allergenic disposable dust bags. Replace the dust bag when it is full or when suction power noticeably decreases. To replace, open the bag compartment, carefully remove the full bag, and insert a new one, ensuring it is properly sealed within the compartment.
- **Hose and Attachment Inspection:** Periodically check the flexible hose and all attachments for any blockages or damage. Clear any obstructions to maintain consistent suction.
- **Exterior Cleaning:** Wipe down the exterior of the vacuum cleaner with a soft, damp cloth. Do not use harsh chemicals or abrasive cleaners.



Figure 7: The Oreck Super-Deluxe uses sanitary hypoallergenic disposable dust bags, simplifying the disposal of collected debris.

5. TROUBLESHOOTING

Problem	Possible Cause	Solution
No Power	Not plugged in; Power outlet issue; Blown fuse/tripped breaker	Ensure plug is fully inserted; Test outlet with another device; Check household fuse/breaker box.
Loss of Suction	Full dust bag; Clogged hose/attachment; Blocked filter	Replace dust bag; Clear any obstructions from hose or attachments; Check and clean/replace filters as per manual (if applicable).
Unusual Noise	Foreign object in fan/motor; Worn motor bearings	Immediately turn off and unplug. Inspect for foreign objects. If noise persists, contact customer support.

6. SPECIFICATIONS



- **Brand:** Oreck
- **Model Name:** BB880-AD
- **Special Feature:** Bag, Compact
- **Filter Type:** Bag
- **Included Components:** Canister, Crevice Tool (and other attachments)
- **Is Cordless?:** No
- **Capacity:** 16 Pounds (dust bag capacity)
- **Wattage:** 700 watts
- **Recommended Uses For Product:** Office, Car, High ceilings, Mantels and Recessed lighting
- **Form Factor:** Canister
- **Noise Level:** 78 dB
- **Amperage:** 3.18 Amps
- **Item Weight:** 4 pounds
- **Package Dimensions:** 19.6 x 11.1 x 10 inches
- **Controller Type:** Push Button
- **Control Method:** Touch
- **Portable:** Yes
- **Indoor/Outdoor Usage:** Indoor

## 7. WARRANTY

This Oreck Super-Deluxe Compact Canister Vacuum Cleaner comes with a **3-year warranty**. Please retain your proof of purchase for warranty claims. For detailed terms and conditions, refer to the warranty card included with your product or visit the official Oreck website.

## 8. SUPPORT

For further assistance, technical support, or to purchase replacement parts and accessories, please contact Oreck Customer Service or visit the official Oreck website:


**Oreck Official Website:** [Visit the Oreck Store on Amazon](#)

**Customer Service:** Refer to your product packaging or the Oreck website for the most current contact information.



© 2025 Oreck. All rights reserved.

### Related Documents - BB880-AD

	<p><a href="#">Oreck XL Compact Canister Vacuum Cleaner Service Parts List and Troubleshooting Guide</a></p> <p>Comprehensive service parts list and troubleshooting guide for Oreck XL Compact Canister Vacuum Cleaner models, including BB 280 Series, BB 870 series, BB850 series, BB880 series, and BB900 series. Find part numbers, diagrams, and repair information.</p>
---	--



### [Oreck Rinse-A-Matic Steamer XLS700 Series User's Guide](#)

Comprehensive user's guide for the Oreck Rinse-A-Matic Steamer XLS700 series carpet and hard floor cleaner, covering setup, operation, maintenance, safety, and troubleshooting.



### [Oreck Classic Pro Upright Vacuum Cleaner User's Guide](#)

Comprehensive user's guide for the Oreck Classic Pro upright vacuum cleaner, covering safety instructions, operation, maintenance, troubleshooting, and warranty information. Features HEPA filtration and odor-fighting bags.



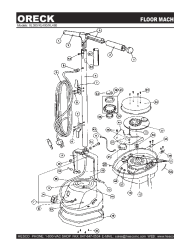
### [Oreck Elevate Conquer Upright Vacuum User Manual](#)

Comprehensive user manual for Oreck Elevate Conquer upright vacuum models UK30300, UK30300COM, and UK30370. Includes assembly, operation, safety instructions, maintenance, troubleshooting, and warranty information.



### [Oreck XL Upright Vacuum Cleaner Service Parts List and Diagrams](#)

Comprehensive service parts list and diagrams for Oreck XL Upright Vacuum Cleaner Models, including XL3600HH, XL3600RH, XL3610HH, U3700HH, U3710HH, U3720HG, U3720HR, L3760HH, XL3640HH, U3640RH, XL3800H2B, XL3900H2B, XL3910H2B, U3980H2B, U3990H2B, and Silver Series Uprights U3770HH, U3771HH. Includes part numbers, descriptions, order numbers, and troubleshooting tips.



### [Oreck Floor Machines XL300/XL400/XL480 Parts List](#)

Detailed parts list and diagram for Oreck Floor Machines models XL300, XL400, and XL480, including part numbers and descriptions.