

Wahl Professional 8329

Wahl Professional Essentials Corded Combo (Taper 2000 Clipper and AC Trimmer) Model 8329 User Manual

Comprehensive guide for setup, operation, and maintenance.

INTRODUCTION

This manual provides detailed instructions for the safe and effective use of your Wahl Professional Essentials Corded Combo, featuring the Taper 2000 Clipper and AC Trimmer. Please read all instructions carefully before initial use to ensure optimal performance and longevity of your tools.



Image: The Wahl Professional Essentials Corded Combo, including the Taper 2000 Clipper and AC Trimmer.

WHAT'S INCLUDED

Your Wahl Professional Essentials Corded Combo package contains the following items:

- Wahl Taper 2000 Clipper with Adjustable Taper Lever
- Wahl AC Trimmer
- 6 Cutting Guides (1/8" – 1")
- Blade Oil
- Cleaning Brush
- Operating Instructions
- Blade Guards

What's in The Box



Professional Clipper with Adjustable Taper Lever

Professional Trimmer

6 Cutting Guides (1/8" – 1")

Oil

Cleaning Brush

Operating Instructions

Blade Guards

Image: Contents of the Wahl Essentials Combo box, showing the clipper, trimmer, various cutting guides, oil, and cleaning brush.

SETUP

Initial Blade Preparation

Before first use, and after each use, it is crucial to oil the blades of both the Taper 2000 Clipper and the AC Trimmer. This ensures smooth operation, reduces friction, and prevents rust.

1. Ensure the device is unplugged.
2. Apply a few drops of Wahl Clipper Oil across the top and sides of the blades.
3. Turn the device on for a few seconds to distribute the oil evenly.
4. Wipe off any excess oil with a soft, clean cloth.

Attaching Cutting Guides

To achieve desired hair lengths, attach the appropriate cutting guide to the clipper. The guides are labeled with their respective lengths (e.g., 1/8", 1/4", 3/8", 1/2", 5/8", 3/4", 7/8", 1").

1. Select the desired cutting guide.
2. Align the guide with the clipper blade and firmly snap it into place.
3. Ensure the guide is securely attached before operating the clipper.

OPERATING INSTRUCTIONS

Wahl Taper 2000 Clipper



Image: The Wahl Taper 2000 Clipper highlighting its stainless steel blades, variable taper and texture, electromagnetic motor, lightweight and balanced design, and corded power.

- **Power Source:** The Taper 2000 is a corded electric clipper designed for continuous power.
- **Adjustable Taper Lever:** This lever allows for variable taper and texture, making it suitable for blending and fading. Adjust the lever to change the closeness of the cut without changing the guide.
- **Clipper Over Comb Technique:** Ideal for clipper-over-comb work, allowing for precise blending and shaping.
- **Wet or Dry Use:** The clipper is designed to cut effectively on both wet and dry hair.

Your browser does not support the video tag.

Video: Demonstrates the use of the Wahl Essentials Combo, including the Taper 2000 Clipper for various cutting techniques and the AC Trimmer for detailing.

Wahl AC Trimmer

AC TRIMMER

Scoop Nose Design

Electromagnetic motor

Great for beginners and students

Great for outlining around the face, ears and neck

Durable and Dependable

Corded for continuous power



Image: The Wahl AC Trimmer highlighting its scoop nose design, electromagnetic motor, and durability, suitable for outlining around the face, ears, and neck.

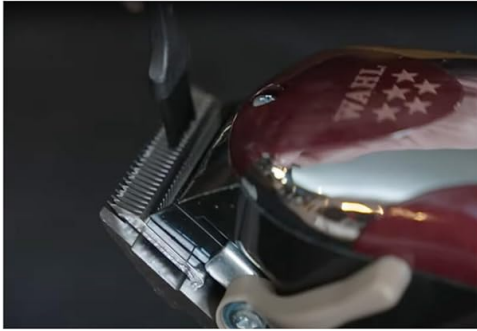
- **Power Source:** The AC Trimmer is a corded electric device, providing consistent power for precise work.
- **Scoop Nose Design:** This design is optimized for outlining around the face, ears, and neck, allowing for detailed finishing.
- **Close Cutting:** Use a light touch when trimming to achieve clean, sharp lines.

MAINTENANCE

Proper maintenance ensures the longevity and performance of your Wahl tools. Follow these steps after every use:

Quick Tips

To Maintain Top Performance



STEP 1 - Clean It

Use your cleaning brush to get any loose hair that has accumulated between the blade and clipper.



STEP 2 - Disinfect It

Use Wahl Clini-Clip Cleaner to effectively kill and remove bacteria, viruses, and fungi.



STEP 3- Oil It

Use Wahl Blade Oil to reduce friction, prevent rust and run smooth.



STEP 4 - Wipe It

Wipe away any excess oil using a soft cloth.

Image: A visual guide to quick maintenance tips for Wahl clippers, including cleaning, disinfecting, oiling, and wiping the blades.

1. **Clean It:** Use the provided cleaning brush to remove any loose hair accumulated between the blade and the clipper/trimmer.
2. **Disinfect It:** Apply a clipper disinfectant spray (not included) to the blades to kill bacteria, viruses, and fungi.
3. **Oil It:** Apply 2-3 drops of Wahl Blade Oil to the blades. This reduces friction, prevents rust, and ensures smooth operation.
4. **Wipe It:** Wipe away any excess oil with a soft cloth.

Your browser does not support the video tag.

Video: A short demonstration on how to properly oil clipper blades to prevent pulling and maintain performance.

Blade Replacement

Over time, blades may become dull. Replacement blades are available for both the Taper 2000 Clipper and AC Trimmer. Refer to the specific blade replacement instructions provided with your replacement blades or consult the Wahl Professional website for guidance.

TROUBLESHOOTING

Problem	Possible Cause	Solution
Clipper/Trimmer pulls hair	Dull blades, insufficient oil, hair buildup.	Clean and oil blades. If problem persists, replace blades.
Device not turning on	No power, loose connection.	Check power outlet and cord connection. Ensure switch is in 'ON' position.
Excessive heat during use	Lack of lubrication, prolonged continuous use.	Oil blades regularly. Allow device to cool down during extended use.

SPECIFICATIONS

- **Brand:** Wahl Professional
- **Model Number:** 8329
- **Power Source:** Corded Electric
- **Item Weight:** 1.5 Pounds
- **Product Dimensions:** 6.5 x 4 x 4 inches
- **Blade Material:** High-carbon steel (Taper 2000)
- **Recommended Use:** Professional, Trimming
- **UPC:** 043917832906

WARRANTY AND SUPPORT

For warranty information, product registration, or technical support, please visit the official Wahl Professional website or contact their customer service department. Keep your purchase receipt as proof of purchase for any warranty claims.

Manufacturer: Wahl Professional