

## Manuals+

[Q & A](#) | [Deep Search](#) | [Upload](#)

manuals.plus /

- › [Kingston Brass](#) /
- › [Kingston Brass KB1001 22 Gauge Pop-Up Drain Installation and User Manual](#)

## Kingston Brass KB1001

# Kingston Brass KB1001 22 Gauge Pop-Up Drain User Manual

Model: KB1001 | Finish: Polished Chrome

### 1. PRODUCT OVERVIEW

The Kingston Brass KB1001 Pop-Up Drain is designed for lavatory sinks, featuring durable brass construction and a polished chrome finish. This assembly includes all necessary components for a standard installation, ensuring reliable performance and a tarnish-resistant surface.

#### Key Features:

- Solid Brass Construction for durability.
- Polished Chrome finish for tarnish and corrosion resistance.
- Designed for easy installation.
- 1-1/4" Diameter Tube.
- Fits all standard lavatory drain openings.
- Includes mounting hardware.



*Figure 1: Kingston Brass KB1001 Polished Chrome Pop-Up Drain Assembly Components. This image displays all the components included in the Kingston Brass KB1001 pop-up drain assembly, featuring the polished chrome drain body, stopper, lift rod, and connecting hardware.*

## 2. SETUP AND INSTALLATION

Before beginning installation, ensure all parts are present and inspect them for any damage. Refer to the technical drawing for component identification and dimensions.

### Required Tools:

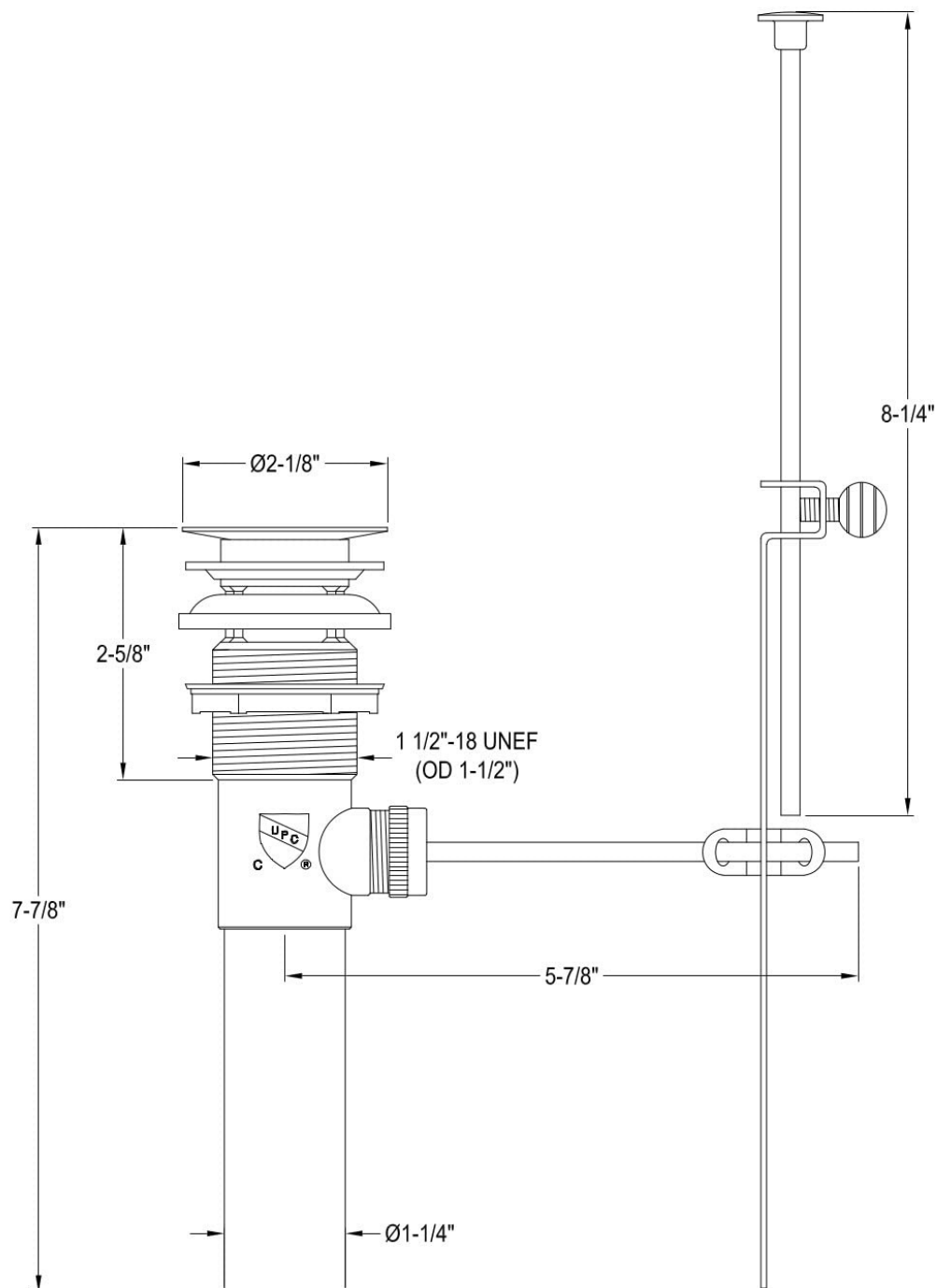
- Adjustable Wrench or Basin Wrench
- Plumber's Putty or Silicone Sealant
- Teflon Tape (Thread Seal Tape)
- Rag or Towel

### Installation Steps:

1. **Prepare the Sink Opening:** Clean the sink drain opening thoroughly, removing any old putty or sealant.
2. **Apply Sealant to Drain Flange:** Apply a bead of plumber's putty or silicone sealant around the underside of the drain flange (the top part that sits in the sink).
3. **Insert Drain Body:** Insert the drain body through the sink opening from above, pressing down firmly to create a seal with the putty/sealant.
4. **Install Gaskets and Nut:** From underneath the sink, slide the rubber washer, friction washer, and mounting nut onto the drain body. Hand-tighten the mounting nut.
5. **Align and Tighten:** Ensure the drain body is properly aligned. Use an adjustable wrench to tighten the mounting nut securely, but do not overtighten. Wipe away any excess putty/sealant.
6. **Connect Tailpiece (if separate):** If the tailpiece is not pre-attached, apply Teflon tape to the threads of the drain body where the tailpiece connects. Screw the tailpiece onto the drain body and hand-tighten, then use a wrench for a snug fit. *It is recommended to apply Teflon tape or pipe sealant to the threads where the tailpiece connects to the drain body, even if pre-assembled, to prevent leaks.*
7. **Assemble Pop-Up Mechanism:** Insert the lift rod through the faucet body (if applicable) and connect it to the clevis strap. Attach the horizontal rod (pivot rod) to the drain body's opening. Secure the pivot rod with the pivot nut, ensuring the ball is properly seated and sealed with its washer.
8. **Adjust Stopper:** Insert the pop-up stopper into the drain opening. Adjust the clevis strap and lift rod to ensure the stopper opens and closes correctly. The stopper itself may be two pieces; ensure both parts are securely tightened together before installation.
9. **Test for Leaks:** Fill the sink with water and then drain it, carefully checking all connections for any leaks. Tighten connections as needed.

# KB1001,2,3,4,5,6,7,8,9,0MB,VN,AC,7SB

Brass Pop-Up with Overflow, 22 Gauge



Ref# KB1001,2,3,4,5,6,7,8,9,0MB,VN,AC,7SB | 2023-05-A

Figure 2: Technical drawing of Kingston Brass KB1001 Pop-Up Drain with dimensions. A detailed technical drawing illustrating the dimensions and structure of the Kingston Brass KB1001 pop-up drain, including measurements for the drain body, tailpiece, and lift rod mechanism.

## 3. OPERATING INSTRUCTIONS

The Kingston Brass KB1001 Pop-Up Drain operates via a lift rod mechanism, typically located on the faucet. To operate:

- **To Close the Drain:** Push down on the lift rod to lower the stopper and seal the drain opening, allowing the sink to fill with water.
- **To Open the Drain:** Pull up on the lift rod to raise the stopper, allowing water to drain from the sink.

Ensure the lift rod moves freely and the stopper fully seals and opens without obstruction.

## 4. MAINTENANCE

Proper maintenance will extend the life and preserve the finish of your pop-up drain.

### Cleaning:

- Clean the polished chrome finish regularly with a soft, damp cloth.
- Use only mild soap and water for cleaning.
- **Avoid** abrasive cleaners, harsh chemicals, ammonia-based products, or scouring pads, as these can damage the finish and lead to deterioration.
- Rinse thoroughly after cleaning and dry with a soft cloth to prevent water spots.

### Regular Checks:

- Periodically check the drain for any signs of leaks, especially around the mounting nut and tailpiece connections.
- Inspect the pop-up stopper and pivot rod for any debris or hair accumulation that might impede operation. Clean as necessary.
- Ensure the stopper's two pieces remain securely tightened.

## 5. TROUBLESHOOTING

This section addresses common issues you might encounter with your pop-up drain.

Problem	Possible Cause	Solution
<b>Leakage at drain connections</b>	Improperly tightened nuts, insufficient sealant, or missing washers. Loose connection between drain body and tailpiece.	Ensure all nuts are tightened. Apply plumber's putty or silicone sealant under the drain flange. For tailpiece connections, apply Teflon tape or pipe sealant to threads and tighten securely. Check for proper washer placement.
<b>Pop-up stopper does not seal or open properly</b>	Lift rod or clevis strap misaligned, pivot rod obstructed, or debris in drain. Stopper parts loose.	Adjust the clevis strap and lift rod to ensure proper stopper movement. Remove the stopper and clean any debris from the drain opening and pivot rod. Ensure the two pieces of the stopper are securely tightened.
<b>Finish deterioration or discoloration</b>	Exposure to harsh cleaning chemicals or abrasive materials.	Use only mild soap and water for cleaning. Avoid abrasive cleaners, harsh chemicals, and scouring pads. Regular gentle cleaning is recommended.
<b>Slow draining</b>	Hair or debris accumulation in the drain.	Remove the pop-up stopper and clear any obstructions from the drain opening and pivot rod.

## 6. SPECIFICATIONS

Detailed specifications for the Kingston Brass KB1001 Pop-Up Drain.



Figure 3: Kingston Brass KB1001 Pop-Up Drain dimensions and finish options. This diagram provides key dimensions of the Kingston Brass KB1001 pop-up drain and showcases various available finish options, highlighting its 22-gauge solid brass construction and overflow design.

- **Model Number:** KB1001
- **Material:** Brass
- **Gauge:** 22 Gauge
- **Color/Finish:** Polished Chrome
- **Item Weight:** 14.88 ounces (approx. 0.93 lbs)
- **Product Dimensions:** 8.25 x 2.13 x 2.13 inches
- **Size:** 2-1/8" (L) x 2-1/8" (W) x 7-7/20" (H)
- **Shape:** Round

- **Style:** Traditional
- **Included Components:** Drain assembly
- **Drain Tube Diameter:** 1-1/4 inches
- **Overflow:** Yes, designed with overflow
- **Sink Drain Hole Diameter Compatibility:** Minimum 1-5/8 inches, Maximum 1-3/4 inches
- **Sink Drain Hole Thickness Compatibility:** Maximum 2-1/4 inches
- **UPC:** 735090558130, 663370224577

## 7. WARRANTY AND SUPPORT

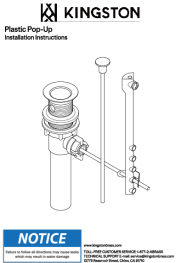
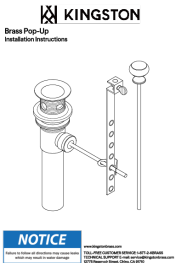
Warranty information for the Kingston Brass KB1001 Pop-Up Drain was not provided in the product data. For specific warranty details or technical support, please contact Kingston Brass directly.

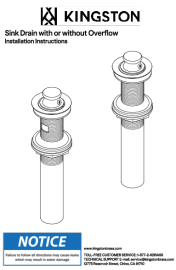
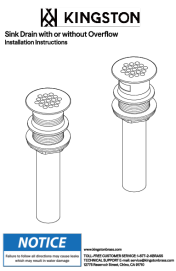
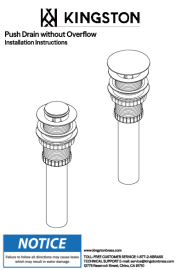
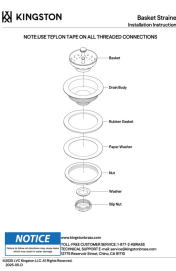
### Contact Information:

Please refer to the official Kingston Brass website or product packaging for the most current customer service contact details, including phone numbers, email addresses, or online support portals.

© 2024 Kingston Brass Inc. All Rights Reserved.

### Related Documents - KB1001

 <p>The image shows the cover of the 'Kingston Brass Plastic Pop-Up Drain Installation Instructions' manual. It features the Kingston logo, a technical drawing of the drain assembly, and a 'NOTICE' section at the bottom.</p>	<p><a href="#">Kingston Brass Plastic Pop-Up Drain Installation Instructions</a></p> <p>Step-by-step guide for installing a Kingston Brass plastic pop-up bathroom sink drain, including tools required, parts identification, and detailed installation procedures.</p>
 <p>The image shows the cover of the 'Kingston Brass Brass Pop-Up Drain Installation Instructions' manual. It features the Kingston logo, a technical drawing of the drain assembly, and a 'NOTICE' section at the bottom.</p>	<p><a href="#">Kingston Brass Brass Pop-Up Drain Installation Instructions</a></p> <p>Detailed installation instructions for the Kingston Brass Brass Pop-Up Bathroom Sink Drain. Learn how to install, troubleshoot common issues, and find contact information for support.</p>

<div><p><b>KINGSTON</b> Sink Drain with or without Overflow Installation Instructions</p><p><b>NOTICE</b></p></div>	<p><a href="#">Kingston Brass KB3000 Sink Drain Installation Instructions</a></p> <p>Detailed installation instructions for the Kingston Brass KB3000 lift and turn bathroom sink drain with or without overflow. Includes tools required and step-by-step guidance.</p>
<div><p><b>KINGSTON</b> Sink Drain with or without Overflow Installation Instructions</p><p><b>NOTICE</b></p></div>	<p><a href="#">Kingston Brass Sink Drain Installation Instructions</a></p> <p>Step-by-step guide for installing a Kingston Brass sink drain, with or without an overflow.</p>
<div><p><b>KINGSTON</b> Push Drain without Overflow Installation Instructions</p><p><b>NOTICE</b></p></div>	<p><a href="#">Kingston Brass Push Drain without Overflow Installation Instructions</a></p> <p>Comprehensive installation guide for Kingston Brass push-open sink drains, detailing required tools and step-by-step assembly for a leak-free installation.</p>
<div><p><b>KINGSTON</b> Basket Strainer Installation Instructions</p><p>NOTE: USE TOP-LOK TAPE ON ALL THREADED CONNECTIONS</p><p><b>NOTICE</b></p></div>	<p><a href="#">Kingston K121B Basket Strainer Installation Instructions</a></p> <p>Detailed installation instructions for the Kingston K121B kitchen sink basket strainer. Learn how to properly install your Kingston Brass sink strainer with this guide.</p>