

Onkyo TX-SR602

Onkyo TX-SR602 7.1 Channel AV Home Theater Receiver Instruction Manual

Model: TX-SR602

Introduction	Setup	Operation	Maintenance	Troubleshooting	Specifications	Warranty & Support
------------------------------	-----------------------	---------------------------	-----------------------------	---------------------------------	--------------------------------	--

1. INTRODUCTION

This manual provides detailed instructions for the proper setup, operation, and maintenance of your Onkyo TX-SR602 7.1 Channel AV Home Theater Receiver. Please read this manual thoroughly before using the receiver to ensure optimal performance and safety. The TX-SR602 is designed to deliver high-quality surround sound for your home theater experience.



Figure 1.1: Front panel of the Onkyo TX-SR602 receiver. This image displays the receiver's front panel, featuring the central display, various control buttons for input selection, tuning, and setup, and a prominent master volume knob with a blue LED ring. The display currently shows "FM 105.7 MHz".

2. SETUP

2.1 Unpacking and Placement

- Carefully remove the receiver from its packaging.
- Place the receiver on a stable, level surface with adequate ventilation. Ensure there is sufficient space around the unit for heat dissipation.
- Avoid placing the receiver near heat sources or in direct sunlight.

2.2 Connecting Speakers

The TX-SR602 supports a 7.1 channel speaker configuration. Ensure all speakers are correctly wired with proper polarity (+ to + and - to -).

1. **Front Speakers (Left/Right):** Connect to the FRONT L/R terminals.
2. **Center Speaker:** Connect to the CENTER terminal.
3. **Surround Speakers (Left/Right):** Connect to the SURROUND L/R terminals.
4. **Surround Back Speakers (Left/Right):** Connect to the SURROUND BACK L/R terminals for 7.1 channel audio.
5. **Subwoofer:** Connect a powered subwoofer to the SUBWOOFER PRE OUT jack.

2.3 Connecting Audio/Video Sources

Connect your audio and video components to the appropriate input jacks on the rear panel of the receiver.

- **Digital Audio:** Use coaxial digital input or optical digital input for devices like DVD players, CD players, or game consoles. The receiver features multiple optical and coaxial inputs.
- **Analog Audio:** Connect devices such as tape decks, CD players, or VCRs using RCA stereo cables to the corresponding analog audio inputs (e.g., CD, TAPE, VCR).
- **Video Inputs:** Connect video sources (e.g., DVD, VCR, VIDEO 1-4) using composite or S-Video cables. Note that this model does not feature HDMI connectivity.
- **Antennas:** Connect the supplied AM loop antenna and FM wire antenna to their respective terminals for radio reception.

2.4 Power Connection

After all other connections are made, plug the receiver's power cord into a wall outlet. Ensure the power switch on the front panel is in the OFF position before connecting.

3. OPERATION

3.1 Basic Controls

- **Power Button:** Located on the front panel, press to turn the receiver ON or OFF.
- **Master Volume Knob:** Adjusts the overall sound level. Rotate clockwise to increase volume, counter-clockwise to decrease.
- **Input Selector Buttons:** Use the buttons (e.g., CD, DVD, TUNER, VIDEO 1-4) on the front panel or remote control to select your desired audio/video source.

3.2 Tuner Operation

- Press the **TUNER** button to select the AM or FM band.
- Use the **TUNING** buttons (up/down arrows) to manually tune to a station.
- Press the **PRESET** buttons to recall stored radio stations.
- To store a station, tune to the desired frequency, then press **MEMORY** followed by a **PRESET** button.

3.3 Sound Modes

The TX-SR602 supports various surround sound formats:

- **Dolby Digital:** For multi-channel audio from DVD, Blu-ray, or digital broadcasts.
- **DTS:** Another multi-channel audio format, commonly found on DVDs and CDs.
- **Dolby Pro Logic IIx:** Converts stereo or 5.1 channel sources into 7.1 channel surround sound.
- Use the **LISTENING MODE** buttons on the remote or front panel to cycle through available sound modes.

3.4 Headphone Use

Connect standard stereo headphones to the **PHONES** jack on the front panel. This will mute the main speakers.

3.5 Remote Control

The included universal remote control provides full functionality for the receiver and can be programmed to control other components. Refer to the remote control section in the full manual for programming instructions.

4. MAINTENANCE

4.1 Cleaning

- Before cleaning, disconnect the power cord from the wall outlet.
- Use a soft, dry cloth to wipe the exterior surfaces of the receiver.
- Do not use abrasive cleaners, waxes, or solvents as they may damage the finish.
- Periodically clean ventilation openings to prevent dust buildup.

5. TROUBLESHOOTING

If you experience issues with your receiver, consult the following common problems and solutions before seeking professional service.

Problem	Possible Cause	Solution
No power	Power cord disconnected; Power switch off	Ensure power cord is securely plugged in; Press the power button to turn on.
No sound from speakers	Incorrect input selected; Speaker wires disconnected; Volume too low; Headphones connected	Select correct input source; Check speaker wire connections and polarity; Increase volume; Disconnect headphones.
No sound from a specific channel	Speaker wire loose; Channel level set too low	Check speaker connections for that channel; Adjust channel levels in the setup menu.
Remote control not working	Batteries depleted; Obstruction between remote and receiver	Replace batteries; Remove any obstructions; Ensure remote is pointed at the receiver's sensor.

6. SPECIFICATIONS

Key technical specifications for the Onkyo TX-SR602 receiver:

- **Channels:** 7.1
- **Output Power:** 85 Watt per channel (8 Ohm, 20-20000 Hz, THD 0.08%, 7 channels driven)
- **Sound Output Type:** Surround Sound
- **Built-in Decoders:** DTS, DTS 96/24, DTS Neo:6, DTS-ES Discrete 6.1, DTS-ES Matrix 6.1, DTS-ES decoder, Dolby Digital, Dolby Digital Surround EX, Dolby Pro Logic IIx
- **Receiver Tuner Type:** Digital AM/FM
- **Response Bandwidth:** 10 - 100000 Hz
- **Input Impedance:** 47 kOhm
- **Input Sensitivity:** 200 mV
- **Power Consumption Operational:** 650 Watt
- **Digital Inputs:** Coaxial Digital (Yes), Optical Digital (Yes)
- **Digital Outputs:** Optical Digital (Yes)
- **Headphone Jack:** Yes
- **Remote Control Type:** Universal remote control
- **THX Certified:** Yes
- **Dimensions (H x W):** Approximately 6.89 in. x 17.13 in.
- **Weight:** 29.98 lb. (approximately 30 pounds)
- **Color:** Black, Silver


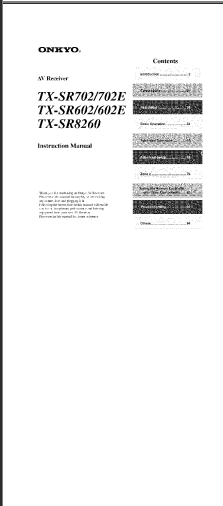
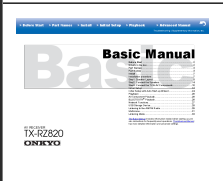

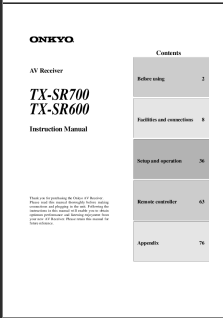
7. WARRANTY AND SUPPORT

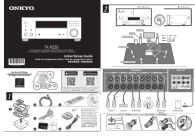
For warranty information and technical support, please refer to the warranty card included with your product or visit the official Onkyo website. Keep your purchase receipt as proof of purchase for warranty claims.

Onkyo Support: [Visit Onkyo Support Website](#)



Related Documents - TX-SR602

	<p>Onkyo TX-SR702/702E, TX-SR602/602E, TX-SR8260 AV Receiver Instruction Manual</p> <p>Comprehensive instruction manual for the Onkyo TX-SR702/702E, TX-SR602/602E, and TX-SR8260 AV receivers, covering setup, operation, features, and troubleshooting for an optimal home theater experience.</p>
	<p>Onkyo TX-SR702/702E, TX-SR602/602E, TX-SR8260 AV Receiver Instruction Manual</p> <p>Comprehensive instruction manual for Onkyo AV receivers models TX-SR702/702E, TX-SR602/602E, and TX-SR8260. Covers setup, operation, features, safety precautions, and troubleshooting.</p>
	<p>ONKYO TX-RZ820 AV Receiver Basic Manual: Setup and Operation Guide</p> <p>Comprehensive guide to setting up and operating the ONKYO TX-RZ820 AV Receiver. Learn about connections, initial setup, playback options, network functions, and more.</p>
	<p>Onkyo TX-NR5010 TX-NR3010 AV Receiver Instruction Manual - Setup & Operation Guide</p> <p>Comprehensive instruction manual for Onkyo TX-NR5010 and TX-NR3010 AV receivers. Covers safety, setup, connections, operations, features, remote control, and troubleshooting for home theater audio systems.</p>
	<p>Onkyo TX-SR700/TX-SR600 AV Receiver Instruction Manual</p> <p>Comprehensive instruction manual for the Onkyo TX-SR700 and TX-SR600 AV Receivers, covering setup, connections, operation, features, and troubleshooting.</p>



[Onkyo TX-RZ30 Initial Setup Guide](#)

This guide provides essential information for the initial setup of the Onkyo TX-RZ30 9.2-Channel AV Receiver. Learn how to connect speakers, set up your system, and get started with your new home theater experience.