

Oral-B D15511

Oral-B ProfessionalCare 5000 XL d15.511 Electric Toothbrush User Manual

Model: D15511

IMPORTANT SAFETY INFORMATION

Please read all instructions before using this appliance. When using electrical products, especially when children are present, basic safety precautions should always be followed, including the following:

- The product packaging may contain information different from that shown on our website. Please always read the label, warnings, and instructions provided with the product before use or consumption.
- Do not place or store the product where it can fall or be pulled into a tub or sink.
- Do not place in or drop into water or other liquid.
- Do not reach for a product that has fallen into water. Unplug immediately.
- This product is not intended for use by children under 3 years of age.
- If the product is dropped, the brush head should be replaced before the next use even if no damage is visible.

PRODUCT OVERVIEW

The Oral-B ProfessionalCare 5000 XL d15.511 is an advanced electric toothbrush designed for effective oral hygiene. It features a unique 3D cleaning action and a professional timer to guide your brushing.



Image: The Oral-B ProfessionalCare 5000 XL d15.511 electric toothbrush with its charging base.

Key Features:

- **3D Cleaning System:** Delivers 20,000 pulsations and 7,600 oscillations per minute for thorough plaque removal.
- **1 Speed Setting:** Provides consistent cleaning performance.
- **Sensitive Pressure Control:** Automatically reduces brushing speed if you brush too hard, protecting your teeth and gums.
- **Professional Timer:** Signals every 30 seconds to move to the next quadrant of your mouth, ensuring a complete 2-minute brushing.
- **Full Charge Indicator:** Helps manage battery life for optimal performance.

SETUP

1. Charging the Toothbrush

Before first use, charge the toothbrush for at least 16 hours. The full charge indicator will provide feedback on the battery status.

1. Plug the charging unit into an electrical outlet.
2. Place the toothbrush handle on the charging unit. The charge indicator light will illuminate to confirm charging.
3. A full charge provides approximately 30 minutes of brushing time, or about 15 two-minute brushings.

2. Attaching the Brush Head



Image: Diagram illustrating the process of attaching a brush head to the toothbrush handle.

Align the brush head with the shaft of the toothbrush handle and push it down firmly until it clicks into place.

OPERATING INSTRUCTIONS

1. Brushing Your Teeth

1. Wet the brush head and apply a small amount of toothpaste.
2. Place the brush head on your teeth, then press the On/Off button to start.
3. Guide the brush head slowly from tooth to tooth, spending a few seconds on each tooth surface.
4. The Professional Timer will signal every 30 seconds, indicating when to move to the next quadrant of your mouth. After 2 minutes, a longer signal indicates the completion of the recommended brushing time.
5. Apply light pressure. The Sensitive Pressure Control will alert you if you are brushing too hard.

2. 3D Cleaning Action

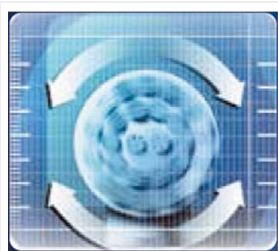


Image: Illustration of the oscillating-rotating motion of the brush head.

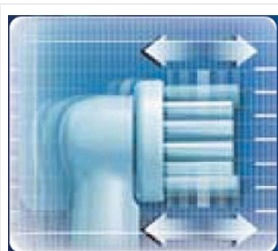


Image: Illustration of the pulsating action of the brush bristles.

The 3D cleaning system combines pulsations to break up plaque and oscillations to sweep it away. Allow the brush to do the work without excessive force.

MAINTENANCE

1. Cleaning After Use

1. After brushing, rinse the brush head thoroughly under running water with the handle switched on.
2. Switch off the handle and remove the brush head.
3. Rinse both the brush head and the handle separately under running water.
4. Wipe the handle dry with a cloth.

2. Replacing the Brush Head

Dentists recommend replacing your brush head every 3 months, or sooner if the bristles become splayed or worn. Indicator bristles will fade halfway to signal when to replace your brush head.

3. Battery Care

To maintain the maximum capacity of the rechargeable battery, unplug the charging unit and fully discharge the handle with regular use at least once every 6 months. Then, recharge it fully.

TROUBLESHOOTING

Problem	Possible Cause	Solution
Toothbrush does not turn on.	Battery is completely discharged.	Place the toothbrush on the charger for at least 30 minutes.
Reduced brushing power.	Low battery charge.	Recharge the toothbrush.
Battery life has significantly decreased.	Normal battery degradation over time (as noted in user reviews).	Ensure regular full discharge and recharge cycles. Consider replacing the unit if battery performance is no longer acceptable after several years of use.
Rubber grip on handle is deteriorating.	Wear and tear from regular use and exposure to water/toothpaste (as noted in user reviews).	This is cosmetic wear and does not typically affect functionality. Ensure proper cleaning and drying after each use to minimize degradation.

SPECIFICATIONS

- **Model Number:** D15511
- **Cleaning System:** 3D (Pulsations and Oscillations)
- **Pulsations:** 20,000 per minute
- **Oscillations:** 7,600 per minute
- **Speed Settings:** 1
- **Pressure Control:** Sensitive (automatic speed reduction)
- **Timer:** Professional 2-minute timer with 30-second quadrant alerts

- **Power Source:** Rechargeable Battery
- **Dimensions (packaged):** 23.4 x 13 x 7.2 cm
- **Weight (packaged):** 480.81 grams
- **Age Range:** Adults

WARRANTY AND SUPPORT

For warranty information and customer support, please refer to the documentation included with your product or visit the official Oral-B website. Keep your purchase receipt as proof of purchase for any warranty claims. You can also visit the [Braun Store on Amazon](#) for additional product information and support resources.