

## Bemis 1955CT 000

# BEMIS 1955CT Commercial Open Front Plastic Toilet Seat User Manual

Model: 1955CT 000 | Brand: Bemis

### PRODUCT OVERVIEW

The Bemis 1955CT Commercial Open Front Plastic Toilet Seat is a heavy-duty industrial seat designed for secure installation and long-lasting use. It features check hinges that prevent the seat from going 11 degrees beyond vertical, protecting the flush valve or toilet tank. This product is proudly made in the USA with earth-friendly materials and processes.

#### Key Features:

- **Non-Corrosive:** Equipped with 300 series stainless steel posts and pintles for durability.
- **STA-TITE Commercial Fastening System:** Ensures the seat installs with a snap and remains secure, preventing loosening or wiggling.
- **Commercial Plastic Construction:** Ideal for commercial applications, resisting chips, wear, and stains.
- **Universal Fit:** Designed to fit all elongated toilets, including popular brands like Kohler, American Standard, and TOTO.
- **Made in USA:** Manufactured with environmentally conscious materials and processes.



Image: Top-down view of the Bemis 1955CT Elongated White Open Front Toilet Seat.



**Never Loosens.  
Guaranteed.™**

- **Commercial Grade**
- **Heavy-Duty**
- **No Cover**



## **SOLID PLASTIC TOILET SEAT**

Image: Visual representation highlighting key features: "Never Loosens. Guaranteed.", "Commercial Grade", "Heavy-Duty", and "No Cover".

### **SPECIFICATIONS**

<b>Color</b>	White
<b>Brand</b>	Bemis
<b>Material</b>	Plastic
<b>Style</b>	Elongated
<b>Shape</b>	Open Front

Product Dimensions	18.5"L x 16.5"W
Item Weight	3.7 Pounds
Operation Mode	Manual
Country of Origin	China
Item Model Number	1955CT 000

## INSTALLATION GUIDE

The Bemis 1955CT toilet seat features the STA-TITE Commercial Fastening System for a secure and stable installation. Follow these steps for proper setup:

### 1. Determine Toilet Bowl Size:

Before installation, ensure you have the correct seat size (Elongated or Round) for your toilet bowl. Measure the distance from the center of the mounting holes to the front edge of the toilet bowl.

For **Round** bowls, this measurement is typically 16.5 inches.

For **Elongated** bowls, this measurement is typically 18.5 inches.

# MEASURING IS SIMPLE

Take 5 squares of toilet paper and place them over your existing toilet bowl starting between the hinges/holes and extending to the front of the bowl

**Elongated = 4½ or more squares**  
**Round = 4 squares**

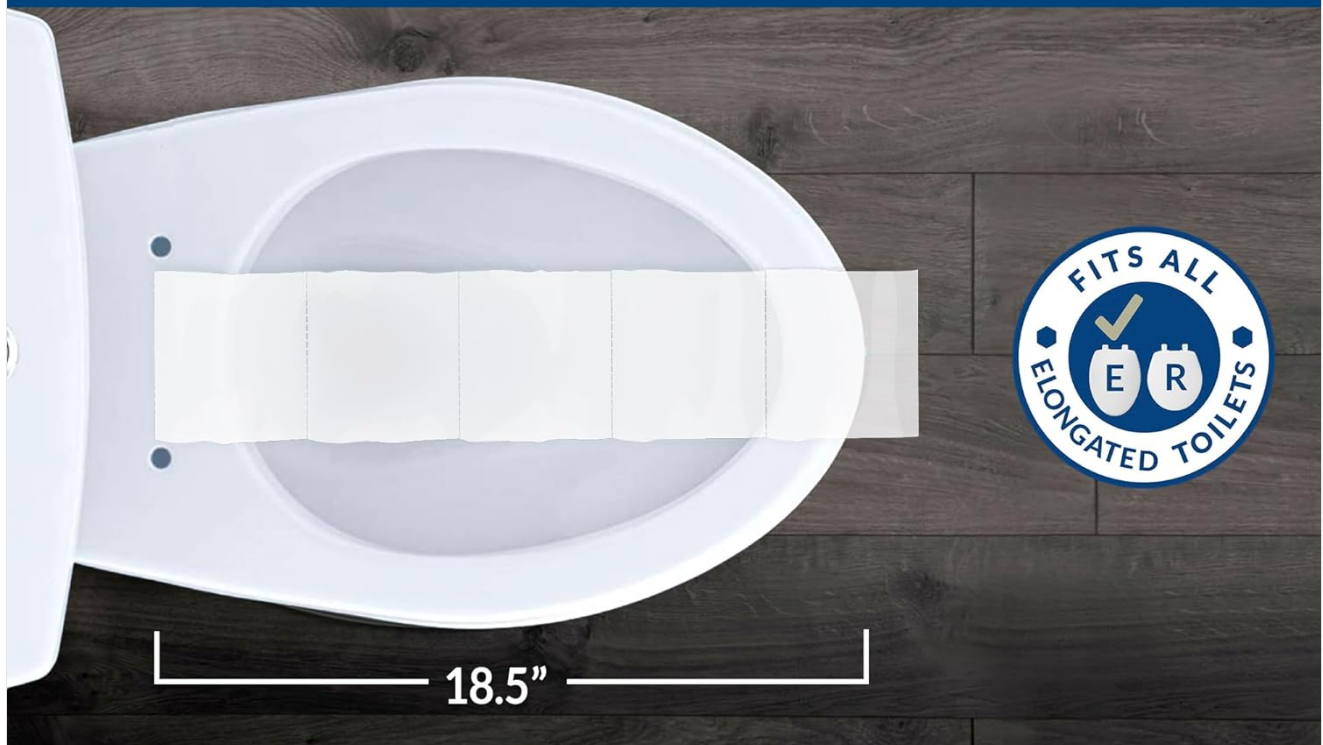


Image: A visual guide demonstrating how to measure your toilet bowl to determine if it is round or elongated.

## 2. Seat Placement:

Place the toilet seat onto the toilet bowl, aligning the seat's mounting posts with the holes in the toilet ceramic.

# Easy Installation



Watch the installation video  
on this page for more detail

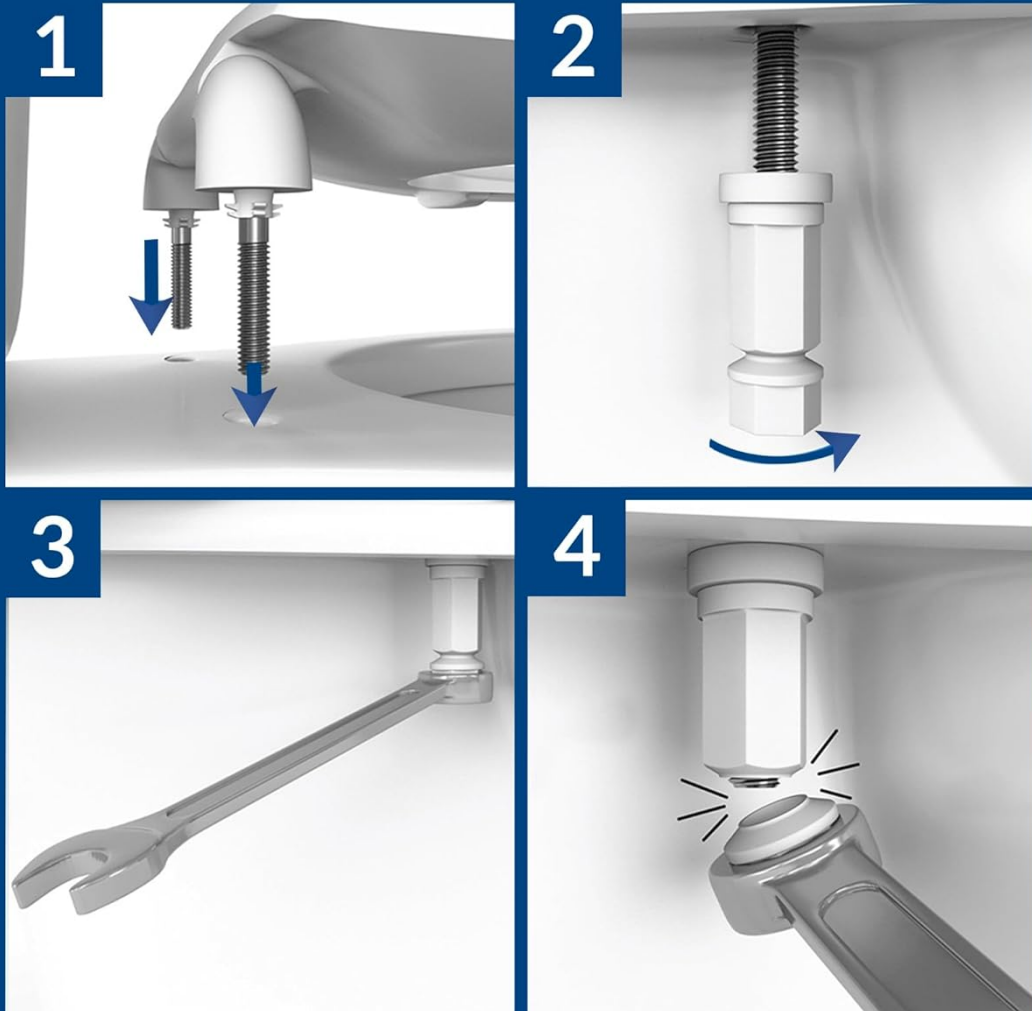


Image: A four-step diagram illustrating the installation process, from placing the seat to tightening the hardware.

### 3. Secure the STA-TITE Fasteners:

From underneath the toilet bowl, thread the STA-TITE nuts (Hardware A) onto the bolts extending from the seat. Lightly finger-tighten them on both sides to hold the seat in place.

### 4. Final Tightening:

Using a 5/8" (16mm) wrench, tighten the STA-TITE nuts. As you tighten, hold the seat centered on the bowl. Continue tightening until the bottom nut snaps off, indicating that the correct torque has been achieved. Discard the snapped-off portion of the nut. This ensures the seat is securely fastened and will not loosen over time.

## OPERATION

The Bemis 1955CT is an open-front toilet seat designed for commercial and heavy-duty use. Its primary function is to provide a stable and durable seating surface. The open-front design is standard in commercial settings for

hygiene and ease of use.

The check hinges prevent the seat from opening beyond 11 degrees past vertical, which helps protect the toilet tank and flush valve from damage due to excessive force when raising the seat.





Image: The Bemis 1955CT toilet seat installed on a toilet, with the seat in the raised position.

## MAINTENANCE AND CARE

---

To maintain the glossy finish and extend the life of your Bemis 1955CT toilet seat, clean it regularly with mild soap and water. Avoid using abrasive cleaners, harsh chemicals, or scouring pads, as these can damage the plastic surface and finish.

For best results, wipe the seat dry with a soft cloth after cleaning.

## TROUBLESHOOTING

---

The STA-TITE fastening system is designed to prevent loosening. If your seat feels loose after installation, ensure the STA-TITE nuts were tightened until they snapped off. This mechanism ensures proper torque and a secure fit.

- **Loose Seat:** If the seat feels loose, re-check the installation of the STA-TITE fasteners. Ensure they were tightened until the bottom nut snapped off. This indicates proper torque.
- **Stains/Discoloration:** For minor stains, use mild soap and water. Avoid harsh chemicals which can cause permanent damage to the plastic.
- **Hinge Issues:** The check hinges are designed to prevent over-rotation. If the seat does not stay up or falls back, ensure there are no obstructions and that the hinges are clean.


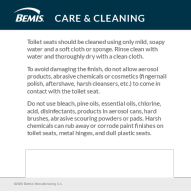
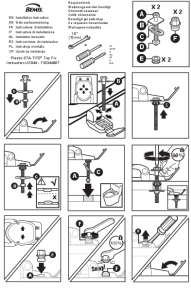

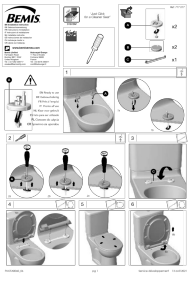
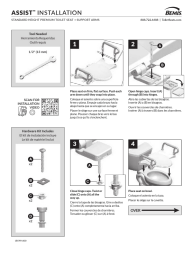
## WARRANTY AND SUPPORT

---

The Bemis 1955CT Commercial Open Front Plastic Toilet Seat comes with a manufacturer's warranty that covers purchases in the US and Canada for 1 year from the date of purchase.

For warranty claims, technical support, or further assistance, please refer to the contact information provided on the product packaging or the official Bemis website.



 <p><b>BEMIS</b> HAVEN 2000 HV2000E   HV2000R</p>	<p><a href="#">Bemis Haven 2000 Bidet Seat: Installation, Operation, and Maintenance Manual</a></p> <p>Comprehensive guide for installing, operating, cleaning, and troubleshooting the Bemis Haven 2000 Bidet Seat (models HV2000E, HV2000R). Includes safety precautions, parts list, step-by-step instructions, and specifications.</p>
 <p><b>BEMIS CARE &amp; CLEANING</b></p> <p> toilet seats should be cleaned using only mild, soapy water and a soft cloth or sponge. Rinse clean with water and thoroughly dry with a clean cloth.</p> <p>To avoid damaging the finish, do not use aerosol products, or other chemicals or cleaners. Bleach, polish, aftershave, harsh cleaners, etc.2 to come in contact with the toilet seat.</p> <p>Do not use bleach, pine oils, essential oils, chlorine, acid, disinfectants, products in aerosol cans, hand sanitizers, or other cleaning products on your bidet. Harsh chemicals can rub away or corrode paint finishes on toilet seats, metal fittings, and dual plastic vents.</p>	<p><a href="#">Bemis Toilet Seat Care and Cleaning Guide</a></p> <p>Comprehensive instructions on how to properly care for and clean Bemis toilet seats, detailing recommended cleaning agents and methods to avoid damaging the finish.</p>
 <p><b>BEMIS</b></p> <p>Part Number: STA-TITE Model: STA-TITE Size: 14" x 14" x 14"</p> <p>1. Remove the old toilet seat. 2. Install the new toilet seat. 3. Tighten the screws. 4. Test the seat.</p>	<p><a href="#">Bemis STA-TITE® Top Fix Toilet Seat Installation Guide</a></p> <p>Comprehensive installation instructions for the Bemis STA-TITE® Top Fix toilet seat, including required tools, parts list, step-by-step assembly, cleaning advice, and warranty information. Features clear textual descriptions of diagrams.</p>
 <p><b>BEMIS</b> HAVEN 5000 OWNER'S MANUAL</p>	<p><a href="#">Bemis Haven 5000 Owner's Manual: Installation, Operation, and Specifications</a></p> <p>Comprehensive owner's manual for the Bemis Haven 5000 bidet seat, covering installation, product features, maintenance, warranty, and technical specifications.</p>
 <p><b>BEMIS</b></p> <p>1. Remove the old toilet seat. 2. Install the new toilet seat. 3. Tighten the screws. 4. Test the seat.</p>	<p><a href="#">Bemis Toilet Seat Installation Guide and Maintenance</a></p> <p>Comprehensive installation instructions and maintenance guide for Bemis toilet seats, featuring the 'Just Click' system for easy cleaning. Learn how to install, clean, and care for your Bemis toilet seat.</p>
 <p><b>ASSIST™ INSTALLATION</b></p> <p>1. Remove the old toilet seat. 2. Install the new toilet seat. 3. Tighten the screws. 4. Test the seat.</p>	<p><a href="#">Bemis ASSIST™ Standard Height Premium Toilet Seat Installation Guide</a></p> <p>Step-by-step installation instructions for the Bemis ASSIST™ Standard Height Premium Toilet Seat with Support Arms. Includes tool requirements, hardware list, warranty, and care information.</p>