

Manuals+

[Q & A](#) | [Deep Search](#) | [Upload](#)

manuals.plus /

- › [Master Lock](#) /
- › [Master Lock Key Lock Box 5400EC Instruction Manual](#)

Master Lock 5400EC

Master Lock Key Lock Box 5400EC Instruction Manual

Model: 5400EC | Brand: Master Lock

1. INTRODUCTION AND OVERVIEW

The Master Lock 5400EC Set Your Own Combination Portable Lock Box is designed for secure storage of keys, offering durability and convenience. Its portable design allows for easy installation over door knobs. Users can set their own four-digit combination for keyless access and enhanced security. A protective shutter door shields the combination dials from environmental elements like weather, dirt, and grime. The molded body and vinyl-coated shackle are engineered to prevent scratching of door surfaces.





Figure 1: Master Lock 5400EC Key Lock Box

2. KEY FEATURES

- **Large Capacity:** Securely stores up to five standard (2-inch) house keys.
- **Customizable Combination:** Features a four-digit combination lock that can be set and reset to thousands of personalized code options.
- **Durable Construction:** Built with a metal body for enhanced durability, suitable for both indoor and outdoor use.
- **Surface Protection:** Includes a vinyl-coated shackle to prevent scratching of door surfaces and a shutter door to protect combination dials from weather and debris.
- **Portable Design:** Offers removable "over the knob" installation, fitting most ball, biscuit, and tulip door knob styles.
- **Pre-set Combination:** The lock box combination is initially preset to 0-0-0-0. Instructions for resetting the combination are included.



Figure 2: Key features of the lock box including vinyl-coated shackle, 4-digit combination, weather protection cover, and storage compartment.

3. SETUP INSTRUCTIONS

3.1 Setting Your Combination

1. Open the lock box by setting the dials to the default combination (0-0-0-0) and pulling down the cover.
2. Locate the reset lever inside the lock box. Push the reset lever into position 'A' (towards the shackle).
3. Rotate the combination dials to your desired four-digit combination. Ensure the numbers are clearly aligned.
4. Push the reset lever back to position 'B' (away from the shackle).
5. Scramble the combination dials to lock the box. Your new combination is now set.



	5400D	5422D	5420D	5424D
House Keys	✓	✓	✓	✓
Key Fobs & Access Cards	✗	✗	✓	✓
Knobs & Handles	✓	✓	✓	✓
Levers	✗	✗	✓	✗

Figure 3: Visual guide for setting the lock box combination.

3.2 Installation (Over-the-Knob Design)

1. Ensure the lock box is open and the shackle is released.
2. Begin installing with the lock box facing away from the door.
3. Turn the lock box around to face you once it is over the door knob or handle.
4. Close the shackle securely onto the lock box and close the compartment door.



Figure 4: Proper installation method for the portable lock box.



Figure 5: The lock box is compatible with most knobs and handles, but not levers.

4. OPERATING INSTRUCTIONS

4.1 Opening the Lock Box

1. Rotate the combination dials to your set four-digit code.
2. Pull down the shutter door to reveal the key compartment.
3. Retrieve or place keys as needed.

4.2 Closing and Securing the Lock Box

1. Ensure all keys are securely placed within the compartment.
2. Close the shutter door firmly.
3. Scramble the combination dials to prevent unauthorized access.



Figure 6: The lock box provides a secure alternative to traditional key hiding spots.

5. MAINTENANCE

To ensure the longevity and proper functioning of your Master Lock Key Lock Box, follow these maintenance guidelines:

- **Regular Cleaning:** Periodically wipe down the exterior with a soft, damp cloth to remove dirt and grime. Avoid abrasive cleaners.
- **Shutter Door Care:** Keep the shutter door free of debris to ensure smooth operation and proper protection of the combination dials.
- **Lubrication:** If the dials become stiff, apply a small amount of graphite lubricant to the moving parts. Do not use oil-based lubricants.
- **Weather Protection:** While designed for outdoor use, extreme weather conditions may affect performance over time. Ensure the shutter door is always closed when not in use.

6. TROUBLESHOOTING

- **Dials are Stiff:** Apply graphite lubricant to the dials. Ensure no foreign objects are obstructing movement.
- **Cannot Open with Correct Combination:** Double-check that each number is precisely aligned. Ensure the reset lever is in the correct position (B) after setting the combination.
- **Shackle is Stuck:** Ensure the combination is correctly entered and the release mechanism is fully engaged. Check for any obstructions.

7. SPECIFICATIONS

Brand	Master Lock
Model Name	5400D (5400EC)
Lock Type	Mechanical Code Lock
Material	Metal
Color	Black
Item Weight	1.06 Pounds
External Dimensions (H x W x D)	6.25in (158.75mm) x 3.56in (90.42mm) x 1.50in (38mm)
Internal Dimensions (H x W x D)	3in (76.2mm) x 2.75in (70mm) x 1in (25mm) (L-shaped interior)
Shackle Length	1.406in (35.71mm)
Shackle Width	1.875in (47.62mm)
Shackle Diameter	0.406in (10.3mm)
Key Capacity	5 standard (2 inch) house keys
Country of Origin	China
UPC	071649214516

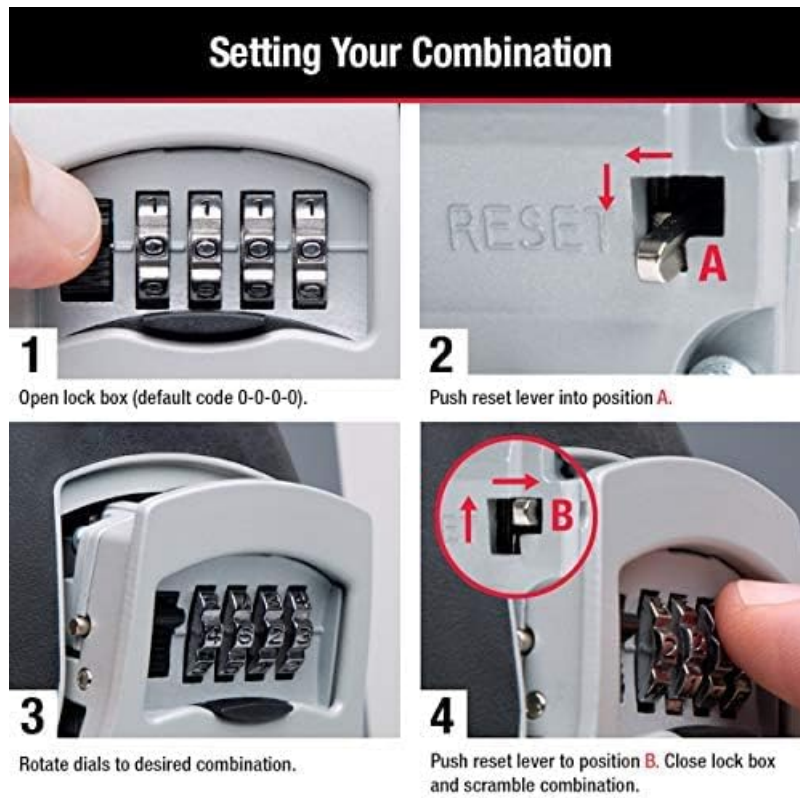


Figure 7: Internal dimensions and key capacity of the lock box.

8. WARRANTY AND SUPPORT

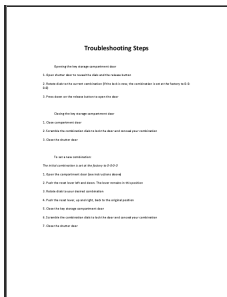
The Master Lock 5400EC Key Lock Box comes with a **Limited Lifetime Warranty**, providing peace of mind regarding its durability and performance.

For additional support, user guides, or troubleshooting assistance, please refer to the official Master Lock website or contact their customer service. Digital versions of the user guide and manual are also available:

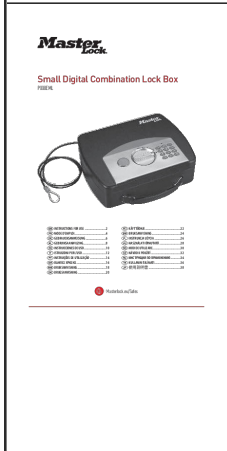
- [User Guide \(PDF\)](#)
- [User Manual \(PDF\)](#)

Related Documents - 5400EC

	<p>Master Lock #5400D Key Storage Combination Lock Instructions</p> <p>Comprehensive instructions for operating, setting combinations, and using the Master Lock #5400D portable key safe with shackle. Learn how to open, secure, and maintain your key storage lock.</p>
	<p>Master Lock 5400D Shackle Model Key Storage Lock Box Instructions</p> <p>Detailed instructions for using, setting a new combination, and hanging the Master Lock 5400D Shackle Model key storage lock box. Learn how to operate the combination lock and secure your keys.</p>



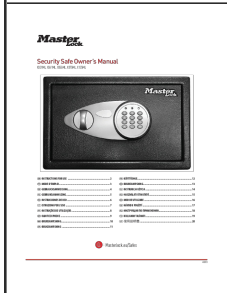
[Master Lock Key Safe Troubleshooting Guide](#)
Step-by-step troubleshooting guide for Master Lock key safes, covering opening, closing, and resetting combinations.



[Master Lock Small Digital Combination Lock Box P008EML Instructions](#)
This document provides instructions for the Master Lock Small Digital Combination Lock Box, model P008EML. Learn how to install batteries, program user codes, and open the lock box.



[Master Lock 5401EURD Key Safe Instructions](#)
Comprehensive instructions for operating, setting a new combination, and wall-mounting the Master Lock 5401EURD key safe. Includes multilingual guidance.



[Master Lock Security Safe Owner's Manual - Models X031ML, X041ML, X055ML, X075ML, X125ML](#)
Comprehensive owner's manual for Master Lock security safes (models X031ML, X041ML, X055ML, X075ML, X125ML). Learn how to install batteries, program codes, operate, and troubleshoot your safe.