

Conair CD82WCS

Conair CD82WCS Instant Heat Curling Iron User Manual

Model: CD82WCS (CD82LL)

[Important Safety Instructions](#)

[Product Overview](#)

[Setup](#)

[Operating Instructions](#)

[Maintenance](#)

[Troubleshooting](#)

[Specifications](#)

[Warranty & Support](#)

IMPORTANT SAFETY INSTRUCTIONS

When using electrical appliances, especially when children are present, basic safety precautions should always be followed, including the following:

DANGER – To reduce the risk of electrocution:

- Always unplug this appliance immediately after using.
- Do not use while bathing or in a shower.
- Do not place or store appliance where it can fall or be pulled into a tub or sink.
- Do not place in or drop into water or other liquid.
- Do not reach for an appliance that has fallen into water. Unplug immediately.

WARNING – To reduce the risk of burns, electrocution, fire, or injury to persons:

- An appliance should never be left unattended when plugged in.
- Do not pull, twist, or wrap line cord around appliance.
- This appliance should not be used by, on, or near children or individuals with certain disabilities.
- Use this appliance only for its intended use as described in this manual. Do not use attachments not recommended by the manufacturer.
- Never operate this appliance if it has a damaged cord or plug, if it is not working properly, or if it has

been dropped, damaged, or dropped into water.

- Keep the cord away from heated surfaces.
- Never use while sleeping.
- Never drop or insert any object into any opening.
- Do not use outdoors or operate where aerosol (spray) products are being used or where oxygen is being administered.
- Do not use an extension cord with this appliance.
- This appliance is hot when in use. Do not let eyes or bare skin touch heated surfaces.
- Do not place the heated appliance directly on any surface while it is operating or cooling.
- Never block the air openings of the appliance or place it on a soft surface, such as a bed or couch, where the air openings may be blocked.
- Do not touch the hot surfaces of the appliance. Use handles or knobs.
- Before plugging in, read the information about dual voltage contained in the "Operating Instructions" section of this manual.

PRODUCT OVERVIEW

The Conair CD82WCS Instant Heat Curling Iron features a 1-1/4 inch barrel, designed for creating various curl styles. It includes multiple heat settings and a quick heat-up function.

What's in the box



1 1/4 in. Conair® Double Ceramic
Curling Iron

Image: Contents of the box, showing the 1-1/4 inch Conair Double Ceramic Curling Iron.

Key Components:



Image: A detailed diagram highlighting the features of the Conair Instant Heat Curling Iron, including the 1-1/4 inch barrel, cool tip, multi-layer barrel, 25 heat settings, 30-second heat-up, and turbo heat button.

- **1-1/4 inch Barrel:** Ideal for creating soft, natural curls and waves.
- **Cool Tip:** Provides a safe area to hold the iron during styling.
- **Multi-Layer Barrel:** Designed for even heat distribution and consistent styling.
- **25 Heat Settings:** Allows for precise temperature control for various hair types.
- **30-Second Heat-up:** Quickly reaches desired temperature for efficient styling.
- **Turbo Heat Button:** Provides an additional heat boost for challenging sections or faster styling.

SETUP

1. Unpack the curling iron and ensure all components are present.
2. Inspect the appliance for any visible damage. Do not use if damaged.
3. Ensure your hands are dry before plugging in the appliance.
4. Plug the curling iron into a suitable electrical outlet. Refer to the "Dual Voltage" section for

international use.

5. Place the curling iron on a heat-resistant surface, ensuring it is stable and away from flammable materials.

OPERATING INSTRUCTIONS

Powering On and Heat Settings:

1. Plug the appliance into an electrical outlet.
2. Turn the ON/OFF switch to the 'ON' position. The power indicator light will illuminate.
3. Select your desired heat setting using the rotating dial. Refer to the heat guide below for recommendations based on hair type.
4. Allow approximately 30 seconds for the iron to heat up.
5. For an extra boost of heat, press the Turbo Heat button.

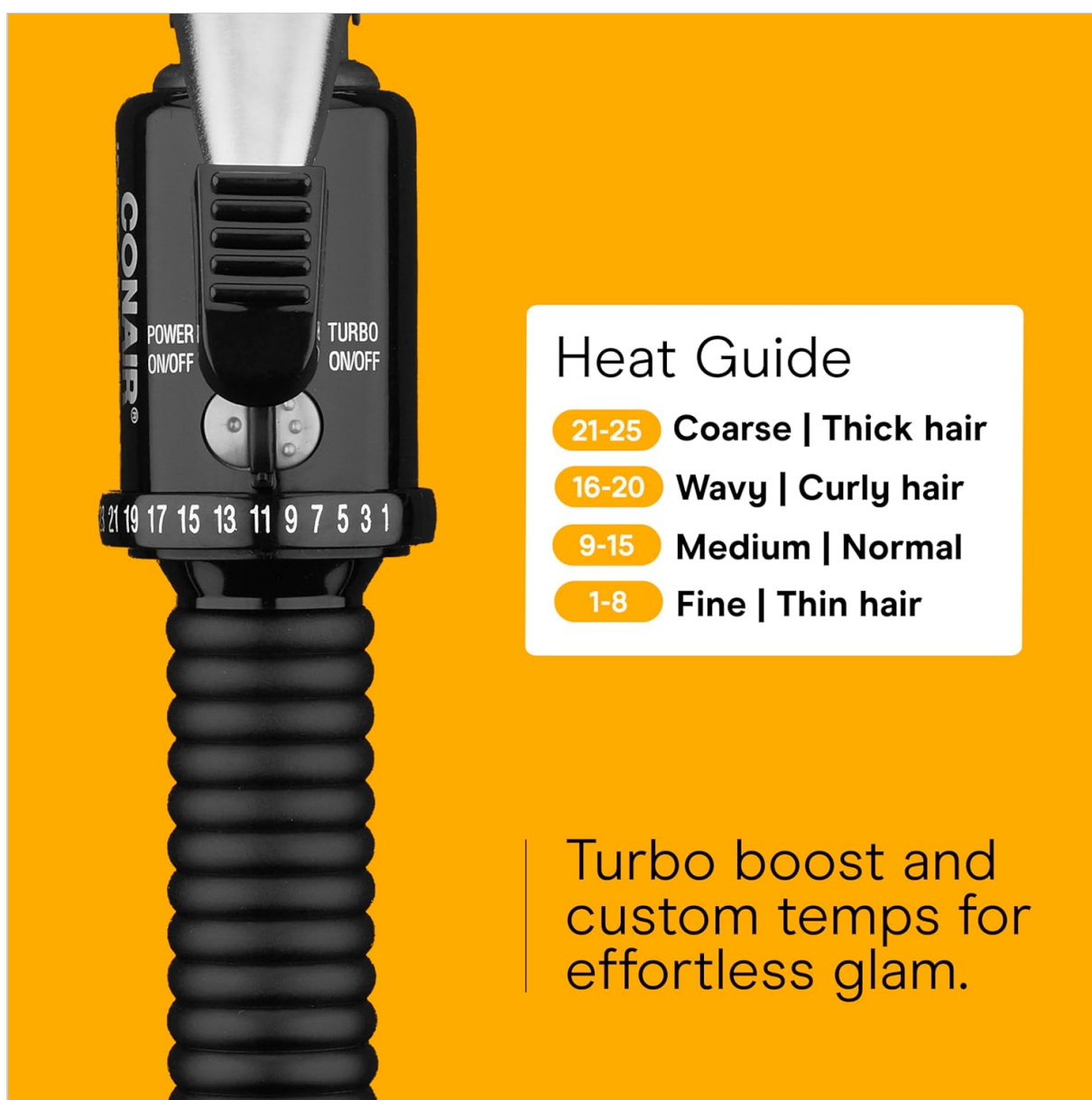


Image: Close-up of the curling iron's heat setting dial and a heat guide indicating recommended settings for different hair types: 21-25 for coarse/thick hair, 16-20 for wavy/curly hair, 9-15 for medium/normal hair, and 1-8 for fine/thin hair.

Curling Hair:

1. Ensure hair is clean, dry, and tangle-free.

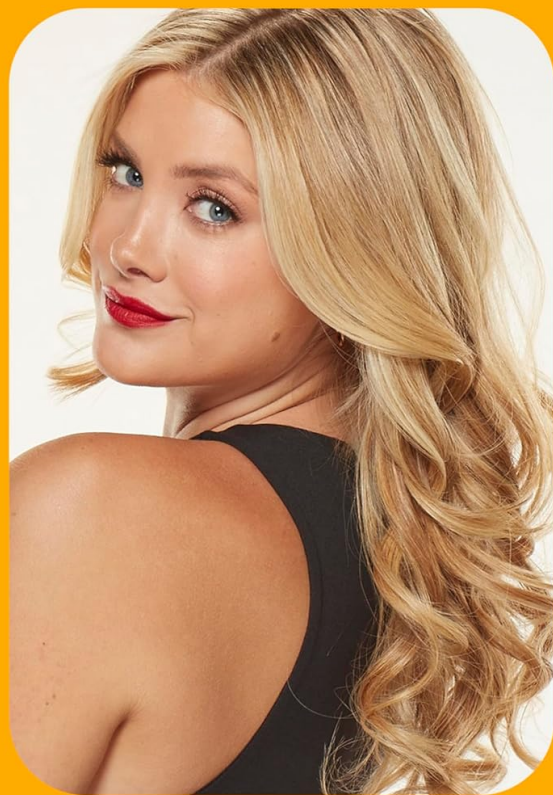
2. Section your hair into manageable strands, typically 1-2 inches wide.
3. Open the clamp and place a section of hair between the clamp and the barrel, starting a few inches from the scalp.
4. Close the clamp and gently slide the iron down to the ends of the hair section.
5. Roll the hair upwards towards the scalp, ensuring the hair is evenly wrapped around the barrel. Hold for a few seconds (duration depends on hair type and desired curl intensity).
6. Open the clamp and release the curl. Do not pull the iron straight out; allow the curl to gently unwind.
7. Repeat for all sections of hair. Allow curls to cool completely before styling or brushing for better hold.

1¼ in. Curling Iron

Sculpt soft, natural curls



Before



After

Image: A comparison showing hair before and after using the 1-1/4 inch Conair Curling Iron, demonstrating the creation of soft, natural curls.

Dual Voltage:

This curling iron is designed with dual voltage capability, making it suitable for international travel. It automatically adjusts to the local voltage (120V or 240V). A plug adapter may be required for the specific country you are visiting.



Style worldwide
with your
dual-voltage
curl companion.

Image: Illustrates the dual-voltage capability of the curling iron, indicating its suitability for use in various international locations with appropriate adapters.

MAINTENANCE

Cleaning:

- Always unplug the appliance and allow it to cool completely before cleaning.
- Wipe the barrel and exterior surfaces with a damp cloth. Do not use abrasive cleaners or solvents.
- Ensure no water or moisture enters the internal components.

Storage:

- When not in use, unplug the iron.
- Allow the appliance to cool completely before storing.
- Store in a dry location, out of reach of children.
- Do not wrap the cord around the appliance. Hang or coil the cord loosely.

TROUBLESHOOTING

Problem	Possible Cause	Solution
Appliance does not turn on.	Not plugged in, power outlet issue, or internal fault.	Ensure the appliance is securely plugged into a working outlet. Check the power switch. If still not working, discontinue use.
Iron not heating up sufficiently.	Incorrect heat setting, or appliance fault.	Verify the heat setting is appropriate for your hair type. Allow sufficient time for heat-up. Try the Turbo Heat button.
Hair is snagging or pulling.	Hair not properly detangled, or improper technique.	Ensure hair is completely detangled before use. Use smaller sections of hair. Ensure hair is smoothly placed in the clamp.

If you experience issues not listed here, or if the problem persists, please contact customer support.

SPECIFICATIONS

- **Model Number:** CD82WCS (CD82LL)
- **Barrel Size:** 1-1/4 inches
- **Material:** Tourmaline
- **Heat Settings:** 25
- **Max Temperature:** 204.4 Degrees Celsius (400 Degrees Fahrenheit)
- **Heat-up Time:** Approximately 30 seconds
- **Power Source:** Corded Electric
- **Voltage:** Dual Voltage (120V/240V)
- **Product Dimensions:** 32.26 x 4.32 x 6.6 cm
- **Item Weight:** 363 g
- **Manufacturer:** CONAIR CORPORATION

WARRANTY AND SUPPORT

For warranty information, product support, or to inquire about replacement parts, please refer to the warranty card included with your purchase or visit the official Conair website. Keep your proof of purchase for warranty claims.

Conair Customer Service: Please visit www.conair.com/support for contact details and further assistance.