

## TC Helicon 964100002

# TC-Helicon Switch-3 Accessory Pedal Instruction Manual

Model: 964100002

## 1. PRODUCT OVERVIEW

The TC-Helicon Switch-3 is a durable 3-switch accessory pedal designed to extend the control capabilities of compatible TC Helicon and TC Electronic products. It provides hands-free control over various programmable functions, enhancing live performance and studio workflow.

Typical applications include:

- Harmony Mute activation
- Effect Bypass toggling
- Preset Up/Down navigation
- Looper control (Record, Play, Dub, Stop, Erase)



Figure 1: Top view of the TC-Helicon Switch-3 Accessory Pedal, showing three footswitches labeled 1, 2, and 3.

## 2. SETUP

---

To set up your TC-Helicon Switch-3 pedal, follow these steps:

1. **Connect the Pedal:** Use a standard TRS (Tip-Ring-Sleeve) cable to connect the Switch-3 to the designated footswitch input on your compatible TC Helicon or TC Electronic device. The input jack is located on the rear panel of the Switch-3.
2. **Power On:** Ensure your main TC Helicon/TC Electronic device is powered on. The Switch-3 draws power directly from the connected device, so no separate power supply is typically required for the Switch-3 itself.
3. **Device Configuration:** Refer to the instruction manual of your specific TC Helicon/TC Electronic device to configure the functions assigned to each of the three footswitches. This configuration is typically done within the settings or menu of the main unit.



*Figure 2: Rear view of the Switch-3, highlighting the TRS input for connection to a compatible device.*

## 3. OPERATING INSTRUCTIONS

---

Once connected and configured, the Switch-3 provides intuitive, hands-free control. The functionality of each switch (1, 2, 3) is determined by the settings on your main TC Helicon/TC Electronic unit.

- **Momentary Action:** The footswitches are momentary, meaning they activate a function when pressed and held, or trigger a function with a single press, depending on the host device's programming.
- **Common Uses:**
  - **Switch 1:** Often assigned to functions like preset down, looper record/play, or effect toggle.
  - **Switch 2:** Commonly used for preset up, looper stop, or another effect toggle.
  - **Switch 3:** Frequently assigned to harmony mute, bypass, or looper clear.

For specific assignments and advanced control options, consult the user manual of your TC Helicon or TC Electronic product.

## 4. MAINTENANCE

---

The TC-Helicon Switch-3 is built with a sturdy construction designed for durability. To ensure longevity and optimal performance:

- **Cleaning:** Wipe the pedal with a soft, dry cloth to remove dust and debris. Avoid using harsh chemicals or abrasive cleaners.
- **Storage:** Store the pedal in a dry environment, away from extreme temperatures and direct sunlight.
- **Cable Care:** Ensure the TRS cable is not kinked or strained, as this can damage the cable or the pedal's input jack.

## 5. TROUBLESHOOTING

If you encounter issues with your Switch-3 pedal, consider the following:

- **No Response from Pedal:**
  - Verify the TRS cable is securely connected at both ends (Switch-3 and host device).
  - Ensure the host TC Helicon/TC Electronic device is powered on and functioning correctly.
  - Check the settings on your host device to confirm the footswitches are correctly assigned and enabled.
  - Test with a different TRS cable to rule out cable failure.
- **Incorrect Functionality:**
  - Review the host device's manual for correct footswitch assignment procedures. Some devices may require specific polarity settings for external footswitches, though the Switch-3 is designed for standard compatibility with TC Helicon products.
  - Ensure no conflicting external controllers or software applications are simultaneously attempting to control the host device, as this can lead to unexpected behavior.

## 6. SPECIFICATIONS

Brand	TC Helicon
Model Number	964100002
Color	Black
Item Weight	1.32 pounds (600 Grams)
Product Dimensions	10 x 6 x 2 inches
Hardware Interface	TRS (Tip-Ring-Sleeve) Jack
Signal Format	Analog
Voltage	240 Volts ( <i>Note: Power supplied by host device</i> )






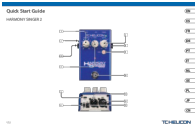

Figure 3: Product label on the bottom of the Switch-3, displaying model and manufacturing information.

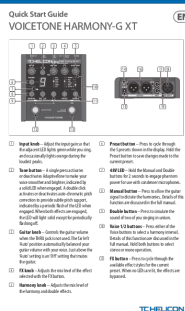
## 7. WARRANTY AND SUPPORT

For warranty information and technical support, please refer to the documentation provided with your main TC Helicon or TC Electronic device, or visit the official TC Helicon website. Product registration may be available for extended warranty benefits.

For additional resources and product information, you may visit the [TC Helicon Store on Amazon](#).

Related Documents - 964100002

	<p><a href="#">TC-Helicon VoiceTone H1 Vocal Harmony Processor User Manual</a></p> <p>Comprehensive user manual for the TC-Helicon VoiceTone H1, detailing its features, setup, operation, and technical specifications for creating realistic vocal harmonies. Learn how to use guitar input or key selection for precise harmony control.</p>
	<p><a href="#">TC HELICON VOICETONE H1: Intelligent Vocal Harmony Stompbox</a></p> <p>Explore the TC HELICON VOICETONE H1, a compact, single-button stompbox designed to deliver realistic, guitar-controlled vocal harmonies. This product information document details its simple operation, key features like auto-key sensing and manual harmony control, robust build, and integration capabilities for musicians.</p>
	<p><a href="#">TC Helicon HARMONY V100/V60 Quick Start Guide</a></p> <p>Quick start guide for TC Helicon HARMONY V100/V60 acoustic amplifiers. Covers setup, controls, specifications, and safety for the 100/60 Watt 2-Channel amplifier with vocal processing, looper, Tannoy Dual Concentric Speaker, and 4-Button Footswitch.</p>
	<p><a href="#">TC Helicon HARMONY SINGER 2 Quick Start Guide</a></p> <p>A concise guide to setting up and using the TC Helicon HARMONY SINGER 2 vocal effects pedal, covering essential safety instructions, control descriptions, connections, and compliance information.</p>
	<p><a href="#">TC Helicon VoiceLive Play Quick Start Guide: 3-Button Vocal Effects Stompbox with Looping</a></p> <p>Get started quickly with the TC Helicon VoiceLive Play, a 3-button vocal effects stompbox with looping. This guide covers essential setup, operation, safety instructions, and frequently asked questions for singers and musicians.</p>



## [TC Helicon VoiceTone Harmony-G XT Quick Start Guide](#)

Concise guide to setting up and using the TC Helicon VoiceTone Harmony-G XT vocal effects processor, covering front panel controls, rear panel connections, and basic functions.