

Manuals+

[Q & A](#) | [Deep Search](#) | [Upload](#)

[manuals.plus](#) /

› [Tetra](#) /

› [Tetra Whisper Power Filter for Aquariums, Up to 60-Gallons Instruction Manual](#)

Tetra Whisper Power Filter

Tetra Whisper Power Filter for Aquariums, Up to 60-Gallons Instruction Manual

This manual provides detailed instructions for the setup, operation, maintenance, and troubleshooting of your Tetra Whisper Power Filter, designed for aquariums up to 60 gallons.

INTRODUCTION

The Tetra Whisper Power Filter provides quiet, 3-stage filtration for maintaining clean water and healthy fish in your aquarium. This filter is suitable for aquariums up to 60 gallons and features a reliable design with no moving parts in the water.



Figure 1: Tetra Whisper Power Filter 60 product packaging.

KEY FEATURES

- **Quiet & Reliable:** Engineered for quiet operation and long-term reliability.
- **3-Stage Filtration:** Provides mechanical, chemical, and biological filtration.
- **Ultra-Activated Carbon:** Effectively absorbs odors and discoloration from the water.
- **Dual-Sided Mesh:** Catches debris and fish waste in a dense, fibrous network.
- **Bio-Foam:** Creates a large three-dimensional area for beneficial aerobic bacteria, which eliminate toxic ammonia and nitrites.
- **Stay Clean Technology:** Helps reduce buildup on aquarium glass and binds small dirt particles for easier filtration.
- **Easy-to-Change Cartridges:** Uses large-sized Tetra Whisper Bio-Bag Cartridges (sold separately).



Figure 2: Diagram illustrating the 3-stage filtration process of the Tetra Whisper Power Filter.

SETUP INSTRUCTIONS

Follow these steps to properly set up your Tetra Whisper Power Filter:

1. **Unpack Components:** Carefully remove all filter components from the packaging. Ensure you have the filter housing, intake tube, impeller, and a new Tetra Whisper Bio-Bag Cartridge (size large).
2. **Install Impeller:** Insert the impeller into its well within the filter housing. Ensure it is seated correctly.
3. **Assemble Intake Tube:** Attach the intake tube to the filter housing. The intake tube has a socket for the impeller's upper bearing; ensure the impeller's upper bearing is properly supported by the intake tube. If the upper bearing fits loosely, a small piece of Teflon tape around the rubber bearing can create a snug fit.
4. **Adjust Intake Tube Length:** If your filter model has adjustable length intake tubes, select the appropriate length for your aquarium. Ensure there is at least 3 inches of space between the bottom of the intake tube and the gravel/substrate to prevent debris from jamming the impeller.
5. **Install Filter Cartridge:** Place a new Tetra Whisper Bio-Bag Cartridge (size large) into the designated slot in the filter housing. Ensure the Bio-Foam is also correctly positioned for biological filtration.
6. **Position Filter:** Hang the filter securely on the back of your aquarium. Ensure the filter is level and

stable.

7. **Prime the Filter:** Before plugging in the filter, fill the filter housing with water from your aquarium. This primes the pump and prevents the impeller from spinning dry.
8. **Connect Power:** Once the filter is primed and securely in place, plug it into a suitable power outlet. The filter should begin operating, drawing water from the aquarium and returning filtered water.

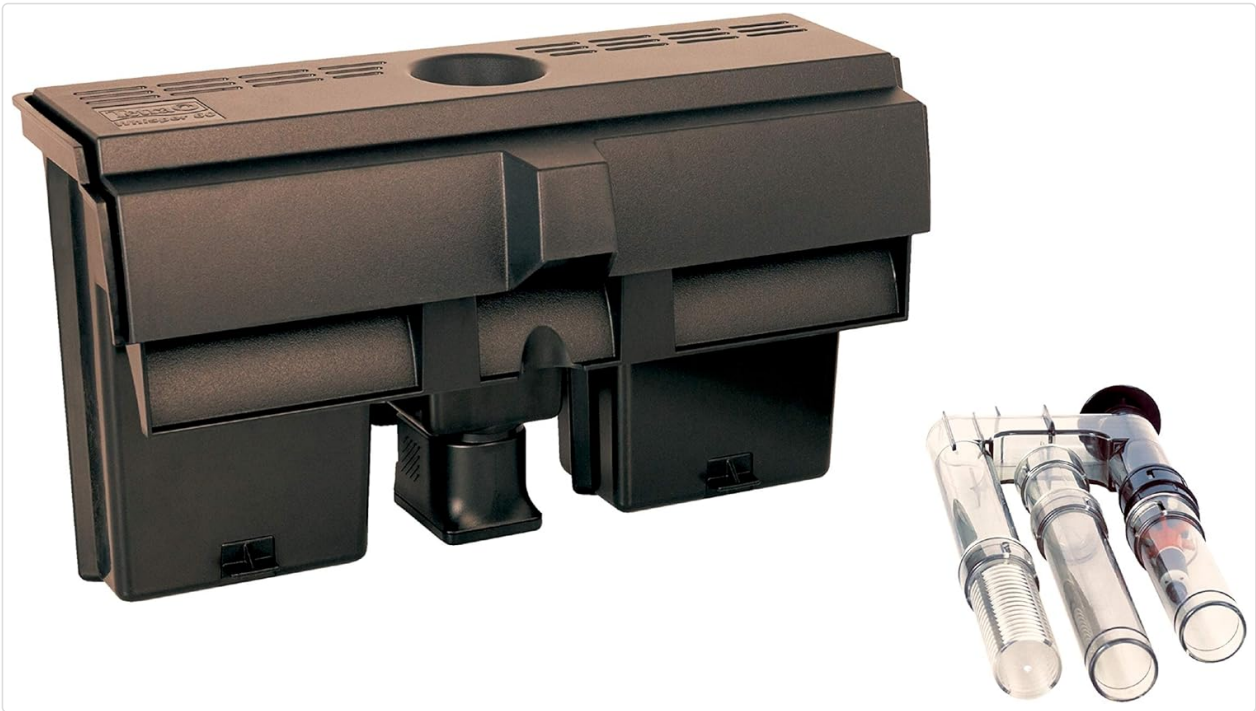


Figure 3: The Tetra Whisper Power Filter unit and its intake components.

OPERATION

The Tetra Whisper Power Filter operates continuously to maintain water quality. Key operational aspects include:

- **Continuous Filtration:** The filter is designed to run 24/7 to provide consistent mechanical, chemical, and biological filtration.
- **Flow Control:** Many larger Whisper filters include an adjustable flow control knob. This allows you to reduce the water flow, which can be beneficial during feeding times or for fish species that prefer less water movement, such as Bettas.
- **Self-Priming (after initial setup):** The design of the intake tube and housing helps the filter maintain its prime, allowing it to restart reliably after a power interruption without manual re-priming, provided the water level is adequate.



Figure 4: The Tetra Whisper Power Filter, ready for operation.

MAINTENANCE

Regular maintenance ensures optimal performance and longevity of your filter:

- **Cartridge Replacement:** Change Tetra Whisper Bio-Bag Cartridges monthly. These cartridges trap particles and contain Ultra-Activated carbon for chemical filtration.
- **Impeller Cleaning:** At least every six to twelve months, remove the impeller and clean its well with a small brush to remove any accumulated debris. This helps maintain quiet operation and efficient water flow.
- **Intake Tube Cleaning:** Periodically clean the intake tube to prevent blockages and ensure proper water flow into the filter.
- **Water Level:** Always ensure your aquarium water level is topped off. Low water levels can prevent the filter from restarting properly after a power interruption.

Your browser does not support the video tag.

Video 1: An overview of the Tetra Whisper Power Filter, demonstrating its features and operation. This video is provided by the manufacturer.

TROUBLESHOOTING

If you encounter issues with your Tetra Whisper Power Filter, consider the following common solutions:

- **Noisy Operation:**
 - Ensure the intake tube is fully and properly inserted into the main housing, supporting the impeller's upper bearing. An improperly seated tube can cause vibration and noise.
 - Check the impeller for debris or wear. Remove and clean the impeller and its well. Some users have noted that rough edges on the impeller's plastic components can cause noise; carefully trimming these edges may resolve the issue.
 - Verify that the filter is filled with water before plugging it in. Running dry can cause noise and damage.
- **Reduced Water Flow:**

- Inspect the filter cartridge for clogging. Replace the Bio-Bag Cartridge if it appears dirty or restricted.
- Inspect the intake tube for blockages from debris or substrate. Ensure there is adequate space between the intake and the aquarium bottom.
- Clean the impeller and its housing for any obstructions.

- **Filter Not Restarting After Power Interruption:**

- Ensure the aquarium water level is sufficiently high. The filter needs to be submerged to maintain its prime and restart.
- Re-prime the filter by filling the housing with aquarium water before plugging it back in.

- **Leaking from Filter:**

- Inspect the O-ring between the motor housing and the main filter body. If it is dry, shrunk, or damaged, it may cause leaks. Replacing the O-ring or carefully wrapping it with Teflon tape (if slightly shrunk) can resolve this.
- Ensure all connections and components are securely fitted.

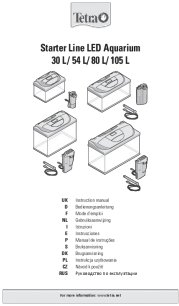





SPECIFICATIONS

Feature	Detail
Model Name	Whisper Power Filter
Item Model Number	25775
Aquarium Size Capacity	Up to 60-Gallons
Filtration Stages	3 (Mechanical, Chemical, Biological)
Filter Cartridge Type	Tetra Whisper Bio-Bag Cartridges (Size Large)
Item Weight	3 Pounds
Product Dimensions (LxWxH)	5.81 x 13.63 x 7.88 inches
Material	Plastic
Manufacturer	Tetra
Country of Origin	China

WARRANTY AND SUPPORT

The Tetra Whisper Power Filter comes with a **2-Year Limited Warranty**. For warranty claims, technical assistance, or further product information, please refer to the contact details provided on the product packaging or visit the official Tetra website.

Tetra has been a trusted brand in fishkeeping since 1951, providing comprehensive knowledge and solutions for aquarists.

	<p>Tetra Starter Line LED Aquarium User Manual</p> <p>Comprehensive user manual for the Tetra Starter Line LED Aquarium series (30 L, 54 L, 80 L, 105 L), covering setup, safety, operation, and maintenance. Includes multilingual instructions.</p>
	<p>Tetra Whisper Internal Power Filter: User Manual and Safety Guide</p> <p>Comprehensive guide for the Tetra Whisper Internal Power Filter, covering installation, maintenance, troubleshooting, safety instructions, and warranty information for models 10i, 20i, and 40i.</p>
	<p>Tetra Air Pump: Safety, Setup, and Warranty Information</p> <p>Comprehensive guide for the Tetra Air Pump, including important safety instructions, quick setup steps, parts identification, maintenance, and warranty details for aquarium use.</p>
	<p>Tetra EX 500/700/1000/1500 Plus Filter-Set Instructions</p> <p>Comprehensive instructions for the safe and effective use of Tetra EX 500, 700, 1000, and 1500 Plus external aquarium filter sets. Includes setup, operation, maintenance, troubleshooting, and technical specifications.</p>
	<p>Tetra Internal Power Filter: User Manual, Safety, and Setup Guide</p> <p>Comprehensive guide for the Tetra Internal Power Filter (models 5-10i, 10-30i, 20-40i) including setup instructions, safety precautions, troubleshooting tips, maintenance, and warranty information.</p>
	<p>Tetra Test 6in1 Aquarium Water Test Strips Instructions</p> <p>Comprehensive guide on using Tetra Test 6in1 strips to measure key aquarium water parameters including Nitrite, Nitrate, pH, General Hardness (GH), Carbonate Hardness (KH), and Chlorine. Learn how to interpret results and maintain optimal water quality for freshwater fish.</p>

