

Manuals+

[Q & A](#) | [Deep Search](#) | [Upload](#)

manuals.plus /

- › [Panasonic](#) /
- › [Panasonic WhisperCeiling FV-30VQ3 Bathroom Exhaust Fan Instruction Manual](#)

Panasonic FV-30VQ3

Panasonic WhisperCeiling FV-30VQ3 Bathroom Exhaust Fan Instruction Manual

Model: FV-30VQ3 | Brand: Panasonic

INTRODUCTION



Figure 1: The Panasonic WhisperCeiling FV-30VQ3 Bathroom Exhaust Fan.

This manual provides detailed instructions for the safe and efficient installation, operation, and maintenance of your Panasonic WhisperCeiling FV-30VQ3 Bathroom Exhaust Fan. Please read this manual thoroughly before beginning installation or use, and retain it for future reference.

The Panasonic WhisperCeiling FV-30VQ3 is a 290 CFM ceiling-mounted ventilation fan designed for continuous, trouble-free operation. It features a totally enclosed condenser motor and a double-tapered, dolphin-shaped bladed blower wheel for quiet air movement. This Energy Star qualified fan includes a built-in damper to prevent backdraft and is constructed with heavy-gauge zinc galvanized steel for rust protection.

SAFETY INFORMATION

Adhering to these safety guidelines is crucial for preventing injury and ensuring proper operation of the fan.

- Always disconnect power at the circuit breaker before installing, cleaning, or servicing the fan. Failure to do so can result in electric shock or serious injury.
- Installation must comply with all local electrical and building codes. If you are unfamiliar with electrical wiring or building practices, consult a qualified electrician or contractor.
- Ensure the fan is properly grounded to prevent electrical shock.
- This fan is intended for general ventilating use only. Do not use it to exhaust hazardous or explosive materials and vapors.
- Do not use this fan in a kitchen or in areas where it may be exposed to excessive grease, as this can lead to fire hazards and reduced fan performance.
- Wear appropriate personal protective equipment, such as safety glasses and gloves, during installation and maintenance.
- Keep children and pets away from the work area during installation and ensure the fan is inaccessible to them during operation.
- Do not insert fingers or foreign objects into the fan grille while the fan is operating.

PACKAGE CONTENTS

Carefully unpack the box and verify that all the following components are included. If any parts are missing or damaged, do not proceed with installation and contact your retailer or Panasonic customer support.

- Fan Housing Assembly (includes motor and blower wheel)
- Vent Cover (Grille)
- Installation Instructions Manual
- Flex-Z-Fast™ Bracket (Adjustable mounting bracket)
- Hardware for installation (screws, wire connectors, etc.)

Panasonic

**Flex-ZFast™
BRACKET**



**MOTOR
& FAN**

**VENT
COVER**

Figure 2: Exploded view showing the main components: Flex-ZFast™ bracket, motor and fan unit, and the vent cover.

INSTALLATION

The Panasonic WhisperCeiling FV-30VQ3 is designed for user-friendly installation, fitting into 2" x 8" construction. It features detachable adaptors, firmly secured duct ends, and a fan/motor unit that detaches easily from the housing.

Tools and Materials Required (Not Included):

- Screwdriver (Phillips and flathead)
- Drill with appropriate bits
- Measuring Tape
- Utility Knife or Drywall Saw
- Ducting (6-inch diameter, rigid or flexible)
- Duct tape or clamps for sealing connections
- Electrical wire (appropriate gauge for circuit) and wire connectors

- Safety glasses and work gloves
- Optional: 2x4 lumber for framing (for certain installations)

Installation Steps:

1. **Prepare the Installation Area:** Turn off power to the installation area at the circuit breaker. Determine the exact location for the fan. Ensure there is adequate space (minimum 2" x 8" construction) and clearance above the ceiling for the fan housing and ductwork. Mark the ceiling for the fan opening according to the dimensions provided in the detailed installation manual.
2. **Create Ceiling Opening:** Carefully cut the marked opening in the ceiling using a utility knife or drywall saw.
3. **Mount the Fan Housing:** The fan includes a double hanger-bar system (Flex-Z-Fast™ bracket) that is expandable up to 24 inches, allowing for flexible positioning between ceiling joists. Securely attach this bracket to the joists. The fan housing then slides onto and is secured to this bracket. For some installations, particularly in existing construction, it may be necessary to construct a wooden frame (e.g., from 2x4s) to provide robust support for the fan housing.
4. **Connect Ductwork:** Attach the 6-inch diameter ducting to the fan's exhaust port. Ensure all duct connections are tightly sealed using duct tape or clamps to prevent air leakage and maintain optimal ventilation efficiency. The fan features a built-in damper to prevent cold air or outside elements from entering when the fan is off.
5. **Perform Electrical Wiring:** Route electrical wiring to the fan's junction box. Connect the fan's wiring to the household electrical supply according to the wiring diagram in the full instruction manual and all applicable local electrical codes. Ensure all connections are secure and properly insulated with wire connectors.
6. **Install Fan/Motor Unit:** The fan and motor unit is designed to detach easily from the housing for simpler installation. Once the housing is mounted, ducting connected, and electrical wiring completed, carefully insert and secure the fan/motor unit back into the housing.
7. **Attach Vent Cover:** Finally, attach the white vent cover (grille) to the fan housing. The cover is designed to snap or screw into place, providing a finished appearance.

EASY TO INSTALL:

The double
hanger-bar
system
(expandable
up to 24 in.)
is ideal for
positioning
the fan
exactly where
you want it

Panasonic

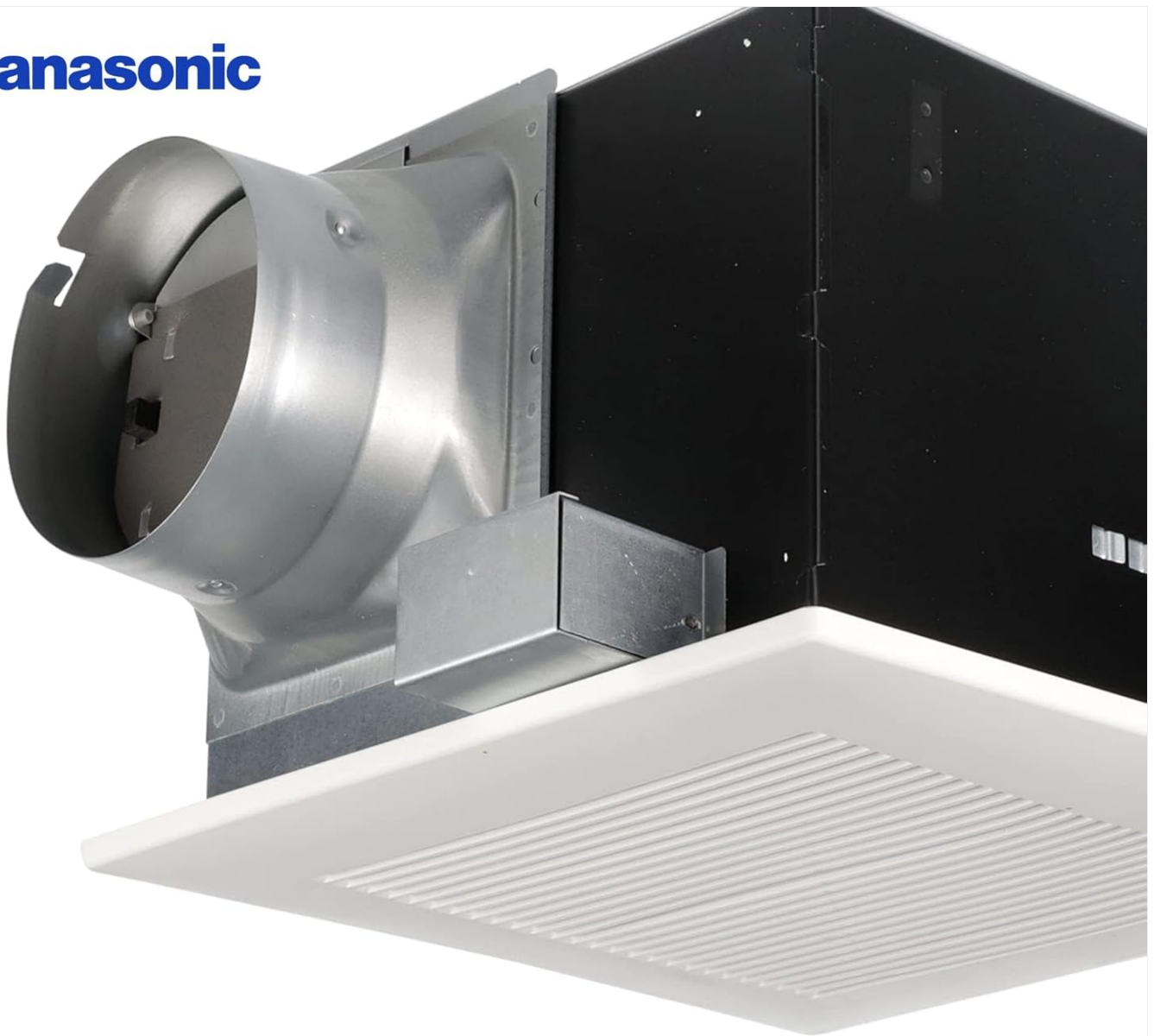


Figure 3: The double hanger-bar system (expandable up to 24 inches) facilitates precise fan positioning.

OPERATING INSTRUCTIONS

The Panasonic WhisperCeiling FV-30VQ3 fan is designed for straightforward operation, typically controlled by a standard wall switch (not included) connected during installation.

- **Turning On:** To activate the fan, simply flip the wall switch connected to the fan to the "ON" position. The fan will immediately begin to operate, exhausting air from the room.
- **Turning Off:** To deactivate the fan, flip the wall switch to the "OFF" position. The fan will cease operation.
- **Continuous Operation:** This fan is engineered for continuous operation to effectively manage humidity and improve indoor air quality in bathrooms, laundry rooms, or garages. Running the fan for an extended period after showering or using the room is recommended to ensure proper ventilation.



WHISPERCEILING VENTILATION FAN

select speed 290 CFM

Figure 4: The fan grille is the visible part of the fan, through which air is exhausted.

MAINTENANCE

Regular and proper maintenance will ensure your Panasonic WhisperCeiling FV-30VQ3 fan operates efficiently and extends its lifespan. Always ensure the power is disconnected at the circuit breaker before performing any maintenance procedures.

- **Cleaning the Vent Cover (Grille):**

- Periodically (e.g., every 3-6 months), gently pull down or unclip the vent cover from the fan housing.
- Wash the cover with a mild detergent and warm water. For stubborn dirt, a soft brush can be used.
- Rinse thoroughly and allow the cover to air dry completely before reattaching it to the fan housing.

- **Cleaning the Fan Blades and Interior:**

- With the vent cover removed and power disconnected, carefully reach into the fan housing.
- Gently wipe the fan blades and the interior surfaces of the housing with a damp cloth to remove any accumulated dust, lint, or debris. Avoid using excessive water.

- Ensure all components are dry before restoring power.
- **Motor Lubrication:** The fan features permanently lubricated motors, which do not require any additional lubrication throughout their operational life. Attempting to lubricate the motor may void the warranty.
- **Housing Inspection:** The fan housing is made of heavy-gauge zinc galvanized steel and painted to protect it from rust. Periodically inspect the housing for any signs of damage or corrosion. Clean the exterior as needed with a damp cloth.

TROUBLESHOOTING

If you encounter any issues with your Panasonic WhisperCeiling FV-30VQ3 fan, refer to the following common troubleshooting steps before contacting customer support.

- **Fan Not Operating:**
 - **Check Power Supply:** Ensure the circuit breaker for the fan is not tripped. Reset it if necessary.
 - **Verify Wall Switch:** Confirm that the wall switch controlling the fan is in the "ON" position.
 - **Inspect Wiring:** If comfortable and qualified, carefully check the electrical connections at the fan's junction box and the wall switch for any loose or disconnected wires (ensure power is OFF at the breaker first).
- **Reduced Airflow or Ineffective Ventilation:**
 - **Clean Grille and Blades:** Dust and lint accumulation on the vent cover and fan blades can significantly reduce airflow. Refer to the "Maintenance" section for cleaning instructions.
 - **Check Ductwork:** Inspect the ducting for any obstructions, kinks, or disconnections that might impede airflow. Ensure all duct connections are properly sealed.
 - **Verify Damper Operation:** Ensure the built-in backdraft damper is not stuck or obstructed, allowing air to flow freely.
- **Excessive Noise or Vibration:**
 - **Secure Mounting:** Ensure the fan housing and mounting bracket are securely fastened to the ceiling joists and not vibrating against surrounding structures.
 - **Check for Loose Components:** With power disconnected, inspect the fan/motor unit for any loose screws or components.
 - **Clean Fan Blades:** Debris on fan blades can cause imbalance and noise. Clean the blades as described in the "Maintenance" section.
 - **Ductwork Noise:** Ensure ductwork is properly supported and not vibrating.

If these troubleshooting steps do not resolve the issue, it is recommended to contact Panasonic customer support or a qualified service technician for further assistance.

SPECIFICATIONS

Brand	Panasonic
Model Name	WhisperCeiling Bathroom Exhaust Fan, 290 CFM, FV-30VQ3
Part Number	FV-30VQ3
Air Flow Capacity	290 Cubic Feet Per Minute (CFM)
Noise Level	2 Sones
Power Source	Corded Electric
Voltage	120 Volts

Wattage	64 Watts
Product Dimensions	19.01"D x 15.98"W x 12.51"H
Item Weight	4 Pounds
Duct Size	6 inches
Mounting Type	Ceiling Mount
Special Feature	Energy Star Certified
Motor Type	Brushless
Room Type	Bathroom, Garage, Laundry Room

Dimensions

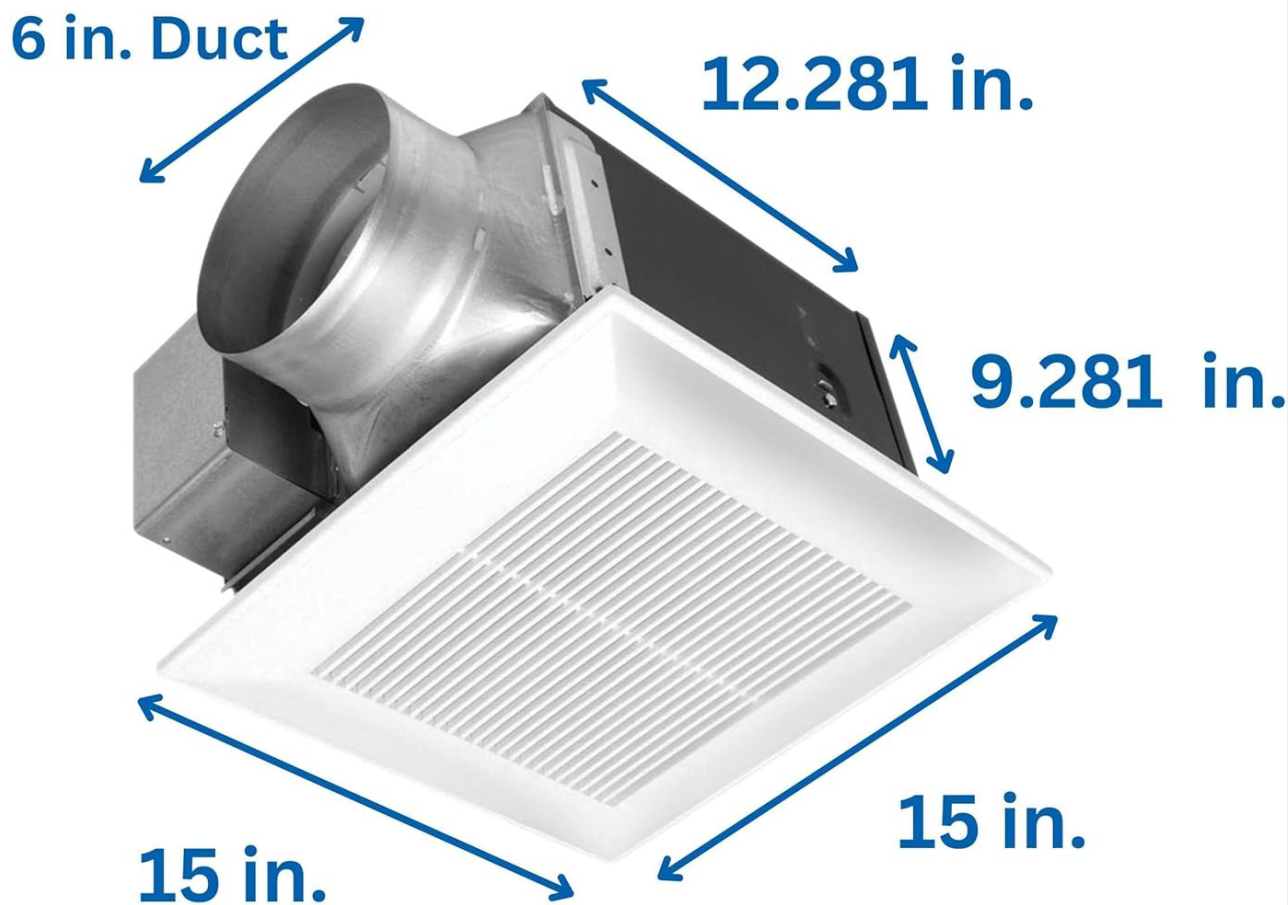


Figure 5: Dimensional diagram of the fan unit, including depth, width, height, and duct size.

WARRANTY AND SUPPORT

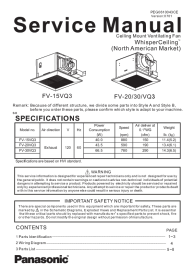
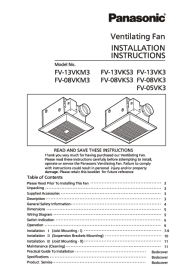

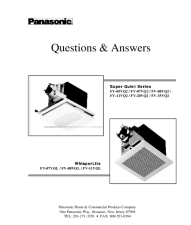
The Panasonic WhisperCeiling FV-30VQ3 Bathroom Exhaust Fan comes with the following manufacturer's warranty, effective from the date of original purchase:

- **All Parts:** For a period of 3 years (36 months).
- **DC Motor:** For a period of 6 years (72 months).

For technical support, warranty claims, or further assistance, please refer to the contact information provided in the original product packaging or visit the official Panasonic website for the most up-to-date support resources.



Related Documents - FV-30VQ3

<div></div>	<p>Panasonic WhisperCeiling Ventilating Fan Service Manual (FV-15VQ3, FV-20VQ3, FV-30VQ3)</p> <p>Detailed service manual for Panasonic WhisperCeiling™ Ceiling Mount Ventilating Fans, models FV-15VQ3, FV-20VQ3, and FV-30VQ3. Includes specifications, parts identification, wiring diagrams, and parts lists.</p>
<div></div>	<p>Panasonic Ventilating Fan Installation Instructions</p> <p>Comprehensive installation instructions for Panasonic WhisperGreen ventilating fans, covering models FV-13VKM3, FV-08VKM3, FV-13VKS3, FV-08VKS3, FV-13VK3, FV-08VK3, and FV-05VK3. Includes safety information, dimensions, wiring diagrams, operation details, and maintenance guidelines.</p>
<div></div>	<p>Panasonic Ventilation Solutions: High-Performance Fans for Indoor Air Quality</p> <p>Discover Panasonic's comprehensive range of high-performance, energy-efficient ventilation fans and indoor air quality solutions. This catalog details product lines like WhisperGreen, WhisperSense, and WhisperLine, highlighting key benefits, features, specifications, and installation guidance for creating healthier, more comfortable living and working environments.</p>
<div></div>	<p>Panasonic Ventilation Fans: Questions & Answers, Features, and Selection Guide</p> <p>Comprehensive FAQ and guide for Panasonic WhisperLite and Super Quiet Series ventilation fans, covering quiet operation, energy efficiency, durability, installation, and sizing.</p>



[Panasonic Ventilating Fan Installation Instructions FV-05VFL2, FV-08VFL2, FV-11VFL2](#)

Comprehensive installation instructions for Panasonic Ventilating Fans models FV-05VFL2, FV-08VFL2, and FV-11VFL2. Covers supplied accessories, description, wiring diagrams, dimensions, specifications, unpacking, general safety information, and detailed installation steps for various mounting types including joist, I-joist, between joist, wooden header, and existing construction. Also includes maintenance procedures for cleaning and lamp replacement, a practical guide to installation, and product service information.



[Panasonic Ventilating Fan Installation and Operating Instructions](#)

This document provides comprehensive instructions for the installation, operation, and maintenance of Panasonic Ventilating Fan models. It includes essential safety warnings, installation guidelines, maintenance tips, and detailed specifications to ensure proper and safe use of the product.