

Grizzly G4015Z

Grizzly Industrial G4015Z Combo Lathe/Mill Instruction Manual

Model: G4015Z

1. INTRODUCTION

This manual provides essential instructions for the safe operation, setup, maintenance, and troubleshooting of your Grizzly Industrial G4015Z Combo Lathe/Mill. Please read this manual thoroughly before operating the machine to ensure proper usage and to prevent injury or damage.

The Grizzly G4015Z is a versatile machine designed for both turning (lathe) and milling operations, suitable for various metalworking tasks. Understanding its components and functions is crucial for effective and safe use.

2. SAFETY INSTRUCTIONS

Operating any power tool, especially a combo lathe/mill, requires strict adherence to safety protocols. Failure to follow these instructions can result in serious injury or death.

- **Read the Entire Manual:** Understand all warnings, instructions, and procedures before operating the machine.
- **Wear Eye Protection:** Always wear ANSI-approved safety glasses or a face shield.
- **Wear Appropriate Clothing:** Avoid loose clothing, gloves, ties, rings, bracelets, and other jewelry that can get caught in moving parts. Tie back long hair.
- **Maintain a Clean Work Area:** Keep the work area free of clutter, oil, and debris. Ensure adequate lighting.
- **Ensure Proper Electrical Connection:** Connect the machine to a properly grounded 110V electrical outlet. Do not bypass safety switches.
- **Secure Workpiece:** Always ensure the workpiece is securely clamped in the chuck or vise before starting any operation.
- **Use Correct Tools:** Use only sharp, correctly sized, and appropriate cutting tools for the material being worked.
- **Never Leave Machine Unattended:** Turn off the machine and disconnect power before leaving the work area.
- **Emergency Stop:** Familiarize yourself with the location and operation of the emergency stop button.
- **Machine Stability:** Ensure the machine is securely mounted to a stable workbench or stand to prevent tipping or movement during operation.

3. SETUP AND INSTALLATION

Proper setup is critical for the performance and safety of your G4015Z Combo Lathe/Mill.

3.1 Unpacking and Inspection

Carefully unpack the machine and all accessories. Inspect for any shipping damage. Report any damage to the carrier and Grizzly Industrial immediately. Retain all packaging materials for potential returns.

3.2 Location and Mounting

Select a location with sufficient space around the machine for safe operation and maintenance. The machine weighs approximately 470 pounds, so a sturdy, level workbench or stand is essential. Secure the machine to the surface using appropriate fasteners to prevent movement.

Ensure the area has adequate lighting and ventilation. Avoid locations with excessive dust, humidity, or extreme temperatures.

3.3 Electrical Connection

The G4015Z operates on 110 Volts and draws 957 watts (0.75 HP motor). Connect the machine to a dedicated, grounded 110V circuit with an appropriate circuit breaker. Do not use extension cords unless absolutely necessary, and if used, ensure they are heavy-duty and rated for the machine's power requirements.



Figure 1: Overall view of the Grizzly G4015Z Combo Lathe/Mill, showing its combined lathe bed and milling head.

4. OPERATING INSTRUCTIONS

This section outlines the basic operational procedures for both the lathe and mill functions of the G4015Z.

4.1 Lathe Operations

The lathe function is used for turning, facing, drilling, and threading cylindrical workpieces.

1. **Workpiece Mounting:** Securely mount the workpiece in the 3-jaw chuck or between centers. Ensure it runs true.
2. **Tool Selection and Setup:** Select the appropriate cutting tool for the material and operation. Mount the tool in the tool post, ensuring it is centered to the workpiece.
3. **Speed Selection:** Adjust the spindle speed according to the material and cutting tool. Refer to the speed chart (if provided on the machine or in a separate document).
4. **Feed Engagement:** Engage the appropriate feed rate for automatic cutting, or use manual feed for precise control.
5. **Cutting:** Slowly bring the cutting tool into contact with the workpiece. Monitor the cut and adjust as necessary.

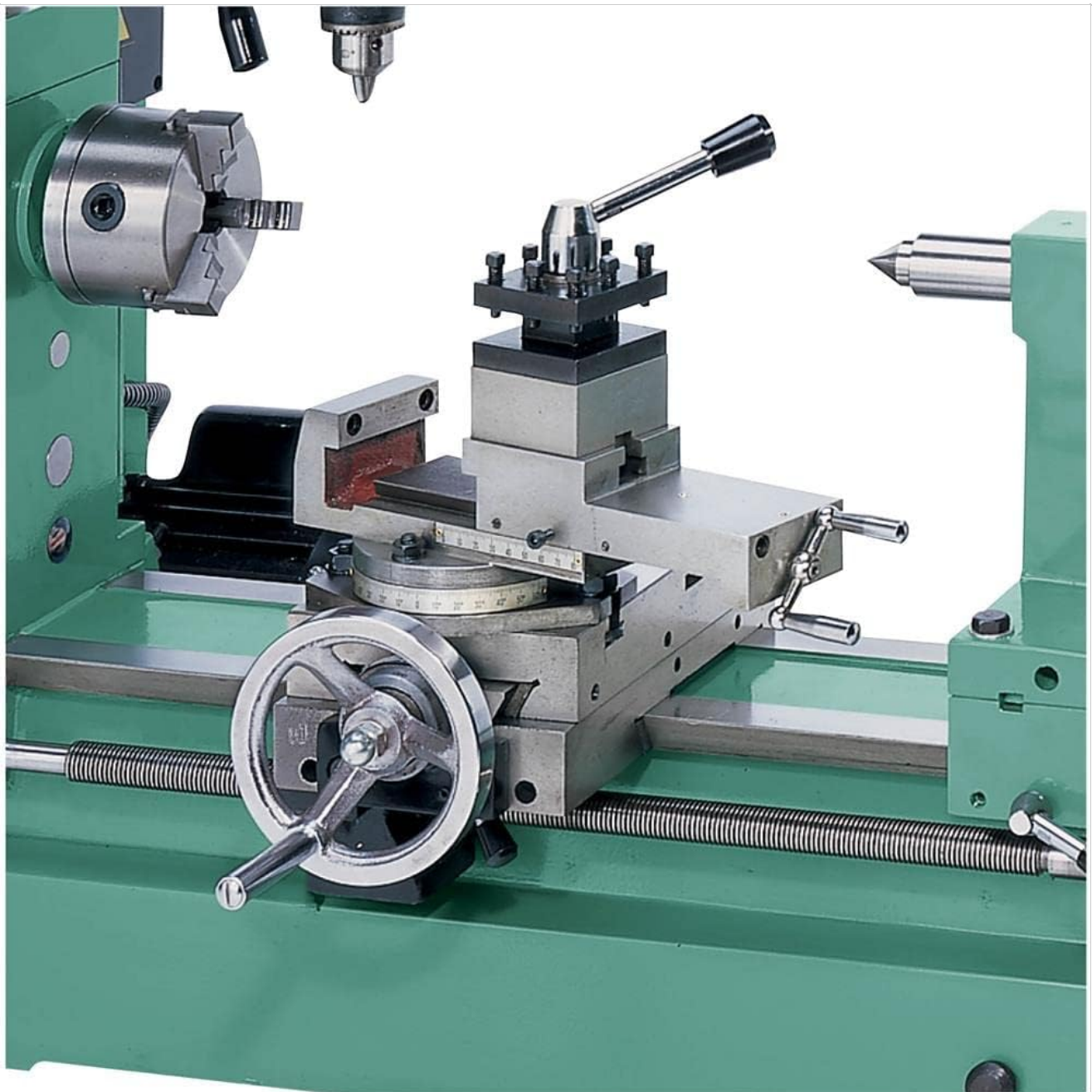


Figure 2: Close-up of the lathe carriage, cross-slide, and tool post, showing the controls for precise material removal.

4.2 Milling Operations

The milling function allows for drilling, end milling, and face milling operations on flat or irregularly shaped

workpieces.

1. **Workpiece Clamping:** Securely clamp the workpiece to the milling table using a vise or T-slot clamps.
2. **Cutter Installation:** Install the appropriate end mill or drill bit into the milling head's chuck or collet.
3. **Head Adjustment:** Adjust the milling head height and angle as required for the operation.
4. **Speed Selection:** Set the spindle speed based on the cutter diameter and workpiece material.
5. **Milling:** Use the X, Y, and Z axis handwheels to position the workpiece and feed the cutter. Take light cuts to avoid overloading the machine.



Figure 3: Detailed view of the milling head, showing the quill feed handles and depth adjustment mechanism.



Figure 4: Top view of the milling head, illustrating the belt drive system for changing spindle speeds.

5. MAINTENANCE

Regular maintenance ensures the longevity and optimal performance of your G4015Z.

- **Cleaning:** After each use, clean the machine thoroughly, removing chips, dust, and coolant residue. Use a brush or shop vacuum; avoid compressed air as it can force debris into bearings.
- **Lubrication:** Regularly lubricate all moving parts, including lead screws, ways, and gears, according to the lubrication points indicated in the machine's specific diagram (refer to the full manual for detailed points). Use recommended machine oil or grease.
- **Belt Tension:** Check and adjust the tension of drive belts periodically. Loose belts can cause slippage and loss of power.
- **Adjustments:** Periodically check for and adjust any play or backlash in the lead screws, gibs, and bearings.
- **Electrical Inspection:** Inspect electrical cords and connections for damage. Ensure all safety switches are functioning correctly.

6. TROUBLESHOOTING

This section provides solutions to common operational issues. For complex problems, contact Grizzly Industrial technical support.

Problem	Possible Cause	Solution
Machine does not start	No power, emergency stop engaged, faulty switch	Check power supply, reset emergency stop, inspect wiring.

Problem	Possible Cause	Solution
Excessive vibration/noise	Loose mounting, unbalanced workpiece, dull cutting tool, worn bearings	Secure machine, balance workpiece, sharpen/replace tool, inspect bearings.
Poor surface finish	Dull tool, incorrect speed/feed, machine chatter, excessive tool overhang	Sharpen tool, adjust speed/feed, reduce tool overhang, check machine rigidity.
Milling head loses rigidity	Loose gibs, worn components, quill extended too far	Adjust gibs, inspect for wear, minimize quill extension.

7. SPECIFICATIONS

Key technical specifications for the Grizzly Industrial G4015Z Combo Lathe/Mill:

- **Model:** G4015Z
- **Brand:** Grizzly Industrial
- **Motor:** 3/4 HP
- **Voltage:** 110 Volts
- **Wattage:** 957 watts
- **Item Weight:** 470 pounds
- **Product Dimensions:** 23 x 41 x 39 inches (Length x Width x Height)
- **Global Trade Identification Number (GTIN):** 00690550740152
- **UPC:** 690550740152
- **Included Components:** Tools (as supplied by manufacturer)

8. WARRANTY AND SUPPORT

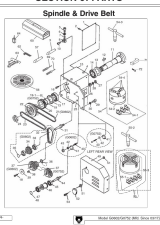
For warranty information, technical assistance, or to order replacement parts, please contact Grizzly Industrial directly. Refer to your purchase documentation or the official Grizzly Industrial website for the most current warranty terms and contact details.

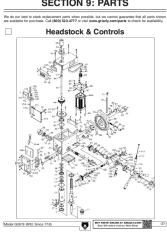



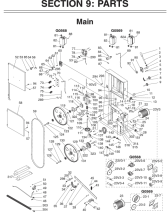
Grizzly Industrial Contact Information:

Website: www.grizzly.com

Customer Service: Refer to the website for current phone numbers and email contacts.

Related Documents - G4015Z

 <p>SECTION 9: PARTS Spindle & Drive Belt</p>	<p>Grizzly G0752 Lathe Parts List and Diagrams</p> <p>Comprehensive parts list and diagrams for the Grizzly G0752 Variable-Speed Lathe, covering all major components including the spindle, apron, tailstock, gearbox, and motor.</p>
--	--

	<p>Grizzly G0619 Parts List: Headstock, Column, Table, Inverter & Labels</p> <p>Comprehensive parts list for the Grizzly G0619 Deluxe Small Mill/Drill. Includes detailed diagrams and part numbers for headstock, controls, column, table, inverter, and cosmetic labels. Essential for maintenance and replacement parts.</p>
	<p>Grizzly Charcoal Oven Instruction Manual</p> <p>Comprehensive instruction manual for the Grizzly Charcoal Oven, covering safety guidelines, operation, cleaning, cooking techniques, pellet burner use, trolley assembly, and warranty information.</p>
	<p>Grizzly G0942/G0943 Extreme-Series Air Compressors Owner's Manual</p> <p>Comprehensive owner's manual for Grizzly G0942 and G0943 Extreme-Series Air Compressors. Includes safety, setup, operation, maintenance, troubleshooting, and parts information.</p>
	<p>Grizzly G0674 12" Sliding Table Saw Owner's Manual</p> <p>Comprehensive owner's manual for the Grizzly G0674 12" Sliding Table Saw. Includes setup guides, operating instructions, maintenance procedures, safety warnings, parts breakdown, and troubleshooting tips.</p>
	<p>Grizzly G0568/G0569 Bandsaw Parts List and Diagrams</p> <p>Comprehensive parts list, diagrams, and label placement guide for Grizzly Industrial G0568 and G0569 bandsaws. Includes detailed part numbers and descriptions for all components, essential for maintenance and repair.</p>



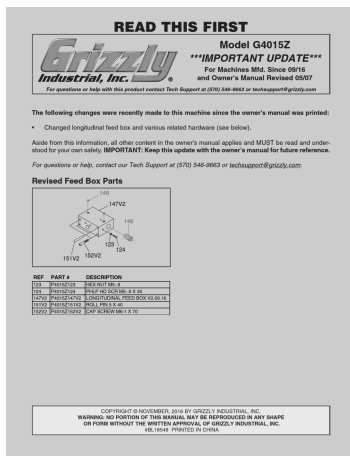
[\[pdf\]](#) User Manual Owner's Manual Instructions Catalog

19 3 16 in Combo Lathe Mill Use and Care Manual Grizzly Industrial G4015Z 690550740152

0690550740152 1004536489 6f84a09f e4de 4f77 b263 eb93012c845d images thdstatic catalog Images 6f |||

MODEL **G4015Z** COMBINATION LATHE/MILL OWNER S MANUAL COPYRIGHT MARCH, 2002 BY GRIZZLY INDUSTRIAL, INC. REVISED APRIL, 2018 HE WARNING: NO PORTION OF THIS MANUAL MAY BE REPRODUCED IN ANY SHAPE OR FORM WITHOUT THE WRITTEN APPROVAL OF GRIZZLY INDUSTRIAL, INC. #DD3737 PRINTED IN CHINA This manual pro...

lang:en score:41 filesize: 2.88 M page_count: 62 document date: 2019-04-03



[\[pdf\]](#) User Manual Owner's Manual

Manual Grizzly Industrial The MaxiiCopper Model Vi2401 is a revolutionary data transmission MANUAL

G4015Z Combo Lathe Mill chainsawjournal wpengine netdna ssl 2018 09 Read this first OWNER S Since 16

and Owner s Revised 05 07 For questions or help with product contact Tech Support at 570 546 9663

techsupport@grizzly changes since owner manual was printed Feed rate threading chart Change gears

included machine document replaces information in the

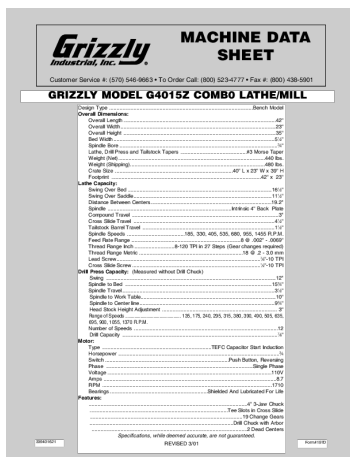
READ THIS FIRST Model **G4015Z** ***IMPORTANT UPDATE*** For Machines Mfd.

Since 09/16 and Owner s Manual Revised 05/07 For questions or help with this product

contact Tech Support at 570 546-9663 or techsupport grizzly.com The following

changes were recently made to this machine since the owner s man...

lang:en score:41 filesize: 6.78 M page_count: 64 document date: 2017-02-07



[\[pdf\]](#) Datasheet Dimension Guide

G4015Z Spec Sheet Doug grizzly 80 graphics products s

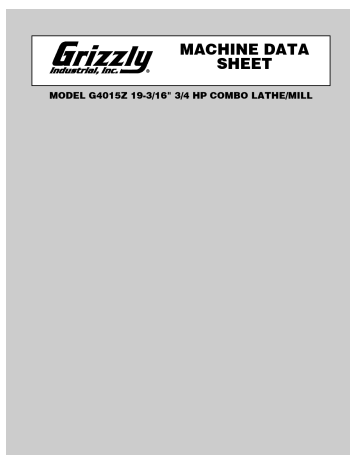
MACHINE DATA SHEET Customer Service #: 570 546-9663 To Order Call: 800 523-

4777 Fax #: 800 438-5901 GRIZZLY MODEL **G4015Z** COMBO LATHE/MILL 339401621

Design TypeBench

Model Overall Dimensio...

lang:en score:32 filesize: 25.86 K page_count: 1 document date: 2001-03-21



[\[pdf\]](#) Specifications Datasheet Dimension Guide

G4015Z Specifications Sheet Grizzly Industrial Inc g4015z ds cdn0 grizzly specsheets

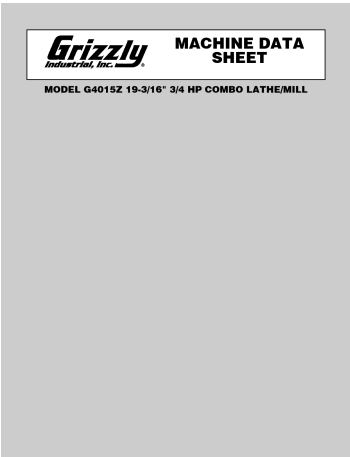
MACHINE DATA SHEET Customer Service #: 570 546-9663 To Order Call: 800 523-

4777 Fax #: 800 438-5901 MODEL **G4015Z** 19-3/16 3/4 HP COMBO LATHE/MILL

Product Dimensions:

Weight.....

lang:de score:32 filesize: 22.33 K page_count: 3 document date: 2021-08-26



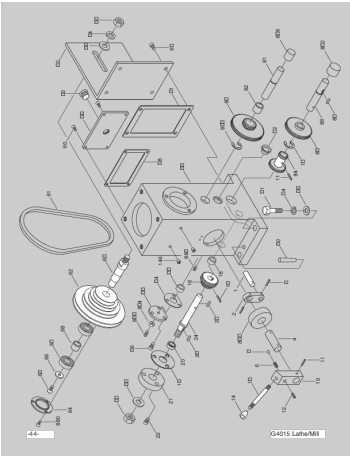
[pdf] Specifications Datasheet Dimension Guide

G4015Z Specifications Sheet Grizzly Industrial Inc MACHINE DATA SHEET cdn2 grizzly The information contained herein is deemed accurate as of 1 19 2022 and represents our most recent product specifications Due to ongoing improvement efforts this may not accurately describe items previously purchased g4015z ds specsheets |||

MACHINE DATA SHEET Customer Service #: 570 546-9663 To Order Call: 800 523-4777 Fax #: 800 438-5901 MODEL **G4015Z** 19-3/16 3/4 HP COMBO LATHE/MILL Product Dimensions:

Weight.....

lang:de score:27 filesize: 22.33 K page_count: 3 document date: 2022-01-24

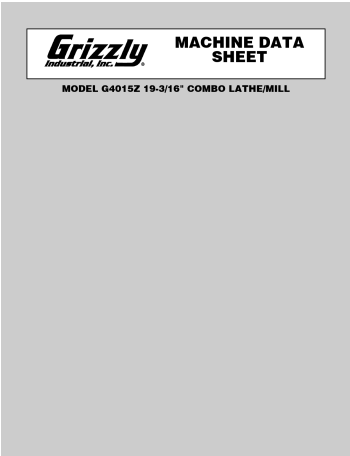


[pdf] Catalog

19 3 16 in Combo Lathe Mill Replacement Part List Grizzly Industrial G4015Z 690550740152 0690550740152 1004536489 6b6efd77 d219 4170 8061 e66bfcec7aec images thdstatic catalog Images 6b |||

RSBOBA RSBOBA -44- 880 64 6 66 6 6001-2 68 S BEA 6001-2 RING CO ING CO S BEAR 62 6 6 8 8 ... END BUSHING 857 P4015Z857 E CLIP 880 PFH07M FLAT HD SCR M5-.8 X 10 883 P4015Z883 SLOTTED SCREW **G4015Z** Lathe/Mill -45- -46- 3 3 37 7 73 30 31 7 6 7 3 1 7 606 7 76 6 77 0 7 7 71 601 ...

lang:i-klngon score:25 filesize: 812.64 K page_count: 14 document date: 2019-04-03



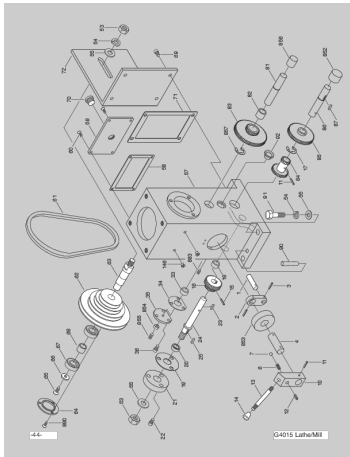
[pdf] Specifications Datasheet Dimension Guide

G4015Z Specifications Sheet Grizzly Industrial Inc MACHINE DATA SHEET The information contained herein is deemed accurate as of 8 21 2018 and represents our most recent product specifications Due to ongoing improvement efforts this may not accurately describe items previously purchased SPEC Combo Lathe Mill chainsawjournal wpengine netdna ssl 09

MACHINE DATA SHEET Customer Service #: 570 546-9663 To Order Call: 800 523-4777 Fax #: 800 438-5901 MODEL **G4015Z** 19-3/16 COMBO LATHE/MILL Product Dimensions:

Weight.....

lang:de score:23 filesize: 22.22 K page_count: 3 document date: 2018-08-22

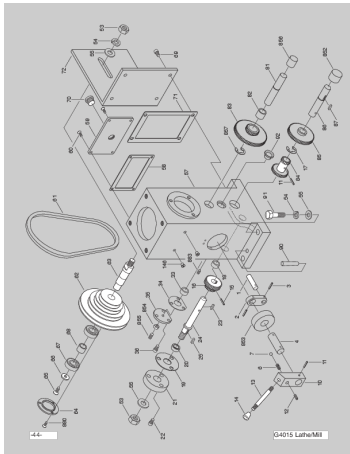


[\[pdf\]](#)

44 G4015 Lathe Mill g4015 lathe mill b o a s e r i n g c 16 146 883 15 18 24 23 20 19 21 22 55 36 855 53 25
64 880 65 66 67 68 62 63 60 70 72 g4015z pl cdn0 grizzly partslists

B B -44- 65 66 67 880 CO 68 64 62 CO BEARING BEARING OBA S OBAS 63 53 55 36
855 854 3 ... END BUSHING 857 P4015Z857 E CLIP 880 PFH07M FLAT HD SCR M5-
.8 X 10 883 P4015Z883 SLOTTED SCREW **G4015Z** Lathe/Mill -45- -46- 30 31 29 28 27
32 49 39 38 73 37 74 41 75 875 26 45 44 606 76...

lang:i-klngon **score:22** filesize: 891.52 K page_count: 14 document date: 2021-07-01

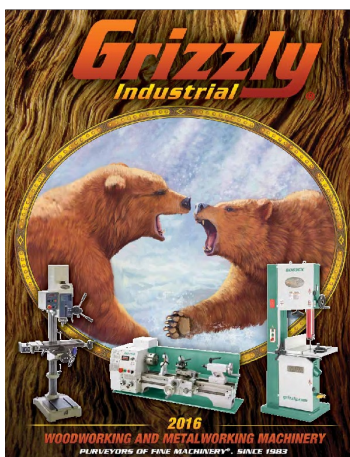


[\[pdf\]](#)

44 G4015 Lathe Mill g4015 lathe mill b o a s e r i n g c 16 146 883 15 18 24 23 20 19 21 22 55 36 855 53 25
64 880 65 66 67 68 62 63 60 70 72 g4015z pl cdn2 grizzly partslists |||

B B -44- 65 66 67 880 CO 68 64 62 CO BEARING BEARING OBA S OBAS 63 53 55 36
855 854 3 ... END BUSHING 857 P4015Z857 E CLIP 880 PFH07M FLAT HD SCR M5-
.8 X 10 883 P4015Z883 SLOTTED SCREW **G4015Z** Lathe/Mill -45- -46- 30 31 29 28 27
32 49 39 38 73 37 74 41 75 875 26 45 44 606 76...

lang:i-klngon **score:22** filesize: 891.79 K page_count: 14 document date: 2021-12-03

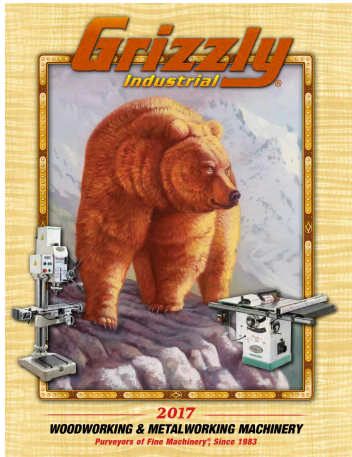


[\[pdf\]](#) Catalog

2016 Grizzly Main Catalog Web cdn0 grizzly catalog main

LETTER FROM THE PRESIDENT Dear Fellow Tool Lovers, 2015 was nonstop action.
Double-digit growth ... drill chuck MT#3 chuck arbor 2 dead centers Change gears 5
backplate 91/2 faceplate Model **G4015Z** 16 x 19 Combo Lathe/Mill only 142500 99
shipping lower 48 states 16 x 31 COMBO LATHE/...

lang:en **score:13** filesize: 98.44 M page_count: 772 document date: 2015-12-08



[\[pdf\]](#) Catalog

2017 Grizzly Main Catalog Web cdn0 grizzly catalog main

2017 WOODWORKING METALWORKING MACHINERY Purveyors of Fine Machinery ,
Since 1983 LETTER FROM TH ... 2 faceplate 1/2 drill chuck MT#3 chuck arbor 2 dead
centers Change gears 5 backplate Model **G4015Z** 16 x 19 Combo Lathe/Mill only 145000
109 shipping lower 48 states 16 x 31 COMBO LATHE...

lang:en score:13 filesize: 103.7 M page_count: 764 document date: 2016-11-17



[\[pdf\]](#) Accessories Catalog

cdn0 grizzly catalog 2019 main Grizzly Main Catalog Web Sawstop price increase going up as dramatically

A PCS36 3hp 36 will being from \$2899 to \$3049 about 5% \$250 for shipping remains unchanged page 27

The has the new prices effective 2 1 19 listed |||

2 019 WOODWORKING METALWORKING MACHINERY Purveyors of Fine Machinery,
Since 1983 LETTER FROM TH ... 2 faceplate 1/2 drill chuck MT#3 chuck arbor 2 dead
centers Change gears 5 backplate Model **G4015Z** 16 x 19 Combo Lathe/Mill only 169500
119 shipping lower 48 states 16 x 31 Combo Lathe...

lang:en score:11 filesize: 135.25 M page_count: 808 document date: 2018-11-27