

Kidde i12040A

Kidde i12040 120V AC Wire-In Smoke Alarm User Manual

Model: i12040A

1. PRODUCT OVERVIEW

The Kidde i12040A is an AC/DC powered, ionization smoke alarm designed to provide early warning of fire. It operates on a 120V power source and includes a 9V battery backup for continuous protection during power outages. This alarm utilizes ionization sensing technology, which is effective at detecting invisible fire particles often associated with fast-flaming fires. It also features a Smart Hush button to temporarily silence nuisance alarms.



Figure 1.1: Front view of the Kidde i12040A Smoke Alarm with its wiring harness.

2. KEY FEATURES

- **Easy Installation:** Features a front battery pull tab for activation without removing the alarm from its mounting bracket. A large mounting base simplifies installation and covers surface imperfections.
- **Pre-stripped Wiring Harness:** Includes an easy-off cap and tinned strands for increased conductivity and wire nut grip, eliminating the need for a stripper tool.
- **User-Friendly Features:** One-button design for easy operation, controlling both Hush and alarm test functions.
- **Battery Run-Down Protection:** Shuts down alarm memory when AC power is absent, reducing low battery chirps.
- **Dust Cover:** Protects the sensor from contaminants during construction, reducing nuisance alarms.
- **Tamper-Resistant Locking Feature:** Deters alarm theft and tampering.
- **Alarm Memory:** Flashes a red LED to indicate which unit was the initiating alarm in an interconnected system.
- **Interconnectable:** Can connect with up to 24 compatible Kidde devices (including smoke, CO, and heat alarms), with up to 18 initiating devices.
- **Battery Backup:** Includes a 9V battery for continued operation during power outages.

- **UL Listed:** Meets Underwriters Laboratories (UL) requirements for safety and performance.



Detects Smoke

- 9V Battery Backup
- Ionization sensor
- Easy Installation
- Interconnectable
- Test/Hush Button



Figure 2.1: Visual representation of the Kidde i12040A's primary features.

3. TECHNICAL SPECIFICATIONS

Specification	Detail
Brand	Kidde
Model Number	i12040A
Power Source	Hardwired (120V AC) with 9V Battery Backup
Sensor Type	Ionization
Color	White
Item Weight	10.9 ounces

Product Dimensions	2 x 6 x 6 inches
Compatible Devices	Up to 24 Kidde devices (18 initiating)
Warranty	5 Year Limited



Over 100 years of innovation



1.55

5.6



5.6

**Hardwired Interconnected Alarm
With 9V Battery Backup**

Figure 3.1: Dimensions of the Kidde i12040A Hardwired Interconnected Alarm.

4. INSTALLATION

4.1. What's in the Box

- One Kidde i12040 120V AC Wire-In Smoke Alarm
- One 9-volt battery
- Operating and installation instructions (this manual)

4.2. Mounting the Alarm

The Kidde i12040A is designed for hardwired installation. Ensure power is OFF at the circuit breaker before

beginning installation.

1. Attach the mounting plate to an electrical junction box on the ceiling or wall. The large mounting base helps cover imperfections and provides a stable surface.



Figure 4.1: The mounting plate for the Kidde i12040A smoke alarm.

2. Connect the alarm's pre-stripped wiring harness to your household wiring. The easy-off cap and tinned strands facilitate secure connections.
3. Insert the included 9V battery into the battery compartment. The front battery pull tab allows for activation without fully dismounting the alarm.
4. Align the alarm with the mounting plate and twist clockwise to secure it in place.
5. Restore power at the circuit breaker. The alarm should chirp once and the LED indicator will flash.



Figure 4.2: Proper installation of the smoke alarm on a ceiling.

4.3. Interconnectivity

This smoke alarm features a smart interconnect system, allowing it to communicate with up to 24 compatible Kidde devices. When one interconnected alarm senses smoke, all connected alarms will sound, providing enhanced warning throughout your home. Refer to the full user manual for detailed instructions on setting up an interconnected system.

5. OPERATION

5.1. Testing the Alarm

It is crucial to test your smoke alarm weekly to ensure proper operation. Press and hold the Test/Hush button on the alarm. The alarm should sound a loud, pulsating alarm. Release the button to stop the alarm. If the alarm does not sound, refer to the Troubleshooting section.

5.2. Smart Hush Feature

The Smart Hush feature allows you to temporarily silence nuisance alarms caused by non-emergency situations, such as cooking smoke. To activate, press the Test/Hush button. The alarm will be desensitized for approximately seven minutes. During this period, the alarm will chirp every 30 to 40 seconds to remind you it is in Hush mode. If smoke density is too high, the Hush feature will be overridden, and the alarm will continue to sound. The alarm automatically resets at the end of the seven minutes.

5.3. Alarm Memory

In an interconnected system, if one alarm triggers the others, the initiating alarm will flash its red LED indicator. This feature helps identify the source of the alarm, which can be useful for troubleshooting or understanding the event.



Figure 5.1: Detail of the alarm's control interface.

6. PLACEMENT GUIDELINES

For optimal protection, install smoke alarms on every level of your home, including the basement. Place alarms inside each bedroom and outside of all sleeping areas. For homes with multiple levels, install an alarm in the hallway or at the top of the stairs on each level. Avoid placing alarms near windows, doors, or air vents where drafts

could interfere with smoke detection. Also, keep alarms at least 10 feet away from cooking appliances to minimize nuisance alarms.

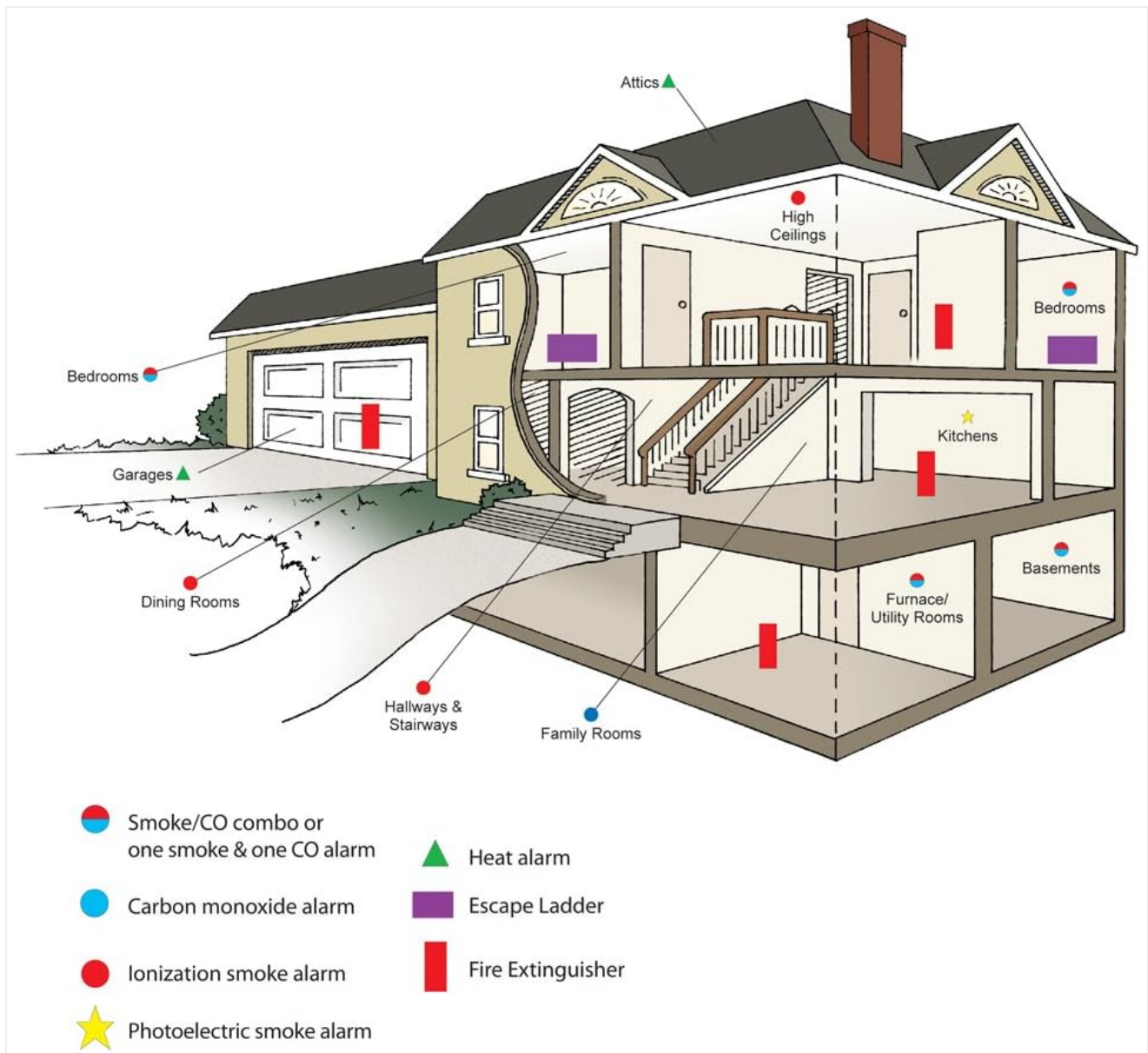


Figure 6.1: Recommended alarm and safety equipment placement throughout a home.

6.1. Fire Preparedness Tips

Understanding fire safety and preparedness is crucial for protecting your home and family. The following video provides general tips on fire preparedness.

Video 6.1: Fire Preparedness Tips. This video offers general advice on home fire safety, including the importance of smoke alarms, fire extinguishers, and emergency planning.

7. MAINTENANCE

7.1. Cleaning Your Alarm

Dust and debris can accumulate on the smoke alarm, potentially affecting its performance. Gently vacuum the alarm's cover and vents monthly using a soft brush attachment. Do not paint the alarm, as this can block the openings and interfere with the sensor.

7.2. Battery Replacement

The 9V battery provides backup power during outages. Replace the battery annually, or immediately if the alarm begins to chirp intermittently (approximately once per minute), indicating a low battery. Use only the specified 9V battery type as recommended by Kidde.

7.3. End-of-Life Replacement

Smoke alarms have a limited lifespan. This Kidde i12040A smoke alarm should be replaced 10 years from the date of manufacture. The manufacturing date is typically printed on the back of the alarm.

8. TROUBLESHOOTING

Problem	Possible Cause	Solution
Alarm chirps intermittently (approx. once per minute)	Low battery	Replace the 9V battery.
Alarm sounds without visible smoke	Nuisance alarm (e.g., cooking smoke, steam, dust)	Press the Hush button to temporarily silence. Ventilate the area. Clean the alarm if dust is suspected.
Alarm does not sound during test	No power, faulty unit, or dead battery	Ensure AC power is on. Check battery. If issues persist, replace the unit.
Alarm LED flashes red after an event	Alarm memory activated (this unit was the initiating alarm)	No action required unless the alarm continues to sound. This is an informational feature.

9. WARRANTY AND SUPPORT

9.1. Limited Warranty

The Kidde i12040A Smoke Alarm comes with a 5-year limited warranty from the date of purchase. This warranty covers defects in materials and workmanship under normal use and service. For full warranty details, please refer to the complete user manual or contact Kidde customer support.

9.2. Further Assistance

For more detailed information, installation diagrams, or troubleshooting steps, please refer to the official User Manual PDF available online or contact Kidde customer support. You can often find the full user manual on the product's support page on the manufacturer's website or via the link provided with your purchase documentation.

[Download Full User Manual \(PDF\)](#)



Comprehensive user guide for Kidde i12020, i12040, and i12080 AC wire-in ionization smoke alarms, covering installation, operation, maintenance, and safety guidelines.



Comprehensive user's guide for the Kidde i12060 AC wire-in ionization smoke alarm with 9V battery backup. Learn about installation, recommended locations, operation, testing, maintenance, and important safety information.



Comprehensive user guide for the Kidde i12060A AC-powered ionization smoke alarm. Learn about installation, operation, maintenance, safety features, and troubleshooting for reliable home fire detection.



Detailed specifications, features, installation guide, and ordering information for the Kidde FIREX KN-COPE-I AC wire-in combination smoke and carbon monoxide alarm. Includes voice warnings, photoelectric smoke sensor, electrochemical CO sensor, battery backup, and interconnectivity.



Detailed information on the Kidde i4618 120V AC wire-in ionization smoke alarm, including features, technical specifications, installation guide, and ordering details. Features battery backup, Hush button, and interconnectivity.



Discover the Kidde P4010ACLEDS-2, a 120V AC wire-in smoke alarm featuring a bright LED strobe, 10-year sealed battery backup, and voice warnings. Designed to meet ADA requirements for the hearing impaired, this photoelectric smoke alarm offers advanced features for home safety.