

Manuals+

[Q & A](#) | [Deep Search](#) | [Upload](#)

manuals.plus /

- › [Wharfedale](#) /
- › [Wharfedale MovieStar 60 6-Speaker System User Manual](#)

Wharfedale MovieStar 60

Wharfedale MovieStar 60 6-Speaker System User Manual

Model: MovieStar 60

INTRODUCTION

This manual provides essential information for the proper setup, operation, and maintenance of your Wharfedale MovieStar 60 6-Speaker System. Please read these instructions carefully before using your new speaker system to ensure optimal performance and longevity.



Image: The Wharfedale MovieStar 60 6-Speaker System, featuring a central subwoofer unit and five compact satellite speakers, all in a black finish. Two satellite speakers are positioned on top of the subwoofer, while the remaining three are arranged around it, illustrating the complete home theater audio setup.

SETUP

Unpacking and Inspection

- Carefully remove all components from the packaging.
- Inspect all speakers and cables for any signs of damage. Contact your retailer immediately if any damage is found.
- Retain packaging for future transport or storage.

Speaker Placement

- **Subwoofer:** Place the subwoofer in a corner or along a wall for optimal bass response. Experiment with placement to find the best sound for your room.

- **Front Speakers (2):** Position these speakers equidistant from your primary listening position, typically on either side of your television or display.
- **Center Speaker (1):** Place the center speaker directly above or below your television, ensuring it is centered with the screen for clear dialogue.
- **Surround Speakers (2):** Position these speakers to the sides or slightly behind your listening position, at or slightly above ear level.

Connections

- Ensure all audio components (AV receiver, television, etc.) are powered off before making connections.
- Connect the satellite speakers and center speaker to the appropriate speaker outputs on your AV receiver using speaker wire. Observe correct polarity (+ to + and - to -).
- Connect the subwoofer to the LFE (Low-Frequency Effects) or Subwoofer output on your AV receiver using an RCA cable.
- Plug the subwoofer's power cord into a suitable AC outlet.
- For wireless connectivity, ensure your source device's Bluetooth is enabled and pair it with the speaker system. Refer to your source device's manual for Bluetooth pairing instructions.

OPERATING INSTRUCTIONS

Power On/Off

- Ensure all connections are secure.
- Power on your AV receiver and then the subwoofer.
- The system will power off when the AV receiver is turned off, or can be manually powered off via the subwoofer's power switch or remote control.

Volume Control

- Adjust the overall system volume using your AV receiver's remote control.
- The subwoofer typically has its own volume control, allowing you to fine-tune the bass level independently.

Source Selection

- Select your desired audio source (e.g., TV, Blu-ray player, Bluetooth device) using your AV receiver's input selector.

MAINTENANCE

Cleaning

- Dust the speaker cabinets regularly with a soft, dry cloth.
- Avoid using abrasive cleaners, solvents, or polishes, as these can damage the finish.
- Do not spray cleaning liquids directly onto the speakers.

General Care

- Keep speakers away from direct sunlight, heat sources, and excessive moisture.
- Ensure adequate ventilation around the subwoofer to prevent overheating.
- Avoid placing heavy objects on top of the speakers.

TROUBLESHOOTING

If you experience issues with your speaker system, consult the following common problems and solutions before contacting support.

- **No Sound:**
 - Check all power connections for the subwoofer and AV receiver.
 - Verify all speaker wire connections are secure and correctly polarized.
 - Ensure the correct input source is selected on your AV receiver.
 - Check the volume levels on both your AV receiver and the subwoofer.
- **Distorted Sound:**
 - Reduce the volume level on your AV receiver and/or subwoofer.
 - Check speaker wire connections for any frayed strands or short circuits.
 - Ensure the speakers are not overdriven.
- **No Bass from Subwoofer:**
 - Verify the subwoofer's power is on and its volume is adjusted.
 - Check the RCA cable connection from the AV receiver to the subwoofer.
 - Ensure the LFE/subwoofer output is enabled and configured correctly in your AV receiver's settings.
- **Bluetooth Connectivity Issues:**
 - Ensure the speaker system is in Bluetooth pairing mode.
 - Check that your source device's Bluetooth is enabled and within range.
 - Try unpairing and re-pairing the device.

SPECIFICATIONS

Feature	Specification
Model Name	Wharfedale MovieStar 60
Speaker Type	Subwoofer, Satellite
Recommended Uses	Home Theater
Compatible Devices	Home Theater Systems
Surround Sound Channel Configuration	1 (Subwoofer, typically paired with 5 satellites for 5.1 setup)
Colour	Black
Control Method	Remote
Wireless Communication Technology	Bluetooth
Speaker Size (Satellites)	4 Inches (dome midrange)
Power Source	AC

Feature	Specification
RMS Power (Subwoofer)	100 Watts
Item Weight	20.41 kg (approx. 20 kg 400 g)
Manufacturer	Wharfedale
Mounting Type	Mixed_mount


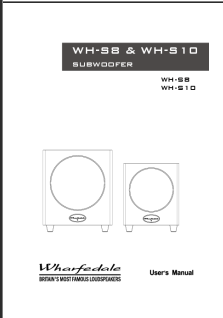
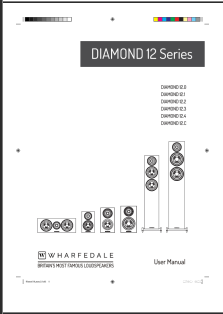
WARRANTY AND SUPPORT

For information regarding product warranty, please refer to the Warranty Policy provided at the time of purchase or contact Wharfedale customer support. Details on returns can be found in the Returns Policy.

For further assistance or technical support, please visit the official Wharfedale website or contact their customer service department.

© 2023 Wharfedale. All rights reserved.

Related Documents - MovieStar 60

	<p>Wharfedale WH-S8 & WH-S10 Subwoofer User Manual and Setup Guide</p> <p>Comprehensive user manual for Wharfedale WH-S8 and WH-S10 active subwoofers, covering important safety information, installation, connection methods, operating instructions, basic tuning, troubleshooting common issues, maintenance, servicing, and detailed specifications.</p>
	<p>Wharfedale WH-S8 & WH-S10 Subwoofer User Manual</p> <p>Comprehensive user manual for Wharfedale WH-S8 and WH-S10 active subwoofers, detailing safety instructions, installation, connection methods, operation, tuning, troubleshooting, maintenance, and technical specifications.</p>
	<p>Wharfedale Diamond 12 Series User Manual</p> <p>Comprehensive user manual for the Wharfedale Diamond 12 series of loudspeakers, including setup, connection, care, and specifications for models like the Diamond 12.3.</p>



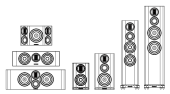
W H A R F E D A L E
BRITAIN'S MOST FAMOUS LOUSPEAKERS

Users Manual

[Wharfedale SW-10, SW-12, SW-15 Subwoofer User's Manual | Installation & Operation Guide](#)

Comprehensive user's manual for Wharfedale SW-10, SW-12, and SW-15 active subwoofers.

Includes safety information, installation guides, operating instructions, troubleshooting, and detailed specifications.

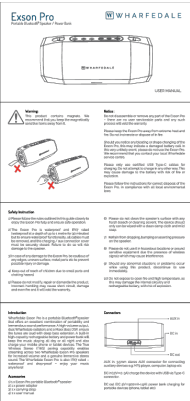


WHARFEDALE

User Manual

[Wharfedale EVO4 Series Loudspeaker User Manual | Setup, Specifications & Guide](#)

This user manual provides comprehensive guidance for the Wharfedale EVO4 Series loudspeakers, including safety precautions, unpacking, setup, positioning, connection methods, home theatre system integration, care instructions, troubleshooting, and detailed specifications for all models (EVO 4.1, 4.2, 4.3, 4.4, 4.C, 4.CS, 4.S).



[Wharfedale Exson Pro Portable Bluetooth Speaker & Power Bank User Manual](#)

Comprehensive user manual for the Wharfedale Exson Pro portable Bluetooth speaker and power bank. Learn about features, safety, setup, TWS pairing, and troubleshooting.



[Wharfedale MovieStar 60 Home Cinema System Overview](#)

Explore the Wharfedale MovieStar 60, a chic, retro-styled home cinema system offering unparalleled performance and immersive surround sound. Discover its features, specifications, and two distinct models for an exceptional audio-visual experience.

lang:en score:39 filesize: 440.56 K page_count: 6 document date: 2002-07-11