

Bostitch STCR21153/8

Bostitch Office B8 PowerCrown Staples (STCR21153/8) Instruction Manual

INTRODUCTION

This manual provides essential information for the proper use and understanding of Bostitch Office B8 PowerCrown Staples, model STCR21153/8. These staples are designed for high-capacity stapling tasks, offering enhanced performance and durability.

PRODUCT FEATURES

- **Model:** STCR21153/8
- **Leg Length:** 0.375 inches (3/8")
- **Capacity:** Up to 45 sheets
- **Quantity:** 5,000 staples per box
- **Technology:** PowerCrown design for increased staple strength and reduced effort.
- **Material:** Finest quality steel wire with finely honed chisel points for maximum penetration.



Image: Box of Bostitch B8 PowerCrown Staples with several loose staples in front.

SETUP AND INSTALLATION

Bostitch B8 PowerCrown Staples are designed for use with compatible Bostitch staplers, including plier-style and electric staplers that accept 3/8" (10mm) leg length staples. Always refer to your stapler's specific instructions for loading.

1. **Identify Compatible Stapler:** Ensure your stapler is designed for B8 PowerCrown staples with a 3/8" leg length. Using incorrect staples can lead to jamming or poor performance.
2. **Open Stapler Magazine:** Locate the staple magazine release mechanism on your stapler. This often involves pressing a button or pulling a lever to open the staple tray.
3. **Insert Staples:** Place a strip of Bostitch B8 PowerCrown Staples into the magazine with the crown (the top, flat part) facing upwards. Ensure the staples slide smoothly into place.
4. **Close Stapler Magazine:** Gently push the staple magazine back into the stapler until it locks securely.



Image: Multiple strips of Bostitch B8 PowerCrown Staples, ready for loading.



Image: A stack of Bostitch B8 PowerCrown Staples with one strip pulled out, demonstrating their individual units.

Your browser does not support the video tag.

Video: A close look at Bostitch 3/8" staples, demonstrating their shape and how they are loaded into a stapler. This video highlights the PowerCrown design and compatibility with various stapler types.

OPERATING INSTRUCTIONS

Once the staples are loaded, operate your stapler according to its manufacturer's instructions. The PowerCrown design of these staples ensures efficient penetration and secure fastening for up to 45 sheets of paper.

- **Paper Capacity:** These staples are designed to bind up to 45 sheets of standard 20 lb bond paper. Exceeding this capacity may result in incomplete stapling or stapler jamming.
- **Optimal Performance:** For best results, ensure the paper stack is aligned evenly before stapling.



Image: A close-up view of a single Bostitch B8 PowerCrown staple, highlighting its unique crown shape.

MAINTENANCE

Proper storage of your Bostitch B8 PowerCrown Staples will ensure their longevity and performance.

- **Storage:** Store staples in their original packaging in a dry environment to prevent rust and damage.
- **Handling:** Handle staple strips carefully to avoid breaking them, which can lead to stapler jams.

TROUBLESHOOTING

If you encounter issues while using your Bostitch B8 PowerCrown Staples, consider the following:

- **Stapler Jams:**
 - Ensure the staples are correctly loaded into the stapler's magazine.
 - Verify that the stapler is compatible with B8 PowerCrown 3/8" staples.
 - Check if you are exceeding the stapler's or staple's maximum sheet capacity.
 - Inspect for broken staple strips or bent staples within the magazine.
- **Incomplete Stapling:**

- Confirm the paper stack is within the 45-sheet capacity.
- Ensure the stapler is fully depressed during operation.

SPECIFICATIONS

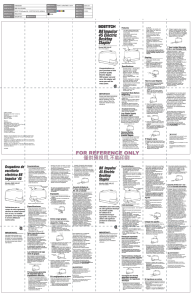
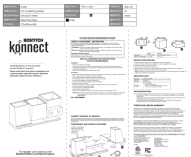
Brand	Bostitch
Model Number	STCR21153/8
Staple Type	B8 PowerCrown Staples
Leg Length	0.375 inches (3/8")
Sheet Capacity	Up to 45 sheets
Quantity	5,000 staples per box
Color	Silver
Product Dimensions	4.44 x 1.5 x 2 inches (box dimensions)
Item Weight	0.18 Kilograms (approx. 6.35 ounces)

WARRANTY AND SUPPORT

For information regarding warranty coverage, product support, or to contact customer service, please refer to the official Bostitch website or the documentation included with your stapler. Specific warranty details for consumables like staples may vary.

You can visit the [Bostitch Store](#) for more product information.

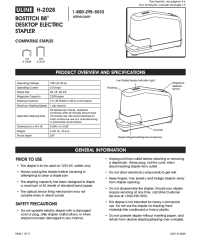
Related Documents - STCR21153/8

	<p>BOSTITCH B8 Impulse 45 Electric Desktop Stapler User Manual</p> <p>Comprehensive user manual for the BOSTITCH B8 Impulse 45 Electric Desktop Stapler. Details features, specifications, operation, maintenance, and safety guidelines for this heavy-duty, no-jam electric stapler.</p>
	<p>Bostitch Konnect Wireless Charging Station with Pencil Cup - User Manual</p> <p>User manual and instructions for the Bostitch Konnect wireless charging station with pencil cup. Features include safety guidelines, setup instructions, troubleshooting tips, and warranty information.</p>



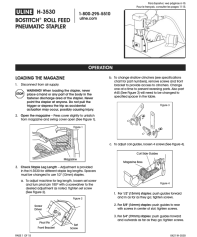
[BOSTITCH Fastening Catalog: Nailers, Staplers, Compressors, and Accessories](#)

Comprehensive catalog from BOSTITCH featuring a wide range of pneumatic and cordless nailers, staplers, compressors, manual fastening tools, air accessories, and fasteners for professional and industrial applications.



[Bostitch B8 Desktop Electric Stapler User Manual and Guide](#)

This document provides comprehensive instructions and troubleshooting for the Bostitch B8 Desktop Electric Stapler. It covers product specifications, operation, staple loading, clearing jams, and safety precautions. Compatible with ULINE stapler models S-17849 and S-14137.



[Bostitch H-3530 Roll Feed Pneumatic Stapler Operation and Maintenance Manual](#)

This manual provides detailed instructions for operating, loading, adjusting, and maintaining the Bostitch H-3530 Roll Feed Pneumatic Stapler. It includes safety warnings, specifications, troubleshooting tips, and replacement parts information.



[BOSTITCH SL1838BC Cap Stapler: Operation and Maintenance Manual](#)

This comprehensive manual provides essential operating, safety, and maintenance instructions for the BOSTITCH SL1838BC Cap Stapler, a high-performance pneumatic fastening tool.