

Manuals+

[Q & A](#) | [Deep Search](#) | [Upload](#)

manuals.plus /

- › [Bodum](#) /
- › [Bodum C-Mill Electric Blade Coffee and Spice Grinder User Manual](#)

Bodum 5679-01US

Bodum C-Mill Electric Blade Coffee and Spice Grinder User Manual

Brand: Bodum | Model: 5679-01US

1. PRODUCT OVERVIEW

The Bodum C-Mill Electric Blade Coffee and Spice Grinder is designed to provide freshly ground coffee beans or spices with ease. Its compact and elegant design makes it a suitable addition to any kitchen countertop. The grinder features a durable stainless steel cutting blade that operates at a precise RPM, allowing users to achieve their desired grind consistency from coarse to fine. A transparent lid enables visual monitoring of the grinding process, and operation is controlled by a simple pulse button.

Key Features:

- Neat, compact blade grinder holds up to 45g coffee beans.
- Durable, stainless steel blade spins at a precise RPM.
- Simple push button control for pulse or continuous grind.
- Transparent lid makes it easy to achieve the desired coarseness of your beans.
- Silicone pad in lid attachment prevents coffee grinds from accumulating in the join.
- Convenient cord storage in base.



Figure 1.1: The Bodum C-Mill Electric Blade Coffee and Spice Grinder in black, showcasing its sleek design and

transparent lid with coffee beans inside.

2. SAFETY INSTRUCTIONS

Please read all safety instructions carefully before using the appliance. Failure to follow these instructions may result in electric shock, fire, or serious injury.

- Always unplug the grinder from the power outlet before cleaning or when not in use.
- Do not immerse the motor base in water or any other liquid. Clean with a damp cloth only.
- Keep hands and utensils out of the grinding chamber while the appliance is operating to prevent personal injury or damage to the grinder.
- Ensure the lid is securely in place before operating the grinder.
- This appliance is not intended for use by persons (including children) with reduced physical, sensory or mental capabilities, or lack of experience and knowledge, unless they have been given supervision or instruction concerning use of the appliance by a person responsible for their safety.
- Do not operate any appliance with a damaged cord or plug, or after the appliance malfunctions or has been dropped or damaged in any manner.
- Use only attachments recommended or sold by the manufacturer.
- Do not use outdoors.
- Do not let the cord hang over the edge of a table or counter, or touch hot surfaces.
- This grinder is designed for grinding coffee beans and dry spices only. Do not grind oily seeds, nuts, or wet ingredients.

3. PARTS LIST

The Bodum C-Mill Electric Blade Coffee and Spice Grinder consists of the following main components:

- **Grinder Unit:** The main body containing the motor and grinding chamber.
- **Stainless Steel Blade:** Located within the grinding chamber for processing beans/spices.
- **Transparent Lid:** Covers the grinding chamber and activates the grinding mechanism when secured.
- **Power Cord:** Integrated into the base with convenient storage.

NEAT, COMPACT BLADE GRINDER

Holds up to 45g of coffee beans.
Enough to brew 34oz of coffee.



45g • 1.58oz



34oz (1L)



Power: 150 W

Figure 3.1: The grinder unit showing its capacity (45g / 1.58oz coffee beans, enough for 34oz / 1L coffee) and power rating (150W).

DURABLE, STAINLESS STEEL BLADE SPINS AT A PRECISE RPM

Simple push button control for pulse
or continuous grind.



Figure 3.2: Close-up of the durable stainless steel blade and the grinder's compact dimensions (6.9 inches tall, 4.5 inches wide).

4. SETUP

Before first use, please follow these steps:

1. **Unpack:** Carefully remove the grinder and all packaging materials from the box.
2. **Clean:** Wipe the exterior of the grinder with a damp cloth. The grinding chamber and lid can be wiped clean with a dry cloth or a small brush. Do not wash the motor base or immerse it in water.
3. **Position:** Place the grinder on a stable, dry, and flat surface.
4. **Cord Storage:** Unwind the power cord from the base as needed. The cord can be neatly tucked away in its base for storage when not in use.

5. OPERATING INSTRUCTIONS

Grinding Coffee Beans:

1. **Fill Grinder:** Ensure the grinder is unplugged. Place the desired amount of whole coffee beans into the grinding chamber. Do not overfill; the maximum capacity is 45 grams (approximately 1.58 ounces).

2. **Secure Lid:** Place the transparent lid onto the grinder unit and twist or press down firmly until it is securely locked in place. The grinder will not operate unless the lid is properly secured.
3. **Plug In:** Plug the power cord into a standard electrical outlet.
4. **Grind:** Depress the red power button located on top of the lid. The stainless steel blade will begin to spin, grinding the coffee beans.
5. **Monitor Grind:** Observe the grinding process through the transparent lid. Release the button once the desired grind consistency is achieved. For a more uniform grind, use short pulses rather than continuous grinding.
6. **Remove Grounds:** Unplug the grinder. Carefully remove the lid and pour the freshly ground coffee into your preferred coffee maker or storage container.

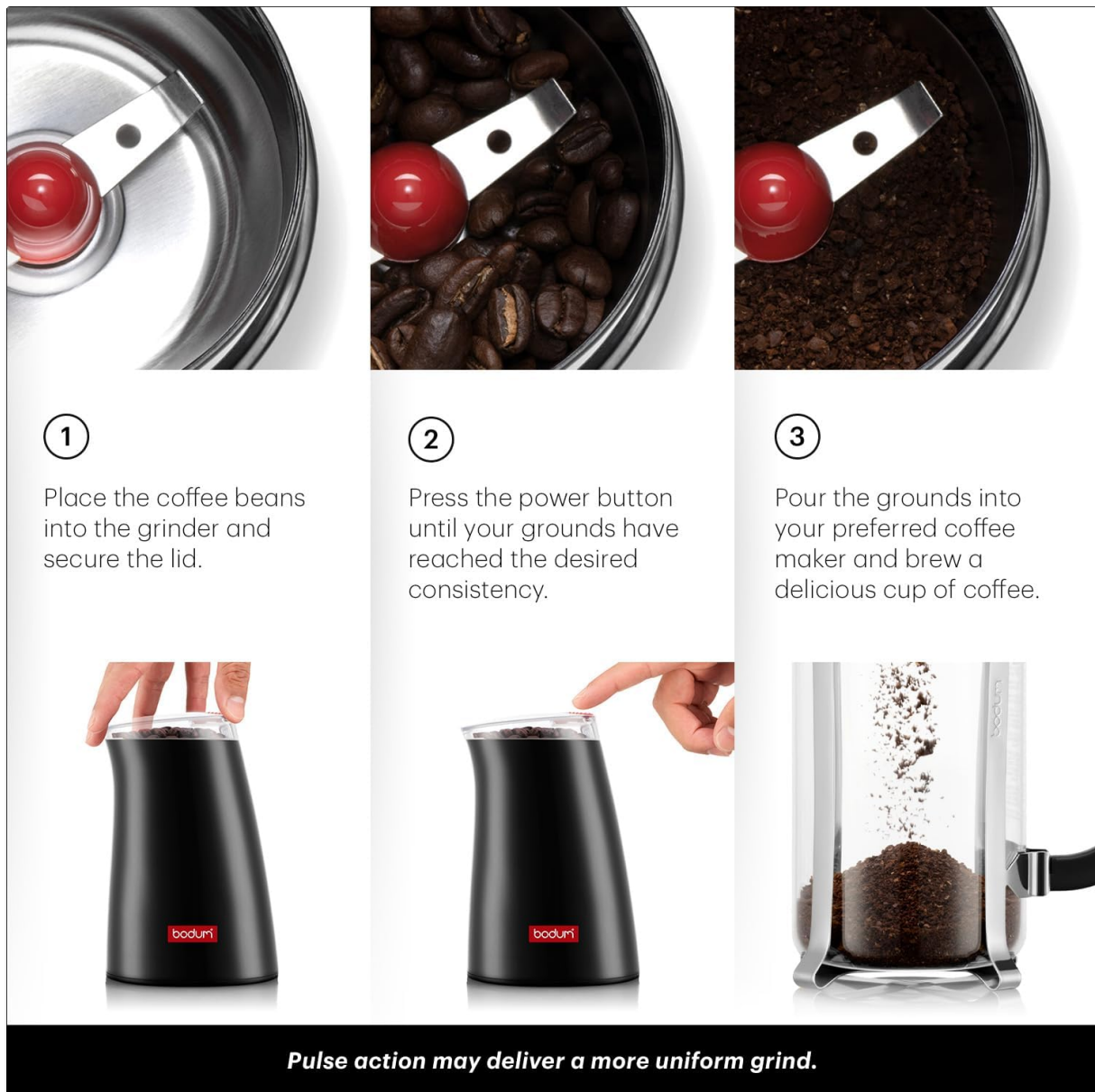


Figure 5.1: Visual guide for operating the grinder: 1) Place beans and secure lid, 2) Press power button to grind, 3) Pour grounds into coffee maker.

Achieving Desired Grind:

The Bodum C-Mill grinder uses a blade system, and the fineness of the grind is controlled by the duration of grinding. For a coarser grind, operate for a shorter period. For a finer grind, operate for a longer period. Using short, controlled pulses can help achieve a more consistent grind and prevent overheating.

6. MAINTENANCE AND CLEANING

Regular cleaning will ensure the longevity and optimal performance of your Bodum C-Mill grinder.

- **Always Unplug:** Before cleaning, ensure the grinder is unplugged from the power outlet.
- **Clean Grinding Chamber:** Use a small brush (a stiff bristle brush or an old toothbrush works well) to remove any residual coffee grounds from the grinding chamber and around the blade. A damp cloth can be used to wipe the inside, but ensure it is thoroughly dry before next use.
- **Clean Lid:** The transparent lid can be washed with warm, soapy water. Rinse thoroughly and dry completely before reattaching. The silicone pad in the lid attachment helps prevent grounds from accumulating.
- **Clean Exterior:** Wipe the exterior of the grinder with a soft, damp cloth. Do not use abrasive cleaners or scouring pads.
- **Do Not Immerse:** Never immerse the motor base or power cord in water or any other liquid.
- **Storage:** Store the grinder in a dry place. Utilize the convenient cord storage in the base to keep the cord tidy.

7. TROUBLESHOOTING

If you encounter any issues with your Bodum C-Mill grinder, please refer to the following table:

Problem	Possible Cause	Solution
Grinder does not turn on.	Not plugged in; Lid not secured; Power outage.	Ensure grinder is properly plugged into a working outlet. Check that the lid is firmly in place. Check household circuit breaker.
Grinding is inconsistent (some coarse, some fine).	Continuous grinding; Overfilling.	Use short, controlled pulses. Do not overfill the grinding chamber; ensure beans can circulate freely.
Grinder motor sounds strained.	Overfilling; Grinding inappropriate items.	Reduce the amount of beans. Ensure only coffee beans or dry spices are being ground.
Excessive static cling of grounds.	Dry air conditions.	This is common with blade grinders. A small amount of static is normal. You can try adding a tiny drop of water to the beans before grinding (ensure it's very minimal to avoid clumping).

8. SPECIFICATIONS

Attribute	Detail
Brand	Bodum
Model Number	5679-01US
Color	Black
Style	C-Mill Blade Grinder
Product Dimensions	7.3"L x 4.8"W x 4.4"H (18.5cm L x 12.2cm W x 11.2cm H)
Capacity	1.6 ounces (approx. 45 grams)

Attribute	Detail
Recommended Uses	Grinding coffee beans and dry spices
Voltage	120 Volts (DC)
Item Weight	1.9 pounds (approx. 0.86 kg)
UPC	727015318677
Date First Available	March 18, 2004



Figure 8.1: Detailed product dimensions: 7.3 inches height, 4.8 inches width, 4.4 inches depth.

9. WARRANTY AND SUPPORT

Bodum products are manufactured to the highest quality standards. For specific warranty information regarding your Bodum C-Mill Electric Blade Coffee and Spice Grinder, please refer to the warranty card included with your purchase or visit the official Bodum website.

For technical support, troubleshooting assistance beyond this manual, or to inquire about replacement parts, please contact Bodum Customer Service:

Website: www.bodum.com

Customer Service Contact: Refer to the "Contact Us" section on the official website for phone numbers and email support in your region.