

BOSCH 1617EVSPK

BOSCH 1617EVSPK Wood 12 Amp Router Tool Combo Kit - Instruction Manual

Model: 1617EVSPK

Brand: BOSCH

PRODUCT OVERVIEW

The Bosch 1617EVSPK 2.25 HP Combination Plunge- and Fixed-Base Router is a versatile tool designed for a broad range of routing applications. It features a powerful 12 Amp motor with adjustable speed settings and Constant Response Circuitry to maintain consistent speed under load, ensuring clean and accurate results.

This kit includes both a fixed base and a plunge base, offering flexibility for various woodworking tasks such as precise bit plunging, edge forming, slot cutting, laminate trimming, and dovetail cutting.

Key Features:

- **VERSATILE:** Kit can be used for a broad range of applications, including precise bit plunging, edge forming, slot cutting, laminate trimming and dovetail cutting, making it one of the most widely used routers for wood working.
- **DURABILITY:** Aluminum construction makes this one of our most durable wood routers yet with wooden handles on a fixed base and a soft grip handle on a plunge base.
- **EASE OF USE:** Rounded hardwood handles maximize user control; microfine bit-depth adjustment.
- **CONVENIENT:** With the built-in constant response circuitry, our 1617EVSPK wood router will maintain a constant speed throughout the cut, so you get cleaner, more accurate results.
- **12 AMP MOTOR AND ADJUSTABLE SPEED DIAL:** User can set the optimal speed (8,000-25,000 RPM) for more or less power.
- **INCLUDES:** Plunge base, fixed base, 1/4 inch and 1/2 inch collet chucks, shaft wrench, collet nut wrench, chip shields and carrying case.

PACKAGE CONTENTS

The BOSCH 1617EVSPK Router Tool Combo Kit includes the following components:

- EVS Motor (16176)
- Plunge base (RA1166)
- Fixed base (RA1161)
- Fixed base chip shield
- Plunge base chip shield
- 1/2-inch and 1/4-inch self-releasing collet chucks
- Comfortable forged 16-mm and 24-mm bit-change wrenches
- T-handle hex height-adjustment wrench
- Rugged carrying case

KIT INCLUDES



Router, Fixed Base (RA1161) and Plunge Base (RA1166)



- 1/4 In. & 1/2 In. Self-Releasing Collet Chuck
- Shaft Wrench
- Collet Nut Wrench
- T-Handle Hex Height Adjustment Wrench



Carrying Case

Figure 1: Contents of the BOSCH 1617EVSPK Router Tool Combo Kit.

SETUP AND ASSEMBLY

The Bosch 1617EVSPK is designed for quick and tool-free conversion between its fixed and plunge bases. Follow these steps for initial setup:

1. Attaching the Motor to a Base:

Align the motor (16176) with either the fixed base (RA1161) or the plunge base (RA1166). The quick-clamp system allows for easy insertion and secure locking of the motor into the desired base without the need for additional tools.



Figure 2: Router motor and bases, illustrating the quick-clamp system.

2. Installing Collet Chucks and Bits:

Select the appropriate 1/2-inch or 1/4-inch self-releasing collet chuck for your router bit. Insert the collet into the motor shaft. Insert the router bit into the collet and tighten securely using the provided 16-mm and 24-mm bit-change wrenches. Ensure the bit is fully seated but not bottomed out.

3. Attaching Chip Shields:

Attach the appropriate chip shield (fixed base or plunge base) to help contain wood chips and dust during operation. These shields improve visibility and safety.

4. Precision Centering Design:

The Bosch Precision Centering Design allows the bit to be centered with the sub-base or optional template

guides. This feature is crucial for maintaining accuracy when using guidance devices like jigs, templates, or dovetail fixtures.

PRECISION CENTERING DESIGN



Figure 3: Router in operation, demonstrating the Precision Centering Design.

OPERATING INSTRUCTIONS

Proper operation of your Bosch router ensures safety and optimal results. Always wear appropriate personal protective equipment, including eye and hearing protection.

1. Power and Speed Control:

- The router features a 12 Amp motor with a variable speed dial, allowing adjustment from 8,000 to 25,000 RPM. Select the optimal speed based on the material and routing task.
- The Constant Response Circuitry maintains a consistent speed under load, preventing bogging down and ensuring clean, accurate cuts.
- The integrated soft-start feature reduces torque upon start-up, providing a smoother transition and easier

handling.

BEST FOR

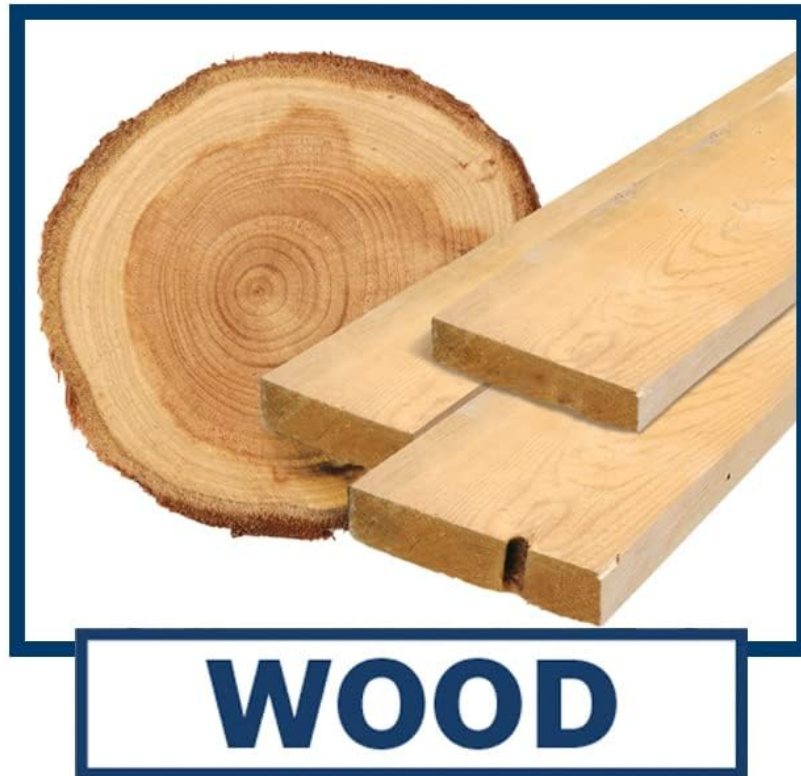


Figure 4: Variable Speed Dial for precise control.

2. Depth Adjustment:

- Both the fixed and plunge bases feature microfine bit depth adjustment systems. This allows for accurate and fast depth adjustments, precise to 1/64 inch over an overall range of one inch.
- For the fixed base, an advanced bit height adjustment system allows convenient adjustment from above a router table using the T-handle hex height-adjustment wrench.



Microfine Bit-Depth Adjustment

Figure 5: Microfine Bit-Depth Adjustment system.

3. Using the Plunge Base:

- The plunge base features smooth plunge action, allowing users to glide along the intended cutline using dovetail fixtures, templates, jigs, and other guidance devices.
- Soft grip handles on the plunge base enhance control and comfort during operation.

Your browser does not support the video tag.

Video 1: Demonstration of the BOSCH RA1054 Router Edge Guide, showing how it attaches and functions with the router for precise edge routing. This video is provided by the seller, BOSCH (S-B Powertools).

MAINTENANCE

Regular maintenance ensures the longevity and optimal performance of your Bosch router. Always disconnect the tool from the power source before performing any maintenance.

- **Cleaning:** Regularly clean the router, especially around the motor housing, bases, and collet area, to prevent sawdust and debris buildup. The power switch is dust-sealed, but keeping the area clean will help prevent issues. Use a soft brush or compressed air to remove dust.
- **Collet Maintenance:** Inspect collets for wear or damage. A worn collet can lead to bit slippage and inaccurate cuts. Clean collets and collet nuts regularly to ensure proper gripping of the bit.
- **Cord Inspection:** Periodically check the power cord for any signs of damage, cuts, or fraying. Replace damaged cords immediately to prevent electrical hazards.
- **Lubrication:** The plunge mechanism may benefit from occasional light lubrication if it becomes stiff. Refer to the full user manual for specific lubrication points and recommended lubricants.

TROUBLESHOOTING

This section addresses common issues you might encounter with your Bosch router. For more complex problems, refer to the full user manual or contact Bosch customer service.

Problem	Possible Cause	Solution
Router does not start or loses power intermittently.	Power cord not connected or damaged. Dust buildup in the power switch. Overload protection activated.	Ensure the power cord is securely plugged in and undamaged. Use compressed air to clear dust from around the power switch. Reduce the cutting depth or feed rate. Allow the motor to cool if it has been running continuously under heavy load.
Bit slippage or inaccurate cuts.	Collet not tightened sufficiently. Worn or dirty collet. Incorrect bit size for collet.	Ensure the collet nut is tightened firmly with the provided wrenches. Clean the collet and collet nut. Replace if worn. Use the correct collet size (1/4-inch or 1/2-inch) for your router bit shank.
Plunge action is stiff or not smooth.	Lack of lubrication on plunge posts. Dust or debris on plunge posts.	Clean plunge posts and apply a light coat of silicone-based lubricant. Clean any visible debris from the plunge mechanism.

SPECIFICATIONS

Specification	Value
Brand	BOSCH
Model Number	1617EVSPK

Specification	Value
Material	Plastic, Metal
Power Source	Corded Electric
Voltage	120 Volts
Amperage	12 Amps
Horsepower	2.25 HP
Maximum Rotational Speed (No Load RPM)	8,000-25,000 RPM
Base Type	Plunge, Fixed
Collet Capacity	1/4", 3/8", 1/2", 8 mm
Product Dimensions (W x H)	11.5"W x 11.6"H
Item Weight	18.2 Pounds
Country of Origin	Mexico

WARRANTY AND SUPPORT

The Bosch 1617EVSPK Router Tool Combo Kit is backed by a comprehensive warranty and support system:

- **Limited Warranty:** This Bosch power tool comes with a one-year limited warranty from the date of purchase.
- **Money Back Guarantee:** A 30-day money back guarantee is offered.
- **Service Protection Plan:** Includes a one-year service protection plan.

For detailed warranty information, service inquiries, or technical support, please refer to the official Bosch website or the full user manual provided with your product. A digital version of the user manual is available for download:

[Download User Manual \(PDF\)](#)