

Manuals.plus /

› Dimension /

› Dimension The Legend DVD (B00004Z4WT) Instruction Manual

Dimension B00004Z4WT

Dimension The Legend DVD (B00004Z4WT) Instruction Manual

Model: B00004Z4WT

INTRODUCTION

This manual provides essential information for the proper use and care of your "The Legend" DVD, released by Dimension. This DVD features the martial arts film starring Jet Li. Please read these instructions carefully to ensure optimal viewing experience and to maintain the longevity of your disc.

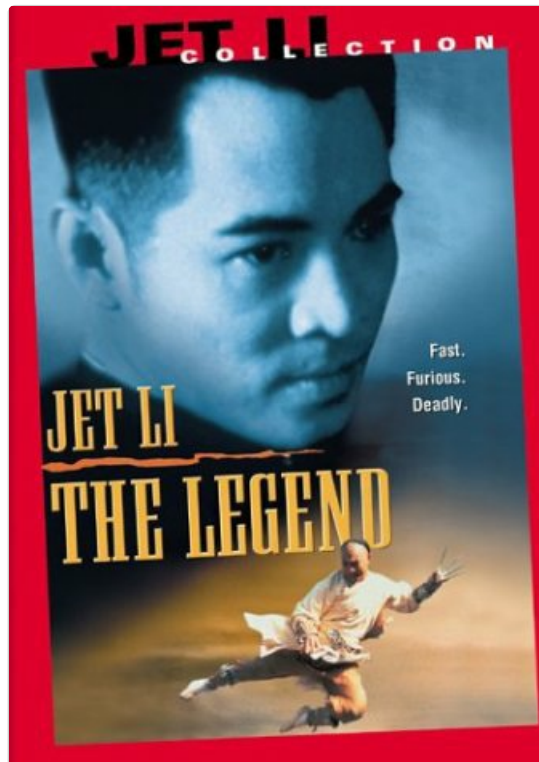


Image: Front cover of "The Legend" DVD. The artwork displays a close-up of actor Jet Li's face in a cool blue hue at the top, with the film's title "JET LI THE LEGEND" in bold, gold lettering below. At the bottom, a martial artist is captured mid-action, performing a dynamic kick.

The overall design is set against a red border, emphasizing the film's action genre.

SETUP

To begin watching "The Legend" DVD, follow these steps:

1. **Connect your DVD Player:** Ensure your DVD player is properly connected to your television or display device according to its manufacturer's instructions. This typically involves connecting video cables (HDMI, composite, component) and audio cables.
2. **Power On:** Turn on your television and your DVD player. Select the correct input source on your television that corresponds to your DVD player's connection.
3. **Insert the DVD:** Gently open the DVD player's disc tray. Hold the "The Legend" DVD by its edges to avoid touching the playback surface. Place the disc label-side up into the tray. Close the disc tray.

OPERATING INSTRUCTIONS

Once the DVD is loaded, the player will typically display a menu. Use your DVD player's remote control to navigate.

- **Play Movie:** Select "Play Movie" or "Start" from the main menu to begin playback.
- **Chapter Selection:** If available, use the "Chapter Select" option to jump to specific scenes in the film.
- **Audio Options:** The DVD supports English (Dolby Digital 5.1) audio. Use the "Audio" or "Language" option on the DVD menu or your remote control to select the desired audio track.
- **Subtitle Options:** If subtitles are available, use the "Subtitles" option on the DVD menu or your remote control to turn them on or off, or to select a language.
- **Basic Controls:**
 - **Play/Pause:** Press to start or temporarily stop playback.
 - **Stop:** Press to end playback and return to the main menu or stop the disc.
 - **Fast Forward/Rewind:** Use these buttons to quickly scan through the movie.
 - **Skip:** Use the skip buttons to jump to the next or previous chapter.

MAINTENANCE

Proper care of your DVD will ensure its longevity and consistent performance.

- **Handling:** Always hold the DVD by its outer edges or by inserting a finger through the center hole. Avoid touching the shiny playback surface.
- **Cleaning:** If the disc becomes dirty or smudged, gently wipe the playback surface with a soft, lint-free cloth. Wipe from the center of the disc outwards in a straight line, not in a circular motion. Do not use abrasive cleaners or solvents.
- **Storage:** Store the DVD in its original case, away from direct sunlight, extreme temperatures, and high humidity.
- **Avoid Scratches:** Do not place the disc on rough surfaces or allow it to come into contact with sharp objects.

TROUBLESHOOTING

If you encounter issues while playing "The Legend" DVD, consider the following common solutions:

- **Disc Not Playing/Loading:**
 - Ensure the disc is inserted correctly (label-side up).
 - Check if the disc is clean and free of smudges or scratches. Clean if necessary.

- Try playing another DVD to determine if the issue is with the player or the disc.
- Restart your DVD player.
- **Skipping or Freezing:**
 - Clean the disc thoroughly as described in the Maintenance section.
 - Inspect the disc for deep scratches or damage. Severely damaged discs may not play correctly.
- **No Audio or Video:**
 - Verify that all cables connecting your DVD player to your TV are securely attached.
 - Ensure your TV is set to the correct input source.
 - Check the volume level on your TV and DVD player.
 - Confirm that the audio track is selected correctly on the DVD menu.

SPECIFICATIONS

Feature	Detail
Title	The Legend
ASIN	B00004Z4WT
Format	DVD (Closed-captioned, Color, Dolby, Letterboxed, NTSC, Widescreen)
Aspect Ratio	1.85:1
MPAA Rating	R (Restricted)
Run Time	1 hour and 40 minutes
Release Date	December 12, 2000
Director	Corey Yuen
Actors	Adam Cheng, Jet Li, Lung Chan, Man Cheuk Chiu, Sung Young Chen
Language	English (Dolby Digital 5.1)
Studio	Dimension
Number of Discs	1
Product Dimensions	7.3 x 5.3 x 0.6 inches; 4 ounces

WARRANTY AND SUPPORT

As "The Legend" is a movie DVD, specific product warranties are typically not provided by the film studio or distributor for the disc itself beyond initial manufacturing defects. If you experience issues with the disc, please refer to the retailer's return policy where the DVD was purchased.

For technical support related to your DVD player or television, please consult the instruction manual provided by the manufacturer of those devices.



