

Arrow T25

Arrow T25 Cable Stapler User Manual

Model: T25 | Brand: Arrow

INTRODUCTION

The Arrow T25 Cable Stapler is a professional-grade tool designed for reliable, powerful, and easy operation. It features working parts made of hardened steel and a chrome-plated steel body, ensuring durability and longevity. The adjustable double-action mechanism provides powerful striking with minimal handle pressure, and an anti-jamming system enhances user experience. A convenient staple viewing window allows for easy monitoring of staple levels. Manufactured in the USA, this stapler is specifically designed to use T25 round crown staples for securing electrical wires, telecommunication cables, alarm systems, and other low-voltage applications up to 6 mm in diameter.

PRODUCT FEATURES

- **All Chromed Steel Housing:** Durable construction with a powerful coil spring for consistent performance.
- **Contoured Vinyl Slip-Resistant Grip:** Provides comfort and secure handling during operation.
- **Grooved Wire Guide and Curved Blade:** Ensures precise staple placement around cables.
- **Jam-Resistant Rear Load Mechanism:** Designed for smooth and reliable staple loading, minimizing jams.
- **Versatile Application:** Perfect for all low voltage wire applications, including electrical, telecommunication, and alarm systems.
- **Staple Compatibility:** Uses Arrow T25 round crown staples (10mm, 11mm, 14mm).
- **Made in USA:** Ensures high-quality manufacturing standards.



LOW VOLTAGE WIRE/CABLE STAPLE GUN T25

T25™
STAPLES



Figure 1: Key Features of the Arrow T25 Cable Stapler. This diagram highlights the all-chromed steel housing, contoured vinyl slip-resistant grip, grooved wire guide, curved blade, and jam-resistant rear load mechanism.

SETUP AND LOADING STAPLES

Before using your Arrow T25 Cable Stapler, ensure it is properly loaded with the correct T25 round crown staples (10mm, 11mm, or 14mm).

1. **Remove Pusher Rod:** Locate the rear of the stapler. Press the latch to release and remove the pusher rod from the machine.
2. **Insert Staples:** Insert a strip of T25 staples into the magazine with the crown facing upwards.
3. **Replace Pusher Rod:** Reinsert the pusher rod and push it forward until it locks into place.

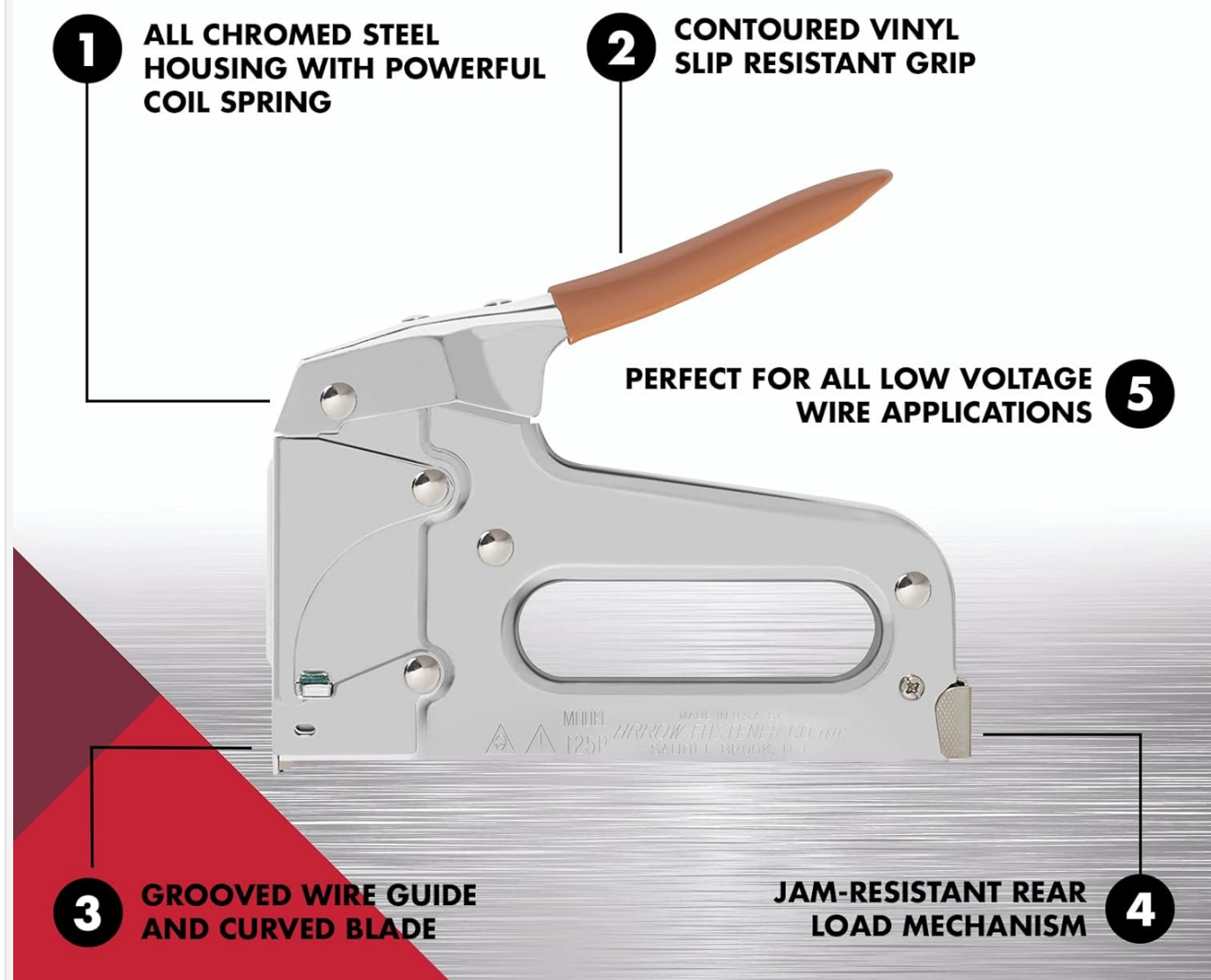


Figure 2: Staple Loading Instructions. This illustration demonstrates the steps for removing the pusher rod, inserting staples, and replacing the rod.

OPERATING INSTRUCTIONS

The Arrow T25 Cable Stapler is designed for easy and efficient operation. Follow these steps for optimal performance:

1. **Prepare Surface:** Ensure the surface where you intend to fasten the cable is clean and suitable for stapling.
2. **Position Cable:** Place the cable you wish to secure into the grooved wire guide at the front of the stapler. Ensure the cable fits snugly within the guide (up to 6mm diameter).
3. **Position Stapler:** Place the stapler firmly against the surface, ensuring the cable is properly aligned and the stapler is perpendicular to the surface.
4. **Depress Handle:** Apply firm, even pressure to the handle until the staple is fully driven into the material. The double-action mechanism ensures powerful striking.
5. **Check Staple:** Verify that the staple has securely fastened the cable without damaging its insulation.
6. **Monitor Staple Level:** Utilize the staple viewing window to check the remaining staple count. When the pusher rod can be lightly pushed forward until it stops, the visible projected part indicates the amount of staples remaining.



Figure 3: Arrow T25 Cable Stapler in Use. This image shows the stapler being used to secure a cable to a wooden surface, demonstrating proper handling.

MAINTENANCE

Regular maintenance ensures the longevity and optimal performance of your Arrow T25 Cable Stapler.

Cleaning the Staple Channel

1. **Remove Pusher Rod:** As described in the loading section, remove the pusher rod from the machine.
2. **Remove Screw and Nut:** Locate and remove the screw and nut from hole B (refer to Figure 2 for illustration).
3. **Pull Down Frame:** Gently pull down the entire inside frame for complete cleaning of the staple channel.
4. **Clean:** Use a soft brush or compressed air to remove any dust, debris, or staple residue from the channel.
5. **Reassemble:** Reassemble the frame, replace the screw and nut, and reinsert the pusher rod.

Periodically inspect the stapler for any signs of wear or damage. Keep the tool clean and dry when not in use.

TROUBLESHOOTING

Most issues with the Arrow T25 Cable Stapler can be resolved with simple checks.

Problem	Possible Cause	Solution
Staples not firing or jamming frequently.	Incorrect staple size/type, staple channel obstruction, worn pusher rod.	Ensure you are using genuine Arrow T25 staples of the correct size (10mm, 11mm, or 14mm). Clean the staple channel as per maintenance instructions. If the pusher rod is worn, contact customer support for replacement.
Staples not fully driven.	Insufficient pressure, hard material, incorrect staple length for material.	Apply firm and even pressure to the handle. Ensure the material is suitable for stapling. Consider using shorter staples if the material is exceptionally hard.
Stapler feels stiff or difficult to operate.	Lack of lubrication, internal debris.	Clean the internal mechanism. A small amount of light machine oil can be applied to moving parts, but avoid over-lubrication.

SPECIFICATIONS

Attribute	Detail
Brand	Arrow
Model Number	T25
Product Dimensions (L x W x H)	2.54 x 20.32 x 17.78 cm (1 x 8 x 7 inches)
Item Weight	900 grams (1.98 pounds)
Color	Grey
Material Type	Metal (Chrome-plated steel)
Staple Compatibility	Arrow T25 Round Crown Staples (10mm, 11mm, 14mm)
Max Cable Diameter	6 mm
Operation Mode	Manual
UPC	079055000259

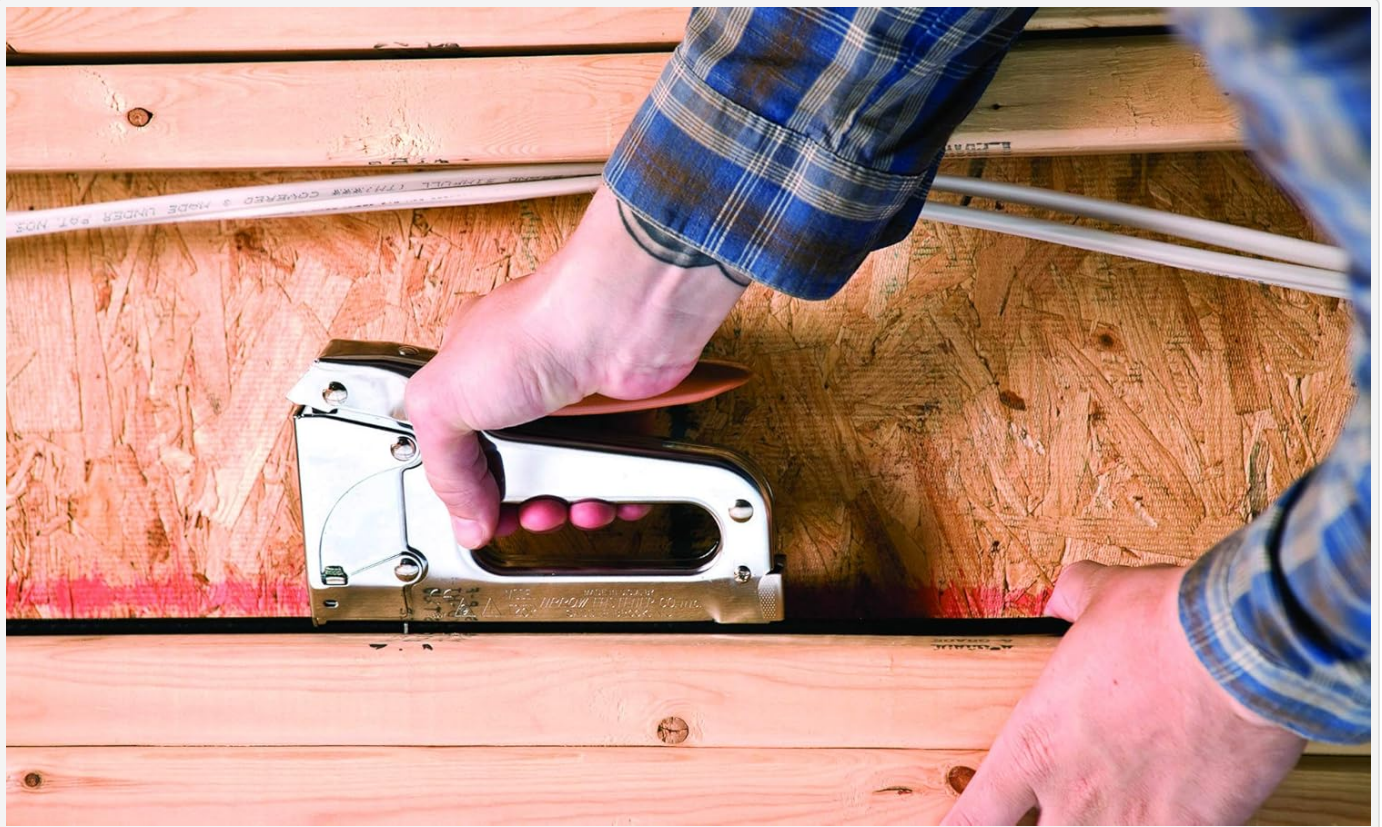


Figure 4: Dimensions of the Arrow T25 Cable Stapler. The stapler measures approximately 6 inches (152 mm) in height and 7 1/4 inches (184 mm) in length.

WARRANTY AND SUPPORT

The Arrow T25 Cable Stapler comes with a **Limited Lifetime Warranty**, reflecting Arrow's commitment to quality and durability. For warranty claims, technical support, or replacement parts, please contact Arrow Fastener Company, LLC directly.

For the most up-to-date contact information and support resources, please visit the official Arrow Fastener website or refer to the product packaging.



Figure 5: Arrow T25 Cable Stapler Packaging. The packaging highlights the product's features and the Limited Lifetime Warranty.

© 2024 Arrow Fastener Company, LLC. All rights reserved.

This manual is for informational purposes only. Specifications are subject to change without notice.