

manuals.plus /

- › [Werner](#) /
- › [Werner 6210 Stepladder User Manual](#)

Werner 6210

Werner 6210 Stepladder User Manual

Model: 6210 | Brand: Werner

PRODUCT OVERVIEW

The Werner 6210 is a 10-foot fiberglass stepladder designed for heavy-duty use, featuring a 300-pound duty rating (Type IA). Its nonconductive fiberglass rails enhance safety, particularly in environments with electrical hazards. The ladder incorporates internal pinch-proof spreaders and double-riveted Traction-Tred steps for stability and secure footing. Each rivet is reinforced with a metal part or washer, ensuring durability. Additional structural integrity is provided by a rear horizontal brace across each step and knee bracing on the top step and horizontal brace. The molded plastic top includes a built-in paint can hook for convenience. The innovative EDGE (Energy Diffusing Geometric Enhancement) molded brace and foot pad combination offers superior bracing strength and increased protection against damage, making it a reliable tool for various tasks.



Image: The Werner 6210 10-foot fiberglass stepladder, showcasing its red fiberglass rails, silver steps, and yellow top and feet.

SETUP AND INITIAL INSPECTION

Before each use, perform a thorough inspection of the stepladder. Ensure all components are in good working order and free from damage. Check for loose rivets, cracks in the fiberglass rails, and proper functioning of the internal pinch-proof spreaders. Verify that the Traction-Tred steps are clean and provide secure footing. Position the ladder on a firm, level surface. Fully open the stepladder until the spreaders are locked into place. Ensure all four feet are in full contact with the ground to maintain stability.

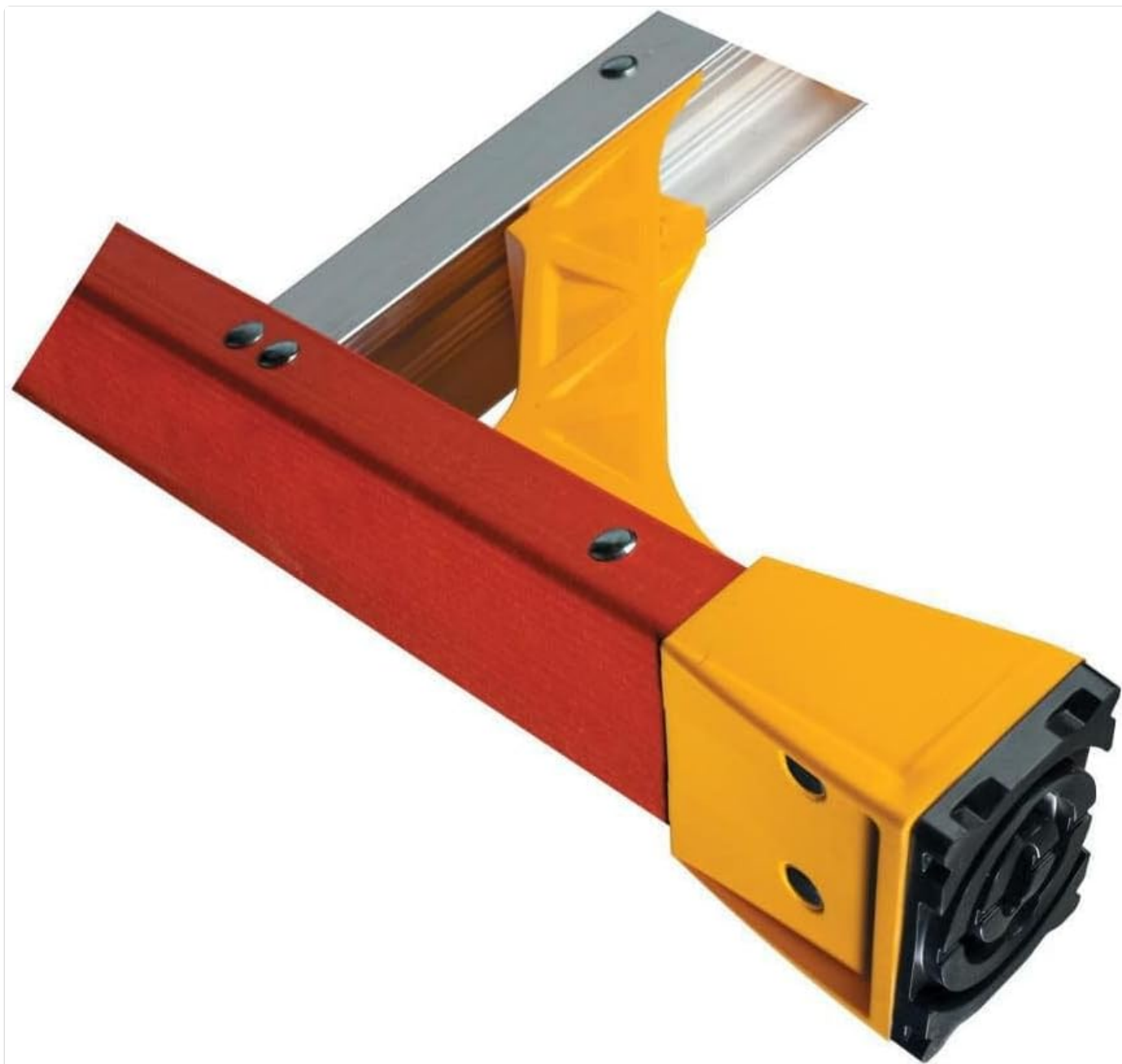


Image: A close-up view of the ladder's yellow foot pad and the red fiberglass rail, highlighting the EDGE bracing system.

OPERATING INSTRUCTIONS AND SAFETY GUIDELINES

Always face the ladder when climbing or descending. Maintain three points of contact (two hands and one foot, or two feet and one hand) at all times. Do not overreach; keep your body centered between the side rails. The top platform and the top two steps are not designed for standing. Utilize the molded plastic top for holding tools or a paint can, as it features a built-in hook. Never use the ladder if you feel dizzy or unwell. Ensure no one is working below the ladder while it is in use.



Image: The yellow top platform of the Werner stepladder, showing a drill and an orange extension cord resting on it, demonstrating its utility features.



Image: A close-up of the ladder's top platform, designed to hold tools and small items like screws, with a drill placed in a designated slot.

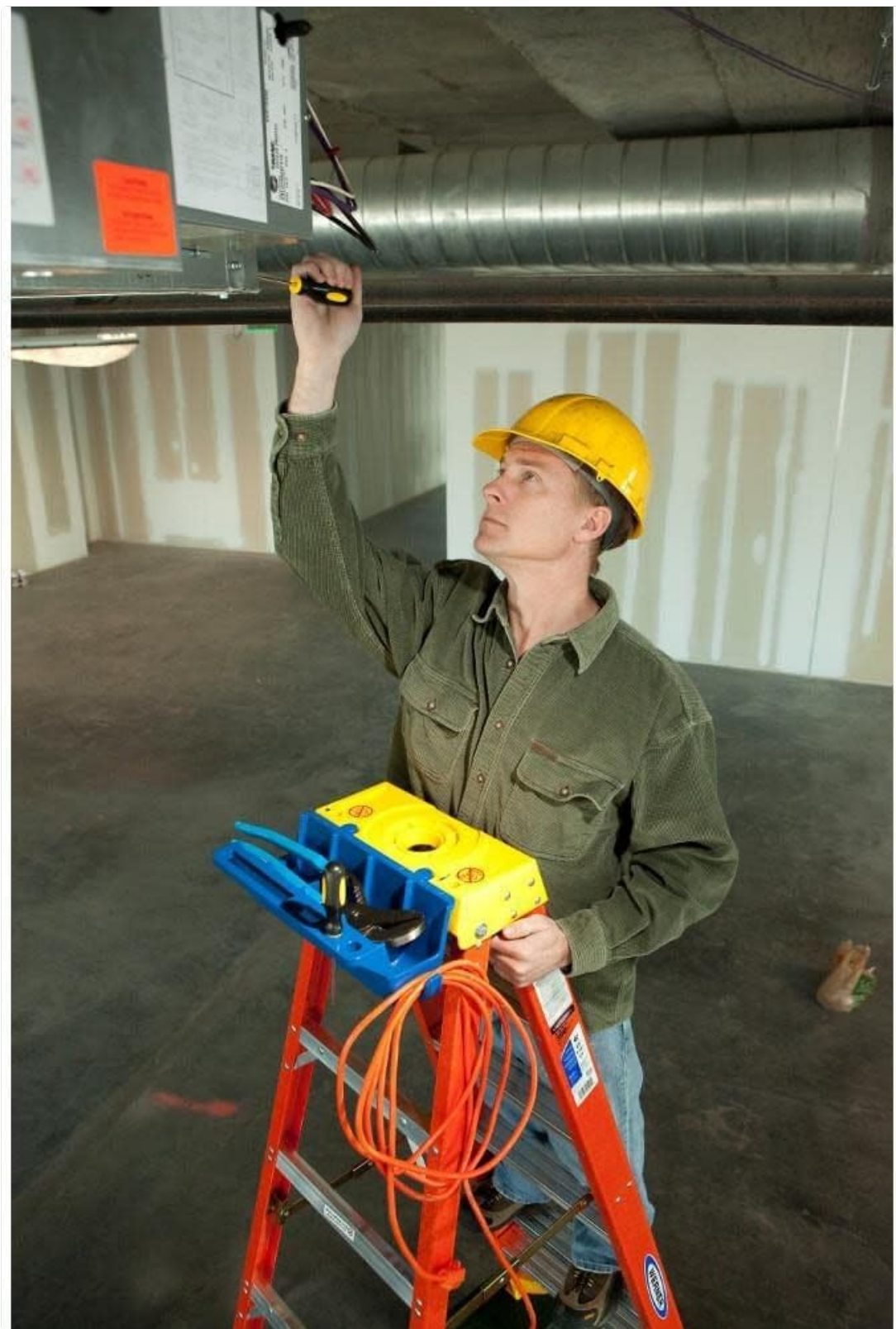


Image: A person wearing a hard hat is shown using the Werner stepladder to perform work on an overhead fixture, demonstrating safe usage.

MAINTENANCE AND STORAGE

To ensure the longevity and safety of your Werner stepladder, regular maintenance is crucial. Keep the ladder clean and free from dirt, grease, or any substances that could cause slipping. Inspect the fiberglass rails for any signs of damage, such as cracks, splinters, or excessive wear. Check all rivets and braces for tightness and integrity. Lubricate moving parts, such as the spreaders, periodically to ensure smooth operation. Store the ladder in a dry place, away from direct sunlight and extreme temperatures, to prevent material degradation. Avoid storing heavy objects on the ladder when it is folded.

TROUBLESHOOTING COMMON ISSUES

Most issues with stepladders relate to improper setup or usage. If the ladder feels unstable, ensure it is fully opened and the spreaders are locked. Verify that all four feet are on a level, firm surface. If steps feel slippery, clean them thoroughly. For any structural damage, such as bent or cracked components, discontinue use immediately and contact Werner customer support for guidance. Do not attempt to repair damaged parts yourself, as this could compromise the ladder's safety.

SPECIFICATIONS

Feature	Detail
Model Number	6210
Height	10 feet (122 inches)
Material	Fiberglass
Load Capacity	300 Pounds (Type IA Duty Rating)
Number of Steps	10
Item Weight	39 Pounds
Color	Gray
Special Feature	Heavy Duty, Nonconductive Rails, EDGE Bracing
Product Dimensions	30.5"W x 122"H

WARRANTY AND SUPPORT

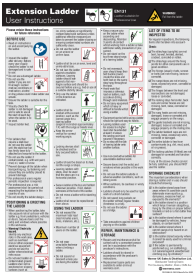
For information regarding product warranty or to obtain support, please contact Werner customer service. Details for customer support can typically be found on the official Werner website or through the retailer where the product was purchased. Always refer to the original packaging or included documentation for specific warranty terms and conditions. For additional assistance, you may visit the [Amazon Customer Support](#) page.

Related Documents - 6210



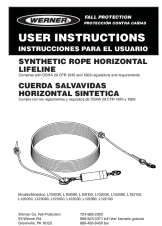
[Werner LEANSAFE X3 Instruction Manual and Safety Guide](#)

Detailed instruction manual for the Werner LEANSAFE X3 multi-purpose combination ladder, covering safe usage, setup, maintenance, and safety guidelines.



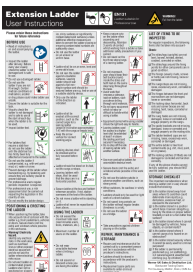
[Werner Extension Ladder User Instructions and Safety Guide | EN131 Professional Use](#)

Comprehensive user instructions and safety guidelines for Werner EN131 professional extension ladders, covering safe use, positioning, maintenance, and inspection.



[Werner Synthetic Rope Horizontal Lifeline User Instructions](#)

Comprehensive user instructions for the Werner Synthetic Rope Horizontal Lifeline system, detailing installation, use, limitations, safety warnings, and maintenance requirements for fall protection.



[Werner Extension Ladder User Instructions and Safety Guide](#)

Comprehensive user instructions and safety guidelines for Werner Extension Ladders, covering safe use, positioning, maintenance, and inspection. Compliant with EN131 standards.



[Werner Telescopic Extension Ladder Instruction Manual](#)

Comprehensive instruction manual for Werner Telescopic Extension Ladders, covering safe operation, maintenance, storage, and safety checks. Includes model details for 2.6m, 2.9m, 3.2m, and 3.8m variants.



[Werner Extension Ladder User Instructions and Safety Guide](#)

Comprehensive user instructions and safety guidelines for Werner extension ladders, covering before use, positioning, erection, usage, maintenance, and storage. Includes EN131 compliance information.

