

## **BLACK+DECKER AF-100-3ZP**

# **BLACK+DECKER AF-100-3ZP Trimmer Line Replacement Spool Instruction Manual**

### **INTRODUCTION**

---

This instruction manual provides essential information for the proper installation and maintenance of your BLACK+DECKER AF-100-3ZP Automatic Feed System (AFS) replacement spools. These factory-wound spools are designed for use with compatible BLACK+DECKER string trimmers, ensuring efficient and reliable line feeding during operation. Please read these instructions carefully before use.

# Includes:



## (3) 0.065 in. Automatic Feed System (AFS®) Replacement Spools

Image: Three BLACK+DECKER AF-100-3ZP replacement spools, factory-wound and ready for installation.

### SETUP AND INSTALLATION

---

Follow these steps to safely replace the trimmer line spool in your compatible BLACK+DECKER string trimmer.

#### Safety First

- Always ensure the string trimmer is turned off and the battery pack is removed before performing any maintenance or installation.
- Wear appropriate safety gear, including eye protection, during installation and operation.

#### Removing the Old Spool

1. Locate the two release tabs on the side of the trimmer head cap.
2. Press these tabs inward simultaneously and lift the cap off the trimmer head.
3. Carefully remove the empty spool from the trimmer head. Note the orientation of the spool for correct installation of the new one.



Image: A hand demonstrates the removal of the trimmer head cap and the old spool.

### Installing the New Spool

1. Take a new AF-100-3ZP replacement spool. Ensure the line is securely wound and free from tangles.
2. Locate the small hole on the side of the spool. Thread the end of the trimmer line through this hole, extending approximately 6 inches (15 cm) of line.
3. Align the new spool with the trimmer head, ensuring the line feeds out through the designated eyelet on the trimmer head. The spool is designed to fit in only one correct orientation.
4. Place the trimmer head cap back onto the trimmer head, pressing down firmly until it clicks into place. Ensure the line is still extended through the eyelet and not pinched.

Simple Install

Factory Wound

Fits Most AFS®  
String Trimmers

30 ft. line

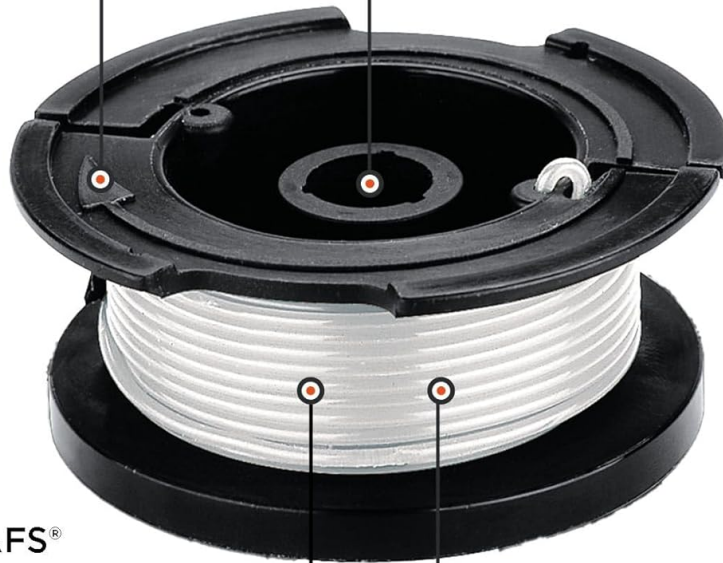


Image: A close-up of the replacement spool highlights its factory-wound design and simple installation features.

### Video Guide: How to Install Trimmer Line

Video: Official BLACK+DECKER guide demonstrating the process of replacing the trimmer line spool.

## OPERATING

The BLACK+DECKER AF-100-3ZP replacement spool is designed for string trimmers featuring the Automatic Feed System (AFS). This system utilizes centrifugal force to automatically feed the cutting line as needed, eliminating the need for manual bumping or adjustments during operation. For detailed instructions on operating your specific string trimmer model, please refer to its dedicated user manual.



## MAINTENANCE

Regular maintenance of your trimmer head ensures optimal performance and extends the life of your replacement spools.

- **Clean the Trimmer Head:** After each use, remove any accumulated grass, dirt, or debris from the trimmer head and around the spool area. This prevents obstructions that could interfere with the automatic line feed mechanism.
- **Inspect the Spool:** Before each use, check the spool for any damage or excessive wear. Ensure the line is properly wound and not tangled.
- **Store Properly:** Store unused replacement spools in a cool, dry place away from direct sunlight to maintain line integrity.

## TROUBLESHOOTING

If you encounter issues with your trimmer line, consider the following:

- **Line Not Feeding Automatically:**
  - Check for debris or grass clippings obstructing the line exit eyelet or the AFS mechanism. Clean thoroughly.
  - Ensure the spool is correctly installed and the cap is securely fastened.
  - Verify that the trimmer line is not tangled or jammed within the spool.
- **Line Breaking Frequently:**
  - Ensure you are using genuine BLACK+DECKER AF-100-3ZP replacement spools, as generic lines may not be compatible or durable enough.
  - Avoid trimming against hard surfaces like concrete or rocks, which can prematurely wear down the line.
  - Check for any sharp edges or damage on the trimmer head that might be cutting the line.

## SPECIFICATIONS

Feature	Detail
Model Number	AF-100-3ZP
Line Diameter	0.065 inches
Line Length per Spool	30 feet
Spool Type	Automatic Feed System (AFS)
Package Quantity	3 spools
Factory Wound	Yes
Optimized For	Cordless cutting efficiency
Manufactured In	Canada

## COMPATIBLE MODELS

---

The AF-100-3ZP replacement spools are compatible with a wide range of BLACK+DECKER Automatic Feed System (AFS) string trimmers, including but not limited to:

- BESTA510, BESTA512, BEASE620
- CST1000, CST1200, CST2000
- GH400, GH500, GH600, GH610, GH900, GH912
- LST120, LST136, LST140, LST201, LST220, LST300, LST400, LST420, LST522, LST1018, LSTE522, LSTE523, LSTE525
- NST1018, NST1024, NST1118, NST1810, NST2018, NST2118
- ST7000, ST7200, ST7700, ST7701, ST8600, ST9000

## WARRANTY AND SUPPORT

---

For warranty information, technical support, or to purchase additional replacement parts, please visit the official BLACK+DECKER website or contact their customer service department. Keep your product model number (AF-100-3ZP) handy for faster assistance.

You can find more information and products at the [BLACK+DECKER Store](#).