

Nintendo Perfect Dark

Perfect Dark Nintendo 64 Game Manual

Official Instructions for the Nintendo 64 Game Pak

1. GAME SETUP

1.1 Inserting the Game Pak

To begin playing Perfect Dark, ensure your Nintendo 64 console is powered off. Carefully insert the Perfect Dark Game Pak into the cartridge slot on the top of the Nintendo 64 console. Press firmly until the cartridge is securely seated. Do not force the cartridge if it does not slide in easily. Ensure the label faces forward.



Image: The reverse side of the Perfect Dark Nintendo 64 Game Pak, showing the connector pins and important safety warnings regarding insertion and removal.

1.2 Powering On and Initial Boot

Once the Game Pak is inserted, connect your Nintendo 64 console to a television and power outlet. Turn on the television and select the correct input channel. Then, press the POWER button on the Nintendo 64 console. The game should load automatically. If the game does not load, power off the console, remove and re-insert the Game Pak, and try again.

1.3 Expansion Pak Requirement

Perfect Dark utilizes the Nintendo 64 Expansion Pak to unlock its full features, including enhanced graphics, higher resolution modes, and certain multiplayer options (such as 3-4 player modes). Without the Expansion Pak, only a limited portion of the game's content will be accessible. The Expansion Pak is inserted into the console's memory expansion port, typically located under a removable cover on the top front of the console.

2. OPERATING INSTRUCTIONS

2.1 Basic Controls

Perfect Dark uses the standard Nintendo 64 controller. Familiarize yourself with the following basic controls:

- **Control Stick:** Move character (forward, backward, strafe left/right).
- **A Button:** Interact, confirm selections, open doors.
- **B Button:** Reload weapon, cancel selections.
- **C Buttons (Yellow):**
 - **C-Up:** Look up.
 - **C-Down:** Look down.
 - **C-Left/C-Right:** Cycle through weapons/gadgets.
- **Z Trigger (Under controller):** Fire weapon, primary action.
- **R Button (Top right shoulder):** Aim, secondary weapon function.
- **Start Button:** Pause game, access in-game menus.

2.2 Single-Player Campaign

The single-player campaign follows Joanna Dark through a series of missions. Each mission has specific objectives that must be completed to progress. Pay attention to mission briefings and on-screen prompts. Failure to complete objectives or compromising critical elements may result in mission failure.

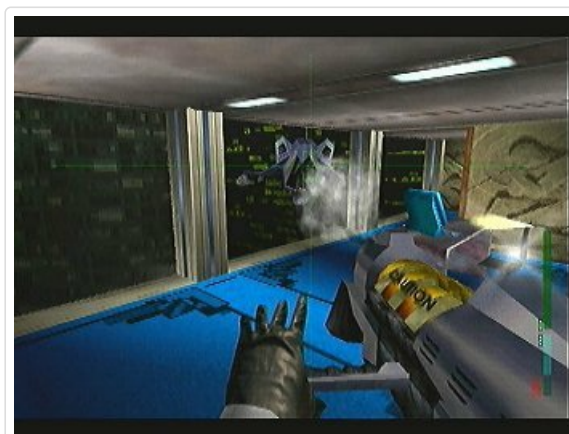


Image: A first-person perspective during a single-player mission, showcasing the game's environment and weapon interface.

2.3 Multiplayer Modes

Perfect Dark offers extensive multiplayer options for up to four players (with Expansion Pak). These modes provide varied gameplay experiences:

- **Combat Simulator:** Highly customizable deathmatch mode. Players can compete against each other, or include up to eight computer-controlled opponents (Simulants) with adjustable difficulty and behavior.
- **Co-operative Mode:** Two players can team up to complete single-player campaign missions together.
- **Counter-operative Mode:** One player controls Joanna Dark, while the other player controls an enemy character within the single-player campaign, attempting to stop Joanna.



Image: A split-screen view demonstrating four-player multiplayer combat within a game arena.

2.4 Weapons and Gadgets

Joanna Dark has access to a wide array of futuristic weapons and gadgets. Each weapon typically has a primary and secondary firing mode. Gadgets provide tactical advantages, such as cloaking devices, X-ray vision, or remote-controlled explosives. Experiment with different combinations to find effective strategies for various situations.

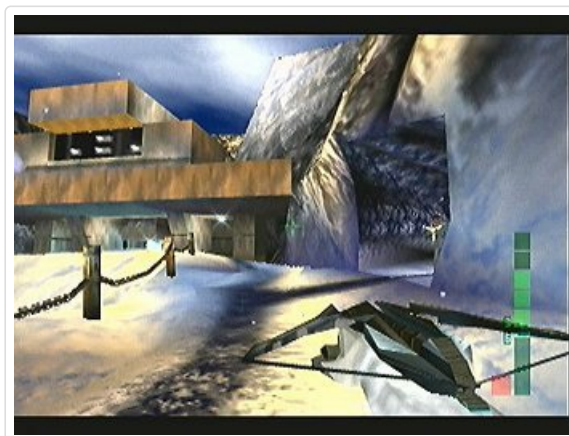


Image: An in-game scene featuring a character equipped with a crossbow, highlighting one of the unique weapons available.

3. GAME PAK MAINTENANCE

3.1 Cleaning the Game Pak

To ensure optimal performance, keep the Game Pak's connector pins clean. If the game fails to load, gently clean the gold connector pins on the bottom of the cartridge with a cotton swab lightly dampened with isopropyl alcohol. Allow the pins to dry completely before re-inserting into the console. Avoid touching the pins with your fingers.

3.2 Storage

Store the Perfect Dark Game Pak in its original case or a protective sleeve when not in use. Keep it away from extreme temperatures, direct sunlight, dust, and moisture. Proper storage helps prevent damage and prolongs the life of the cartridge.

4. TROUBLESHOOTING

4.1 Game Not Loading

- Ensure the Game Pak is fully inserted into the console.
- Power off the console, remove the Game Pak, clean the connector pins (as described in Section 3.1), and re-insert.
- Verify that the Nintendo 64 console is properly connected to the power supply and television.

4.2 Game Freezing or Glitching

- If the game freezes or displays graphical glitches, power off the console and restart.
- Ensure the Game Pak is clean and securely seated.
- Check that the Expansion Pak (if installed) is properly seated.

4.3 Save Data Issues

Perfect Dark saves game progress directly to the Game Pak. If you experience issues with saving or loading game data, ensure the Game Pak is not removed while the console is powered on or during a save operation. Power fluctuations can also affect save data integrity. Always power off the console before removing the Game Pak.

5. PRODUCT SPECIFICATIONS

Feature	Detail
Platform	Nintendo 64
Release Date	May 23, 2000
Manufacturer	Rare
Language	English
Item Weight	0.67 ounces
Product Dimensions	7.2 x 5 x 1.2 inches

6. WARRANTY INFORMATION

This product is covered by Nintendo's standard warranty policy for video game software. For specific details regarding warranty coverage, duration, and terms, please refer to the documentation included with your Nintendo 64 console or visit the official Nintendo support website. Keep your proof of purchase for any warranty claims.

7. CUSTOMER SUPPORT

For further assistance, technical support, or inquiries regarding Perfect Dark or your Nintendo 64 console, please contact Nintendo Customer Support. You can find contact information, FAQs, and troubleshooting guides on the official Nintendo website. Please have your product details and console serial number available when contacting support.

Nintendo Official Website: www.nintendo.com/support/