

## PONY 40709

# PONY Jorgensen 40709 RapidWoodVise Instruction Manual

Model: 40709 | Brand: PONY Jorgensen

## 1. INTRODUCTION

The PONY Jorgensen 40709 RapidWoodVise is a heavy-duty woodworker's vise designed for secure workholding. It features a solid-steel dog in the front jaw, which, when used with a bench stop, allows for secure holding of oversized workpieces on a workbench. The vise incorporates a machined toed-in jaw for a solid grip and is equipped with northern hardwood handles for balanced and comfortable operation. The front and back jaws are pre-drilled to accommodate optional wood facings (not included). This vise is designed to fit easily on workbenches up to three inches thick.

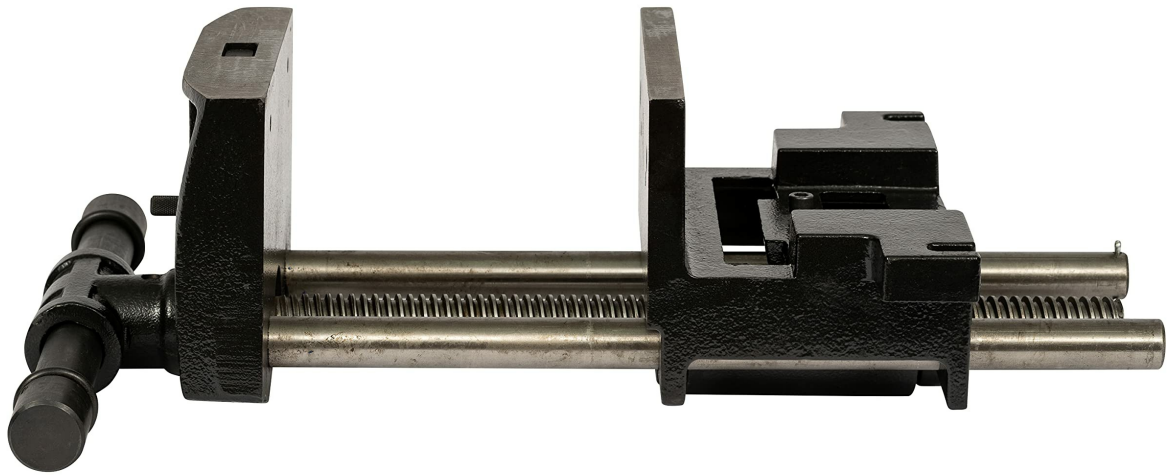


Figure 1: Overview of the PONY Jorgensen 40709 RapidWoodVise.

## 2. INCLUDED COMPONENTS

- Vise Assembly
- Wood Handle

## 3. FEATURES

- **Solid-Steel Dog:** Integrated into the front jaw for use with bench stops, enabling secure clamping of oversized work.
- **Toed-In Jaw Design:** Provides a strong, reliable grip on workpieces.
- **Northern Hardwood Handles:** Offers balance and comfort during operation.
- **Pre-Drilled Jaws:** Holes are provided for easy installation of optional wood facings (not included) to protect delicate workpieces.
- **Bench Compatibility:** Designed to fit securely on workbenches up to three inches thick.
- **Jaw Size:** 3-1/2 inches by 7-1/8 inches.
- **Maximum Opening Capacity:** 9 inches.

## 4. SETUP

1. **Select Mounting Location:** Choose a sturdy section of your workbench that is no more than three inches thick. Ensure sufficient clearance for the vise handle and workpiece.
2. **Prepare Workbench:** The vise requires mounting holes. Use the vise itself as a template to mark the positions for drilling on your workbench. The front and back jaws have pre-drilled holes for this purpose.
3. **Drill Holes:** Carefully drill pilot holes through your workbench at the marked locations. Ensure the drill bit size is appropriate for your mounting hardware (not included).
4. **Attach Vise:** Position the vise against the workbench edge, aligning the holes. Secure the vise using appropriate bolts, washers, and nuts (not included). Ensure all fasteners are tightened securely to prevent movement during use.
5. **Install Wood Handle:** Insert the provided northern hardwood handle into the vise's screw mechanism.



Figure 2: The RapidWoodVise mounted on a workbench, ready for use.

## 5. OPERATING INSTRUCTIONS

1. **Opening and Closing Jaws:** Rotate the wood handle counter-clockwise to open the vise jaws and

clockwise to close them.

2. **Clamping a Workpiece:** Place the workpiece between the jaws. Rotate the handle clockwise until the workpiece is held firmly. Do not overtighten, as this can damage the workpiece or the vise.
3. **Using the Solid-Steel Dog:** For oversized workpieces that cannot fit entirely within the jaws, utilize the solid-steel dog. Insert a bench stop into a corresponding hole on your workbench. Position the workpiece between the solid-steel dog and the bench stop, then tighten the vise to secure the workpiece.
4. **Optional Wood Facings:** If using wood facings (not included), attach them to the pre-drilled holes on the vise jaws using appropriate screws. These facings protect softer materials from marring.



Figure 3: Demonstrating the vise holding a wooden workpiece.



Figure 4: Using the vise to secure a larger wooden beam.

## 6. MAINTENANCE

- **Cleaning:** Regularly clean the vise, especially the screw mechanism and guide rods, to remove sawdust, debris, and grime. Use a brush or compressed air.
- **Lubrication:** Periodically apply a light coat of machine oil or grease to the main screw and guide rods to ensure smooth operation and prevent rust.
- **Inspection:** Routinely inspect the vise for any signs of wear, damage, or loose components. Ensure all mounting bolts remain tight.
- **Storage:** Store the vise in a dry environment to prevent corrosion.

## 7. TROUBLESHOOTING

- **Jaws not gripping securely:** Check for debris between the jaws or on the workpiece. Ensure the vise is properly tightened. If using wood facings, ensure they are not worn or damaged.
- **Stiff or difficult operation of the handle:** The screw mechanism or guide rods may require cleaning and lubrication. Apply machine oil as described in the Maintenance section.

- **Vise movement during use:** Check the mounting bolts securing the vise to the workbench. Tighten any loose fasteners. Ensure the workbench itself is stable.

## 8. SPECIFICATIONS

Attribute	Value
Brand	PONY
Model Number	40709
Material	Blend (Cast Iron)
Item Weight	30 Pounds
Product Dimensions (L x W x H)	22 x 6 x 10.5 inches
Jaw Size	3-1/2 x 7-1/8 inches
Maximum Opening Capacity	9 inches
Power Source	Hand Powered
UPC	044295407090

## 9. PRODUCT VIDEO GUIDE

Your browser does not support the video tag.

Video 1: Official product use guide for Pony Jorgensen vises, demonstrating various models and their applications.

## 10. WARRANTY AND SUPPORT

For warranty information or technical support, please refer to the documentation included with your purchase or visit the official PONY Jorgensen website. Keep your purchase receipt for warranty claims.