

OLYMPUS E-3

OLYMPUS E-3 Digital Camera User Manual

Model: E-3

1. INTRODUCTION

This manual provides a comprehensive guide to the OLYMPUS E-3 digital single-lens reflex camera. Drawing insights from the 'OLYMPUS E-3 Master Book', it aims to clarify the camera's advanced functions, peripheral equipment integration, and practical photography techniques. This document serves as a reference for users seeking to maximize their photographic capabilities with the E-3.



Figure 1.1: Cover of the OLYMPUS E-3 Master Book, a comprehensive guide for the camera.

2. KEY FEATURES

The OLYMPUS E-3 is designed with advanced photographic capabilities. Key features highlighted in the Master Book include:

- **Newly Added Functions:** Explore the latest functionalities integrated into the E-3, enhancing user control and creative possibilities.
- **Peripheral Equipment Integration:** Understand how various peripheral devices and accessories can be seamlessly integrated to expand the camera's utility and photographic scope.

- **Advanced Photography Techniques:** Learn master-level photography techniques specifically tailored for the E-3, covering aspects from composition to exposure.
 - **Extensive Lens Compatibility:** The E-3 supports a wide range of ZUIKO DIGITAL lenses, including over 16 master lenses, offering versatility for various shooting scenarios.
-

3. SETUP

Before using your OLYMPUS E-3 camera, follow these essential setup steps:

1. **Battery Installation:** Insert the fully charged battery into the battery compartment, ensuring correct orientation.
 2. **Memory Card Insertion:** Open the memory card slot cover and insert a compatible CompactFlash (CF) card or xD-Picture Card until it clicks into place.
 3. **Lens Attachment:** Align the mounting marks on the lens and the camera body, then rotate the lens clockwise until it locks securely.
 4. **Initial Settings:** Power on the camera and follow the on-screen prompts to set the date, time, and language.
-

4. OPERATING THE CAMERA

This section covers the basic operation of your OLYMPUS E-3 camera:

- **Power On/Off:** Use the power switch located near the shutter button to turn the camera on or off.
 - **Shooting Modes:** Select your desired shooting mode (e.g., Program Auto, Aperture Priority, Shutter Priority, Manual) using the mode dial.
 - **Focusing:** The E-3 features a high-speed, 11-point biaxial cross sensor AF system. Use the AF mode selector to choose between Single AF, Continuous AF, or Manual Focus.
 - **Exposure Settings:** Adjust aperture, shutter speed, and ISO sensitivity using the control dials and buttons to achieve optimal exposure.
 - **Image Review:** Press the Playback button to view captured images on the LCD monitor. Use the arrow keys to navigate through photos.
-

5. MAINTENANCE

Proper maintenance ensures the longevity and optimal performance of your OLYMPUS E-3 camera:

- **Cleaning the Camera Body:** Use a soft, dry cloth to wipe the camera body. For stubborn dirt, slightly dampen the cloth with water. Avoid using solvents.
- **Lens Cleaning:** Use a lens brush or blower to remove dust. For smudges, use a specialized lens cleaning solution and a microfiber cloth.
- **Sensor Cleaning:** The E-3 features a Supersonic Wave Filter for dust reduction. For persistent dust, consult an authorized service center.
- **Battery Care:** Store batteries in a cool, dry place. Recharge them regularly, even if not in use, to maintain battery health.

- **Storage:** When not in use for extended periods, store the camera in a dry, dust-free environment, preferably with a desiccant to prevent mold.

6. TROUBLESHOOTING

This section addresses common issues you might encounter with your OLYMPUS E-3 camera:

Problem	Possible Cause	Solution
Camera does not power on.	Battery is depleted or incorrectly inserted.	Charge the battery fully and ensure it is inserted correctly.
Images are blurry.	Incorrect focus, camera shake, or dirty lens.	Check focus mode, use a tripod, or clean the lens.
Memory card error.	Card is full, corrupted, or incompatible.	Delete files, format the card (backup data first), or try a different card.
Flash does not fire.	Flash mode is off or battery is low.	Check flash settings and ensure battery is sufficiently charged.

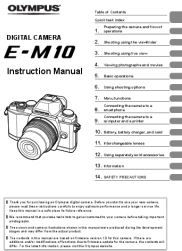
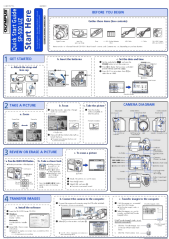

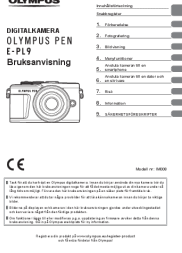
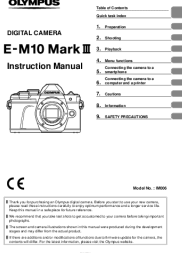
If the problem persists after attempting these solutions, please refer to the official OLYMPUS E-3 service manual or contact customer support.

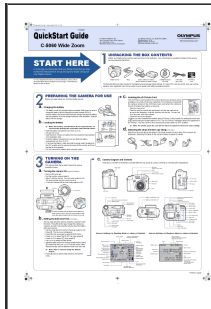
7. SPECIFICATIONS

The OLYMPUS E-3 is a robust digital single-lens reflex camera. For detailed technical specifications, including sensor type, resolution, ISO range, shutter speeds, and dimensions, please refer to the official OLYMPUS product page or the comprehensive technical documentation provided with the camera at the time of purchase. This manual focuses on operational guidance rather than exhaustive technical data.

8. SUPPORT AND WARRANTY

For product support, including technical assistance, repairs, or inquiries about accessories, please visit the official OLYMPUS website or contact their customer service department. Contact information can typically be found on the manufacturer's website or in the original product packaging. Information regarding the product warranty, including terms, conditions, and registration procedures, is provided with the original purchase documentation. Please retain your proof of purchase for warranty claims.

	<p>Olympus E-M10 Digital Camera Instruction Manual</p> <p>Comprehensive guide to operating the Olympus E-M10 digital camera, covering setup, shooting modes, playback, connectivity, and maintenance. Learn to capture high-quality photographs and videos with this user-friendly manual.</p>
	<p>Olympus SP-500 UZ Quick Start Guide</p> <p>A quick start guide for the Olympus SP-500 UZ digital camera, covering initial setup, taking pictures, reviewing/erasing images, and transferring photos to a computer.</p>
	<p>Olympus E-410 Digital SLR Camera: Features and Specifications</p> <p>Explore the features and detailed specifications of the Olympus E-410, a compact and lightweight digital SLR camera with a 10-megapixel Live MOS sensor and Live View functionality.</p>
	<p>Olympus PEN E-PL9 Bruksanvisning</p> <p>En komplett användarguide för Olympus PEN E-PL9 digitalkameran, som täcker allt från grundläggande förberedelser och fotograferingstekniker till avancerade menyfunktioner och anslutningsmöjligheter. Lär dig maximera din kameras potential.</p>
	<p>Olympus E-M10 Mark III Digital Camera Instruction Manual</p> <p>Comprehensive instruction manual for the Olympus E-M10 Mark III digital camera, covering preparation, shooting modes, playback, menu functions, connectivity, and safety.</p>



[Olympus C-5060 Wide Zoom QuickStart Guide](#)

A quick start guide for the Olympus C-5060 Wide Zoom digital camera, covering unboxing, setup, basic operation, and software installation.