



Manuals.plus /

- › Haynes /
- › Haynes Renault Clio Service and Repair Manual (2001-2005)

Haynes Clio 2001-2005

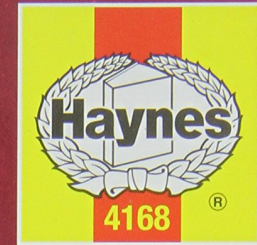
Haynes Renault Clio Service and Repair Manual (2001-2005)

Petrol and Diesel Models: 2001 to 2005

INTRODUCTION TO YOUR MANUAL

This Haynes Service and Repair Manual provides comprehensive, step-by-step instructions for the maintenance, service, and repair of Renault Clio Petrol and Diesel models produced between 2001 and 2005. It is designed to assist both the novice and experienced mechanic in performing various tasks on their vehicle.

RENAULT CLIO



June 2001 to 2005 (Y to 55 reg) Petrol & Diesel

Haynes **Service and Repair Manual**



Includes **Roadside Repairs** and **MOT Test Checks**

Image: Front cover of the Haynes Renault Clio Service and Repair Manual. The cover features a red Renault Clio and the Haynes logo, indicating the manual's focus on service and repair for models from 2001 to 2005.

The manual is structured to guide you through each procedure with clear text and supporting illustrations, ensuring accuracy and efficiency in your work.

UNDERSTANDING THE MANUAL'S STRUCTURE



This manual is a practical guide developed from hands-on experience, based on the complete stripdown and rebuild of Renault Clio vehicles using commonly available tools. It aims to simplify complex procedures into manageable steps.



Keep your Renault Clio in perfect running order and maintain its value. Haynes shows you how and saves you money.

Step-by-step instructions clearly linked to hundreds of photos and illustrations show you how to do each job.

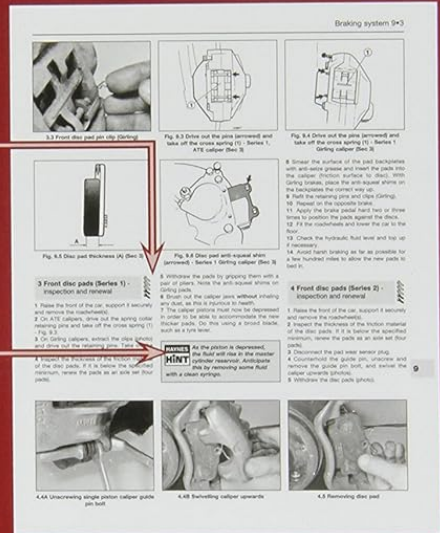
Spanner ratings grade all tasks by difficulty and experience level.

From easy servicing jobs for the novice...  ...to difficult tasks for the expert. 

Haynes Hints give valuable tips and short-cuts that help make the job easier.

Tool Tips contain useful information such as ways of removing parts without using special tools.

Written from **hands on experience**, based on the stripdown and rebuild of Renault Clio vehicles using commonly-available tools.



Inside this Manual

- Basic maintenance** - simple weekly checks
- Braking system** - safety checks and repairs
- Service your car** - complete step-by-step guide
- Fuel and ignition systems** - explained
- Fault finding** - pinpoint specific problems easily
- Electrical system** - fault finding and repairs
- Roadside Emergencies** - how to deal with them
- Engine** - tune-up, minor and major repairs
- Pass the MOT** - step-by-step test checks
- Wiring diagrams** - easy-to-follow layout
- Reference section** - includes a detailed glossary
- Fully indexed** - find information quickly


ISBN 978 0 85733 930 0  9 780857 339300	Models covered by this Manual Hatchback (plus most features of Van), including special/limited editions Petrol engines: 1.2 litre (1149cc), 1.4 litre (1390cc) & 1.6 litre (1598cc) Turbo-Diesel engines: 1.5 litre (1461cc) <i>Also covers Campus and Campus Sport model to 2007</i> <i>Does NOT cover 1.9 turbo-diesel engine, Renaultsport 172, 182 or V6 models, or 'new' Clio range introduced November 2005</i>	UPC CODE  6 99414 00443 0
Haynes Publishing, Sparkford, Yeovil, Somerset BA22 7JJ England www.haynes.co.uk		

Image: Back cover of the Haynes Renault Clio Service and Repair Manual. This image highlights key features such as step-by-step instructions, spanner ratings for difficulty, Haynes Hints, and Tool Tips, along with a list of covered topics and models.

Key features to assist you:

- **Step-by-step instructions:** Each task is broken down into clear, sequential steps, accompanied by numerous photographs and illustrations.
- **Spanner ratings:** Tasks are graded by difficulty, from simple for novices to complex for experienced users, helping you assess your capability.
- **Haynes Hints:** Valuable tips and shortcuts are provided to make jobs easier and more efficient.
- **Tool Tips:** Information on specific tools and methods for removing parts without specialized

equipment.

SETUP AND PREPARATION FOR VEHICLE WORK

Before commencing any work on your Renault Clio, it is crucial to prepare adequately. This involves ensuring safety, gathering necessary tools, and understanding the specific section of the manual relevant to your task.

Safety First

Always prioritize safety. Refer to the manual's general safety precautions section before starting any procedure. This includes using appropriate personal protective equipment (PPE), ensuring the vehicle is securely supported, and disconnecting the battery when necessary.

Tool Requirements

The manual assumes the use of commonly available tools. Review the 'Tool Tips' and the specific procedure's requirements to ensure you have all necessary equipment before beginning. Specialized tools, if required, will be noted.

OPERATING AND INTERPRETING INSTRUCTIONS

To effectively use this manual, follow these guidelines for navigating and interpreting the information:

- 1. Locate the relevant section:** Use the detailed index to quickly find the chapter and page number for the specific repair or maintenance task you wish to perform.
- 2. Read through the entire procedure:** Before starting, read all steps for the task to understand the overall process and identify any prerequisites or warnings.
- 3. Examine illustrations:** Pay close attention to photographs and diagrams, as they provide visual guidance for component locations, disassembly, and reassembly.
- 4. Heed warnings and notes:** Important safety warnings, cautions, and helpful notes are highlighted throughout the manual. Do not overlook these.

MAINTENANCE PROCEDURES

The manual covers a wide range of maintenance tasks to keep your Renault Clio in optimal condition. These include:

- Basic maintenance and simple weekly checks.
- Complete step-by-step guides for servicing your vehicle.
- Procedures for passing the MOT (Ministry of Transport) test checks.

Regular maintenance as outlined in this manual can help extend the life of your vehicle and prevent more significant issues.

TROUBLESHOOTING AND FAULT FINDING

When encountering a problem with your vehicle, the manual provides dedicated sections to assist with diagnosis:

- **Fault finding:** Pinpoint specific problems easily with structured diagnostic guides.

- **Roadside Emergencies:** Guidance on how to deal with common breakdowns and urgent issues.
- **Electrical system:** Detailed fault finding and repair procedures for electrical components.

By systematically following the troubleshooting steps, you can identify the root cause of many common vehicle issues.

SPECIFICATIONS AND TECHNICAL DATA

This manual includes a comprehensive reference section with detailed technical specifications for the covered Renault Clio models. This data is essential for accurate repairs and adjustments.

Covered Models and Engines

The manual specifically covers:

- **Hatchback models:** Including most features of the Van variant, and special/limited editions.
- **Petrol engines:** 1.2 litre (1149cc), 1.4 litre (1390cc), and 1.6 litre (1598cc).
- **Turbo-Diesel engines:** 1.5 litre (1461cc).

It also includes information for Campus and Campus Sport Models up to 2007. Please note, this manual **does NOT cover** the 1.6 litre diesel engine, Renaultsport 172, 182, or the 'new' Clio range introduced in November 2005.

Included Data

You will find detailed information on:

- Braking system specifications.
- Fuel and ignition system details.
- Engine tune-up, minor, and major repair data.
- Wiring diagrams for electrical systems.
- A fully indexed section for quick information retrieval.

WARRANTY INFORMATION

This Haynes Service and Repair Manual is a guide for vehicle maintenance and repair. It does not provide or imply any warranty on the vehicle itself or on any repair work performed using its instructions. The accuracy of the information presented is based on the publisher's best efforts and experience. Users are responsible for exercising their own judgment and ensuring proper safety procedures are followed during any repair or maintenance activity.

SUPPORT AND FURTHER ASSISTANCE

For questions regarding the content or use of this manual, please refer to the publisher, J H Haynes & Co Ltd. While this manual aims to be comprehensive, complex repairs may require professional assistance. Always consult a qualified mechanic if you are unsure about any procedure or if a task exceeds your skill level.

Additional resources for automotive repair and maintenance can often be found through reputable automotive forums, manufacturer websites, or local automotive parts suppliers.

