

## Manuals+

[Q & A](#) | [Deep Search](#) | [Upload](#)

manuals.plus /

- › [Elna](#) /
- › [Elna Sewing Machine User Manual](#)

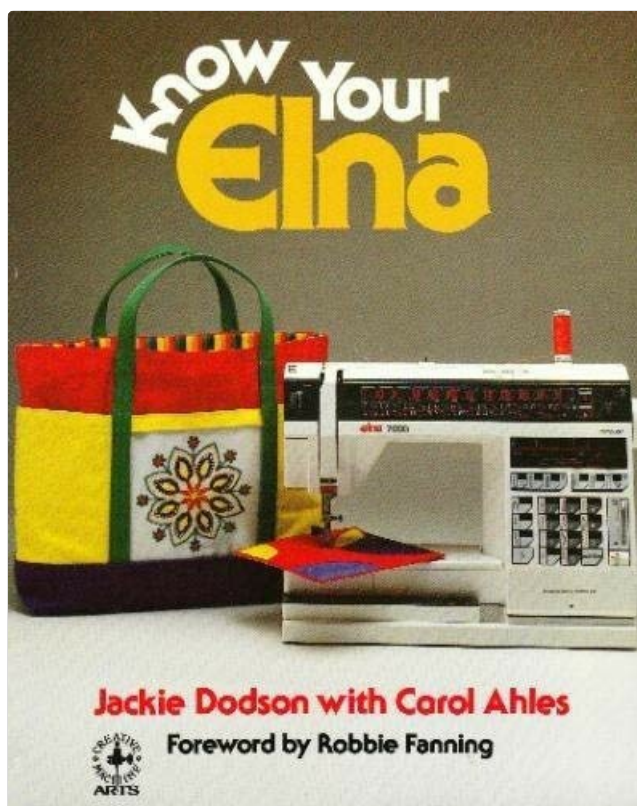
## Elna Elna Sewing Machines

# Elna Sewing Machine User Manual

A Comprehensive Guide to Your Elna Sewing Machine

## INTRODUCTION

This manual serves as a comprehensive guide for operating and maintaining your Elna sewing machine. Drawing insights from the "Know Your Elna" publication, it aims to provide detailed instructions on basic, advanced, and creative stitching techniques, helping you unlock the full potential of your machine for various fabric projects.



This image provides a visual reference of an Elna sewing machine, similar to models discussed in the 'Know Your Elna' guide. It features a white sewing machine with various controls and a colorful fabric project.

## SETUP AND PREPARATION

Before beginning any sewing project, proper setup of your Elna machine is crucial for optimal performance and safety.

## Power Connection

- Ensure the machine is placed on a stable, flat surface.
- Connect the power cord securely to the machine and then to a suitable electrical outlet.
- Turn on the main power switch, usually located on the side or back of the machine.

## Needle Installation

1. Raise the needle to its highest position using the handwheel.
2. Loosen the needle clamp screw.
3. Insert the new needle with the flat side facing the back of the machine, pushing it up as far as it will go.
4. Tighten the needle clamp screw firmly.

## Bobbin Winding and Insertion

Refer to your specific Elna model's manual for detailed bobbin winding and insertion instructions, as procedures may vary slightly between models. Generally, thread is wound onto an empty bobbin using the bobbin winder spindle, and then inserted into the bobbin case or drop-in bobbin compartment.

## OPERATING YOUR ELNA MACHINE

---

Your Elna machine is designed for versatility, offering a range of stitching options from basic utility stitches to intricate decorative patterns.

### Basic Stitching

- **Straight Stitch:** Ideal for seams and topstitching. Adjust stitch length and width as needed.
- **Zigzag Stitch:** Used for finishing raw edges, appliqué, and decorative purposes.
- **Reverse Stitch:** Engage the reverse lever or button to secure stitches at the beginning and end of seams.

### Advanced Techniques

Explore advanced functions such as buttonhole creation, zipper insertion, and free-motion quilting. Consult your machine's specific accessory guide for appropriate presser feet and settings.

### Creative Stitching

Elna machines are renowned for their creative capabilities. Experiment with decorative stitches, twin needle sewing, and embroidery functions to personalize your projects. The "Know Your Elna" book provides extensive guidance on these creative applications.

## MAINTENANCE AND CARE

---

Regular maintenance ensures the longevity and smooth operation of your Elna sewing machine.

- **Cleaning:** Regularly remove lint and dust from the bobbin area, feed dogs, and tension discs using a small brush or vacuum.
- **Oiling:** Refer to your specific model's manual for oiling points and frequency. Use only high-quality sewing machine oil.
- **Needle Replacement:** Change needles frequently (every 8-10 hours of sewing or after every project) to prevent skipped stitches and fabric damage.

- **Storage:** When not in use, cover your machine to protect it from dust and store it in a dry, stable environment.

## TROUBLESHOOTING COMMON ISSUES

Many common sewing machine issues can be resolved with simple adjustments.

Problem	Possible Cause	Solution
Skipped Stitches	Incorrect needle, bent needle, improper threading, wrong needle size for fabric.	Replace needle, rethread machine, use correct needle type/size.
Thread Breaking	Improper threading, tension too tight, burr on needle plate, poor quality thread.	Rethread, adjust tension, check for burrs, use good quality thread.
Fabric Puckering	Tension too tight, incorrect stitch length, dull needle.	Loosen tension, increase stitch length, replace needle.

For more complex issues, consult a certified Elna service technician.

## SPECIFICATIONS

While specific technical specifications vary greatly between Elna sewing machine models, this section provides general information relevant to the "Know Your Elna" guide, which covers a range of Elna machines.

- **Machine Type:** Mechanical or Computerized Sewing Machine (varies by model)
- **Stitch Types:** Utility, Decorative, Buttonhole (extensive range depending on model)
- **Needle System:** Standard home sewing machine needles (e.g., 130/705H)
- **Power Requirement:** 110-240V AC, 50/60Hz (region dependent)
- **Dimensions & Weight:** Varies significantly by model. Refer to your specific machine's original manual for precise measurements.

*Note: For detailed specifications of your particular Elna sewing machine model, please refer to the original manufacturer's manual that came with your machine.*

## WARRANTY AND SUPPORT

For information regarding your Elna sewing machine's warranty coverage, terms, and conditions, please consult the warranty card or documentation provided at the time of purchase. Warranty details are specific to the machine model and region.

For technical support, service, or to locate an authorized Elna dealer or service center, please visit the official Elna website or contact their customer service directly. Contact information can typically be found in your machine's original manual or on the manufacturer's website.

While the "Know Your Elna" book provides extensive operational guidance, it does not replace official manufacturer support or warranty services.

