

## Manuals+

[Q & A](#) | [Deep Search](#) | [Upload](#)

Manuals.plus /

> [MGM](#) /

> MGM Fled DVD Instruction Manual

## MGM DVD

# MGM Fled DVD Instruction Manual

## INTRODUCTION

---

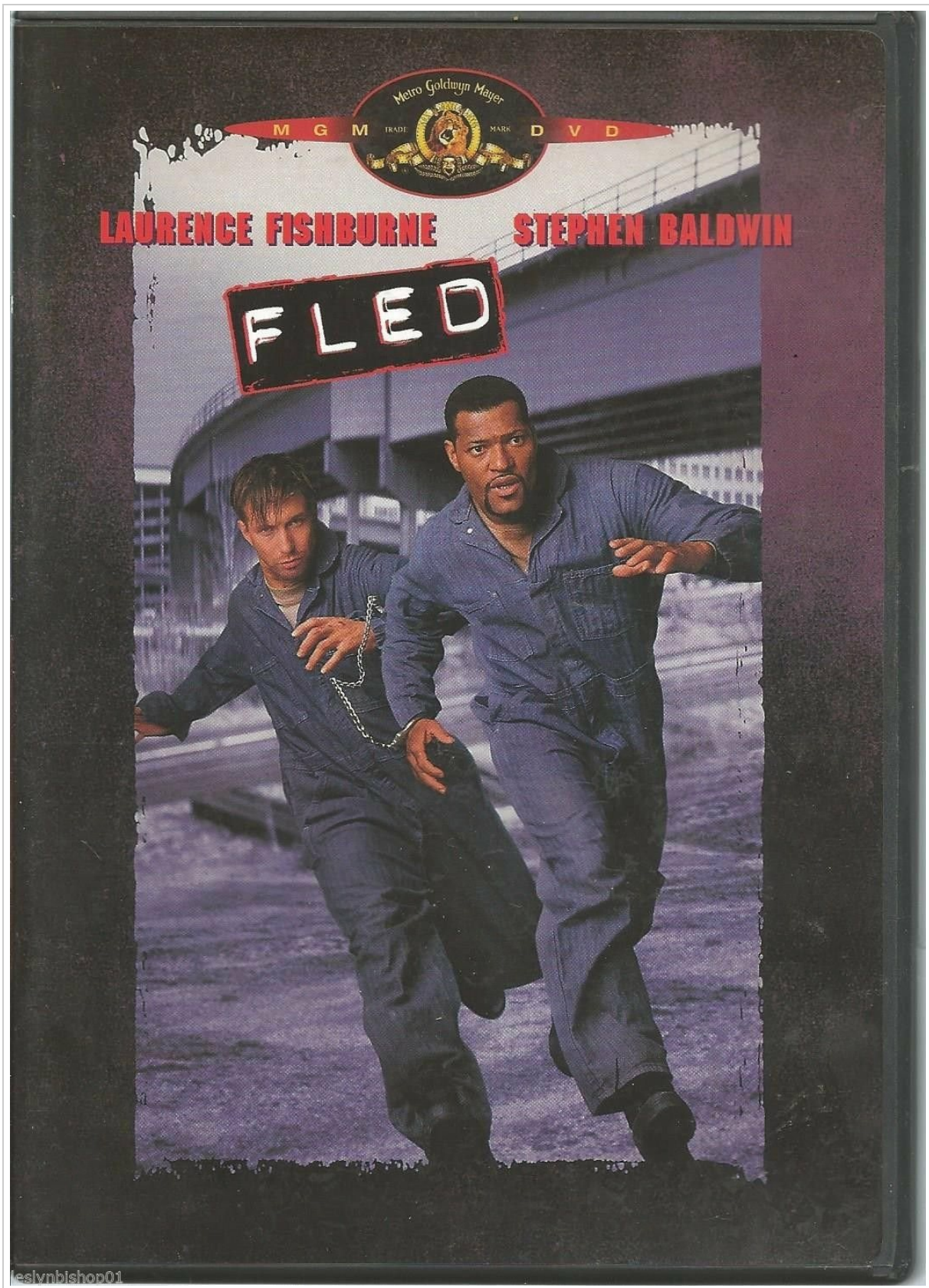
This manual provides comprehensive instructions for the MGM Fled DVD (Model 0792833848), covering setup, playback, maintenance, and troubleshooting to ensure optimal viewing experience. The film features Laurence Fishburne and Stephen Baldwin in a high-impact thriller about two mismatched convicts on the run from both sides of the law. It includes high-speed adventure, stunts, and non-stop action.

## SETUP

---

### 1. Unpacking and Inspection

Carefully remove the Fled DVD from its packaging. Inspect the disc for any visible damage or scratches. Ensure the DVD case is intact.



**Figure 1:** Fled DVD Front Cover. This image displays the DVD's front cover art, showing the two main actors, Laurence Fishburne and Stephen Baldwin, in character.

## 2. Inserting the DVD

1. Open the disc tray of your DVD player or computer.
2. Hold the DVD by its edges to avoid touching the playback surface.
3. Place the DVD onto the tray with the label side facing up.
4. Gently close the disc tray.

### 3. Connecting to Display and Audio

Ensure your DVD player is correctly connected to your television or display device and audio system. Refer to your DVD player's manual for specific connection instructions.

## OPERATING INSTRUCTIONS

---

### 1. Basic Playback

1. Turn on your DVD player and television/display.
2. Select the correct input source on your television (e.g., HDMI 1, AV).
3. The DVD menu should appear automatically. Use your remote control's navigation buttons to select "Play Movie".
4. To pause, fast-forward, rewind, or stop playback, use the corresponding buttons on your remote control.

### 2. Language and Subtitle Selection

The Fled DVD supports English (Dolby Digital 5.1) and French (Dolby Digital 5.1) audio. Subtitles are available in English and French. These options can typically be selected from the DVD's main menu or by pressing the "Audio" or "Subtitle" button on your remote control during playback.

### 3. Special Features

This DVD includes special features such as a collectible booklet, behind-the-scenes content, and the original theatrical trailer. Access these features from the main DVD menu.



**Video 1:** Official Trailer for Fled. This video provides a preview of the film's action and plot, showcasing key scenes and characters.

## MAINTENANCE

---

### 1. Disc Care

- Always handle the DVD by its outer edges or the center hole.
- Store the disc in its original case when not in use to prevent scratches and dust accumulation.
- Keep the disc away from direct sunlight, extreme temperatures, and high humidity.
- To clean the disc, gently wipe the playback surface with a soft, lint-free cloth from the center outwards. Do not use abrasive cleaners or solvents.

### 2. Case Care

Keep the DVD case clean and free from debris. A clean case helps protect the disc from environmental factors.

## TROUBLESHOOTING

---

- **Disc Not Playing:** Ensure the disc is inserted correctly (label side up). Check for visible scratches or smudges on the disc and clean if necessary. Try playing another DVD to confirm the player is functioning correctly.
- **No Audio/Video:** Verify all cables connecting the DVD player to the TV/audio system are securely attached. Ensure the correct input source is selected on your television. Check the audio settings on your DVD player and TV.

- **Skipping or Freezing:** This can be caused by dirt or scratches on the disc. Clean the disc carefully. If the issue persists, the disc may be damaged.
- **Region Code:** This DVD is NTSC format. Ensure your DVD player is compatible with NTSC discs.

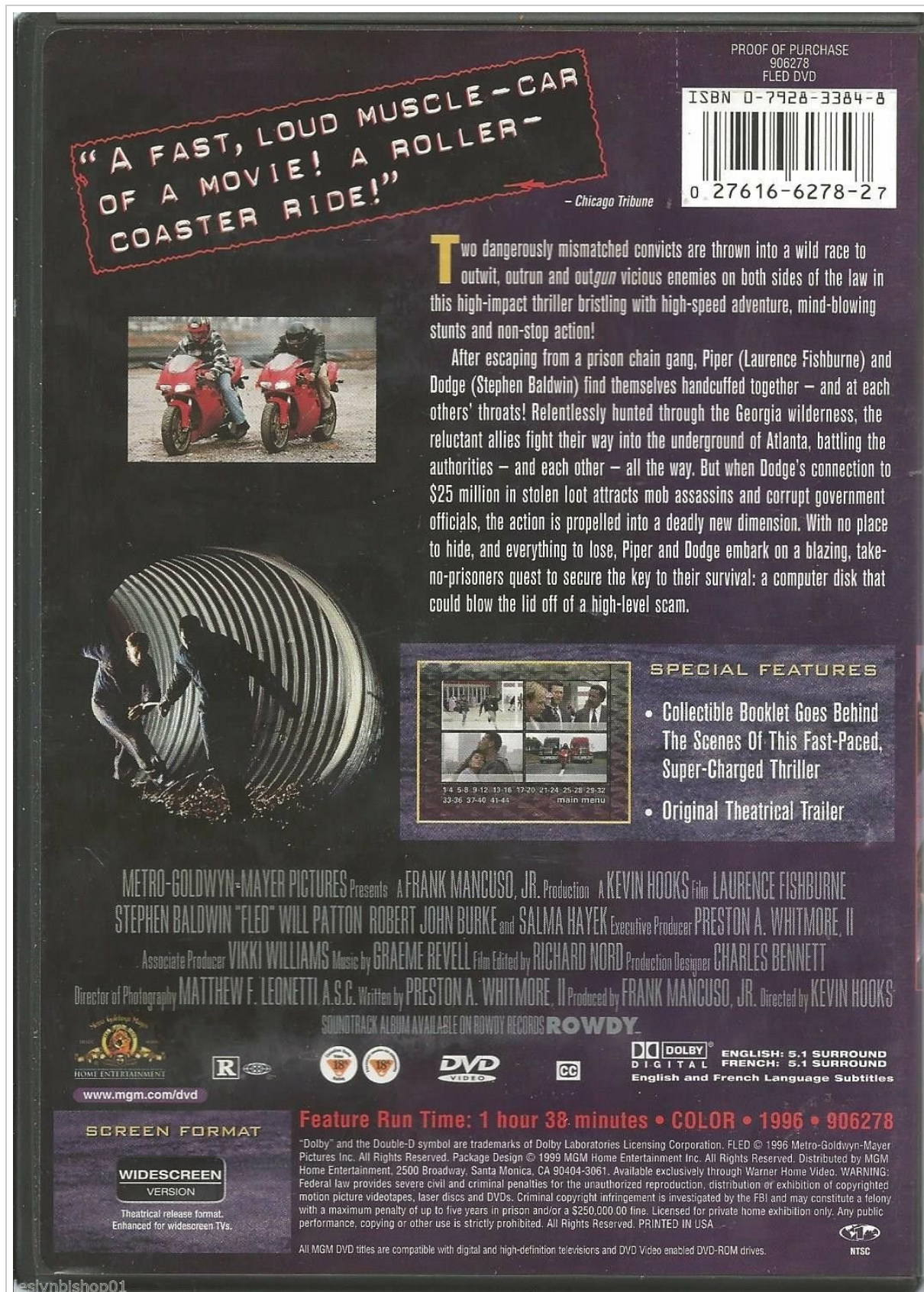


Figure 2: Fled DVD Back Cover. This image provides details on the film's plot, lists special features, and outlines technical specifications such as run time and audio formats.

## SPECIFICATIONS

Feature	Detail
<b>Title</b>	Fled
<b>Format</b>	DVD
<b>Studio</b>	MGM (Video & DVD)
<b>ASIN</b>	0792833848
<b>UPC</b>	027616627827
<b>Run Time</b>	1 hour and 38 minutes
<b>Release Date</b>	January 1, 1996
<b>MPAA Rating</b>	R (Restricted)
<b>Aspect Ratio</b>	1.85:1
<b>Media Format</b>	Closed-captioned, Color, DVD, Letterboxed, NTSC, Widescreen
<b>Audio Languages</b>	English (Dolby Digital 5.1), French (Dolby Digital 5.1)
<b>Subtitles</b>	English, French
<b>Number of Discs</b>	1
<b>Product Dimensions</b>	7.5 x 5.38 x 0.6 inches; 3.2 ounces
<b>Director</b>	Kevin Hooks
<b>Actors</b>	Laurence Fishburne, Robert Hooks, Robert John Burke, Stephen Baldwin, Will Patton
<b>Writers</b>	Preston A. Whitmore II
<b>Genre</b>	Action & Adventure, Mystery & Thrillers

## WARRANTY AND SUPPORT

For information regarding warranty, returns, or technical support for your Fled DVD, please refer to the retailer where the product was purchased or contact the manufacturer, MGM (Video & DVD), directly. Specific warranty details are typically provided at the point of sale or within the product packaging.