



# AsiaRF AWM688 WiFi AP Router Module User Manual

[Home](#) » [AsiaRF](#) » AsiaRF AWM688 WiFi AP Router Module User Manual 

## Contents

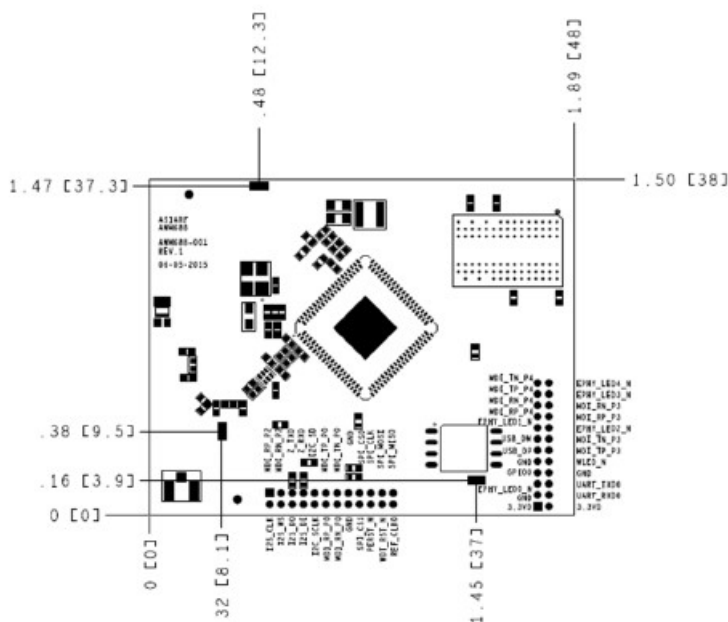
- 1 [AsiaRF AWM688 WiFi AP Router Module User Manual](#)
- 2 [DESCRIPTION](#)
- 3 [Size:](#)
- 4 [Evaluated Board \(Host device\):](#)
- 5 [For additional hosts other than the specific host originally granted with a limited module, a Class II permissive change is required on the module grant to register the additional host as a specific host also approved with the module. The host must meet the necessary requirements to satisfy the module limiting conditions: shield and power supply regulation.](#)
- 6 [Regulatory Module Integration Instructions](#)
- 7 [Device Classifications](#)
- 8 [FCC Definitions](#)
- 9 [Simultaneous Transmission Evaluation](#)
- 10 [Read More About This Manual & Download PDF:](#)
- 11 [Documents / Resources](#)
- 12 [Related Posts](#)

AWM688 is a small-size 3.5 x 4.5cm, 802.11n AP board that achieves a data rate up to 150Mbps. with high performance MIPS CPU 580MHz speed..

By supporting 64/128-bits WEP, TKIP,WPA, WPA2,AES and WPS, helps to protect your data and privacy during transmission.

This module could be mounted on system board like IPTV, STB, Media Player, Femto, XDSL, Cable Modem, Industrial PC, Ethernet Switch, Printer Server, Connected TV, Smart Phone and Portable CPE For WiMAX/LTE. Also **WiFi IP camera, WiFi storage** function embedded.

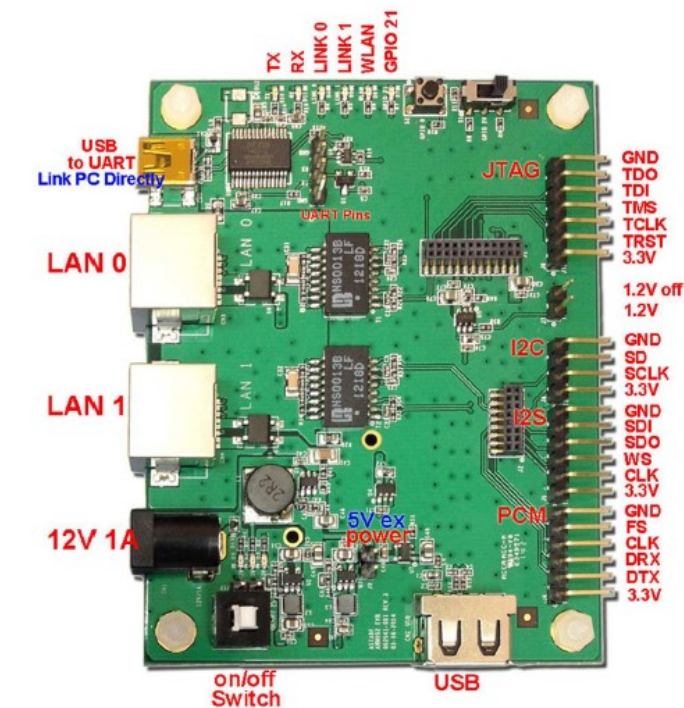
1. Size: 38\*48 mm  
Double row 1.27mm pitch on the 35mm side
2. Reserved: Available for use
3. Reserved is ACTIVE LOW
4. LEDs and WPS/Reset to Default are active LOW Reset /Reset to default function is share AP/Client selection pin



## Evaluated Board (Host device):

Host Name: WIFI CONTROL BOX

Model No.: WCB688



### Federal Communications Commission (FCC) Interference Statement

THIS DEVICE COMPLIES WITH PART 15 OF THE FCC RULES. OPERATION IS SUBJECT TO THE FOLLOWING TWO CONDITIONS: (1) THIS DEVICE MAY NOT CAUSE HARMFUL INTERFERENCE, AND (2) THIS DEVICE MUST ACCEPT ANY INTERFERENCE RECEIVED, INCLUDING INTERFERENCE THAT MAY CAUSE UNDESIRE OPERATION.

NOTE: THE GRANTEE IS NOT RESPONSIBLE FOR ANY CHANGES OR MODIFICATIONS NOT EXPRESSLY APPROVED BY THE PARTY RESPONSIBLE FOR COMPLIANCE. SUCH MODIFICATIONS COULD VOID THE USER'S AUTHORITY TO OPERATE THE EQUIPMENT.

**For additional hosts other than the specific host originally granted with a limited module, a Class II permissive change is required on the module grant to register the additional host as a specific host also approved with the module. The host must meet the necessary requirements to satisfy the module limiting conditions: shield and power supply regulation.**

The module is limited to OEM installation ONLY. The OEM integrator is responsible for ensuring the end user has no manual instructions to remove or install module.

## Regulatory Module Integration Instructions

This module has been granted modular approval for mobile applications. OEM integrators for host products may use the module in their final products without additional FCC / IC (Industry Canada) certification if they meet the following conditions. Otherwise, additional FCC / IC approvals must be obtained.

- The host product with the module installed must be evaluated for simultaneous transmission
- The users manual for the host product must clearly indicate the operating requirements and conditions that must be observed to ensure compliance with current FCC / IC RF exposure

- To comply with FCC / IC regulations limiting both maximum RF output power and human exposure to RF radiation, the maximum antenna gain including cable loss in a mobile- only exposure condition must not exceed

Antenna Type	Model No.	Manufacturer	Frequency Band (M Hz)	Max Antenna Gain ( dBi)
Dipole Antenna	A-2409	AsiaRF Ltd.	2412 ~ 2462	5.0
Chip Antenna	ACA-5036-A2-CC-S	INPAQ	2412 ~ 2462	3.0

- A label must be affixed to the outside of the host product with the following statements: This device contains FCC ID: *TKZAWM688*

The final host / module combination may also need to be evaluated against the FCC Part 15B criteria for unintentional radiators in order to be properly authorized for operation as a Part 15 digital device.

If the final host / module combination is intended for use as a portable device (see classifications below) the host manufacturer is responsible for separate approvals for the SAR requirements from FCC Part 2.1093

## Device Classifications

Since host devices vary widely with design features and configurations module integrators shall follow the guidelines below regarding device classification and simultaneous transmission, and seek guidance from their preferred regulatory test lab to determine how regulatory guidelines will impact the device compliance. Proactive management of the regulatory process will minimize unexpected schedule delays and costs due to unplanned testing activities.

The module integrator must determine the minimum distance required between their host device and the user's body. The FCC provides device classification definitions to assist in making the correct determination. Note that these classifications are guidelines only; strict adherence to a device classification may not satisfy the regulatory requirement as near-body device design details may vary widely. Your preferred test lab will be able to assist in determining the appropriate device category for your host product and if a KDB or PBA must be submitted to the FCC.

Note, the module you are using has been granted modular approval for mobile applications. Portable applications may require further RF exposure (SAR) evaluations. It is also likely that the host / module combination will need to undergo testing for FCC Part 15 regardless of the device classification. Your preferred test lab will be able to assist in determining the exact tests which are required on the host / module combination.

## FCC Definitions

**Portable:** (§2.1093) — A portable device is defined as a transmitting device designed to be used so that the

radiating structure(s) of the device is / are within 20 centimeters of the body of the user.

**Mobile:** (§2.1091) (b) — A mobile device is defined as a transmitting device designed to be used in other than fixed locations and to generally be used in such a way that a separation distance of at least 20 centimeters is normally maintained between the transmitter's radiating structure(s) and the body of the user or nearby persons. Per §2.1091d(d)(4) In some cases (for example, modular or desktop transmitters), the potential conditions of use of a device may not allow easy classification of that device as either Mobile or Portable. In these cases, applicants are responsible for determining minimum distances for compliance for the intended use and installation of the device based on evaluation of either specific absorption rate (SAR), field strength, or power density, whichever is most appropriate.

## Simultaneous Transmission Evaluation

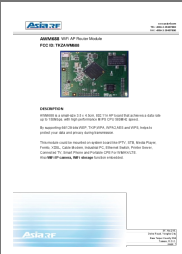
This module has **not** been evaluated or approved for simultaneous transmission as it is impossible to determine the exact multi-transmission scenario that a host manufacturer may choose. Any simultaneous transmission condition established through module integration into a host product **must** be evaluated per the requirements in KDB447498D01 and KDB616217D04 (for laptop, notebook, netbook, and tablet applications).

These requirements include, but are not limited to:

- Transmitters and modules certified for mobile or portable exposure conditions can be incorporated in mobile host devices without further testing or certification when:
- The closest separation among all simultaneous transmitting antennas is  $\geq 20$  cm,  
Or
- Antenna separation distance and MPE compliance requirements for **ALL** simultaneous transmitting antennas have been specified in the application filing of at least one of the certified transmitters within the host In addition, when transmitters certified for portable use are incorporated in a mobile host device, the antenna(s) must be  $\geq 5$  cm from all other simultaneous transmitting antennas.
- All antennas in the final product must be at least 20 cm from users and nearby

***Read More About This Manual & Download PDF:***

## Documents / Resources

	<p><a href="#">AsiaRF AWM688 WiFi AP Router Module</a> [pdf] User Manual AWM688, TKZAWM688, AWM688 WiFi AP Router Module, WiFi AP Router Module, AP Router Module, Router Module</p>
---	--