



ASHLEY D29113 Parellen Counter Height Dining Table Instruction Manual

[Home](#) » [Ashley](#) » ASHLEY D29113 Parellen Counter Height Dining Table Instruction Manual 

ASHLEY D29113 Parellen Counter Height Dining Table Instruction Manual



Contents

- [1 Safety Instruction](#)
- [2 Parts List](#)
- [3 Assembly Instruction](#)
- [4 CUSTOMER SUPPORT](#)
- [5 Documents / Resources](#)
- [6 Related Posts](#)

Safety Instruction

- Always use proper tools.
- Follow the assembly steps in order. Do not skip any steps.
- Be sure to check all packing materials carefully for small parts may have come loose inside the carton during shipment.

If parts are missing, contact the retailer from which you purchased the product to obtain any missing parts. DO NOT USE SUBSTITUTE PARTS.

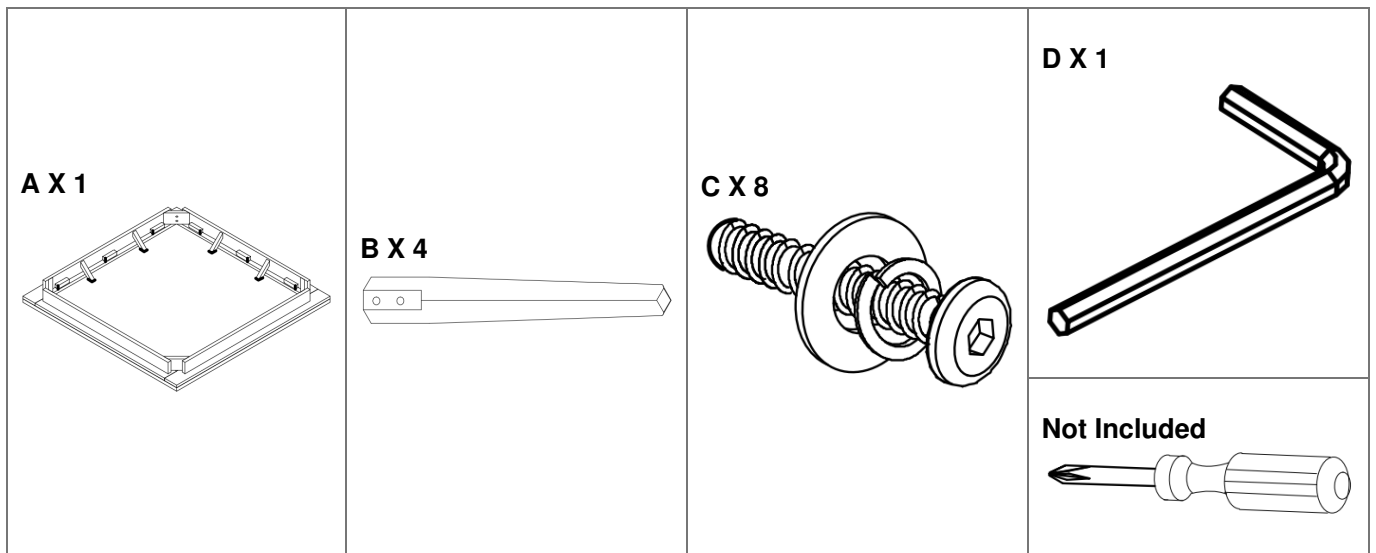
- Periodically check to ensure that all connectors (bolts, screws, etc.) are tight.
- Keep the instructions for future reference. * Some assembly may involve attaching glass or mirrors. Be very careful handling the glass or mirrors, as severe injury may result if the glass or mirror breaks. Never handle large pieces of glass or mirrors by yourself.
- When assembling products that have electric cords (lamps, light, sure the electrical cord is unplugged before assembly and (2) be electrical cord during assembly.
- When assembling shelves or entertainment centers, do not stand order to assemble upper shelves—use a step ladder.
- Do not stand on tables, including but not limited to, end tables, dinner tables, as tables are not to support the weight of a person.
- Where assembly instructions state that the assembly requires two or more attempt by yourself as there is a risk of injury.
etc.), always (1) make careful not to twist the on lower shelves in coffee tables, and people, do not




NOTE: ASHLEY FURNITURE INDUSTRIES, LLC DISCLAIMS ANY LIABILITY FOR DAMAGES OR INJURIES WHICH MAY OCCUR DUE TO FAILURE TO PROPERLY FOLLOW ASSEMBLY INSTRUCTIONS, PROPERLY ASSEMBLE THE PRODUCT, OR PROPERLY USE THE PRODUCT.

NOTE: YOUR UNIT MAY LOOK DIFFERENT IN APPEARANCE FROM THE ONE SHOWN IN THE ILLUSTRATIONS ON THIS INSTRUCTION SHEET.

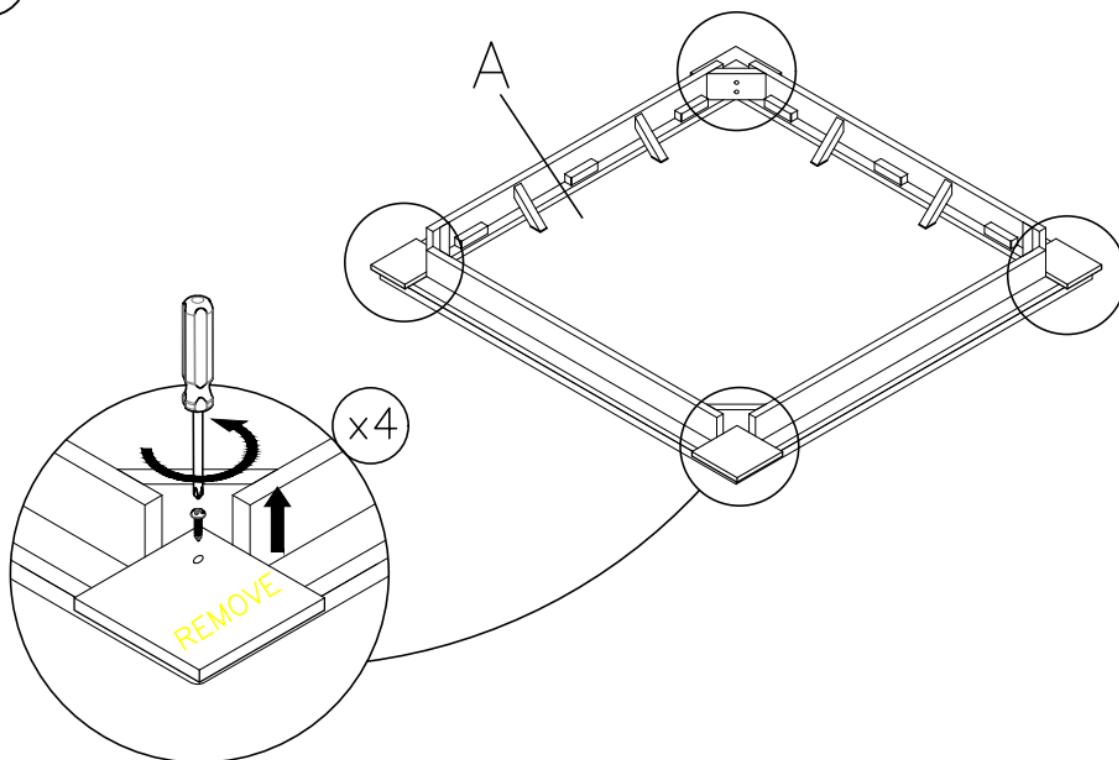
Parts List

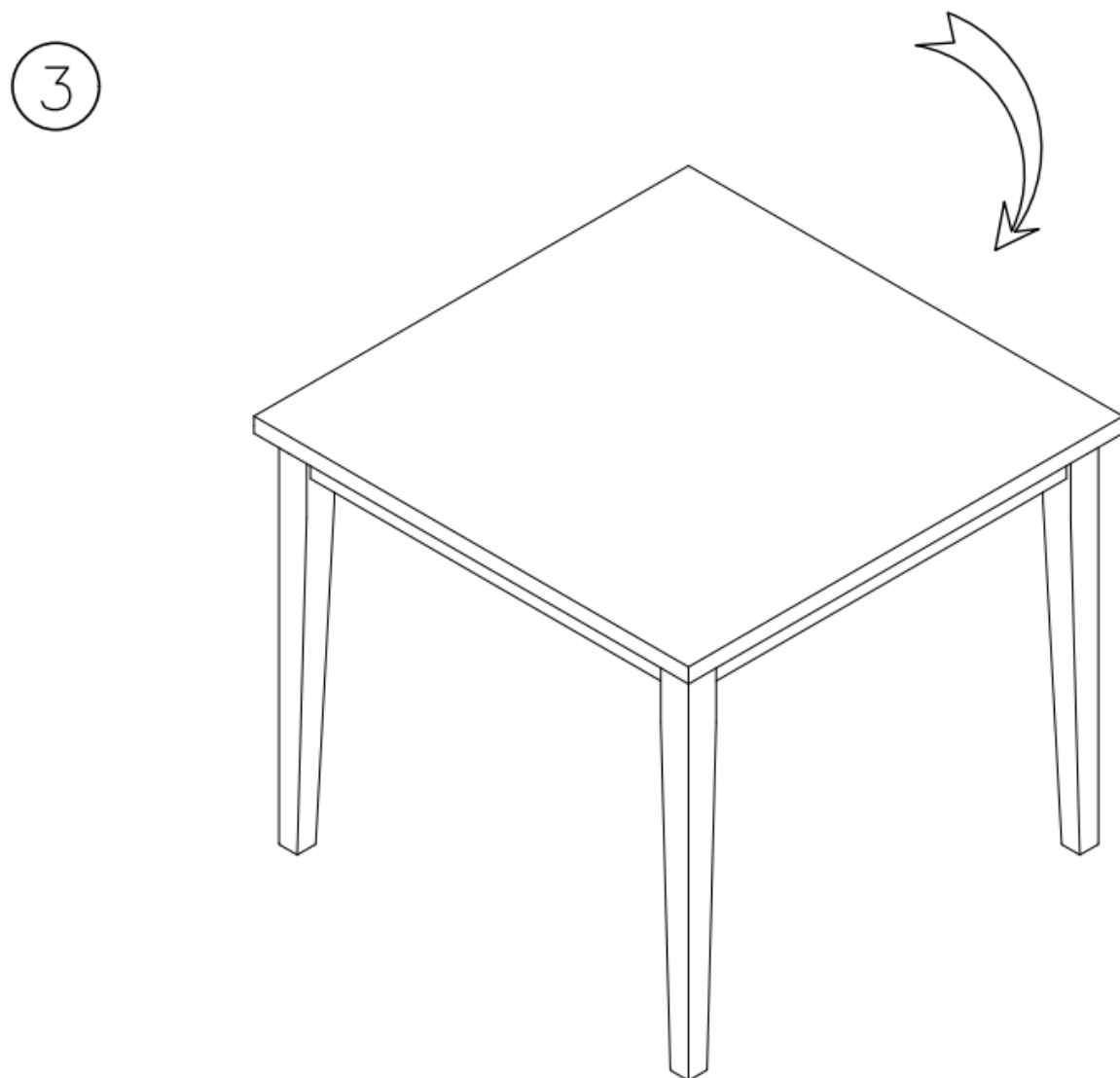
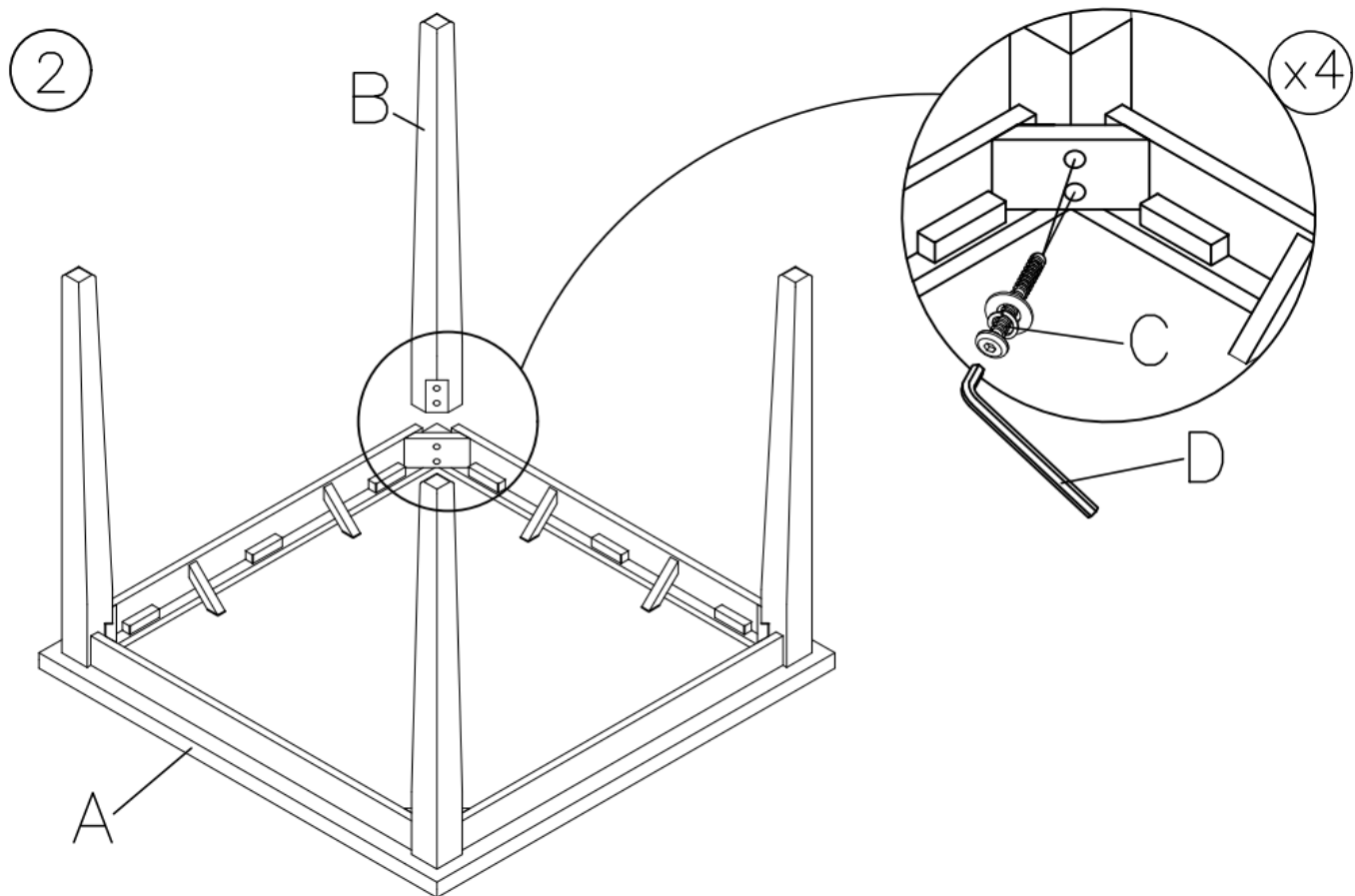


 **NOTE:** UNIT SHOULD BE ASSEMBLED BY TWO OR MORE PEOPLE. DO NOT TIGHTEN ANY BOLTS UNTIL ALL BOLTS HAVE BEEN STARTED!

Assembly Instruction

1





CUSTOMER SUPPORT

1-844-966-0809

RTAParts@ashleyfurniture.com

www.ashleyfurniture.parts



Documents / Resources

	<p>ASHLEY D29113 Parellen Counter Height Dining Table [pdf] Instruction Manual D29113 Parellen Counter Height Dining Table, D29113, Parellen Counter Height Dining Table, Counter Height Dining Table, Height Dining Table, Dining Table, Table</p>
--	---

[Manuals+](#).