



ASD LED Round Downlight with Junction Box Installation Guide

[Home](#) » [ASD](#) » ASD LED Round Downlight with Junction Box Installation Guide 



LED ROUND DOWNLIGHT with Junction box

DESIGN & OPTIONS – LED ROUND DOWNLIGHT WITH JUNCTION BOX has a classic, low-profile design with a baffle trim that allows you to have a stylish look with efficient lighting. Smooth dimming capabilities ranging from 100% to 1096 with modern LED dimmers allow you to control the look and feel of your You can choose either 3000K, 4000K, or 5000K color temperature. The 120° beam angle grants you smooth and even lighting.

INSTALLATION – This fixture has an integrated J-box, making installation quick and easy. It has everything you need in one set. Just cut out the template, connect the J-box wiring on the back of the recessed downlight to your light switch, and place it into your ceiling. Spring-loaded clips ensure a snug fit to the surface. This fixture is IC rated so there is no can or any other housing required. Refer to installation instructions for detailed steps.

APPLICATION – Install the fixture to the ceiling for bright light in your family room, bedroom, hallways, corridors, or any other common areas in your living space. It is also suitable for wet locations, making it perfect for kitchen and bathroom lighting as well. You could also use it as a complimentary light to an existing ceiling light.

ENERGY SAVINGS & EFFICIENCY – Replacing an incandescent bulb with the LED ROUND DOWNLIGHT WITH JUNCTION BOX can save you up to 8 times as much on your current energy costs. With a lifespan of 50,000 hours, these fixtures are made to last decades under normal operation! This fixture will save you a significant amount of money in its lifetime.

CERTIFICATION & WARRANTY-Buy with confidence: ASD provides a 5-year warranty along with ETL and ENERGY STAR certifications to guarantee top-quality products and safety! Top US certifications allow participation in rebates; please check the rebate programs available in your state.

Catalog number	
Notes	
Type	



Contents

- 1 **PRODUCT LEGEND:**
- 2 **LED ROUND DOWNLIGHT WITH JUNCTION BOX:**
- 3 **ORDERING INFORMATION:**
- 4 **PRODUCT SPECIFICATIONS:**
- 5 **IMPORTANT SAFETY INFORMATION:**
- 6 **ELECTRICAL SCHEMATIC DIAGRAM:**
- 7 **PACKAGE CONTENTS:**
- 8 **TEMPLATE:**
- 9 **INSTALLATION STEPS:**
- 10 **Documents / Resources**
- 11 **Related Posts**

PRODUCT LEGEND:

Family	Size	Dimmable	Watts	CTT	Finish
ASD-LDLOBR	X	X	XX	XX	XX
LED Round Downlight with Junction box	4 = 4 inch	D = Dimmable	10 = 10 W	30 = 3,000 K	WH = White
	6 = 6 inch		15 = 15 W	40 = 4,000 K	
				50 = 5,000 K	

LED ROUND DOWNLIGHT WITH JUNCTION BOX:

Model	Size	Watts	Voltage	Dimmable	CTT	Lumens	Dimensions (L x W x H)
ASD-LOLOBR-4D1030-WH	4 inch	10 W	120 V	TRIAC	3,000 K	635lm	5" x 5" x 3 7/8"
ASD-LDLOBR-401040-WH	4 inch	10w	120 V	TRIAC	4,000 K	635 lm	5" x 5" x 3 7/8"
ASD-LDLOBR-401050-WH	4 inch	10 W	120 V	TRIAC	5,000 K	635 lm	5" x 5" x 3 7/8"
ASD-LDLOBR-6D1530-WH	6 inch	15 W	120 V	TRIAC	3,000 K	1,000 lm	7 3/8" x 7 3/8" x 3 3/4"
ASD-LDLOBR-6D1540-WH	6 inch	15 W	120 V	TRIAC	4,000 K	1,000 lm	7 3/8" x 7 3/8" x 3 3/4"
ASD-LDLOBR-601550-WH	6 inch	15 W	120 V	TRIAC	5,000	1,000 lm	7 3/8" x 7 3/8" x 3 3/4"

ORDERING INFORMATION:

Model	UPC	Pcs in middle box	Middlebox Size	Middlebox Weight	GTIN 14 for Middlebox	Pcs. per Carton	Carton Size	Carton Weight	GTIN 14 for Carton
ASD-LDLCT 3R-401030-WH	81005073 1256	6	12.8' × 10.6' × 5.5'		1081005073 1253		21.9" × 13.4" × 6.3"	11lb	20810050731250
ASD-LDLOBR-4D1040-WH	81005073 1263	6	12.8" × 10.6' × 5.5'		1081005073 1260		21.9" × 13.4" × 6.3"	11lb	20810050731267
ASD-LDLOBR-401050-WH	81005073 1270	6	17.8" × 10.6' × 5.5'		1081005073 1277		21.9" × 13.4" × 6.3"	11lb	7081005073127.
ASD-LDLOBR-6D1530-WH	81005073 1287		—		—		15.6" × 12.6" × 15.7"	14.3 lb	30810050731288
ASD-LDLOBR-6D1540-V/H	81005073 12%		—		—		15.6' × 12.6 × 15.7'	14.3 lb	30810050731295
— ASD-LOLOBR-601550-WH	81005073 1300		—		—		15.6' × 12.6 ¹ × 15.7'	14.3 lb	30810050731301

PRODUCT SPECIFICATIONS:

Construction & Materials			Electrical System		
Housing	Aluminum, PC		Input Voltage	120 V	
Lens	Acrylic		Max input current	ASD-LDLOBR-401030-WH	0.1 A
Finish Color	White			ASD-LDLOBR-401040-WH	
	ASD-LDLOBR-401030-WH	0.6 lb (0.3 kg)		AS0-LIDLOBR-4131050-WH	
	ASD-LDLOBR-401040-WH			AS0-LDLOBR-601530-WH	

Weight	ASD -LDL OBR -401 050- WH	0.9 lb (0.4 kg)		ASD-LDLOBR-60154 0-WH	0.15 A
	ASD -LDL OBR -613 1530 -WH			ASD-LDLOBR-61315 50-W1-1	
	ASD -LDL OBR -601 540- WH		Inrush current (Action time)	0.2 A (0.03 5)	
	ASO -LOL OBR -601 550- WH		AC input range	min 108 V max 132V	
Environmental System			Off State Power	0 W	
Work Environment	Suitable for Wet Loca tions				10 W
Operating Tempera ture	-13°F to 113°F (- 25°C to 45°C)			ASO-LDLOBR-40104 0-WH	
L-70 Life	> 50,000 hrs			ASD-LDLOBR-40105 0-WH	
Optical System				ASO-LIDLOBR-61315 30-WH	
	ASD -LDL OBR -401 030- WH	635 Em	ASD-LDLOBR-60154 0-WH	15 W	
	ASD -LDL OBR -401 040- WH		ASD-LDLOBR-60155 0-WH		

Luminous Flux	ASD -LDL OBR -401 050- WH				Power Factor	> 0.9	
	ASD -LDL OBR -601 530- WH		1,0001m		Output voltage	132 V	
	ASO -LDL OBR -601 540- WH					ASD-LDLOBR-4D103 0-WH	60 mA
	ASD -LDL OBR -613 1550 -WH					ASD-LDLOBR-40104 0-WH	
Color Temperature	3,000 K; 4.000 K; 5.000 K					ASO-LIDLOBR-40105 0-WH	
CRI	> 90				Max output current	ASD-LDLOBR-60153 0-WH	90 mA
Control						ASD-LOLOBR-60154 0-WH	
Dimming Range 10-100%						ASD-LDLOBR-60155 0-WH	
Dimming compatible controls					LED Driver Class	DOB	
Brand	Lutron		Leviton		Regular and Voluntary Certifications		
	D V C L- 1 5 3 P- W H	SLV -60 0P- WH	6672	6674	5 – year limited warranty	cETLus certified 4008281	Energy Star listed

Models	M A C L- 1 5 3 M - W H	CT- 603 PG	OB3 3K1	6631
	S -6 0 0 P	S-6 03P	1E12 05	
	O V L V- 6 0 3 P- IV	DV- 600 P	1F42 05	
	C T C L- 1 5 3 P D H	DV W-6 03P GH- WH	6633 -P	

INSTALLATION GUIDE

IMPORTANT SAFETY INFORMATION:

Please read all the instructions below before installation.

- Make sure that the supply voltage corresponds to the rated product voltage.
- The product must be installed by a qualified electrician in accordance with the National Electrical Code and corresponding local codes.
- If the product is damaged, do not use it.



WARNING

RISK OF PERSONAL INJURY — READ and follow all WARNINGS and installation instructions.

Keep or give to the owner for future reference.

Risk of cuts: Wear gloves to prevent cuts or abrasions when removing from the carton, handling, installing, and maintaining this product.

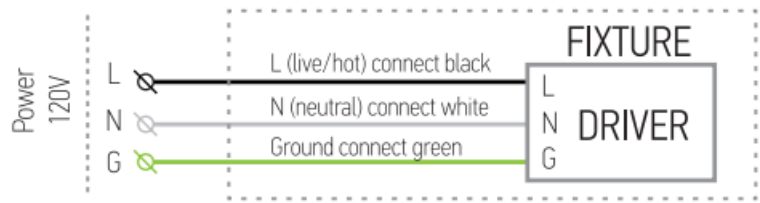
Risk of electric shock: This product must be installed in accordance with the applicable installation code by a person familiar with the construction and operation of the product and the hazards involved.

Risk of Fire: Minimum 194°F supply conductors. Consult a qualified electrician to ensure the correct branch circuit conductor.

ASD® assumes no responsibility for claims arising out of improper or careless Installation or handling of this product.

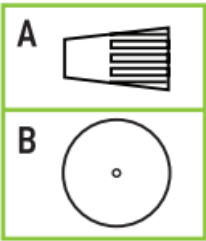
For recessed installation: Access above ceiling required. Inherently protected. The vapor barrier must be suitable for 194°F

ELECTRICAL SCHEMATIC DIAGRAM:



PACKAGE CONTENTS:

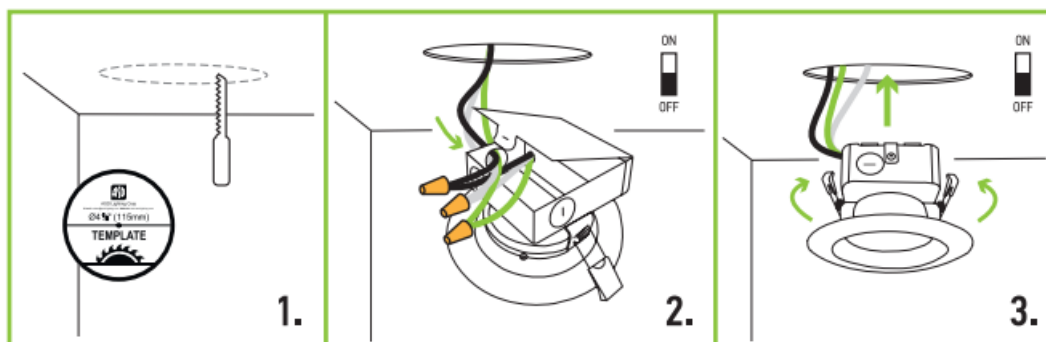
Description	Q-ty
LED Round Downlight with Junction box	1
Wire Nut (A)	3
Template (B)	1
Box	1
Cut sheet	2



TEMPLATE:

Model	Fixture size	Rec. holes
6 inch	5"	4 1/2" x 4 1/2"
6 inch	7 3/8"	6 11/16" x 6 11/16"

INSTALLATION STEPS:



1. Use the template to cut an appropriately sized hole.
2. Open the junction box. Connect the wires: Black to Black, White to White, Green to Green. Secure the connection with wire nuts. Tuck all the wires back into the junction box and close it.
3. Push the spring-loaded clips upwards and insert the fixture base into the mounting hole. Release the clips and the fixture will be "pulled" into place against the ceiling. Once assembly is complete, turn the power on to ensure the fixture is operating properly.

For most up-to-date spec sheets please refer to asd-lighting.com

ASD LIGHTING CORP

E-mail: orders@asd-lichtinci.com | Web site: www.asd-lichtiracom



Documents / Resources

	<p>ASD LED Round Downlight with Junction Box [pdf] Installation Guide LED Round Downlight with Junction Box</p>
--	---

