



arVin Xbox Wireless Controller User Manual

[Home](#) » [arVin](#) » arVin Xbox Wireless Controller User Manual 

arVin Xbox Wireless Controller User Manual

Wireless Game Controller

User Manual



Model No.: Xbox Wireless Controller

Support iOS/Android/Nintendo Switch Platform

Notice:

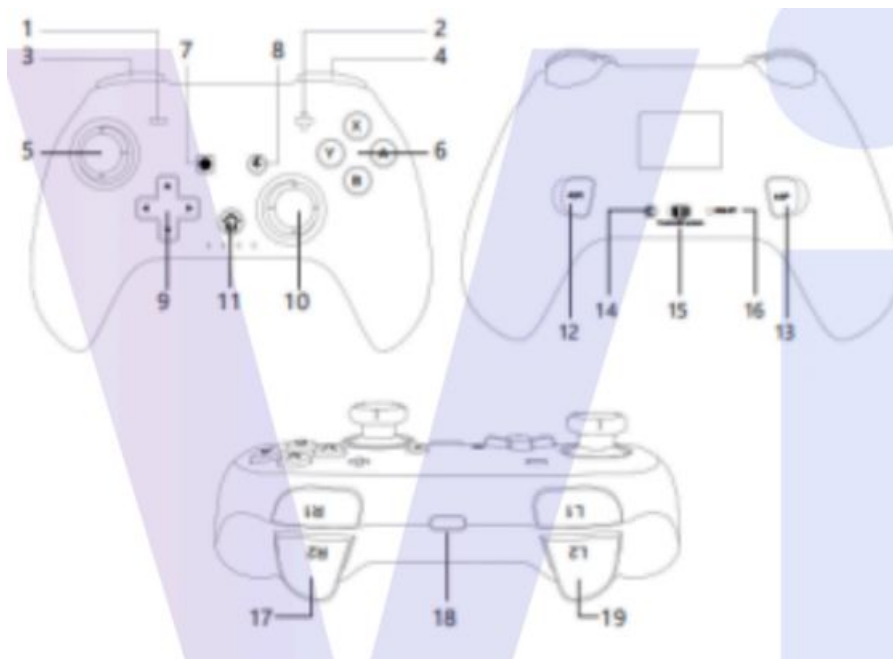
1. Platform operation system required: iOS 13.0+/ Android 10.0+.
2. Support iPhone/iPad Android Phone/Tablet, Switch.
Not support Apple TV & Macbook & iPod Fire TV/ TV Box.
3. Direct Connect & play for most games. no simulator and App needed.
4. Support most controller designed games & download from:
iOS: App Store
Android: Google Play
Switch: Official Games

Contents

- [1 Keys Instruction](#)
- [2 iOS system wireless connection guideline](#)
- [3 Android system connection guideline](#)
- [4 Nintendo switch connection guideline](#)
- [5 Documents / Resources](#)
- [6 Related Posts](#)

Keys Instruction

Part name



- 1. —
- 2. +
- 3. L1
- 4. R1
- 5. Left stick
- 6. Function keys
- 7. Screenshot key
- 8. TURBO
- 9. Cross key
- 10. Right stick
- 11. HOME
- 12. AGR
- 13. AGL
- 14. One-dick coemption
- 15. Normal/Custom
- 16. RESET
- 17. R2

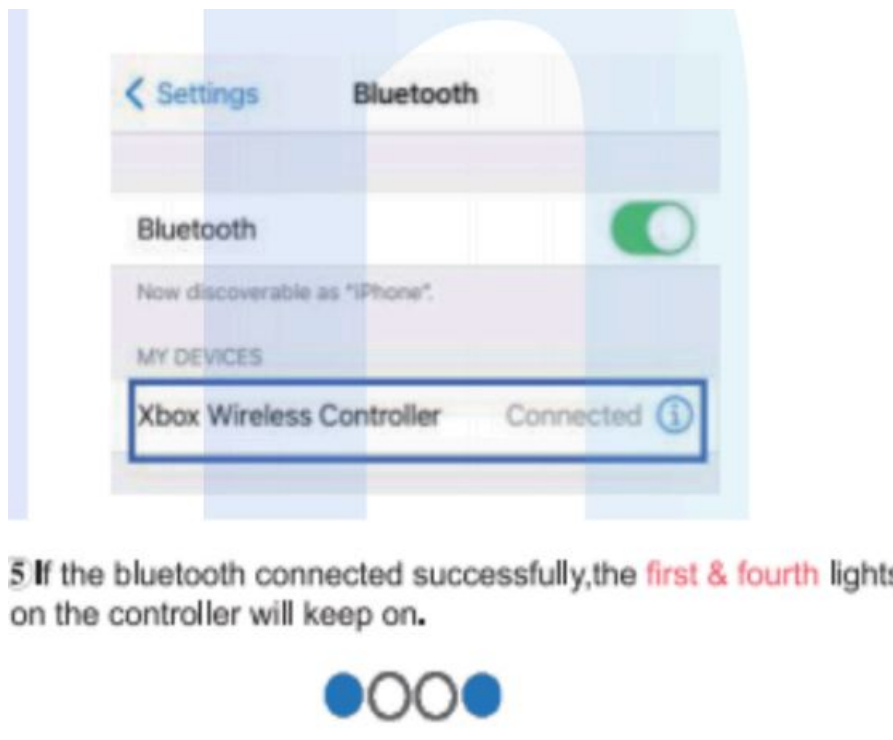
18. USB interface

19. L2

iOS system wireless connection guideline

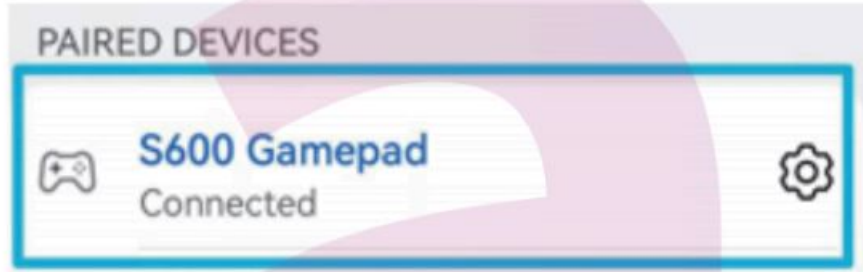
Bluetooth Connection

1. Required system: ,os 13.0+ version.
2. Press X+HOME key for 2 sec until the “first & fourth lights on the controller flash slowly.
3. Nov, the gamepad Is n Bluetooth pair mode.
4. Turn on Bluetooth on iOS device. Tap to pair and connect appears on the list.



Android system connection guideline

- ① Required system: Android 10.0+ version.
- ② Press 'Y+HOME' key for 2 sec until the **second & third** lights on the controller flash slowly. ○●●○
- ③ Now the gamepad is in Bluetooth pair mode.
- ④ Turn on Bluetooth on Android device. Tap '**S600 Gamepad**' to pair and connect when it appears on the available list.



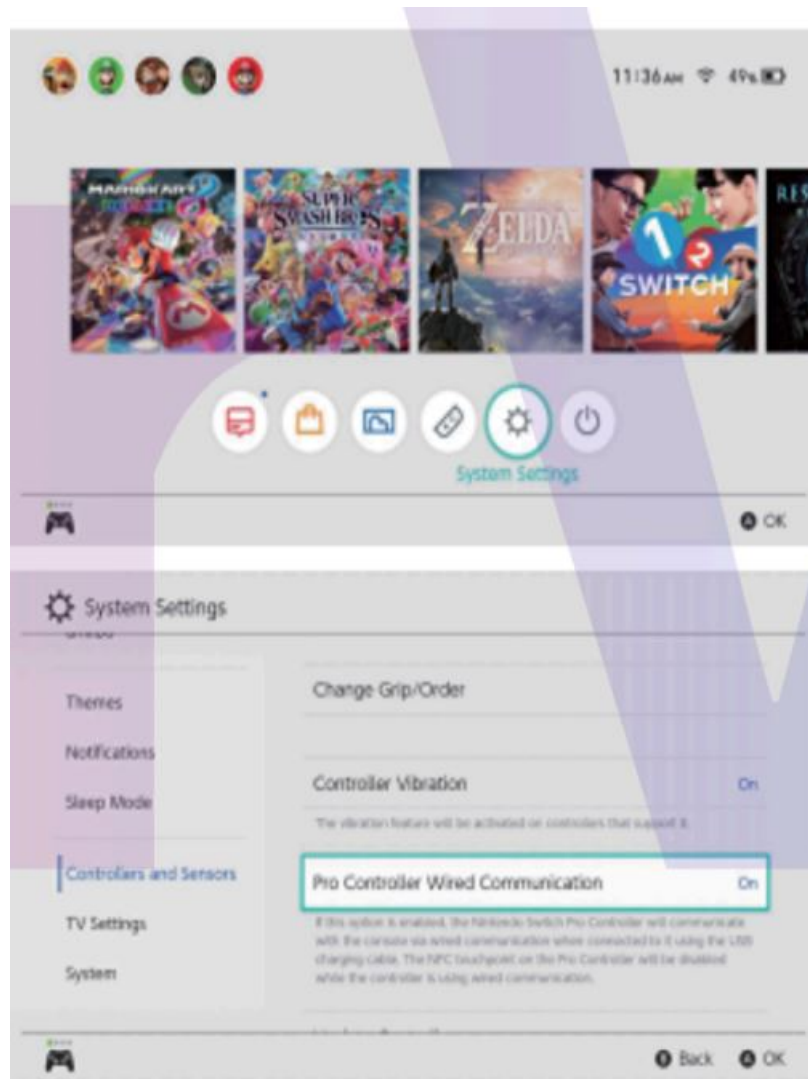
- ⑤ If the bluetooth connected successfully, the **second & third** lights will keep on. ○●●○
- ⑥ Bluetooth connection is done, just choose the supported game that you want to play and enjoy it.
- ⑦ Supported game & special function:
Most controller supported game download from Google Play.

Other Functions:
 - Support Programming: Yes
 - Support Turbo Function: Yes
 - Support Vibration: No

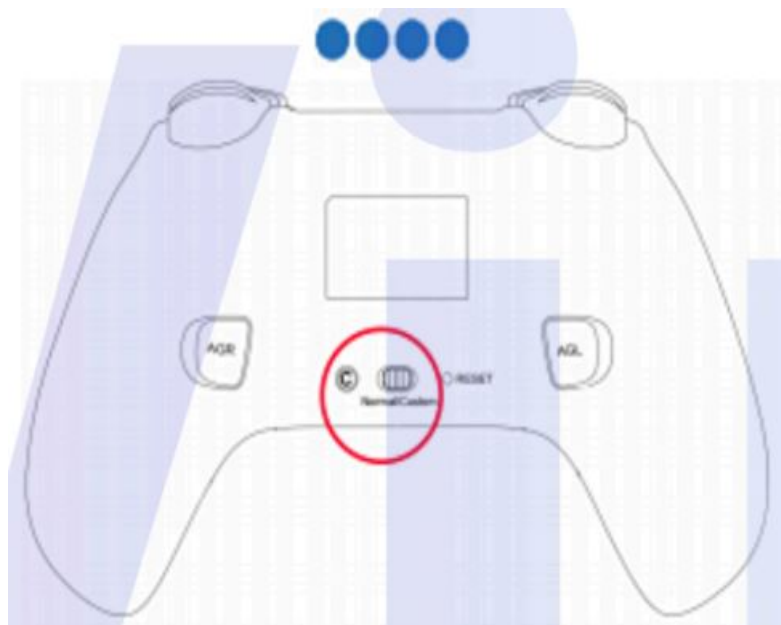
Nintendo switch connection guideline

Console Connection

1. Turn On Switch Tap Setting – controllers and Sensors Pro Controller Wired Communicating turn on.



2. On the back of controller, press controller to normal mode, then press C key for 2 sec until all led lights flash quickly.



3. Back to Switch homepage. tap 'Controllers – Change Grip/ Order (the controller ,vi ll auto pair).
4. When the pairing is successful. the controller will vibrate, and the LED light on the controller will indicate ,Which player role you have joined in. For example, means player 1.
5. Connection is done, Just enjoy your game.

Other Functions:


- Support Programming: Yes

- Support Turbo Function: Yes
- Support Vibration: Yes
- Support Wake Up: Yes
- Built-In 6-axls gyro: Yes

6. Notice:

When the controller needs to be reconnected after shutting down. turn on the or the Switch first. and then the key of the controller for 2 seconds to turn on the controller, and the controller will automatically reconnect to Switch.

Documents / Resources

	<p>arVin Xbox Wireless Controller [pdf] User Manual B09NFJWG46, B09FDGNP89, B09MN5R737, B09FD6SK6X, B09FD8RS71, Xbox Wireless Controller, Xbox Controller, Wireless Controller, Controller</p>
---	--