



## arVin D6 Wireless Game Controller User Manual

[Home](#) » [arVin](#) » arVin D6 Wireless Game Controller User Manual 

# ARVIN®

Wireless Game Controller  
User Manual



Model Number: D6  
Compatible with iOS/Android/PC/Switch/PS4/PS5  
and cloud gaming app

## Contents

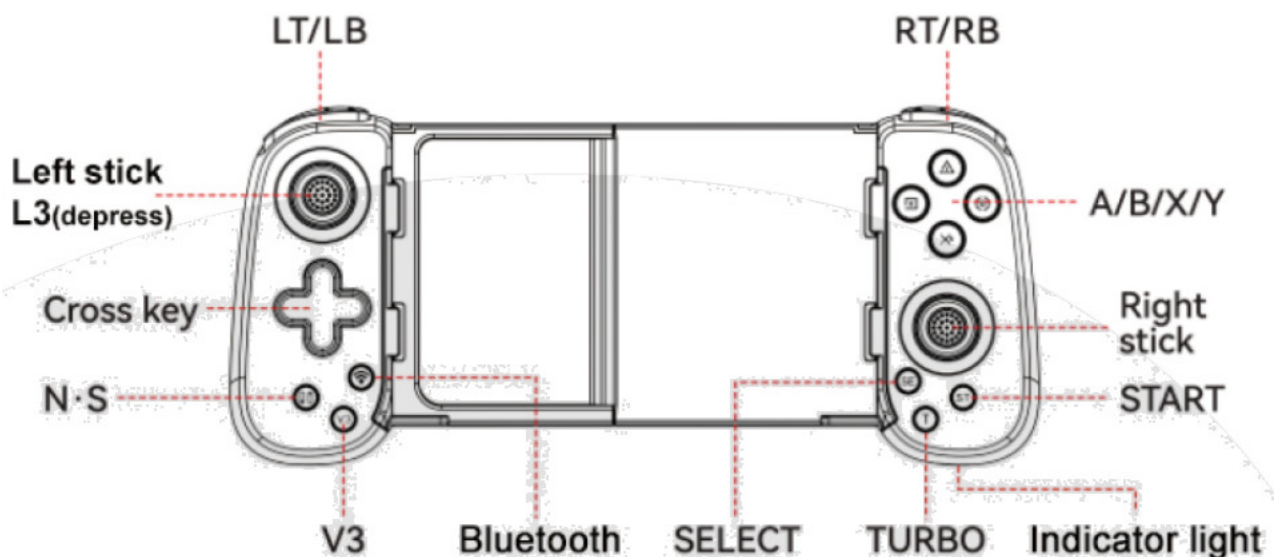
- 1 D6 Wireless Game Controller
- 2 Tips Before Playing Mobile Games
- 3 iOS Wireless Connection Guideline
- 4 PC Wireless Connection Guideline
- 5 Remote Control Mode – PS Remote Play(1)
- 6 Remote Control Mode – Xbox Remote Play
- 7 Remote Control Mode – Steam Link
- 8 About Turbo Function
- 9 Q & A (1)
- 10 Documents / Resources
  - 10.1 References

## D6 Wireless Game Controller

### Notices:

1. System required: iOS 13.0+/Android 6.0+/Windows 7.0+
2. Support iPhone/iPad/Macbook, Android phone/tablet, Nintendo Switch/Switch OLED/Switch Lite, PS3/PS4/PS5.
3. Supports Xbox/Play Station/PC Steam by connecting with App via mobile phone.  
App for Xbox: Xbox Remote Play  
App for Play Station: PS Remote Play  
App for PC Steam: Steam Link  
(\*The LAN to which your phone and the game console are connected must be the same.)
4. Supports most Cloud Gaming Apps:  
Nvidia GeForce Now, Xbox Cloud Gaming, Amazon Luna, Google Stadia, Rainway, Moonlight, etc.

### Keys Instruction:



## Tips Before Playing Mobile Games

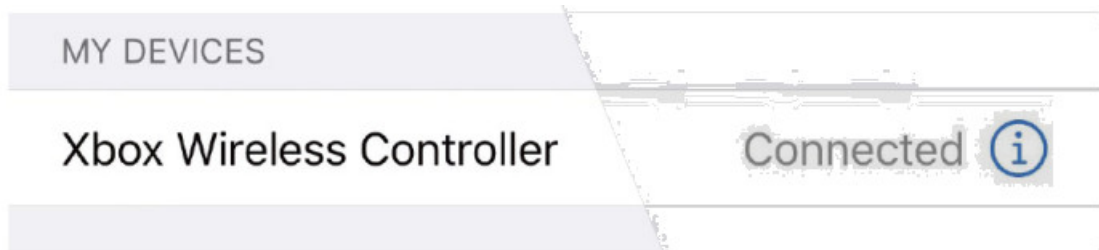
1. Some controller supported games need to select 'controller mode' in the game settings before you using the controller to play. For example: Genshin Impact (iOS), COD.
2. If you want to test if the controller can work normally or not, you can download 'Combat Modern 5' or 'Asphalt 9 Legends' to test, they fully support direct play.
3. In Call of duty gaming interface, if you've received a notice to choose a controller model within 'PS4, PS5 and XBOX', please select 'XBOX'.
4. Under iOS mode, it supports 'Genshin Impact', and do not support 'PUBG Mobile'.

Under Android mode, both 'Genshin Impact' and 'PUBG Mobile' are not supported.

## iOS Wireless Connection Guideline

### Bluetooth Connection

1. Required system: iOS 13.0+ version.
2. Press the 'Bluetooth' key for 5 seconds until the indicator light flash quickly.
3. Turn on Bluetooth function on your iOS device.
4. Search and select 'Xbox Wireless Controller'. Once the connection has done, the indicator light will keep on.

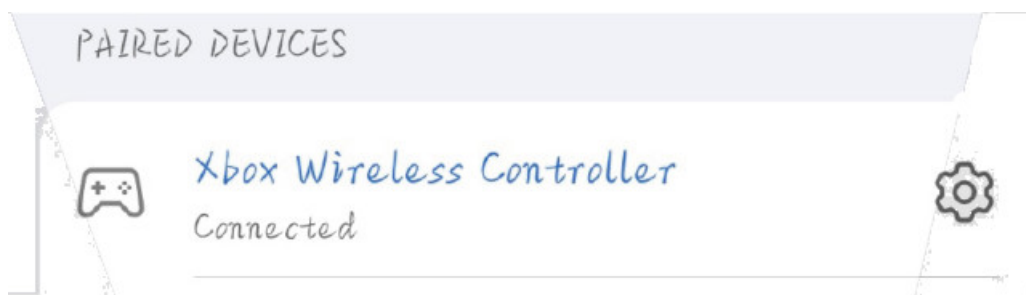


5. Bluetooth connection is done, just choose the supported game that you want to play and enjoy it.
6. Notice:
  - When the controller enters the bluetooth pairing mode with the indicator light flashes quickly, but can not connect to your phone successfully, please delete the device – 'Xbox Wireless Controller' on the phone and reconnect it.
  - Supports for Turbo function
  - No support for vibration
  - No support for 6-axis gyroscope

## Android Wireless Connection Guideline(1)

### Bluetooth Connection

1. Required system: Android 6.0+ version.
2. Press the 'Bluetooth' key for 5 seconds until the indicator light flash quickly.
3. Turn on Bluetooth function on your Android device.
4. Search and select 'Xbox Wireless Controller'. Once the connection has done, the indicator light will keep on.



5. Bluetooth connection is done, just choose the supported game that you want to play and enjoy it.

6. Notice:

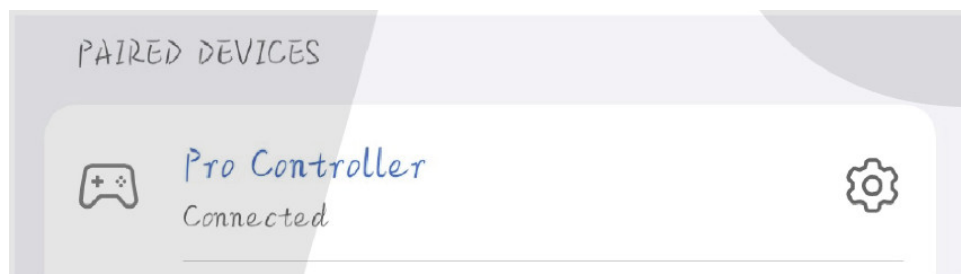
When the controller enters the bluetooth pairing mode with the indicator light flashes quickly, but can not connect to your phone successfully, please delete the device – 'Xbox Wireless Controller' on the phone and reconnect it.

- Supports for Turbo function
- No support for vibration
- No support for 6-axis gyroscope

### Android Wireless Connection Guideline(2)

If you find that some games are not playable or some key functions are missing after connecting via the above method, please try the following connection method.

1. Press the 'N-S' key for 5 seconds until the indicator light flash quickly.
2. Turn on Bluetooth function on your Android device.
3. Search and select 'Pro Controller'. Once the connection has done, the indicator light will keep on.



4. Bluetooth connection is done, just choose the supported game that you want to play and enjoy it.

5. Notice:

- When the controller enters the bluetooth pairing mode with the indicator light flashes quickly, but can not connect to your phone successfully, please delete the device – 'ProController' on the phone and reconnect it.

### PC Wireless Connection Guideline

Bluetooth Connection

1. Required system: Windows 7.0+ version.
2. Press the 'Bluetooth' key for 5 seconds until the indicator light flash quickly.
3. Turn on Bluetooth function on your PC. (If your computer does not have Bluetooth capability, you will need to buy a Bluetooth receiver.)
4. Search and select 'Xbox Wireless Controller'. Once the connection has done, the indicator light will keep on.
5. Bluetooth connection is done, just choose the supported game that you want to play and enjoy it.

## 6. Notice:

- Steam Setting:

Go to the Steam interface -> Settings -> Controller -> GENERAL CONTROLLER SETTINGS -> Turn on 'Xbox Configuration Support' before playing games with controller.

- Supports for Turbo function
- Supports for vibration
- Supports for 6-axis gyroscope

## **PS3/PS4/PS5 Connection Guideline**

### Console Connection

#### 1. Compatible devices: PS3/PS4/PS5

(Note: Using this controller with PS5 console can only play the PS4 games.)

2. When the controller is turned off, connect the controller to the PS3/PS4/PS5 console with a Type-C cable (included in the package).
3. Press 'Bluetooth' button, the controller will automatically connect to the console, and the indicator light will keep on.
4. Once the connection has done, you can unplug the Type-C cable to turn the controller into a wireless controller.
5. Notice:

- Once the controller is connected to the PS3, if it has not been connected to other devices(e.g. PS4), then the next time you want to connect PS3, you can press the 'Bluetooth' button to boot controller, and it will automatically reconnect to the PS3.

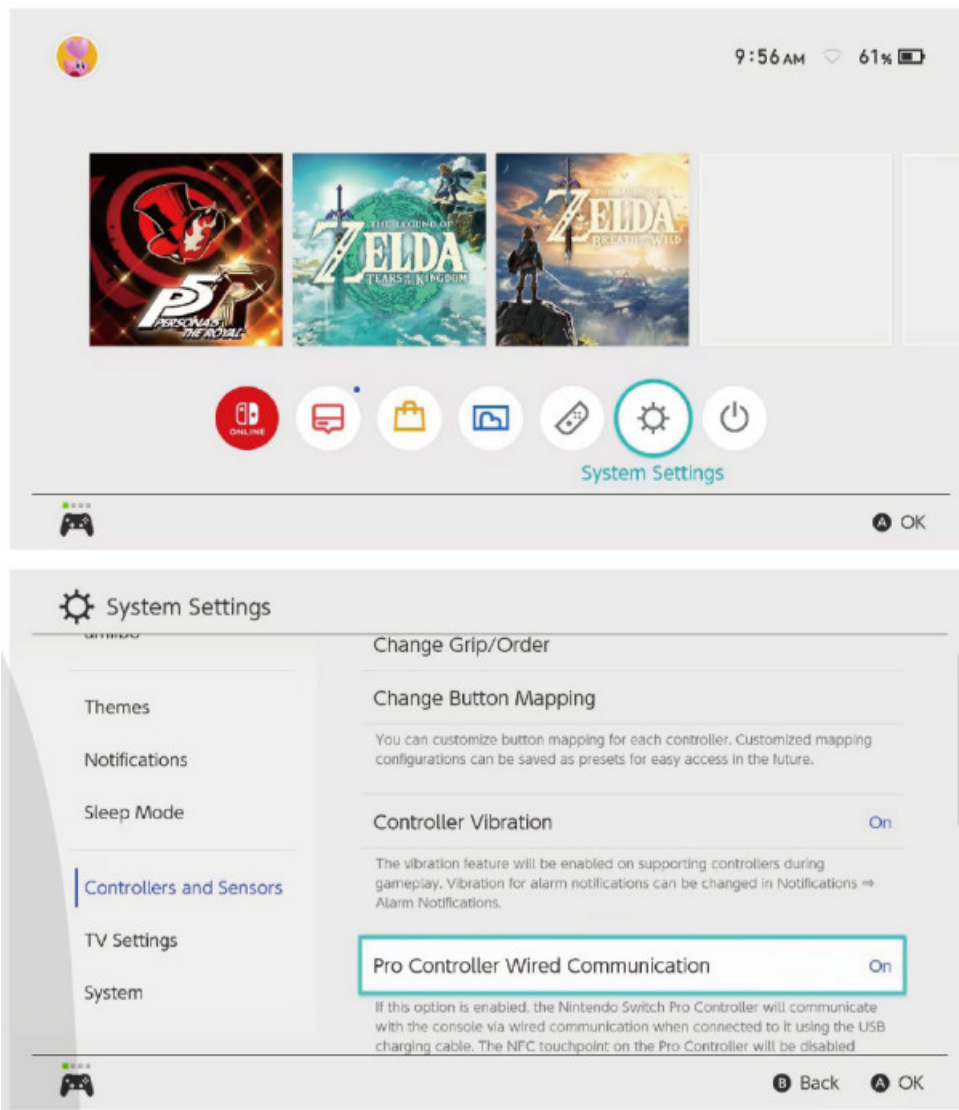
However, if you have connected to other devices before reconnecting PS3, you need to connect it according to the steps of the first connection.(This rule also applies to PS4/5)

- Supports for Turbo function
- Supports for vibration
- Supports for 6-axis gyroscope

## **Nintendo Switch Connection Guideline(1)**

### Console Connection

1. Compatible devices: Nintendo Switch/Nintendo Switch Lite/ Nintendo Switch OLED
2. Turn on Switch -> System Settings -> Controllers and Sensors -> Pro Controller Wired Communication(turn on)



3. Enter the 'Controllers -> Change Grip/Order' page. Then press the 'N-S' button for 5 seconds; the indicator light will flash quickly.
4. The controller will automatically connect to the console; the indicator light will keep on.
5. Notice:
  - Once the controller is connected to the Switch, if it has not been connected to other devices (e.g. PS4), then the next time you want to connect to Switch, you can press the 'N-S' button to boot the controller, and it will automatically reconnect to the Switch.

However, if you have connected to other devices before reconnecting to Switch, you need to connect it according to the steps of the first connection.

  - Supports Turbo function
  - Supports vibration
  - Supports 6-axis gyroscope

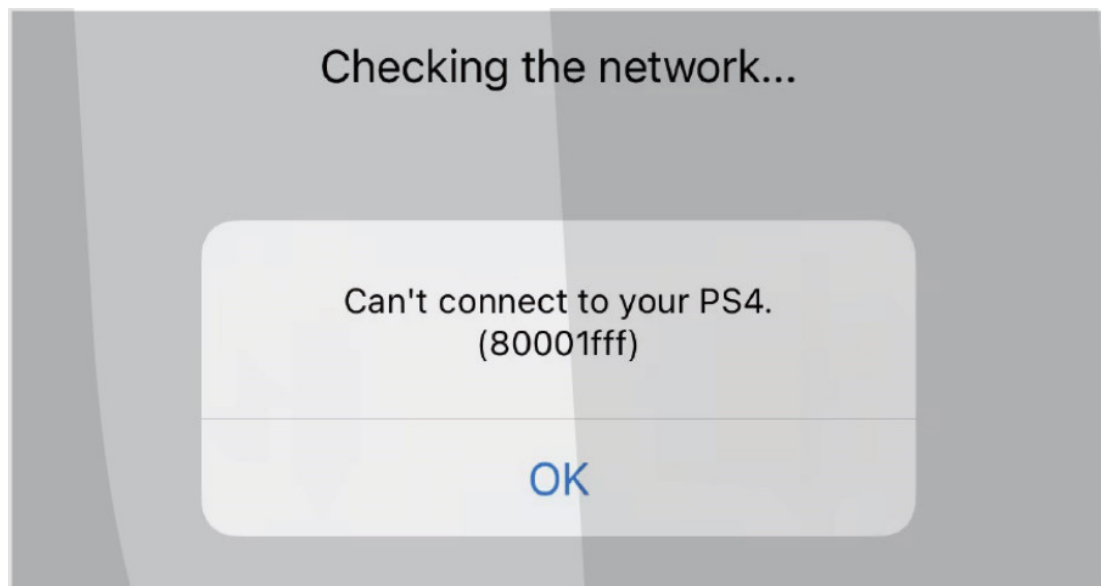
## Remote Control Mode – PS Remote Play(1)

1. Compatible devices: PS3/PS4/PS5
2. Download 'PS Remote Play' from APP Store/Google Play.
3. Bluetooth Connection:
  1. Press the 'Bluetooth' key for 5 seconds until the indicator light flashes quickly.

2. Turn on Bluetooth function on your iOS/Android device.
3. Search and select 'Xbox Wireless Controller'. Once the connection has done, the indicator light will keep on.
4. Network Connection:
  1. Connect PS3/4/5 console and iOS/Android device with same network.
5. App Setting:
  1. Open App, click 'Start'.
  2. Sign in Sony account that same as your PS4/5 console.
  3. Choose 'PS4' or 'PS5' depending on your PS console device.
  4. Waiting for connecting. Once connected, choosing the game that you want to play and enjoy it.

### **Remote Control Mode – PS Remote Play(2)**

1. If the App does not connect to your PS4/5, click 'Other Connections'.
2. Choose 'PS4' or 'PS5' depending on your PS console device.
3. Click 'Link Manually'. Then on your PS console, select 'Setting -> Remote Play Connection Settings -> Register Device', and then enter the number in the following field.



#### **Notice:**

- If this prompt appears several times in both of the above methods, please uninstall 'PS Remote Play' and reinstall it, then connect again.

### **Remote Control Mode – Xbox Remote Play**

1. Compatible devices: Xbox Series X/Xbox Series S/Xbox One/ Xbox One S/Xbox One X
2. Download 'Xbox Remote Play' from APP Store/Google Play.
3. Bluetooth Connection:
  1. Press the 'Bluetooth' key for 5 seconds until the indicator light flash quickly.
  2. Turn on Bluetooth function on your iOS/Android device.
  3. Search and select 'Xbox Wireless Controller'. Once the connection has done, the indicator light will keep on.
4. Network Connection:
  1. Connect your Xbox console and iOS/Android device with same network.

2. Turn on your Xbox console, go to the 'Settings' page and click on 'Devices and Connections – Remote Features – Enable Remote Features(Turn on)'.
5. App Setting:
  1. Open App, sign in Xbox account that same as your Xbox console.
  2. Click on 'My Library – CONSOLES – Add an existing console' on the main screen.
  3. After completing the account binding, select 'Remote play on this device'. After completing the connection you can enjoy your game.

## **Remote Control Mode – Steam Link**

1. Required system: Windows 7.0+ version.
2. Download 'Steam Link' from APP Store/Google Play.
3. Bluetooth Connection:
  1. Press the 'Bluetooth' key for 5 seconds until the indicator light flash quickly.
  2. Turn on Bluetooth function on your iOS/Android device.
  3. Search and select 'Xbox Wireless Controller'. Once the connection has done, the indicator light will keep on.
4. Network Connection:
  1. Connect your PC and iOS/Android device with same network.
  2. Turn on the Steam, Sign in to your Steam account.
5. App Setting:
  1. Open App, the App will automatically scan for connectable computers, after clicking on the searched computer, enter the PIN code from the App into PC Steam.
  2. Once the connection and speed test are complete, click 'Start Running' to successfully access Steam's library to play the games.

### **Notice:**

- If APP can't scan your computer device, please click 'Other Computer', then follow the prompts to enter PIN code in PC Steam to connect successfully.

## **About Turbo Function**

1. Compatible devices: iOS/Android/PC/Switch/PS3/PS4/PS5/ remote control mode
2. Press and hold 'T key, then press the key you want to set turbo function(e.g. A button).
3. Release 'T' key, then setting is done. Now press and hold the 'A' button to release the A button function automatically
4. Pressing 'A+T' button again automatically releases the function of the A button without having to press the A button.
5. Pressing 'A+T' button again will cancel the automatic release function.

### **Notice:**

- The Turbo function only support single(e.g. A/B/X/Y/LT/LB/ RT/RB), not support for combination key, such as 'A+B' or 'X+Y'.



## Q & A (1)

1.Q: Why I can't turn on the new gamepad?

A: Please recharge the gamepad before you use it at the first time or use it again after a long period.

2.Q: I can't reconnect my phone with gamepad again even the Bluetooth shows has connected.

A: 1. Remove or delete the Bluetooth connection on your phone and reconnect it again. 2. If Tips 1 can not solve the problem, please reset the con-troller. The reset hole is on the left side of the charging port. When controller is on, press reset button, the indicator light will off. After reset, you can reconnect the controller.

3.Q: How to reset default setting for the gamepad?

A: There is a 'Reset' hole on the left side of the charging port. When gamepad is turned on, press the reset button, the indicator light will turn off after resetting.

4.Q: How do I know the gamepad's power state?

A: When the power is low, the indicator light flashes quickly; When charging, the indicator light flashes slowly; When fully charged, the indicator light will be off.

5.Q: Why controller doesn't work after connection?

A: Please remove and delete Bluetooth connection then reconnect it again, or reset the controller.

6.Q: Left or right rocker stuck or drifting problems.

A: Physical solution: Press left or right rocker and turn the rocker 3-5 rounds to reset axis of rocker.

7.Q: Can't power on the controller after charging overnight.

A: 1 While charging, the charging LED light stays on, but still can not power on the controller. Then you need to press the reset key to reboot the controller. 2 While charging, there is on any LED light on the controller. That means the charging cable is broken. Please use a new charging cable. There will be a LED light stays on while the charging cable works.

8.Q: Why does the key not work as normal?




A: 1 Reset the controller. 2 After reset, if it still doesn't work, please download 'game controller' from App Store/Google Play. Open 'game controller', then press each key on gamepad to check if it is work. If the buttons are normal, there will be a mapping response on the 'game controller' App. 3If the gamepad is defective, please contact us for replace- ment or refund. game controller App:



Thanks for chosing our gamepad! We commit ourselves to provide the first class product and service for all customers. If you are facing any issue, please do not hesitate to contact us. We will do our best to help you out.



## Documents / Resources

	<a href="#">arVin D6 Wireless Game Controller</a> [pdf] User Manual D6, D6 Wireless Game Controller, Wireless Game Controller, Game Controller, Controller
--	---

## References

- [User Manual](#)