



## arvig Android TV Set-Top Box Instructions

[Home](#) » [arvig](#) » arvig Android TV Set-Top Box Instructions 

### Contents

- [1 arvig Android TV Set-Top Box](#)
- [2 Components included](#)
- [3 Follow these steps](#)
- [4 To connect to your network](#)
- [5 Documents / Resources](#)
- [6 Related Posts](#)



### arvig Android TV Set-Top Box



### Components included

## Components included:



streaming media player  
set-top box (STB)



power adapter



HDMI cable



AA batteries

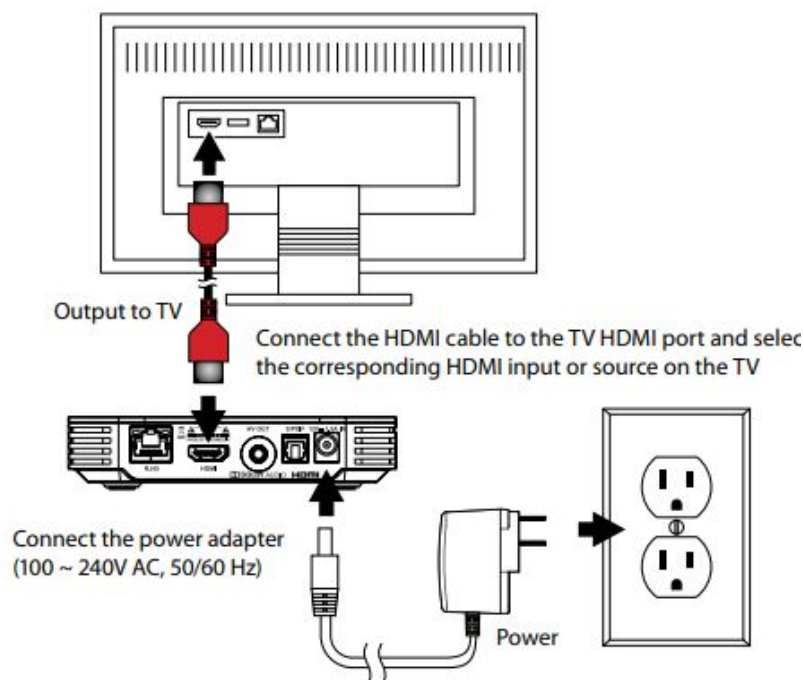


remote control

1. streaming media player set-top box (STB)
2. power adapter
3. HDMI cable
4. AA batteries
5. remote control

## Follow these steps

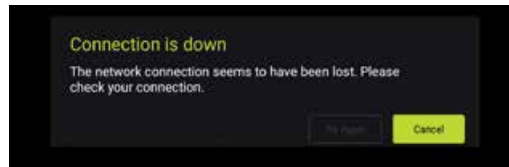
1. Remove the STB and accessories from the box and plastic packaging—do not block vents or the remote control signal. Insert the included batteries into the remote control.
2. Connect the included HDMI cable to the HDMI 1 port on your TV, and the other end to the HDMI port on the back of the STB.
3. Connect the included power adapter to the 12V socket on the STB, then to an appropriate power source in your home.



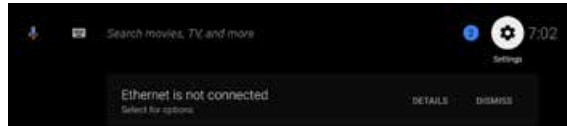
With your TV on, the STB will automatically begin the set-up process. During this process, you will need to connect to your home wireless network.

## To connect to your network

1. When you see the message “Connection is down,” press the Select button while the Cancel option is highlighted.



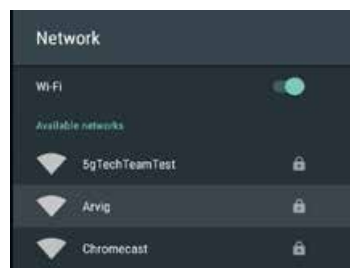
2. On the Android TV menu screen you will see a message “Ethernet is not connected.” Press up on the Navigation button twice to highlight the Settings menu icon (cog wheel) in the upper right corner of the screen and press Select.



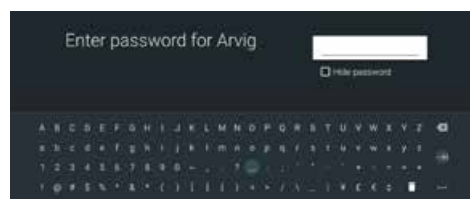
3. A sidebar menu appears with Setting options. “Network” is already highlighted, press the Select button.



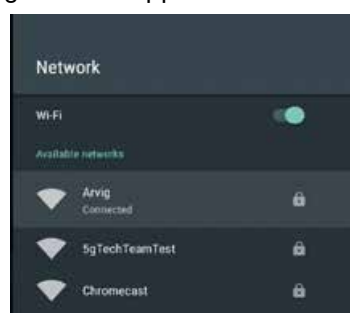
4. Press down on the Navigation button to highlight the correct network, then press Select.



5. Press left, right, up and down on the Navigation button to highlight letters, numbers and symbols on the on-screen keyboard and press the Select button to choose the character. Once complete, highlight the —>| symbol and press Select.



6. Wait a few minutes while the STB connects to your network; the Network sidebar menu appears showing you confirmation you're connected.
7. Press the LIVE button to launch the Arvig WiFi TV app.




If you need additional assistance, see the full instruction manual on [arvig.net/WiFiTV](http://arvig.net/WiFiTV) for the Android TV STB.

888.99.ARVIG | [arvig.net/WiFiTV](http://arvig.net/WiFiTV)

Based on Arvig service area, some restrictions apply. ©Arvig 2020 Item244

**Documents / Resources**

	<p><a href="#">arvig Android TV Set-Top Box</a> [pdf] Instructions Android TV Set-Top Box</p>
---	---