



aruba EC-XS EdgeConnect Switcher User Guide

[Home](#) » [aruba](#) » aruba EC-XS EdgeConnect Switcher User Guide 



Quick Start Guide

EdgeConnect

FIPS

EC-XS

EC-M-P

EC-XL-P

EC-XL-P-NM

Part 1 – Physical Installation

Before You Begin

- Check your packing slip to verify that you have all the necessary items.
- If installing an EC-M-P, fi first read, Small Form-Factor Pluggable (SFP) Module Installation Guide.
- If your EdgeConnect model requires it, ensure that you have the associated rack-mount instructions.
- Make sure you have a standard Phillips screwdriver.
- Supply circuits should be protected by a minimum 15A and maximum 20A circuit breaker.
- On the network equipment, identify the 10/100/1000 Ethernet ports and/or the 1Gbps/10Gbps fi ber ports.

Aruba
6280 America Center Drive San Jose, CA 95002
1.877.210.7325 (toll-free in the USA)
+1.408.935.1850
www.silver-peak.com/support

IMPORTANT – READ THIS FIRST: You must install and register your Orchestrator with the Silver Peak Cloud Portal BEFORE setting up an EdgeConnect appliance. After Orchestrator is registered with your account name and key, you can proceed with EdgeConnect installation. If you don't know or are unsure what role the Orchestrator plays, please contact your network architect or deployment lead.

1. Apply Tamper-Evident Labels

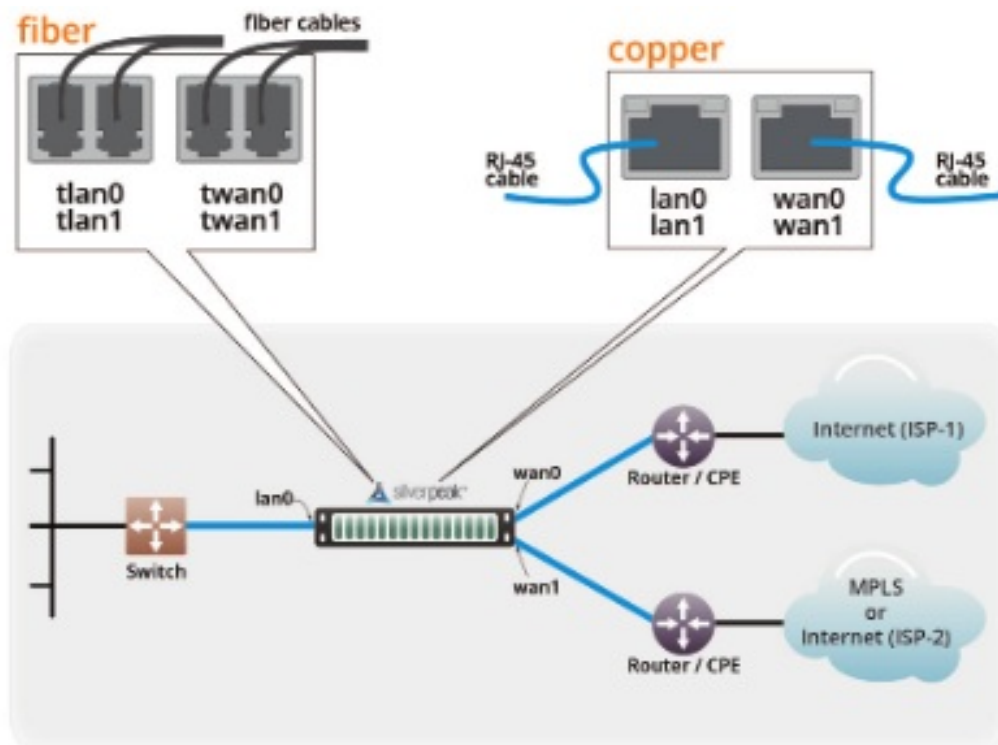
Tamper-Evident labels and the Installation Guide are supplied with the appliance.

2. Rack Mount the Appliance

Based on your model, refer to the separate instructions for rack mount, desk mount, or wall mount.

3. Install the Appliance into the Network

- Identify the relevant ports on the rear of the appliance.
- Connect network cables from the appliance to the identified network equipment ports.
- DO NOT connect the power cables yet.



All copper RJ-45 Gigabit Ethernet interfaces in the Silver Peak appliance support MDI/MDI-X and auto-negotiation.

The fiber interfaces support:

- LC connectors
- multi-mode 50 fiber / 62.5 fiber
- single-mode 9 fiber (EC-M-P only)

4. Connect Power Cords

Depending on the model, your appliance may have a single power supply or redundant power supplies.

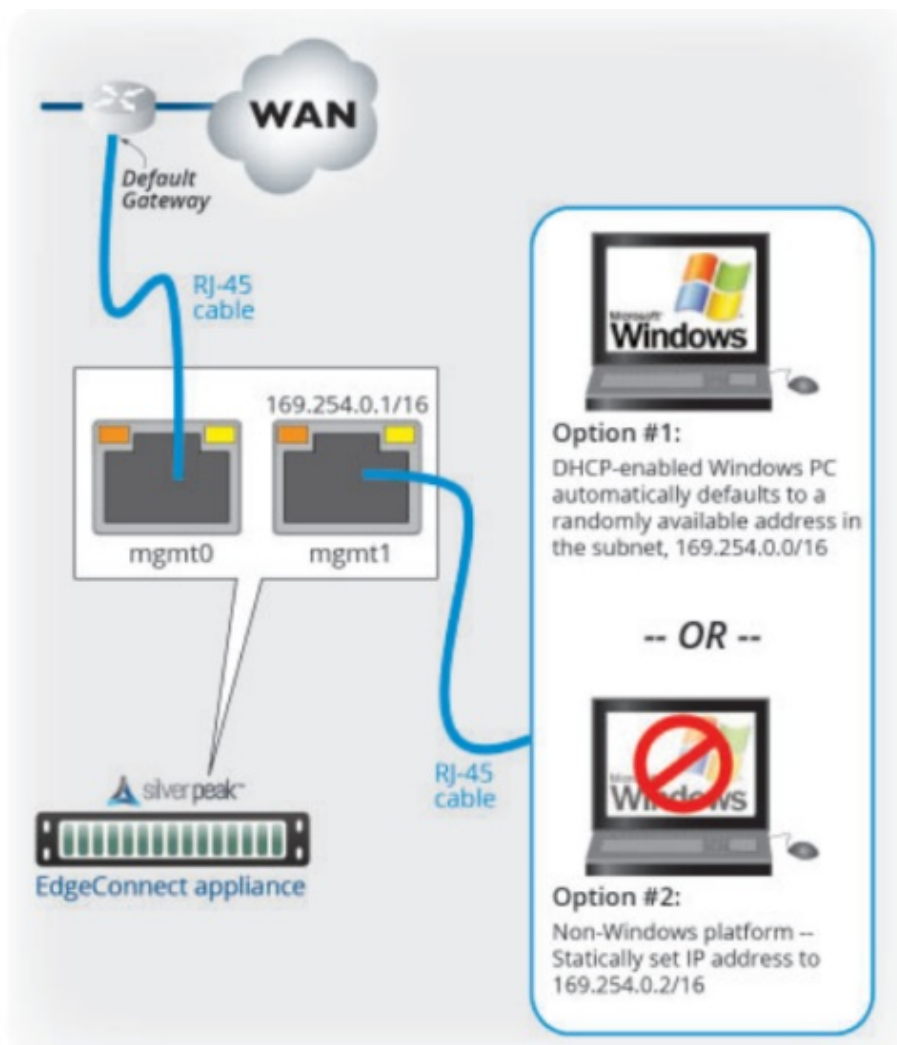
- Connect each power cable to the Silver Peak appliance and to your local power source.
- For redundancy, plug in all power cords, preferably to different power sources.

5. Turn the Power On

Some appliances power up as soon as they're plugged in, others don't. If the power is off, turn it on. If you don't plug in all the power cords, an audible alarm sounds until you do.

- Verify that each power supply's LED illuminates green.

- b. On the front panel, verify that the Power LED illuminates green or blue.
6. Optionally, connect the management ports
- It is not necessary, however, if you want to create local, physical access to the management ports, you can do so as follows: Silver Peak assigns the MGMT1 ethernet interface a default IP address of 169.254.0.1 and a subnet mask of /16 (the same as 255.255.0.0).



Both RJ-45 Gigabit Ethernet interfaces (MGMT0 and MGMT1) support MDI/MDI-X and auto-negotiation.

- a. Identify the appliance's MGMT0 and MGMT1 interfaces.
- b. Using an RJ-45 cable, connect the appliance's MGMT0 interface to the network equipment interface.
- c. Using another RJ-45 cable, connect the appliance's MGMT1 interface to your PC.
- You've now completed the physical installation and are ready to register the product with Unity Orchestrator.

IMPORTANT – READ THIS FIRST: You must install and register your Orchestrator with the Silver Peak Cloud Portal BEFORE setting up an EdgeConnect appliance. after Orchestrator is registered with your account name and key, you can proceed with EdgeConnect installation.

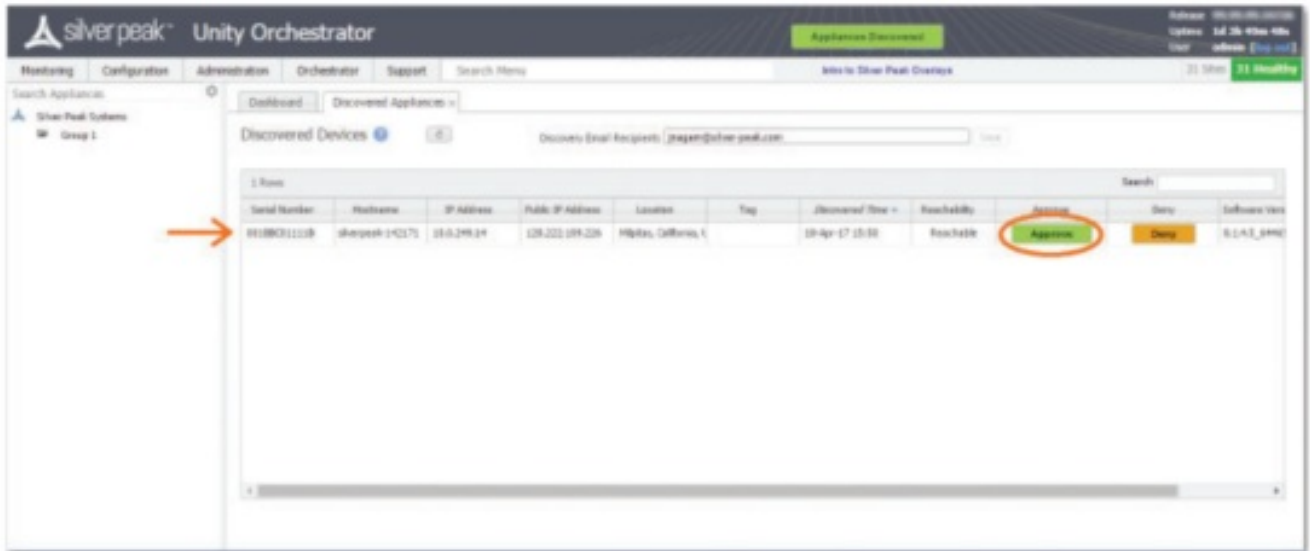
If you don't know or are unsure what role the Orchestrator plays, please contact your network architect or deployment lead.

1. Approve the Discovered Appliance

After you power on the EdgeConnect appliance, it automatically registers its serial number with the Silver Peak Cloud Portal. The portal knows how to associate a serial number with a particular account.

- a. Go to the Orchestrator.
- b. In the header, click the blinking box named Appliances Discovered.

The Discovered Appliances page opens, listing the most recently discovered appliances first.



c. After verifying that the appliance is yours, click Approve.

d. Select the group and click Apply.

The Appliance Manager Configuration Wizard opens.

2. Complete the Appliance Manager Configuration Wizard

Appliance Setup

1 2 3 4

Hostname: silverpeak-140171 Site Name:

Group: North America Hub Site? ☒ Not a hub ☐ Hub

Admin Password: Contact Name:

Confirm Password: Contact Email:


Software Version: Serial Number: 88188C011118

Location: Address 1: Address 2:

City: San Jose State: California

Zip Code: Country: US

Region: Region:

Map: 

< Previous Next > Apply

An a. If you've also purchased EdgeConnect Boost or EdgeConnect Plus, and you want to apply it to this appliance, select the relevant check box(es) on the Deployment Profile page.

b. At the end, click Apply. It may take up to two minutes to register the appliance.

c. Complete the remaining wizard screens.

• On the Deployment page's default configuration, the WAN-side interfaces use DHCP IP addresses unless you manually enter static IP addresses. Quick Start Guide

EdgeConnect

FIPS

EC-XS

EC-M-P

- Make sure that Orchestrator is installed and registered.
- Verify that you've received the email containing your Account Name and Account Key.




Aruba
6280 America Center Drive
San Jose, CA 95002
1.877.210.7325 (toll-free in the USA)
+1.408.935.1850
www.silver-peak.com/support

Contents

- [1 Documents / Resources](#)
 - [1.1 References](#)
 - [2 Related Posts](#)

Documents / Resources

	aruba EC-XS EdgeConnect Switcher [pdf] User Guide EC-XS EdgeConnect Switcher, EC-XS, EdgeConnect Switcher
---	--

References

- [Support | Silver Peak](#)
- [User Manual](#)

[Manuals+](#), [Privacy Policy](#)

This website is an independent publication and is neither affiliated with nor endorsed by any of the trademark owners. The "Bluetooth®" word mark and logos are registered trademarks owned by Bluetooth SIG, Inc. The "Wi-Fi®" word mark and logos are registered trademarks owned by the Wi-Fi Alliance. Any use of these marks on this website does not imply any affiliation with or endorsement.